



Texas Crop Progress and Condition

Southern Plains Regional Field Office
Post Office Box 70 Austin, Texas 78767
(800) 626-3142 · FAX (855) 270-2725 · www.nass.usda.gov/tx

Issue: TX-CW1920

Weekly Summary for May 25-May 31

Released: June 1, 2020

Statewide, Texas received from trace amounts to upwards of 3.0 inches of precipitation. Isolated areas of the Upper Coast, the Edwards Plateau, South East Texas, South Central Texas, and South Texas received up to 8.0 inches. There were 5.4 days suitable for fieldwork.

Small Grains: Small grain harvest continued or was completed in some areas of the state, while harvest slowed in areas of the Edwards Plateau due to recent rains. Winter Wheat harvest was just getting underway in some areas of the Northern High Plains and was expected to begin in most areas in the next ten days.

Row Crops: Row crop planting continued across most areas of the state, while dryland cotton planting was underway in the Northern High Plains. Cotton planting continued in areas of the Southern High and Low Plains, however dry land emergence was slowed by dry conditions. Peanut planting continued in South Texas. Corn damage was reported in some areas of the Blacklands from recent hail.

Fruit, Vegetable and Specialty Crops: Pecan orchards benefited from recent rains in areas of the Edwards Plateau, while some producers in the Southern High Plains readied to spray for pecan nut casebearers as populations warrant. Onion harvest halted in South Texas due to wet conditions, while melon crops continued to progress. Harvesting of blackberries, blueberries, plums and peaches had begun in areas of North East Texas.

Livestock, Range and Pasture: Livestock were rated in fair to good condition. Supplemental feeding slowed in many areas. Pasture and range condition was rated mostly fair to good. Stock pond levels improved in areas of North Texas. Cattle were moved to summer pastures in areas of the Southern High Plains.

Crop Progress

Stage	Percent of Acreage			
	Current Week	Previous Week	Previous Year	5 Year Average
Corn				
Silked	46	30	31	31
Cotton				
Planted	63	50	59	56
Squaring	13	11	10	9
Peanuts				
Planted	61	53	66	77
Sorghum				
Planted	87	85	84	83
Headed	40	35	33	32
Soybeans				
Planted	81	78	74	78
Emerged	62	50	56	64
Blooming	3	(NA)	4	2
Sunflowers				
Planted	45	20	48	55
Winter Wheat				
Harvested	32	27	19	21
Oats				
Harvested	51	36	41	37

(NA) Not available.

Crop Condition

Crop	Percent of Acreage					Index ¹	
	Excellent	Good	Fair	Poor	Very Poor	2020	2019
Corn	17	59	19	3	2	84	85
Cotton	3	27	60	10	--	66	68
Peanuts	1	66	21	8	4	75	88
Rice	16	55	29	--	--	85	75
Sorghum	7	45	41	5	2	74	86
Soybeans	13	51	36	--	--	82	74
Wheat	6	33	39	15	7	64	81
Oats	15	46	28	9	2	77	71
Range and Pasture	9	30	40	16	5	65	81

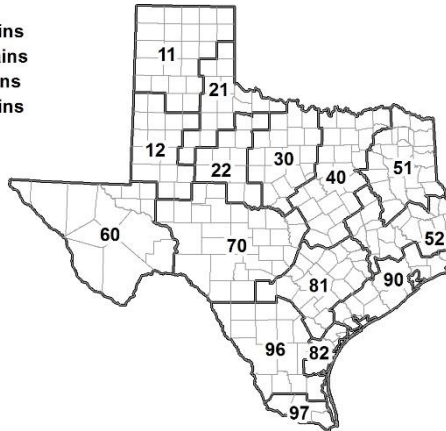
¹ The formula for the condition index is $I = (5V + 25P + 60F + 90G + 110E)/100$ where I = crop condition index and V, P, F, G, E = percentage of crop rated very poor, poor, fair, good, excellent.

Soil Moisture and Days Suitable by District

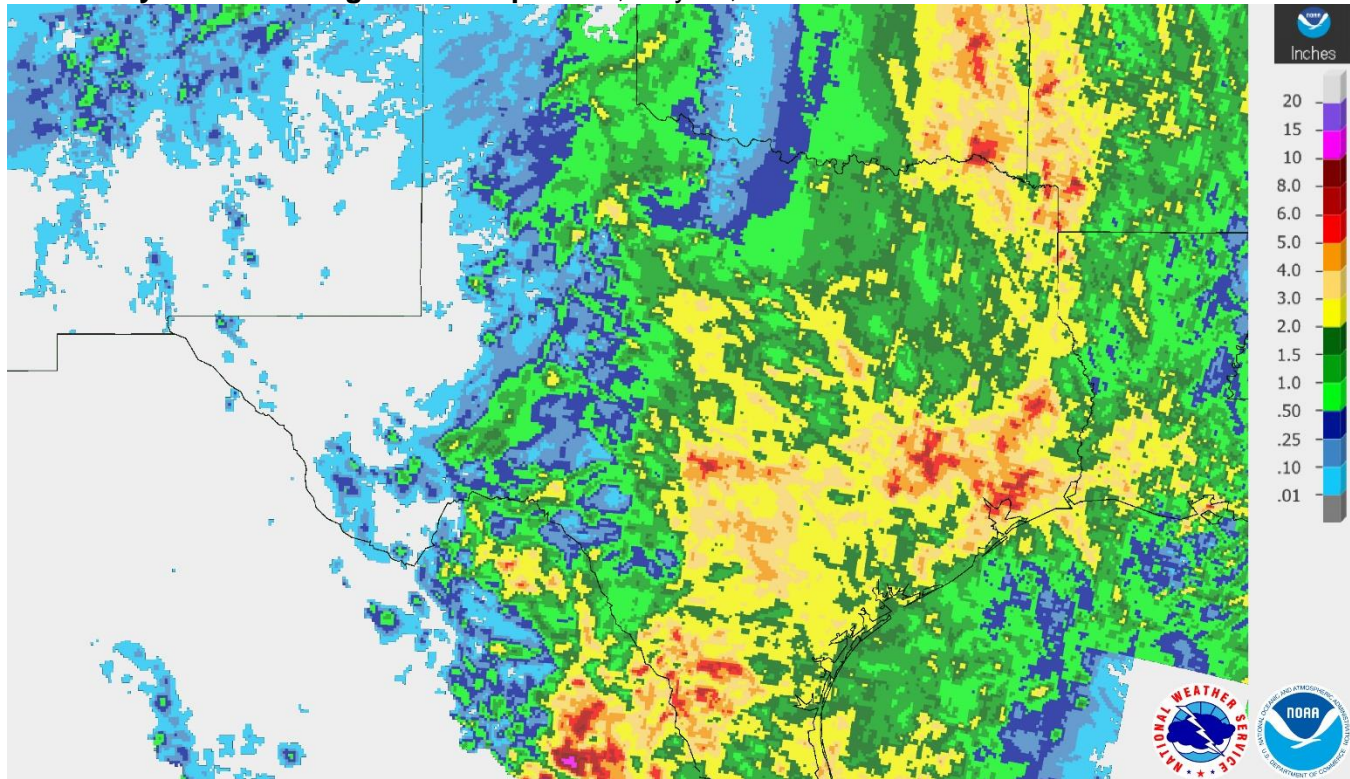
District	Topsoil Moisture Condition by District				Subsoil Moisture Condition by District				Days Suitable for Fieldwork
	Percentage of Acreage				Percentage of Acreage				
	Very Short	Short	Adequate	Surplus	Very Short	Short	Adequate	Surplus	
11	24	43	32	1	22	39	39	0	7.0
12	9	69	14	8	11	70	14	5	5.6
21	9	19	62	10	2	31	59	8	5.1
22	10	48	36	6	10	40	42	8	5.8
30	3	21	76	0	3	17	80	0	5.3
40	2	6	65	27	2	6	55	37	4.1
51	2	12	72	14	0	11	71	18	6.5
52	0	7	62	31	0	6	66	28	5.8
60	11	21	68	0	27	40	33	0	5.8
70	11	16	67	6	12	18	64	6	5.8
81	0	13	85	2	0	25	72	3	6.5
82	0	8	61	31	0	8	55	37	4.5
90	0	4	69	27	2	18	67	13	1.8
96	2	4	87	7	2	19	65	14	3.6
97	5	7	60	28	5	3	62	30	2.0
State	9	31	49	11	9	32	48	11	5.4

Texas Agricultural Districts

- 11 Northern High Plains
- 12 Southern High Plains
- 21 Northern Low Plains
- 22 Southern Low Plains
- 30 Cross Timbers
- 40 Blacklands
- 51 North East
- 52 South East
- 60 Trans-Pecos
- 70 Edwards Plateau
- 81 South Central
- 82 Coastal Bend
- 90 Upper Coast
- 96 South
- 97 Lower Valley

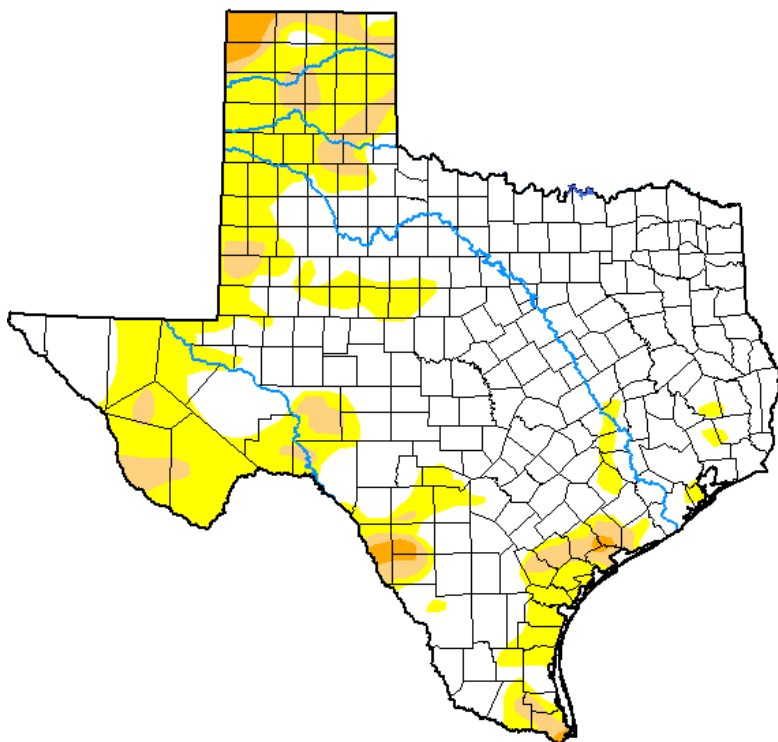


Seven Day Observed Regional Precipitation, May 31, 2020.



Source: National Weather Service, www.nws.noaa.gov.

Drought Monitor, Valid May 26, 2020.



Drought Conditions (Percent Area)

	None	D0-D4	D1-D4	D2-D4	D3-D4	D4
Current	66.97	33.03	7.85	1.19	0.00	0.00
Last Week <i>05-19-2020</i>	62.26	37.74	10.73	2.87	0.34	0.00
3 Months Ago <i>02-25-2020</i>	67.75	32.25	19.79	10.95	2.66	0.00
Start of Calendar Year <i>12-31-2019</i>	44.69	55.31	36.12	9.19	0.74	0.00
Start of Water Year <i>10-01-2019</i>	31.74	68.26	46.05	22.33	6.32	0.00
One Year Ago <i>05-28-2019</i>	94.24	5.76	0.20	0.00	0.00	0.00

Intensity:

- None
- D0 Abnormally Dry
- D1 Moderate Drought
- D2 Severe Drought
- D3 Extreme Drought
- D4 Exceptional Drought

The Drought Monitor focuses on broad-scale conditions. Local conditions may vary. For more information on the Drought Monitor, go to <https://droughtmonitor.unl.edu/About.aspx>

Author:

Curtis Riganti
National Drought Mitigation Center



Source: National Drought Mitigation Center, a partnership with USDA, U.S. Department of Commerce/NOAA, <http://droughtmonitor.unl.edu>.

Texas Crop Progress and Condition (1 June 2020)

USDA, National Agricultural Statistics Service, Southern Plains Regional Field Office