



# Texas Crop Progress and Condition

Southern Plains Regional Field Office  
Post Office Box 70 Austin, Texas 78767  
(800) 626-3142 · FAX (855) 270-2725 · [www.nass.usda.gov/tx](http://www.nass.usda.gov/tx)

**Issue: TX-CW2220**

**Weekly Summary for June 15 - June 21**

**Released: June 22, 2020**

Some areas of Texas received from trace amounts to upwards of 2.0 inches of precipitation. Isolated areas of the Northern High Plains and the Cross Timbers received up to 6.0 inches with some hail and high winds reported. There were 6.2 days suitable for fieldwork.

**Small Grains:** Winter wheat harvest was completed in most areas of the state. Harvest progressed rapidly in the Northern High Plains with only a few fields remaining in the Southern High Plains and Low Plains.

**Row Crops:** Row crops continued to progress in most areas of the state while some planting of cotton and sorghum continued. Dry land cotton suffered from hot, windy, and dry conditions in areas of the Northern and Southern High Plains. Corn progressed well in areas with adequate irrigation water, but suffered from heat stress in other areas of the Northern High Plains. Some cotton producers in the Northern Plains had to replant due to poor stands, while some in the Northern High Plains replanted an alternative crop. Peanut planting continued and neared completion in South Texas.

**Fruit, Vegetable and Specialty Crops:** Pecans continued to progress with irrigation in areas of South Texas, the Edwards Plateau, South East Texas and the Southern High Plains. Melons progressed in South Texas and the Trans-Pecos, with harvest expected soon. Fruits and vegetables continued to mature in the Cross Timbers, while vegetables in South East Texas required daily irrigation.

**Livestock, Range and Pasture:** Livestock were rated in fair to good condition. Supplemental feeding slowed in many areas. Pasture and range condition was rated mostly fair to good. Grasshopper infestations were reported and hay meadows were treated in areas of North East Texas, while hog damage to fields continued.

### Crop Progress

Stage	Percent of Acreage			
	Current Week	Previous Week	Previous Year	5 Year Average
Corn				
Silked	55	53	51	50
Dough	28	(NA)	14	21
Cotton				
Squaring	27	18	24	20
Setting Bolls	10	7	3	5
Peanuts				
Planted	90	86	84	95
Rice				
Headed	23	16	6	15
Sorghum				
Headed	54	50	52	50
Coloring	38	34	30	30
Soybeans				
Planted	92	88	92	92
Emerged	84	77	74	85
Blooming	27	20	27	29
Sunflowers				
Planted	77	69	67	82
Harvested	3	(NA)	(NA)	23
Winter Wheat				
Harvested	85	68	53	66
Oats				
Harvested	91	87	83	83

(NA) Not available.

### Crop Condition

Crop	Percent of Acreage					Index <sup>1</sup>	
	Excellent	Good	Fair	Poor	Very Poor	2020	2019
Corn	11	44	32	11	2	74	83
Cotton	5	18	37	29	11	52	63
Peanuts	--	59	24	16	1	72	88
Rice	12	52	36	--	--	82	76
Sorghum	9	30	35	24	2	64	87
Soybeans	11	49	36	4	--	79	74
Wheat	3	31	38	21	7	60	80
Oats	3	35	40	17	5	63	69
Range and Pasture	3	25	40	21	11	56	84

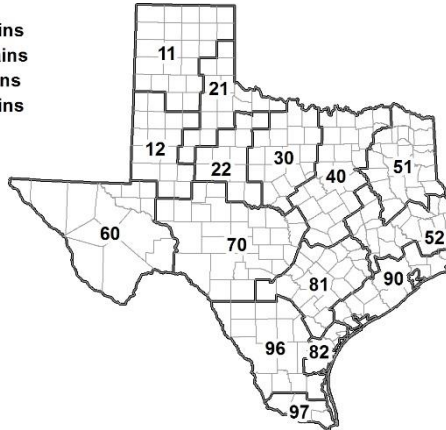
<sup>1</sup> The formula for the condition index is  $I = (5V + 25P + 60F + 90G + 110E)/100$  where I = crop condition index and V, P, F, G, E = percentage of crop rated very poor, poor, fair, good, excellent.

### Soil Moisture and Days Suitable by District

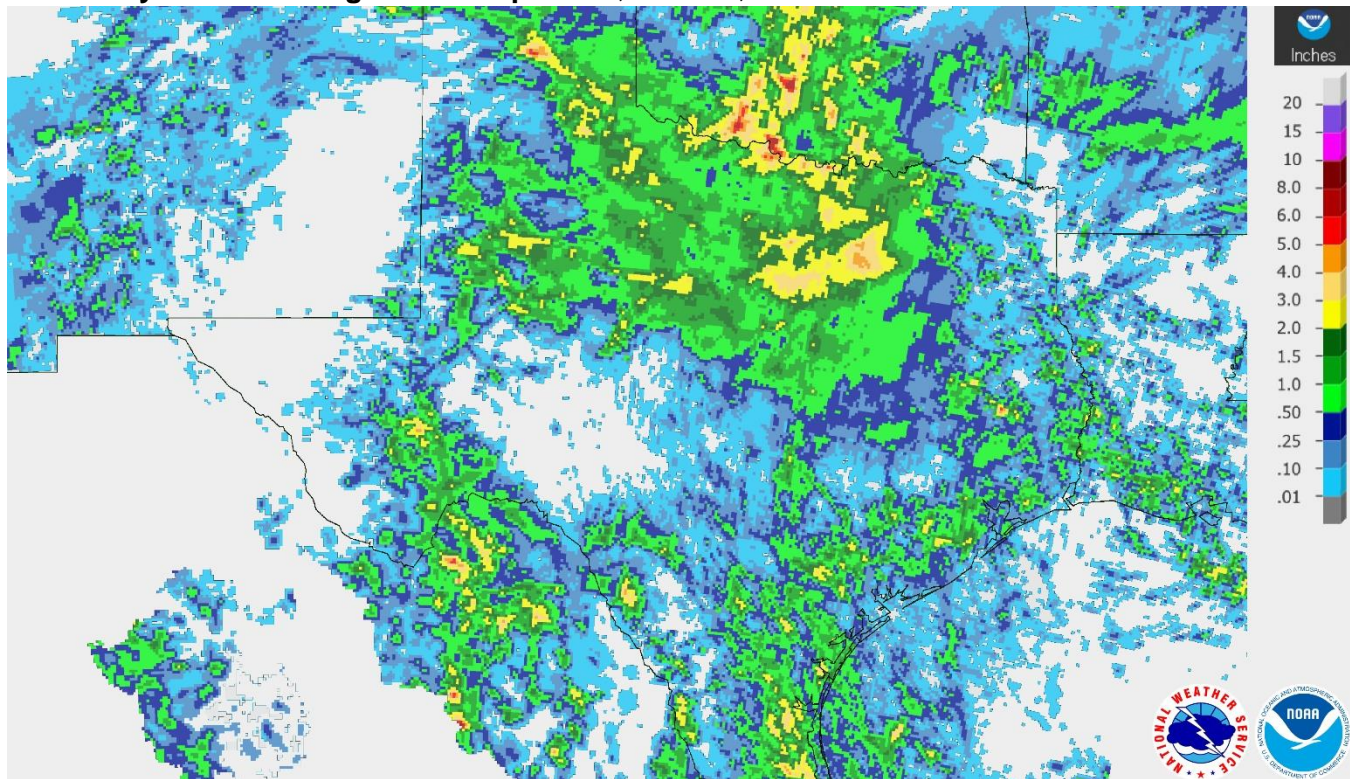
District	Topsoil Moisture Condition by District				Subsoil Moisture Condition by District				Days Suitable for Fieldwork
	Percentage of Acreage				Percentage of Acreage				
	Very Short	Short	Adequate	Surplus	Very Short	Short	Adequate	Surplus	
11	63	25	2	10	47	40	6	7	7.0
12	17	40	35	8	18	56	23	3	5.1
21	20	38	42	0	9	44	47	0	6.4
22	8	59	28	5	8	54	35	3	5.4
30	14	39	36	11	12	36	42	10	6.2
40	24	38	35	3	16	46	34	4	6.5
51	9	56	35	0	21	41	38	0	6.8
52	5	61	33	1	5	63	32	0	6.5
60	13	72	14	1	14	72	13	1	6.2
70	30	46	24	0	29	41	29	1	7.0
81	17	55	28	0	9	57	34	0	6.6
82	0	26	69	5	0	14	86	0	6.2
90	8	46	44	2	6	39	51	4	7.0
96	21	19	60	0	13	20	66	1	5.8
97	5	14	62	19	5	11	62	22	5.6
State	25	39	30	6	20	45	31	4	6.2

### Texas Agricultural Districts

- 11 Northern High Plains
- 12 Southern High Plains
- 21 Northern Low Plains
- 22 Southern Low Plains
- 30 Cross Timbers
- 40 Blacklands
- 51 North East
- 52 South East
- 60 Trans-Pecos
- 70 Edwards Plateau
- 81 South Central
- 82 Coastal Bend
- 90 Upper Coast
- 96 South
- 97 Lower Valley

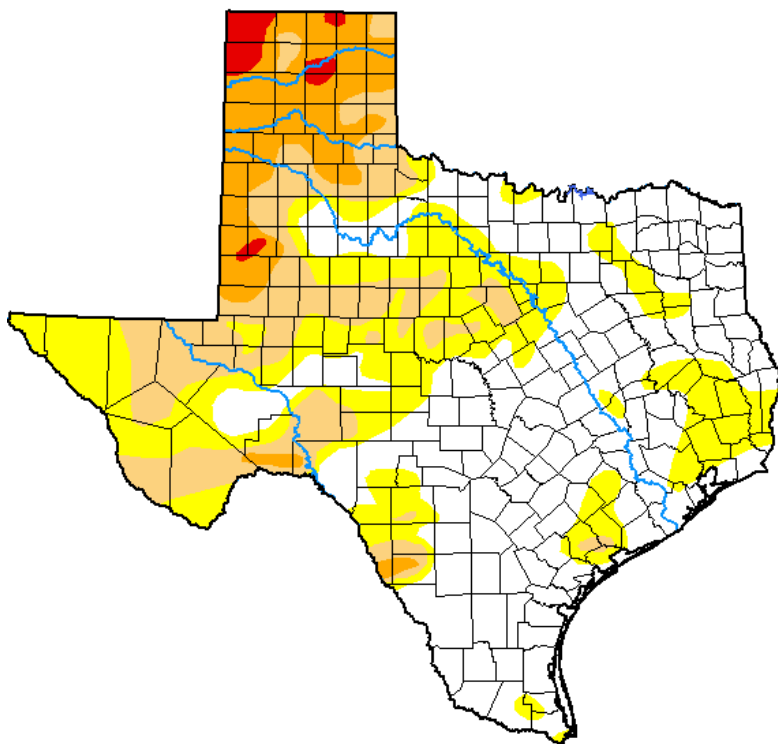


## Seven Day Observed Regional Precipitation, June 21, 2020.



Source: National Weather Service, [www.nws.noaa.gov](http://www.nws.noaa.gov).

## Drought Monitor, Valid June 16, 2020.



Drought Conditions (Percent Area)

	None	D0-D4	D1-D4	D2-D4	D3-D4	D4
<b>Current</b>	45.87	54.13	27.23	11.08	1.39	0.00
<b>Last Week</b> 06-09-2020	58.07	41.93	22.82	5.61	0.58	0.00
<b>3 Months Ago</b> 03-17-2020	69.38	30.62	22.05	15.97	6.96	0.29
<b>Start of Calendar Year</b> 12-31-2019	44.69	55.31	36.12	9.19	0.74	0.00
<b>Start of Water Year</b> 10-01-2019	31.74	68.26	46.05	22.33	6.32	0.00
<b>One Year Ago</b> 06-18-2019	94.17	5.83	1.59	0.00	0.00	0.00

Intensity:

- None
- D0 Abnormally Dry
- D1 Moderate Drought
- D2 Severe Drought
- D3 Extreme Drought
- D4 Exceptional Drought

The Drought Monitor focuses on broad-scale conditions. Local conditions may vary. For more information on the Drought Monitor, go to <https://droughtmonitor.unl.edu/About.aspx>

Author:

Richard Tinker  
CPC/NOAA/NWS/NCEP



Source: National Drought Mitigation Center, a partnership with USDA, U.S. Department of Commerce/NOAA, <http://droughtmonitor.unl.edu>.

## Texas Crop Progress and Condition (22 June 2020)

USDA, National Agricultural Statistics Service, Southern Plains Regional Field Office