



Texas Crop Progress and Condition

Southern Plains Regional Field Office
Post Office Box 70 Austin, Texas 78767
(800) 626-3142 · FAX (855) 270-2725 · www.nass.usda.gov/tx

Issue: TX-CW2320

Weekly Summary for June 22 - June 28

Released: June 29, 2020

Some areas of Texas received from trace amounts to upwards of 3.0 inches of precipitation. Isolated areas of South East Texas, the Upper Coast, South Texas, and South Central Texas received up to 15.0 inches with some hail and high winds reported. There were 5.6 days suitable for fieldwork.

Small Grains: Winter wheat harvest was completed in most areas of the state but delayed in the Northern High Plains due to recent rains. Small grain residue was plowed under in some areas of the Cross Timbers.

Row Crops: Row crops continued to progress in most areas of the state. Corn silage harvest was underway in areas of the Blacklands and the Cross Timbers. Corn damaged by hail was recovering adequately in areas of South East Texas, whereas corn damaged by hail in areas of South Central Texas seemed less likely to recover. Peanut planting continued and neared completion in South Texas. Rice in the Upper Coast continued to progress with some beginning to head out. Cotton continued to progress throughout the state however dryland cotton needed moisture to emerge in the Southern Low Plains. Meanwhile, both Pima and Upland cotton in areas of the Trans-Pecos continued to make great progress. Sunflowers neared peak bloom in the Blacklands, but insect populations warranted spraying for control.

Fruit, Vegetable and Specialty Crops: Pecans continued to progress in areas of South Texas and the Trans-Pecos. Watermelon harvest was well underway in areas of South Texas while expected soon in the Southern High Plains. Meanwhile, peaches progressed in areas of the Edwards Plateau.

Livestock, Range and Pasture: Livestock were rated in fair to good condition. Supplemental feeding slowed in many areas. Pasture and range condition was rated mostly fair to good. Grasshopper infestations were reported in areas of the Southern Low Plains, the Cross Timbers, the Blacklands, and North East Texas. Meanwhile, fly populations continued to be of concern to cattle raisers in South East Texas and the Cross Timbers.

Crop Progress

Stage	Percent of Acreage			
	Current Week	Previous Week	Previous Year	5 Year Average
Corn				
Silked	62	55	66	56
Dough	40	28	33	37
Cotton				
Squaring	30	27	28	26
Setting Bolls	13	10	6	9
Peanuts				
Planted	95	90	93	97
Pegging	1	(NA)	(NA)	11
Rice				
Emerged	54	23	21	34
Sorghum				
Headed	64	54	58	58
Planted	44	38	36	38
Soybeans				
Headed	97	92	96	96
Coloring	88	84	85	90
Blooming	40	27	39	39
Sunflowers				
Planted	80	77	73	86
Harvested	8	3	(NA)	27
Winter Wheat				
Harvested	96	85	74	79
Oats				
Harvested	92	91	89	90

(NA) Not available.

Crop Condition

Crop	Percent of Acreage					Index ¹	
	Excellent	Good	Fair	Poor	Very Poor	2020	2019
Corn	10	45	36	7	2	75	82
Cotton	4	17	43	28	8	53	64
Peanuts	2	52	33	12	1	72	90
Rice	20	52	28	0	0	86	75
Sorghum	5	33	37	23	2	63	88
Soybeans	7	57	33	2	1	79	73
Wheat	3	31	38	21	7	60	80
Oats	3	35	40	17	5	63	69
Range and Pasture	5	26	38	21	10	57	83

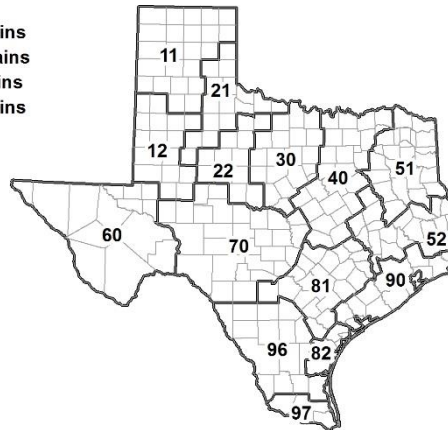
¹ The formula for the condition index is $I = (5V + 25P + 60F + 90G + 110E)/100$ where I = crop condition index and V, P, F, G, E = percentage of crop rated very poor, poor, fair, good, excellent.

Soil Moisture and Days Suitable by District

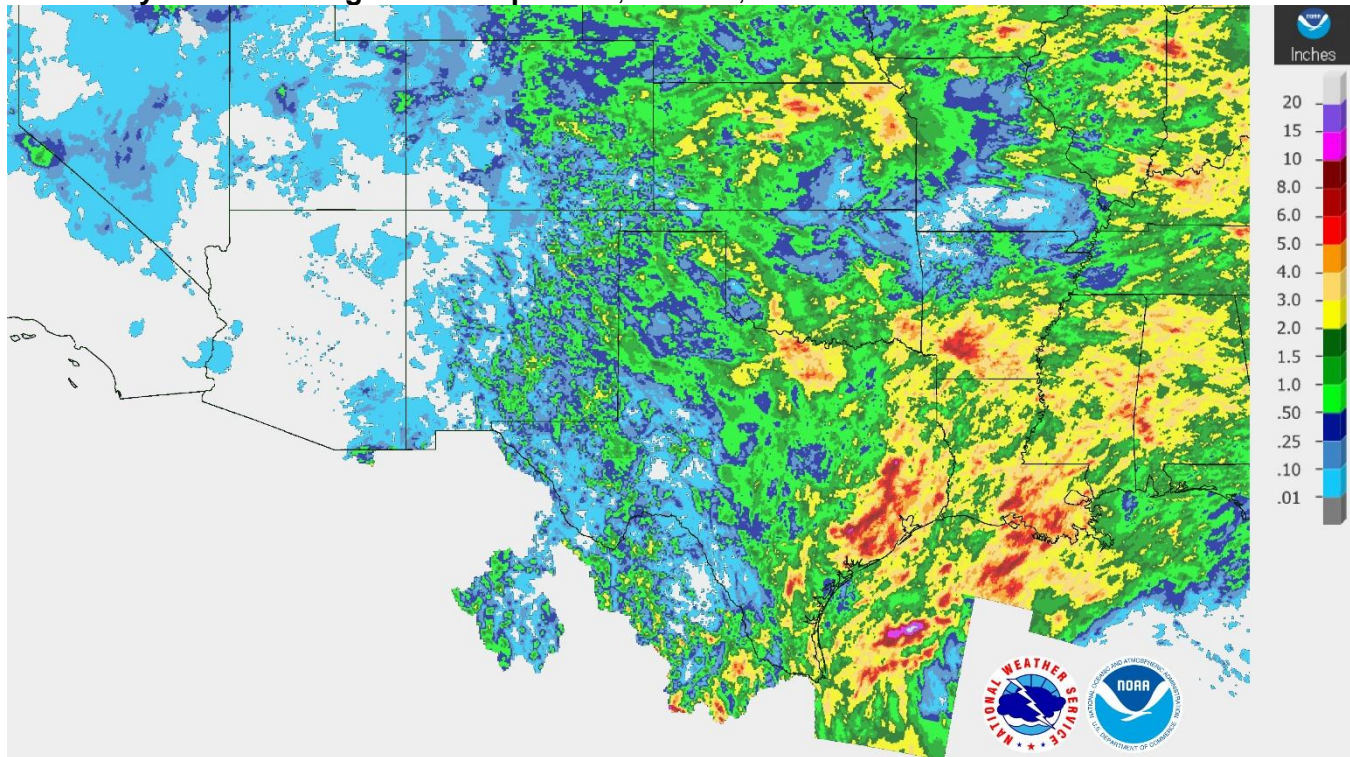
District	Topsoil Moisture Condition by District				Subsoil Moisture Condition by District				Days Suitable for Fieldwork
	Percentage of Acreage				Percentage of Acreage				
	Very Short	Short	Adequate	Surplus	Very Short	Short	Adequate	Surplus	
11	63	25	2	10	28	58	13	1	7.0
12	24	56	14	6	24	61	15	0	5.1
21	3	41	56	0	6	42	52	0	5.4
22	17	66	17	0	16	56	25	3	6.2
30	2	17	71	10	5	23	70	2	3.6
40	1	19	80	0	2	20	72	6	4.9
51	9	36	51	4	15	34	48	3	5.8
52	0	36	64	0	2	37	54	7	5.1
60	16	47	37	0	17	51	32	0	6.8
70	50	19	31	0	35	30	34	1	7.0
81	2	48	50	0	3	48	49	0	6.6
82	8	21	63	8	0	14	86	0	6.2
90	3	9	49	39	1	23	37	39	2.0
96	21	11	66	2	19	15	65	1	5.7
97	5	21	60	14	5	12	71	12	5.6
State	22	34	38	6	15	43	38	4	5.6

Texas Agricultural Districts

- 11 Northern High Plains
- 12 Southern High Plains
- 21 Northern Low Plains
- 22 Southern Low Plains
- 30 Cross Timbers
- 40 Blacklands
- 51 North East
- 52 South East
- 60 Trans-Pecos
- 70 Edwards Plateau
- 81 South Central
- 82 Coastal Bend
- 90 Upper Coast
- 96 South
- 97 Lower Valley

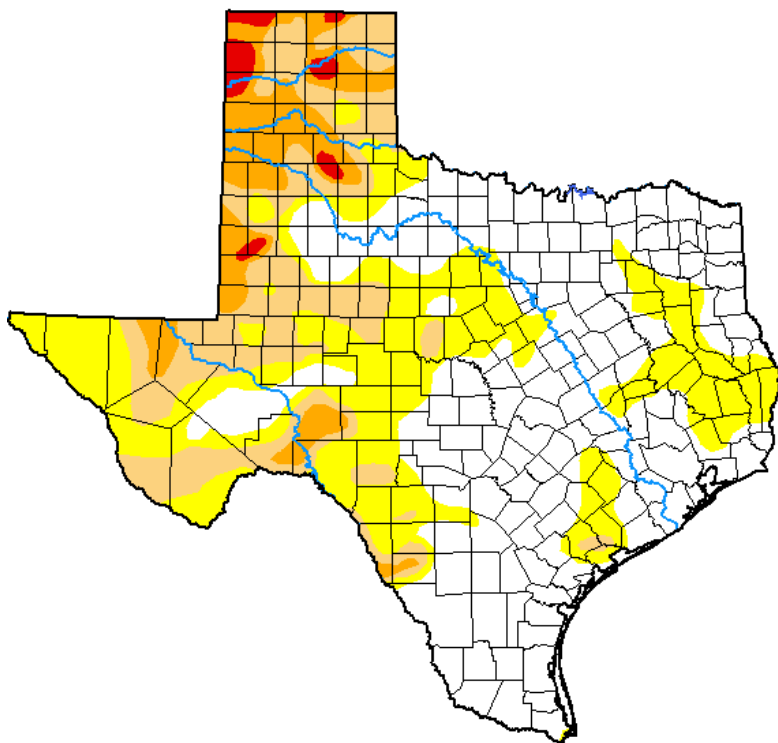


Seven Day Observed Regional Precipitation, June 28, 2020.



Source: National Weather Service, www.nws.noaa.gov.

Drought Monitor, Valid June 23, 2020.



Drought Conditions (Percent Area)

	None	D0-D4	D1-D4	D2-D4	D3-D4	D4
Current	47.22	52.78	24.82	9.17	1.38	0.00
Last Week 06-16-2020	45.87	54.13	27.23	11.08	1.39	0.00
3 Months Ago 03-24-2020	73.64	26.36	19.78	14.89	4.44	0.35
Start of Calendar Year 12-31-2019	44.69	55.31	36.12	9.19	0.74	0.00
Start of Water Year 10-01-2019	31.74	68.26	46.05	22.33	6.32	0.00
One Year Ago 06-25-2019	95.84	4.16	1.93	0.23	0.00	0.00

Intensity:

- None
- D0 Abnormally Dry
- D1 Moderate Drought
- D2 Severe Drought
- D3 Extreme Drought
- D4 Exceptional Drought

The Drought Monitor focuses on broad-scale conditions. Local conditions may vary. For more information on the Drought Monitor, go to <https://droughtmonitor.unl.edu/About.aspx>

Author:

Adam Hartman
NOAA/NWS/NCEP/CPC



Source:

National Drought Mitigation Center, a partnership with USDA, U.S. Department of Commerce/NOAA, <http://droughtmonitor.unl.edu>.

Texas Crop Progress and Condition (29 June 2020)

USDA, National Agricultural Statistics Service, Southern Plains Regional Field Office