



Texas Crop Progress and Condition

Southern Plains Regional Field Office
Post Office Box 70 Austin, Texas 78767
(800) 626-3142 · FAX (855) 270-2725 · www.nass.usda.gov/tx

Issue: TX-CW2620

Weekly Summary for July 13-July 19

Released: July 20, 2020

Conditions across the state were mostly hot and dry during the past week. Isolated areas along the coast, the Northern High Plains, and southern Texas received up to 3.0 inches of rain. However, most of the state received no precipitation or only trace amounts. Triple digit temperatures continued to be reported across the state. There were 6.4 days suitable for fieldwork.

Row Crops: Dryland cotton suffered throughout the Plains due to lack of moisture, while irrigated cotton continued to progress. Cotton was blooming in the Trans-Pecos, Coastal Bend and the Lower Valley. Irrigation was in full swing in South Texas and the Lower Valley. Corn was starting to silk in the Northern High Plains. Spider mites were reported on some corn crops located in the Northern High Plains. Corn and sorghum harvest was active in South Central Texas, the Coastal Bend, the Upper Coast, South Texas and the Lower Valley. Dryland sorghum was struggling in the Edwards Plateau. Peanuts in the Southern High Plains continued to progress but blooms were less robust due to dry conditions. Rice continued to progress in areas of the Upper Coast as most producers were anticipating harvest beginning soon.

Fruit, Vegetable and Specialty Crops: Pecan trees continued to progress in the Trans-Pecos and South Texas, however pecan trees in the Cross Timbers were in need of moisture. Watermelon harvest continued in North East and South Texas. Peach and blueberry harvest was underway in areas of North East Texas.

Livestock, Range and Pasture: Supplemental feeding increased due to dry conditions in areas of the Edwards Plateau, South Central Texas and South Texas. Pastureland across most of the state continued to dry out due to hot conditions. Increasing numbers of flies and grasshoppers continued to disturb livestock and crops inside areas of the Blacklands. Feral hog damage continued in areas of North Texas. Pasture and range condition were mostly rated fair to poor.

Crop Progress

Stage	Percent of Acreage			
	Current Week	Previous Week	Previous Year	5 Year Average
Corn				
Silked	89	82	79	77
Dough	63	60	56	56
Cotton				
Squaring	68	58	68	69
Setting Bolls	21	16	21	23
Peanuts				
Pegging	35	19	21	38
Rice				
Headed	89	84	74	78
Sorghum				
Headed	77	70	71	73
Coloring	62	52	52	55
Soybeans				
Setting Pods	71	66	64	63
Harvested	39	19	30	30
Sunflowers				
Planted	95	88	97	99
Harvested	16	10	15	(NA)

(NA) Not available.

Crop Condition

Crop	Percent of Acreage					Index ¹	
	Excellent	Good	Fair	Poor	Very Poor	2020	2019
Corn	11	41	35	11	2	73	83
Cotton	5	23	38	27	7	56	75
Peanuts	2	62	17	18	1	73	92
Rice	11	53	34	2	--	81	73
Sorghum	12	34	35	15	4	69	87
Soybeans	6	49	42	3	--	77	73
Oats	3	35	40	17	5	63	69
Range and Pasture	2	19	35	29	15	48	75

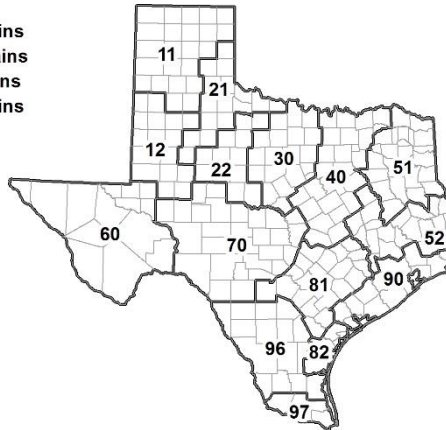
¹ The formula for the condition index is $I = (5V + 25P + 60F + 90G + 110E)/100$ where I = crop condition index and V, P, F, G, E = percentage of crop rated very poor, poor, fair, good, excellent.

Soil Moisture and Days Suitable by District

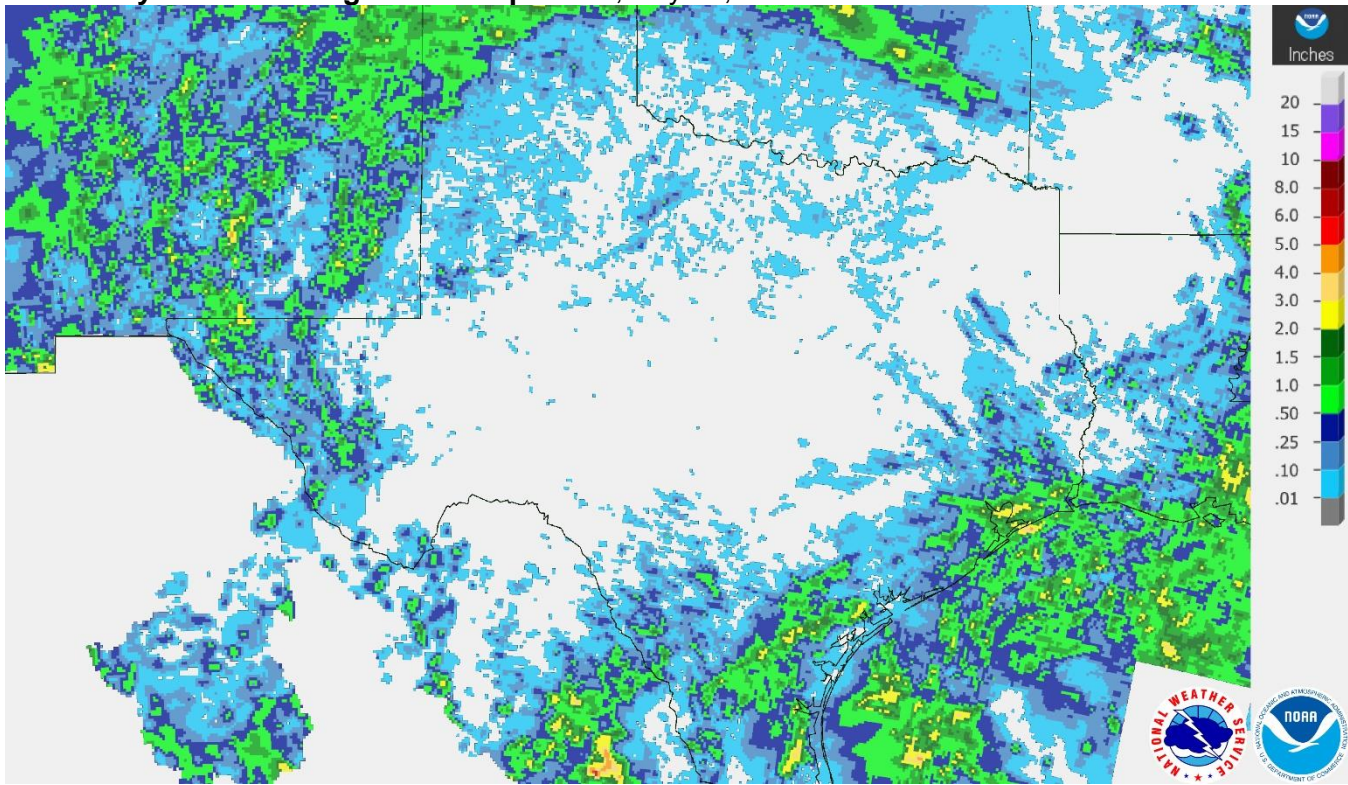
District	Topsoil Moisture Condition by District				Subsoil Moisture Condition by District				Days Suitable for Fieldwork
	Percentage of Acreage				Percentage of Acreage				
	Very Short	Short	Adequate	Surplus	Very Short	Short	Adequate	Surplus	
11	63	25	2	10	28	58	13	1	7.0
12	22	51	26	1	15	58	24	3	5.1
21	19	46	27	8	10	49	32	9	6.1
22	47	35	17	1	34	47	18	1	6.7
30	19	41	40	0	14	39	47	0	6.5
40	33	33	30	4	25	38	34	3	6.7
51	11	39	48	2	10	33	56	1	6.4
52	32	32	35	1	21	41	38	0	6.8
60	13	42	45	0	14	46	40	0	6.1
70	46	42	12	0	47	35	18	0	6.9
81	47	45	8	0	39	50	11	0	6.8
82	17	34	48	1	12	36	51	1	6.8
90	8	55	35	2	6	41	53	0	6.6
96	52	43	5	0	45	36	18	1	6.6
97	28	44	28	0	22	33	42	3	5.4
State	35	39	22	4	23	47	28	2	6.4

Texas Agricultural Districts

- 11 Northern High Plains
- 12 Southern High Plains
- 21 Northern Low Plains
- 22 Southern Low Plains
- 30 Cross Timbers
- 40 Blacklands
- 51 North East
- 52 South East
- 60 Trans-Pecos
- 70 Edwards Plateau
- 81 South Central
- 82 Coastal Bend
- 90 Upper Coast
- 96 South
- 97 Lower Valley

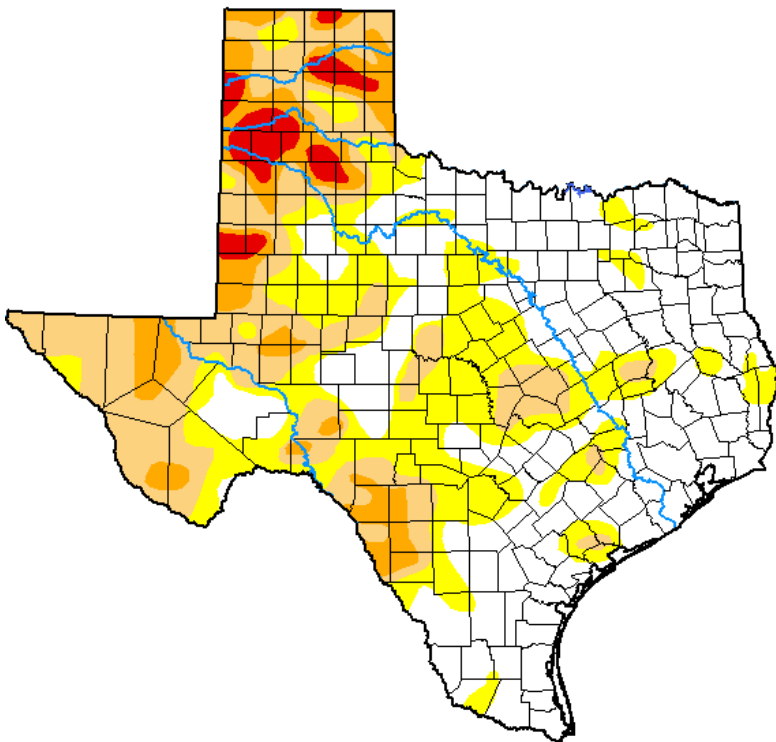


Seven Day Observed Regional Precipitation, July 19, 2020.



Source: National Weather Service, www.nws.noaa.gov.

Drought Monitor, Valid July 14, 2020.



Drought Conditions (Percent Area)

	None	D0-D4	D1-D4	D2-D4	D3-D4	D4
Current	42.96	57.04	32.17	11.67	3.03	0.00
Last Week <i>07-07-2020</i>	46.85	53.15	24.84	8.50	2.23	0.00
3 Months Ago <i>04-14-2020</i>	75.16	24.84	15.93	7.75	1.80	0.14
Start of Calendar Year <i>12-31-2019</i>	44.69	55.31	36.12	9.19	0.74	0.00
Start of Water Year <i>10-01-2019</i>	31.74	68.26	46.05	22.33	6.32	0.00
One Year Ago <i>07-16-2019</i>	93.14	6.86	1.67	0.58	0.00	0.00

Intensity:

- None
- D0 Abnormally Dry
- D1 Moderate Drought
- D2 Severe Drought
- D3 Extreme Drought
- D4 Exceptional Drought

The Drought Monitor focuses on broad-scale conditions. Local conditions may vary. For more information on the Drought Monitor, go to <https://droughtmonitor.unl.edu/About.aspx>

Author:

David Miskus
NOAA/NWS/NCEP/CPC



Source: National Drought Mitigation Center, a partnership with USDA, U.S. Department of Commerce/NOAA, <http://droughtmonitor.unl.edu>.