



# Texas Crop Progress and Condition

Southern Plains Regional Field Office  
Post Office Box 70 Austin, Texas 78767  
(800) 626-3142 · FAX (855) 270-2725 · [www.nass.usda.gov/tx](http://www.nass.usda.gov/tx)

**Issue: TX-CW2820**

**Weekly Summary for July 27-August 2**

**Released: August 3, 2020**

Most of the state received from trace amounts up to 3.0 inches of rain. Areas of the Upper Coast, the Northern High Plains, South Central, and South East received up to 6.0 inches with a few isolated areas of South Texas and the Lower Valley reporting up to 15.0 inches in the wake of hurricane Hanna. There were 5.5 days suitable for fieldwork.

**Row Crops:** Corn harvest continued throughout most of the southern half of the state but slowed where precipitation was heavy. Producers were preparing for harvest in the High and Low Plains, as well as the Cross Timbers. Peanuts in the Southern High Plains were in the pegging stage while in South Texas they reached the pod stage. Soybeans in the Blacklands struggled due to inadequate moisture while sunflowers continued to progress. Sorghum harvest throughout much of the state continued or would begin soon. The majority of sorghum for grain in the Southern High Plains was not harvested due to poor growth caused by inadequate moisture. In the Northern Low Plains, sorghum crops showed signs of increased counts of cinch bugs as well as damage from hail. Rice harvest had begun in South Central Texas but halted in the Upper Coast due to rain. Cotton reached the boll stage in the High Plains but in the Southern High Plains some dryland fields were plowed under due to poor growth. Cotton harvest in areas of the Coastal Bend was stalled as producers waited on fields to dry. Meanwhile, winds and heavy rains from hurricane Hanna damaged many acres of cotton in the Lower Valley.

**Fruit, Vegetable and Specialty Crops:** Pecan trees continued to progress in the Trans-Pecos, the Edwards Plateau, and the Southern High Plains. However, some producers in the Southern High Plains expected less than a full harvest due to previous freeze and lack of moisture. Melon harvest continued in South Texas and the Southern High Plains. In the Lower Valley, citrus trees were damaged by high winds from hurricane Hanna.

**Livestock, Range and Pasture:** Supplemental feeding increased due to dry conditions in areas of the High Plains and the Northern Low Plains. Flies were a nuisance to livestock within areas of the Blacklands. Grasshopper presence throughout much of the Low Plains continued to be an issue for grasslands. Pasture and range condition were mostly rated fair to poor.

### Crop Progress

Stage	Percent of Acreage			
	Current Week	Previous Week	Previous Year	5 Year Average
Corn				
Silked	96	92	93	94
Dough	77	66	71	72
Dented	58	45	59	58
Mature	40	(NA)	22	42
Cotton				
Squaring	90	83	91	89
Setting Bolls	45	34	45	43
Bolls Opening	10	(NA)	13	11
Peanuts				
Pegging	68	50	54	63
Rice				
Headed	95	93	92	93
Harvested	15	11	7	14
Sorghum				
Headed	84	81	81	83
Coloring	70	65	71	66
Mature	57	45	58	55
Harvested	35	(NA)	43	41
Soybeans				
Blooming	83	77	78	83
Setting Pods	58	48	57	58
Dropping Leaves	8	(NA)	4	7
Sunflowers				
Harvested	35	28	32	20

(NA) Not available.

### Crop Condition

Crop	Percent of Acreage					Index <sup>1</sup>	
	Excellent	Good	Fair	Poor	Very Poor	2020	2019
Corn	12	34	39	12	3	70	80
Cotton	5	20	51	19	5	59	69
Peanuts	3	60	28	9	0	76	87
Rice	14	56	29	1	0	83	84
Sorghum	19	30	39	10	2	74	83
Soybeans	14	49	33	4	0	80	69
Range and Pasture	2	20	41	27	10	52	63

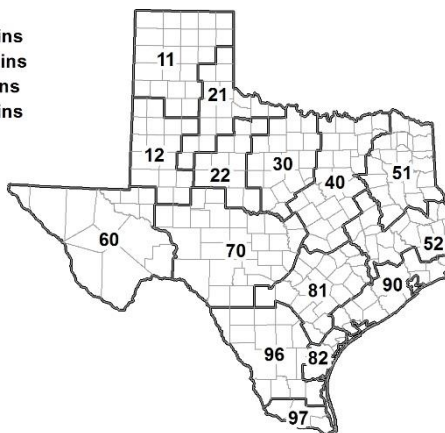
<sup>1</sup> The formula for the condition index is  $I = (5V + 25P + 60F + 90G + 110E)/100$  where I = crop condition index and V, P, F, G, E = percentage of crop rated very poor, poor, fair, good, excellent.

### Soil Moisture and Days Suitable by District

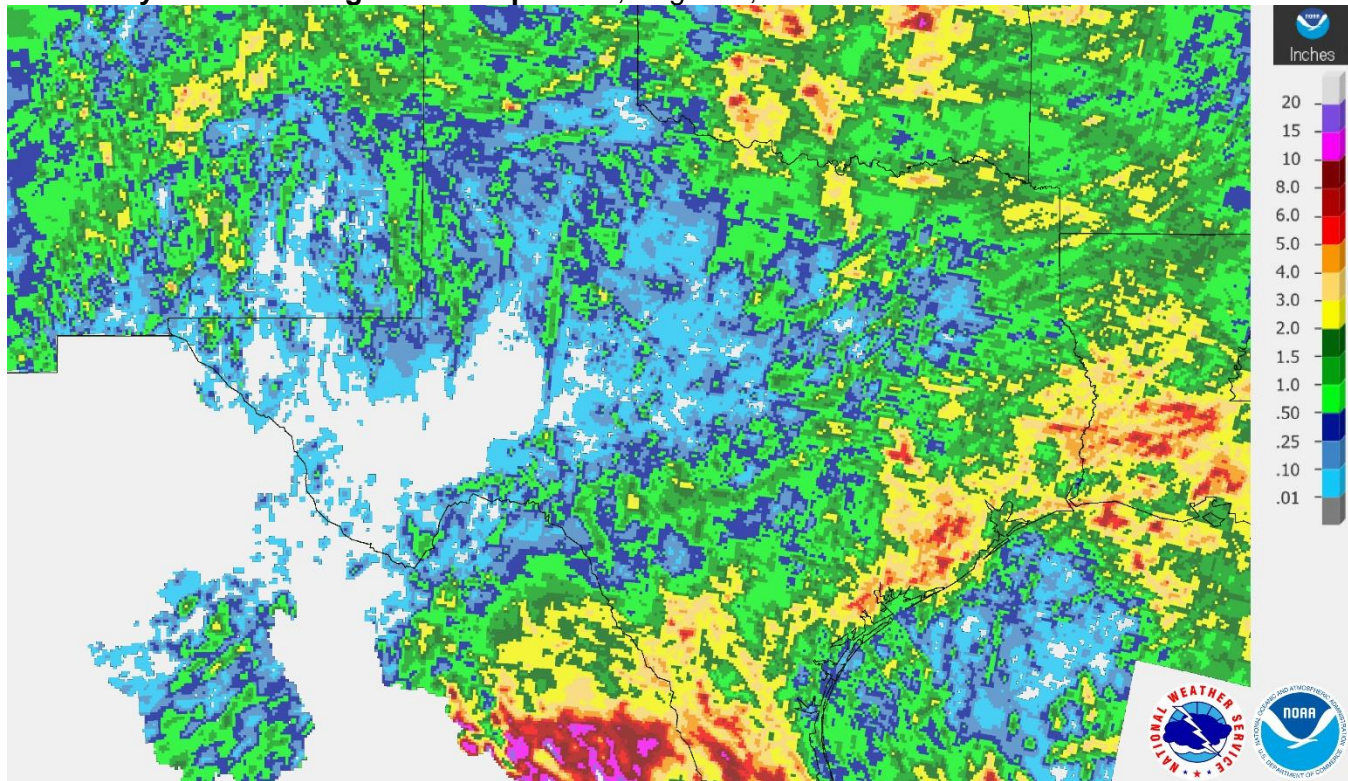
District	Topsoil Moisture Condition by District				Subsoil Moisture Condition by District				Days Suitable for Fieldwork
	Percentage of Acreage				Percentage of Acreage				
	Very Short	Short	Adequate	Surplus	Very Short	Short	Adequate	Surplus	
11	27	48	16	9	24	45	21	10	4.7
12	22	51	26	1	15	58	24	3	7.0
21	6	46	48	0	7	55	38	0	4.9
22	30	46	21	3	34	45	19	2	6.1
30	22	51	27	0	17	47	36	0	6.1
40	26	33	35	6	28	31	35	6	5.7
51	14	35	50	1	23	35	41	1	6.8
52	15	29	53	3	6	36	54	4	6.2
60	12	49	39	0	13	52	35	0	6.4
70	50	41	9	0	33	54	13	0	6.9
81	31	45	22	2	31	47	22	0	5.4
82	0	10	79	11	0	21	70	9	3.1
90	0	2	22	76	0	18	33	49	1.8
96	22	25	46	7	26	26	44	4	4.6
97	5	43	48	4	1	36	38	25	3.4
State	22	41	29	8	20	44	29	7	5.5

### Texas Agricultural Districts

- 11 Northern High Plains
- 12 Southern High Plains
- 21 Northern Low Plains
- 22 Southern Low Plains
- 30 Cross Timbers
- 40 Blacklands
- 51 North East
- 52 South East
- 60 Trans-Pecos
- 70 Edwards Plateau
- 81 South Central
- 82 Coastal Bend
- 90 Upper Coast
- 96 South
- 97 Lower Valley

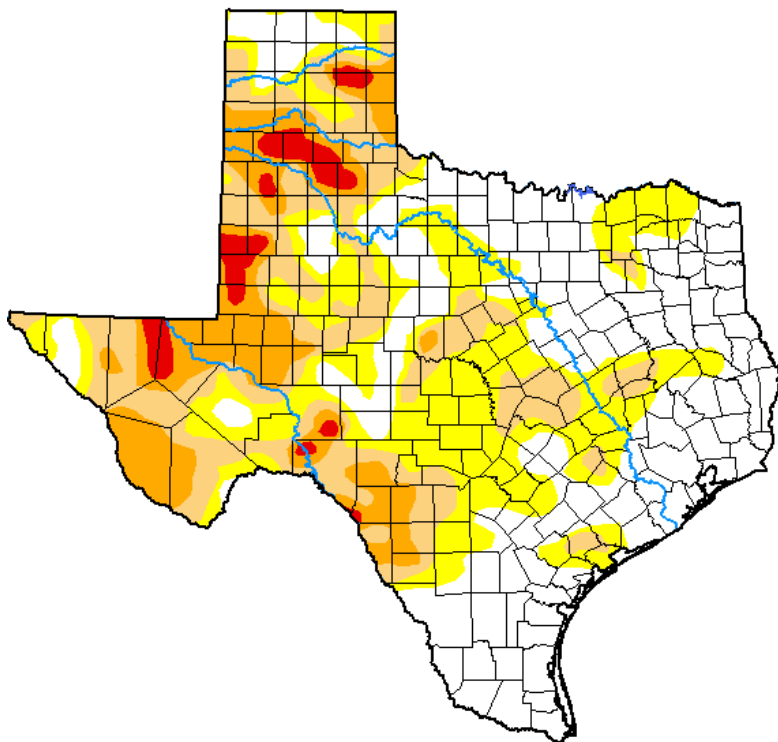


## Seven Day Observed Regional Precipitation, August 2, 2020.



Source: National Weather Service, [www.nws.noaa.gov](http://www.nws.noaa.gov).

## Drought Monitor, Valid July 28, 2020.



*Drought Conditions (Percent Area)*

	None	D0-D4	D1-D4	D2-D4	D3-D4	D4
<b>Current</b>	39.66	60.34	34.39	14.99	2.99	0.00
<b>Last Week</b> 07-21-2020	33.96	66.04	36.44	13.88	2.84	0.00
<b>3 Months Ago</b> 04-28-2020	71.46	28.54	15.63	6.90	1.59	0.00
<b>Start of Calendar Year</b> 12-31-2019	44.69	55.31	36.12	9.19	0.74	0.00
<b>Start of Water Year</b> 10-01-2019	31.74	68.26	46.05	22.33	6.32	0.00
<b>One Year Ago</b> 07-30-2019	76.49	23.51	4.31	0.42	0.00	0.00

Intensity:

- None
- D0 Abnormally Dry
- D1 Moderate Drought
- D2 Severe Drought
- D3 Extreme Drought
- D4 Exceptional Drought

*The Drought Monitor focuses on broad-scale conditions. Local conditions may vary. For more information on the Drought Monitor, go to <https://droughtmonitor.unl.edu/About.aspx>*

Author:

Richard Heim  
NCEI/NOAA



Source: National Drought Mitigation Center, a partnership with USDA, U.S. Department of Commerce/NOAA, <http://droughtmonitor.unl.edu>.

## Texas Crop Progress and Condition (3 August 2020)

USDA, National Agricultural Statistics Service, Southern Plains Regional Field Office