



Texas Crop Progress and Condition

Southern Plains Regional Field Office
Post Office Box 70 Austin, Texas 78767
(800) 626-3142 · FAX (855) 270-2725 · www.nass.usda.gov/tx

Issue: TX-CW3020

Weekly Summary for August 10-August 16

Released: August 17, 2020

Most of the state experienced triple digit temperatures along with little to no precipitation. Most areas that did receive precipitation, reported from trace amounts up to 2.0 inches of rain. Very isolated areas of North East Texas received from 3.0 to 10.0 inches of rain. There were 6.2 days suitable for fieldwork.

Row Crops: Corn harvest continued to progress in areas of the Blacklands, South East Texas, the Edwards Plateau, South Central Texas and the Upper Coast. Hail damaged corn and cotton in areas of the Northern High Plains. Peanuts continued to improve in areas of the Southern High Plains and South Texas. Sorghum harvest continued in areas of the Edwards Plateau, the Blacklands and South Texas. Meanwhile, sorghum fields in the Cross Timbers were damaged by feral hogs. Rice harvest continued in the Upper Coast. Hail, high winds, and extreme heat have taken a major toll on dryland cotton in areas of the High and Low Plains as well as South East Texas. Cotton harvest had begun in the Coastal Bend and the Upper Coast and would begin soon in South Central Texas. In areas of the Lower Valley, many producers opted for crop insurance payments over harvesting after assessing damage from hurricane Hanna.

Fruit, Vegetable and Specialty Crops: Pecan orchards in the Trans-Pecos neared harvest. Meanwhile, orchards in the Edwards Plateau and South Central Texas struggled with dry conditions. Citrus groves in the Lower Valley experienced hurricane-related crop losses of up to 50 percent. Meanwhile, melon production continued in areas of South Texas.

Livestock, Range and Pasture: Supplemental feeding continued in the Cross Timbers, the Edwards Plateau, and South Texas due to dry conditions. Feral hogs continued to be a problem for areas of East Texas and the Cross Timbers. Pasture and range condition were mostly rated fair to poor.

Crop Progress

Stage	Percent of Acreage			
	Current Week	Previous Week	Previous Year	5 Year Average
Corn				
Dough	88	84	89	88
Dented	75	67	78	70
Mature	55	52	48	54
Harvested	29	(NA)	19	39
Cotton				
Setting Bolls	77	66	78	77
Bolls Opening	19	13	32	18
Peanuts				
Pegging	85	75	84	88
Rice				
Harvested	55	34	32	49
Sorghum				
Headed	91	89	88	88
Coloring	75	71	76	74
Mature	68	63	69	62
Harvested	55	48	53	50
Soybeans				
Blooming	95	87	91	94
Setting Pods	80	73	75	77
Dropping Leaves	30	20	28	27
Sunflowers				
Harvested	41	38	41	35

(NA) Not available

Crop Condition

Crop	Percent of Acreage					Index ¹	
	Excellent	Good	Fair	Poor	Very Poor	2020	2019
Corn	13	34	36	12	5	70	74
Cotton	5	22	40	23	10	56	67
Peanuts	2	67	23	7	1	78	85
Rice	13	73	14	0	0	88	79
Sorghum	13	32	33	14	8	67	83
Soybeans	10	48	40	1	1	79	68
Range and Pasture	2	19	33	31	15	48	50

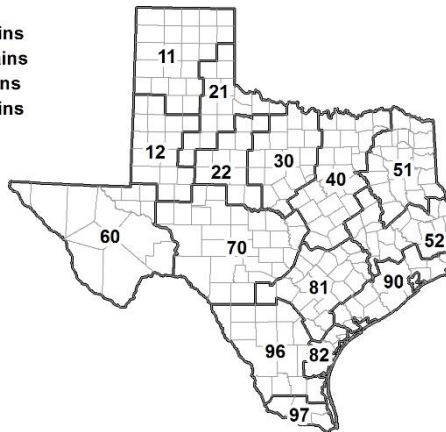
¹ The formula for the condition index is $I = (5V + 25P + 60F + 90G + 110E)/100$ where I = crop condition index and V, P, F, G, E = percentage of crop rated very poor, poor, fair, good, excellent.

Soil Moisture and Days Suitable by District

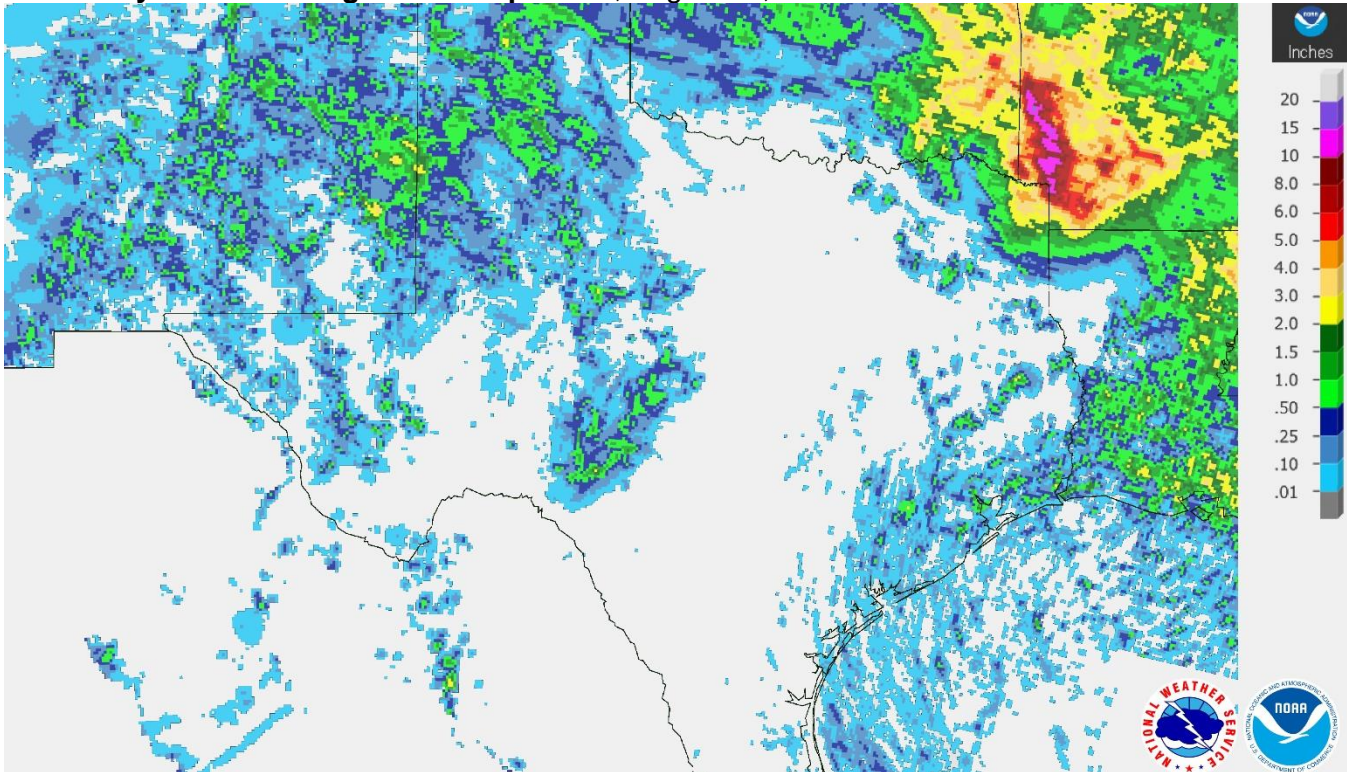
District	Topsoil Moisture Condition by District				Subsoil Moisture Condition by District				Days Suitable for Fieldwork
	Percentage of Acreage				Percentage of Acreage				
	Very Short	Short	Adequate	Surplus	Very Short	Short	Adequate	Surplus	
11	27	48	16	9	24	45	21	10	4.7
12	22	51	26	1	15	58	24	3	7.0
21	26	56	18	0	17	53	24	6	6.3
22	58	30	11	1	45	38	15	2	6.7
30	28	61	11	0	22	63	15	0	6.3
40	37	47	16	0	34	40	26	0	6.9
51	17	30	51	2	23	31	45	1	6.6
52	30	44	23	3	28	45	23	4	6.9
60	12	70	18	0	12	72	16	0	6.3
70	65	29	6	0	55	39	5	1	6.9
81	33	58	9	0	26	60	14	0	6.7
82	10	36	46	8	3	36	58	3	7.0
90	2	11	85	2	0	25	74	1	5.1
96	41	42	17	0	39	40	21	0	6.6
97	0	7	52	41	0	7	51	42	6.4
State	29	44	23	4	24	45	26	5	6.2

Texas Agricultural Districts

- 11 Northern High Plains
- 12 Southern High Plains
- 21 Northern Low Plains
- 22 Southern Low Plains
- 30 Cross Timbers
- 40 Blacklands
- 51 North East
- 52 South East
- 60 Trans-Pecos
- 70 Edwards Plateau
- 81 South Central
- 82 Coastal Bend
- 90 Upper Coast
- 96 South
- 97 Lower Valley

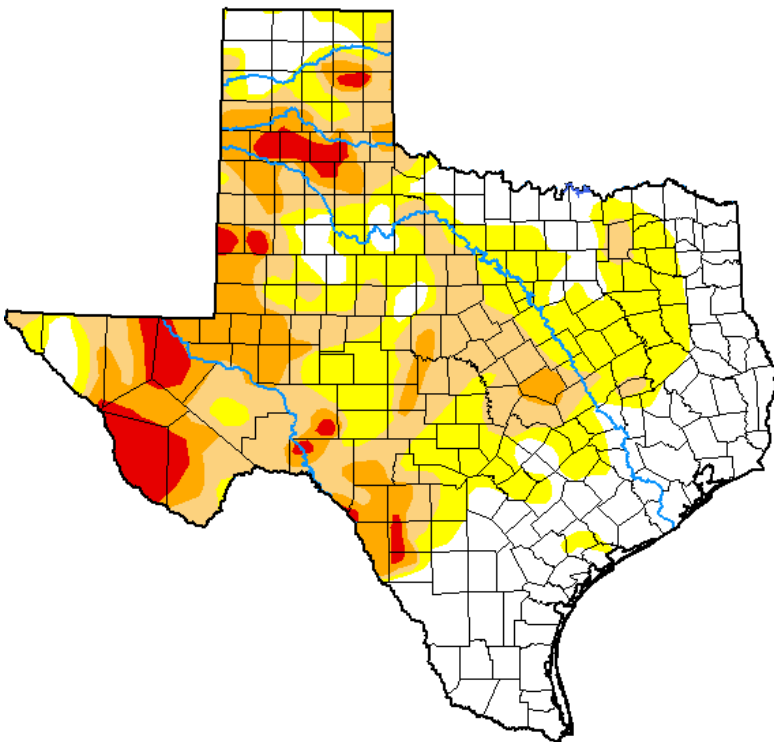


Seven Day Observed Regional Precipitation, August 16, 2020.



Source: National Weather Service, www.nws.noaa.gov.

Drought Monitor, Valid August 11, 2020.



Drought Conditions (Percent Area)

	None	D0-D4	D1-D4	D2-D4	D3-D4	D4
Current	34.17	65.83	39.93	17.68	4.88	0.00
Last Week 08-04-2020	41.71	58.29	32.56	15.42	2.97	0.00
3 Months Ago 05-12-2020	54.68	45.32	14.65	5.44	1.99	0.00
Start of Calendar Year 12-31-2019	44.69	55.31	36.12	9.19	0.74	0.00
Start of Water Year 10-01-2019	31.74	68.26	46.05	22.33	6.32	0.00
One Year Ago 08-13-2019	35.20	64.80	22.18	4.08	0.21	0.00

Intensity:

- None
- D0 Abnormally Dry
- D1 Moderate Drought
- D2 Severe Drought
- D3 Extreme Drought
- D4 Exceptional Drought

The Drought Monitor focuses on broad-scale conditions. Local conditions may vary. For more information on the Drought Monitor, go to <https://droughtmonitor.unl.edu/About.aspx>

Author:

Brian Fuchs
National Drought Mitigation Center



Source:

National Drought Mitigation Center, a partnership with USDA, U.S. Department of Commerce/NOAA, <http://droughtmonitor.unl.edu>.

Texas Crop Progress and Condition (17 August 2020)

USDA, National Agricultural Statistics Service, Southern Plains Regional Field Office