



Texas Crop Progress and Condition

Southern Plains Regional Field Office
Post Office Box 70 Austin, Texas 78767
(800) 626-3142 · FAX (855) 270-2725 · www.nass.usda.gov/tx

Issue: TX-CW3220

Weekly Summary for Aug 24-Aug 30

Released: August 31, 2020

Most of the state reported from trace amounts up to 3.0 inches of rain during the past week. Isolated areas of the Upper Coast, East Texas and the Blacklands received from 4.0 to 15.0 inches of rain caused by Hurricane Laura. There were 5.8 days suitable for fieldwork.

Small Grains: Producers were preparing to seed small grains. Many were waiting on moisture while a few producers in the High Plains were dusting wheat in.

Row Crops: Harvest continued to progress in areas of the Northern Plains and Blacklands. Dryland cotton in areas of the High and Low Plains, the Blacklands, and the Edwards Plateau continued to show signs of stress where moisture had been inadequate. Meanwhile, harvest continued in areas of South Central Texas, the Coastal Bend and South Texas. Soybeans continued to progress in areas of the Blacklands. Sorghum harvest continued to progress in South Texas for some late plantings. Rice harvest continued in areas of South Central Texas and the Upper Coast. Peanuts continued to improve in the Southern High Plains.

Fruit, Vegetable and Specialty Crops: Pecan orchards progressed in the Southern High Plains, the Trans-Pecos, the Edwards Plateau, and South Texas but showed signs of drought and insect stress in the Cross Timbers and North East Texas, respectively. Preparations were underway for winter vegetable plantings in South Texas.

Livestock, Range and Pasture:

Supplemental feeding continued in the Northern High Plains, South Central Texas, the Blacklands, the Edwards Plateau, and South Texas due to dry conditions. Producers in the Northern Low Plains continued to monitor the threat of wildfires caused by hot and dry weather conditions. Feral hogs continued to be a problem for areas of East Texas. Pasture and range condition were mostly rated fair to poor.

Crop Progress

Stage	Percent of Acreage			
	Current Week	Previous Week	Previous Year	5 Year Average
Corn				
Dough	95	90	95	95
Dented	83	80	88	81
Mature	65	60	52	60
Harvested	55	50	48	52
Cotton				
Setting Bolls	92	86	93	93
Bolls Opening	33	27	37	24
Peanuts				
Pegging	95	90	91	97
Mature	10	7	5	6
Rice				
Harvested	77	71	60	78
Sorghum				
Coloring	83	81	89	81
Mature	73	70	75	72
Harvested	69	65	71	58
Soybeans				
Setting Pods	81	81	77	89
Dropping Leaves	44	36	43	46
Harvested	21	10	29	21
Sunflowers				
Harvested	47	44	47	41

Crop Condition

Crop	Percent of Acreage					Index ¹	
	Excellent	Good	Fair	Poor	Very Poor	2020	2019
Corn	11	31	39	14	5	67	76
Cotton	5	24	29	18	24	50	65
Peanuts	1	61	29	8	1	75	88
Rice	13	73	14	0	0	88	80
Sorghum	13	32	33	14	8	67	82
Soybeans	13	46	35	5	1	78	67
Range and Pasture	1	13	33	34	19	42	47

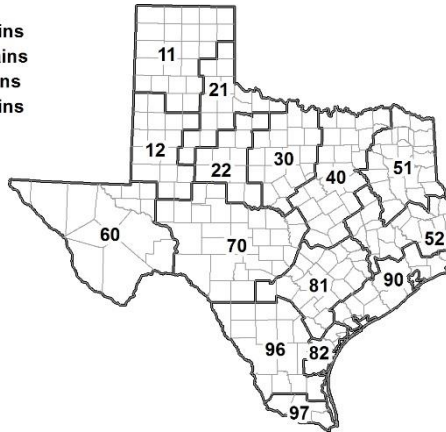
¹ The formula for the condition index is $I = (5V + 25P + 60F + 90G + 110E)/100$ where I = crop condition index and V, P, F, G, E = percentage of crop rated very poor, poor, fair, good, excellent.

Soil Moisture and Days Suitable by District

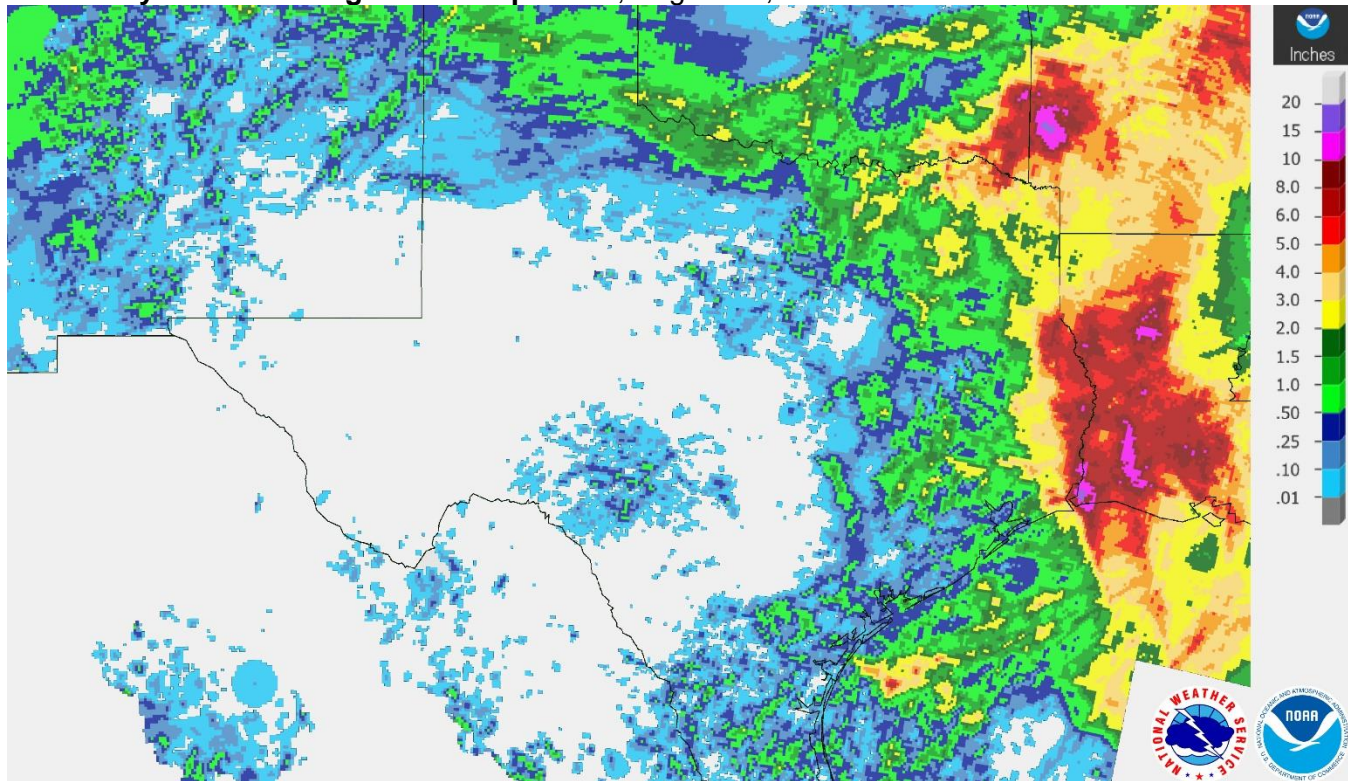
District	Topsoil Moisture Condition by District				Subsoil Moisture Condition by District				Days Suitable for Fieldwork
	Percentage of Acreage				Percentage of Acreage				
	Very Short	Short	Adequate	Surplus	Very Short	Short	Adequate	Surplus	
11	45	39	14	2	39	42	18	1	5.3
12	50	41	9	0	27	64	9	0	4.3
21	29	47	24	0	19	53	28	0	6.3
22	55	36	9	0	41	40	19	0	6.7
30	34	54	12	0	29	57	13	1	6.0
40	43	29	28	0	44	29	27	0	5.9
51	26	34	38	2	28	37	32	3	5.6
52	29	52	16	3	29	57	11	3	6.6
60	38	29	33	0	38	28	34	0	6.3
70	54	30	14	2	43	43	14	0	7.0
81	20	62	18	0	17	55	28	0	6.4
82	13	43	44	0	10	42	48	0	7.0
90	7	52	41	0	7	39	54	0	6.9
96	48	48	4	0	46	51	2	1	5.7
97	11	43	46	0	2	20	52	26	7.0
State	39	41	19	1	31	46	22	1	5.8

Texas Agricultural Districts

- 11 Northern High Plains
- 12 Southern High Plains
- 21 Northern Low Plains
- 22 Southern Low Plains
- 30 Cross Timbers
- 40 Blacklands
- 51 North East
- 52 South East
- 60 Trans-Pecos
- 70 Edwards Plateau
- 81 South Central
- 82 Coastal Bend
- 90 Upper Coast
- 96 South
- 97 Lower Valley

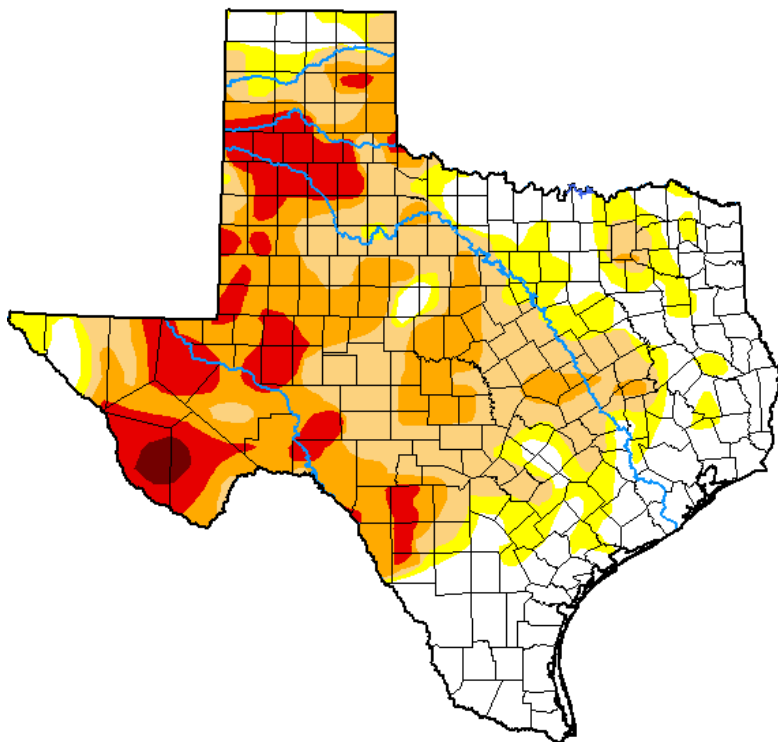


Seven Day Observed Regional Precipitation, August 30, 2020.



Source: National Weather Service, www.nws.noaa.gov

Drought Monitor, Valid August 25, 2020.



Drought Conditions (Percent Area)

	None	D0-D4	D1-D4	D2-D4	D3-D4	D4
Current	29.44	70.56	57.27	33.49	12.24	0.74
Last Week <i>08-18-2020</i>	36.20	63.80	47.63	23.91	7.81	0.33
3 Months Ago <i>05-26-2020</i>	66.97	33.03	7.85	1.19	0.00	0.00
Start of Calendar Year <i>12-31-2019</i>	44.69	55.31	36.12	9.19	0.74	0.00
Start of Water Year <i>10-01-2019</i>	31.74	68.26	46.05	22.33	6.32	0.00
One Year Ago <i>08-27-2019</i>	25.90	74.10	37.58	8.75	1.21	0.00

Intensity:

- None
- D0 Abnormally Dry
- D1 Moderate Drought
- D2 Severe Drought
- D3 Extreme Drought
- D4 Exceptional Drought

The Drought Monitor focuses on broad-scale conditions. Local conditions may vary. For more information on the Drought Monitor, go to <https://droughtmonitor.unl.edu/About.aspx>

Author:

David Simeral
Western Regional Climate Center



Source: National Drought Mitigation Center, a partnership with USDA, U.S. Department of Commerce/NOAA, <http://droughtmonitor.unl.edu>

Texas Crop Progress and Condition (31 August 2020)

USDA, National Agricultural Statistics Service, Southern Plains Regional Field Office