



Texas Crop Progress and Condition

Southern Plains Regional Field Office
Post Office Box 70 Austin, Texas 78767
(800) 626-3142 · FAX (855) 270-2725 · www.nass.usda.gov/tx

Issue: TX-CW3320

Weekly Summary for August 31-September 6

Released: September 8, 2020

Most of Texas reported from trace amounts up to 3.0 inches of rain during the past week. Isolated areas of the Edwards Plateau, East Texas, the Blacklands, South Central Texas, the Coastal Bend, South Texas, and the Lower Valley received from 4.0 to 15.0 inches of rain for the week. There were 5.2 days suitable for fieldwork.

Small Grains: Producers made preparations to seed small grains. Many were still waiting on moisture, while a few in the High Plains, the Southern Low Plains, and the Cross Timbers had begun planting.

Row Crops: Corn harvest had been completed in most areas of the state, with a few fields remaining in the Northern High Plains. Irrigated cotton continued to make good progress in areas of the Southern High Plains, South Central Texas, and the Trans-Pecos. Cotton harvest continued in areas of the Blacklands, South Central Texas, the Coastal Bend, the Upper Coast and South Texas. Development was slowed in the Southern Low Plains and the Blacklands due to the lack of adequate moisture. Conversely, cotton harvest in South East Texas had been halted due to heavy rains. Soybeans in the Blacklands continued to make favorable progress where moisture was adequate. Sorghum harvest was completed in most areas of the state, but had been delayed due to recent rains in areas of the Blacklands. Rice harvest was mostly complete in areas of South Central Texas and the Upper Coast. Peanuts continued to improve in the Southern High Plains, while irrigation continued in South Texas.

Fruit, Vegetable and Specialty Crops: Pecan orchards struggled due to dry conditions in areas of South Central Texas and the Edwards Plateau. Meanwhile, irrigated pecan orchards progressed favorably in areas of the Southern High Plains and South Texas. Many pecan growers in areas of the Trans-Pecos anticipated needing to irrigate orchards next month, if additional rainfall is not received.

Livestock, Range and Pasture: Supplemental feeding continued in the Northern High Plains, South Central Texas, the Southern Low Plains, the Blacklands, and South Texas due to dry conditions. Pasture fires became more frequent in areas of the Trans-Pecos and the Edwards Plateau due to continuing hot and dry conditions. Feral hogs continued to be a problem for areas of East Texas and the Blacklands. Pasture and range condition were mostly rated fair to poor.

Crop Progress

Stage	Percent of Acreage			
	Current Week	Previous Week	Previous Year	5 Year Average
Corn				
Dented	93	83	93	86
Mature	73	65	56	63
Harvested	62	55	51	55
Cotton				
Setting Bolls	95	92	99	97
Bolls Opening	39	33	39	28
Peanuts				
Mature	18	10	9	10
Rice				
Harvested	93	77	74	84
Sorghum				
Coloring	88	83	92	84
Mature	77	73	79	74
Harvested	73	69	74	61
Soybeans				
Setting Pods	89	81	83	94
Dropping Leaves	54	44	55	53
Harvested	34	21	37	34
Sunflowers				
Harvested	50	47	54	45

Crop Condition

Crop	Percent of Acreage					Index ¹	
	Excellent	Good	Fair	Poor	Very Poor	2020	2019
Corn	11	31	39	14	5	67	74
Cotton	6	23	29	24	18	52	62
Peanuts	1	57	33	8	1	74	81
Rice	13	73	14	0	0	88	80
Sorghum	13	32	33	14	8	67	82
Soybeans	11	42	40	6	1	75	69
Range and Pasture	1	15	31	35	18	43	46

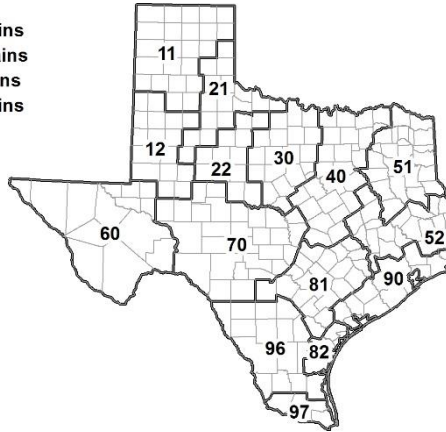
¹ The formula for the condition index is $I = (5V + 25P + 60F + 90G + 110E)/100$ where I = crop condition index and V, P, F, G, E = percentage of crop rated very poor, poor, fair, good, excellent.

Soil Moisture and Days Suitable by District

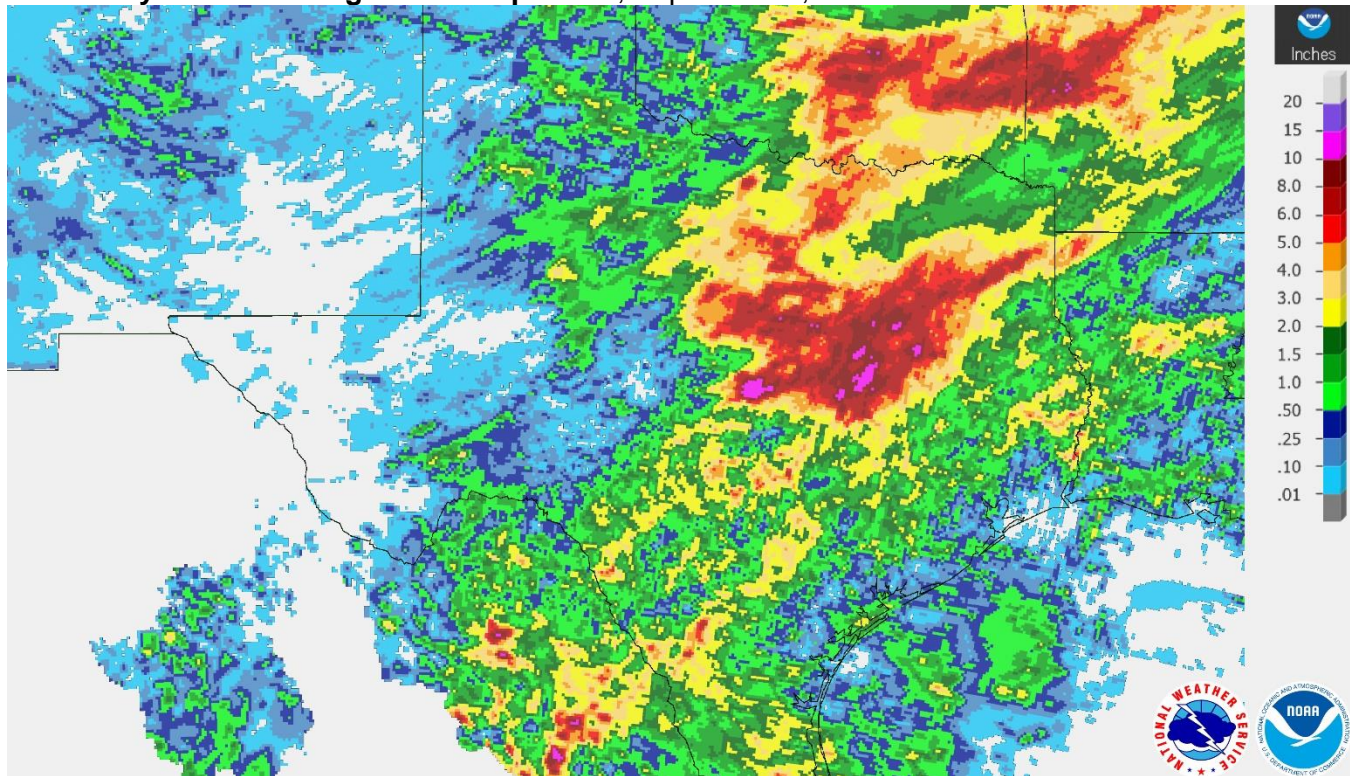
District	Topsoil Moisture Condition by District				Subsoil Moisture Condition by District				Days Suitable for Fieldwork
	Percentage of Acreage				Percentage of Acreage				
	Very Short	Short	Adequate	Surplus	Very Short	Short	Adequate	Surplus	
11	37	43	20	0	35	42	22	1	5.3
12	32	56	12	0	12	75	12	1	5.2
21	16	39	45	0	18	42	40	0	5.8
22	50	38	11	1	43	40	16	1	5.7
30	2	14	77	7	5	20	74	1	4.2
40	1	5	53	41	3	12	55	30	2.6
51	26	34	38	2	28	37	32	3	5.6
52	1	23	41	35	2	24	39	35	4.3
60	38	32	30	0	37	30	33	0	6.3
70	49	26	19	6	42	41	14	3	6.4
81	20	62	18	0	17	55	28	0	6.4
82	16	48	36	0	18	42	40	0	7.0
90	11	62	27	0	9	46	45	0	6.9
96	21	51	28	0	24	52	24	0	5.8
97	7	45	42	6	0	23	56	21	6.7
State	25	39	29	7	20	43	31	6	5.2

Texas Agricultural Districts

- 11 Northern High Plains
- 12 Southern High Plains
- 21 Northern Low Plains
- 22 Southern Low Plains
- 30 Cross Timbers
- 40 Blacklands
- 51 North East
- 52 South East
- 60 Trans-Pecos
- 70 Edwards Plateau
- 81 South Central
- 82 Coastal Bend
- 90 Upper Coast
- 96 South
- 97 Lower Valley

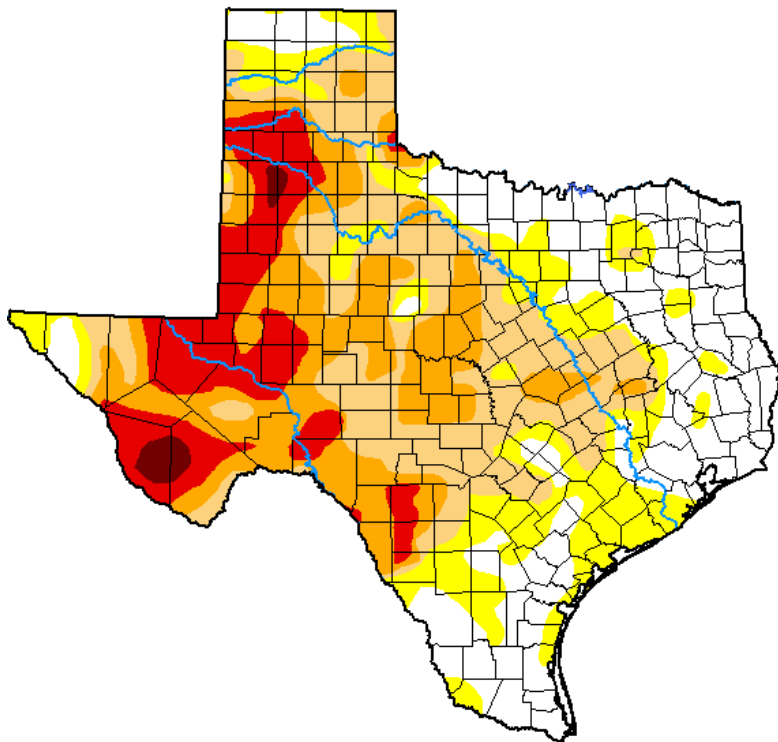


Seven Day Observed Regional Precipitation, September 7, 2020.



Source: National Weather Service, www.nws.noaa.gov.

Drought Monitor, Valid September 1, 2020.



Drought Conditions (Percent Area)

	None	D0-D4	D1-D4	D2-D4	D3-D4	D4
Current	26.75	73.25	55.13	32.72	13.09	0.98
Last Week 08-25-2020	29.44	70.56	57.27	33.49	12.24	0.74
3 Months Ago 06-02-2020	66.44	33.56	14.17	1.32	0.00	0.00
Start of Calendar Year 12-31-2019	44.69	55.31	36.12	9.19	0.74	0.00
Start of Water Year 10-01-2019	31.74	68.26	46.05	22.33	6.32	0.00
One Year Ago 09-03-2019	33.59	66.41	42.90	10.26	1.73	0.00

Intensity:

- None
- D0 Abnormally Dry
- D1 Moderate Drought
- D2 Severe Drought
- D3 Extreme Drought
- D4 Exceptional Drought

The Drought Monitor focuses on broad-scale conditions. Local conditions may vary. For more information on the Drought Monitor, go to <https://droughtmonitor.unl.edu/About.aspx>

Author:

Richard Tinker
CPC/NOAA/NWS/NCEP



Source: National Drought Mitigation Center, a partnership with USDA, U.S. Department of Commerce/NOAA, <http://droughtmonitor.unl.edu>.

Texas Crop Progress and Condition (8 September 2020)

USDA, National Agricultural Statistics Service, Southern Plains Regional Field Office