



# Texas Crop Progress and Condition

Southern Plains Regional Field Office  
Post Office Box 70 Austin, Texas 78767  
(800) 626-3142 · FAX (855) 270-2725 · [www.nass.usda.gov/tx](http://www.nass.usda.gov/tx)

**Issue: TX-CW3420**

**Weekly Summary for September 7- 13**

**Released: September 14, 2020**

Most of Texas reported from trace amounts up to 3.0 inches of rain during the past week. Isolated areas of the Low Plains, the Cross Timbers, the Edwards Plateau, South Central Texas, South Texas, the Blacklands and the Upper Coast received from 4.0 to 10.0 inches of rain for the week. Very isolated areas in the Edwards Plateau received up to 15.0 inches of rain. There were 4.8 days suitable for fieldwork.

**Small Grains:** Across the state, producers made preparations to seed, had begun seeding, or were waiting for fields to dry to begin seeding small grain crops.

**Row Crops:** Corn harvest was virtually completed in the Blacklands and South Texas. Meanwhile, producers in areas of the High Plains finished up final irrigation applications in anticipation of harvest beginning soon. Cotton harvest neared completion in areas of South Central Texas, the Coastal Bend, South Texas and the Upper Coast. Conversely, cotton progress slowed due to cool, wet conditions in areas of the High Plains, the Northern Low Plains, the Blacklands, and the Edwards Plateau. Rice harvest was mostly complete in areas of South Central Texas and the Upper Coast. Peanuts continued to improve in the Southern High Plains, while harvest will begin soon in South Texas.

**Fruit, Vegetable and Specialty Crops:** Pecans progressed in the Southern High Plains, the Cross Timbers, and the Trans-Pecos. Irrigation continued in the Cross Timbers and the Edwards Plateau, while harvest was expected soon in areas of South Central and South Texas.

**Livestock, Range and Pasture:** Supplemental feeding continued in South Central and South Texas due to dry conditions. Stock tanks were replenished due to recent rains in areas of Southern Low Plains, the Cross Timbers, the Blacklands, the Edwards Plateau, and South Texas. Feral hogs continued to be a problem for areas of East Texas and the Blacklands. Pasture and range condition were mostly rated fair to poor.

### Crop Progress

Stage	Percent of Acreage			
	Current Week	Previous Week	Previous Year	5 Year Average
Corn				
Dented	97	93	96	90
Mature	79	73	64	70
Harvested	67	62	57	59
Cotton				
Bolls Opening	45	39	45	34
Harvested	13	(NA)	14	14
Peanuts				
Mature	24	18	13	14
Rice				
Harvested	96	93	88	93
Sorghum				
Coloring	92	88	96	88
Mature	81	77	85	77
Harvested	77	73	78	66
Soybeans				
Setting Pods	95	89	90	97
Dropping Leaves	64	54	63	65
Harvested	43	34	44	41
Sunflowers				
Harvested	56	50	61	50
Winter Wheat				
Planted	7	4	3	7

(NA) Not available.

### Crop Condition

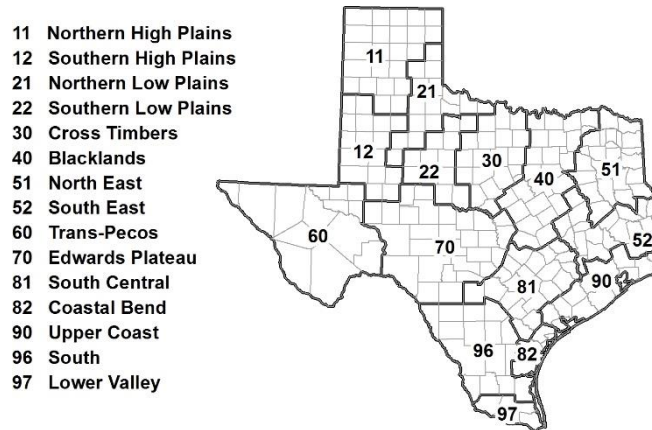
Crop	Percent of Acreage					Index <sup>1</sup>	
	Excellent	Good	Fair	Poor	Very Poor	2020	2019
Corn	11	31	39	14	5	67	74
Cotton	6	24	28	31	11	53	62
Peanuts	1	48	37	11	3	69	81
Rice	13	73	14	0	0	88	80
Sorghum	13	32	33	14	8	67	82
Soybeans	11	51	31	6	1	78	65
Range and Pasture	4	20	36	26	14	51	47

<sup>1</sup> The formula for the condition index is  $I = (5V + 25P + 60F + 90G + 110E)/100$  where I = crop condition index and V, P, F, G, E = percentage of crop rated very poor, poor, fair, good, excellent.

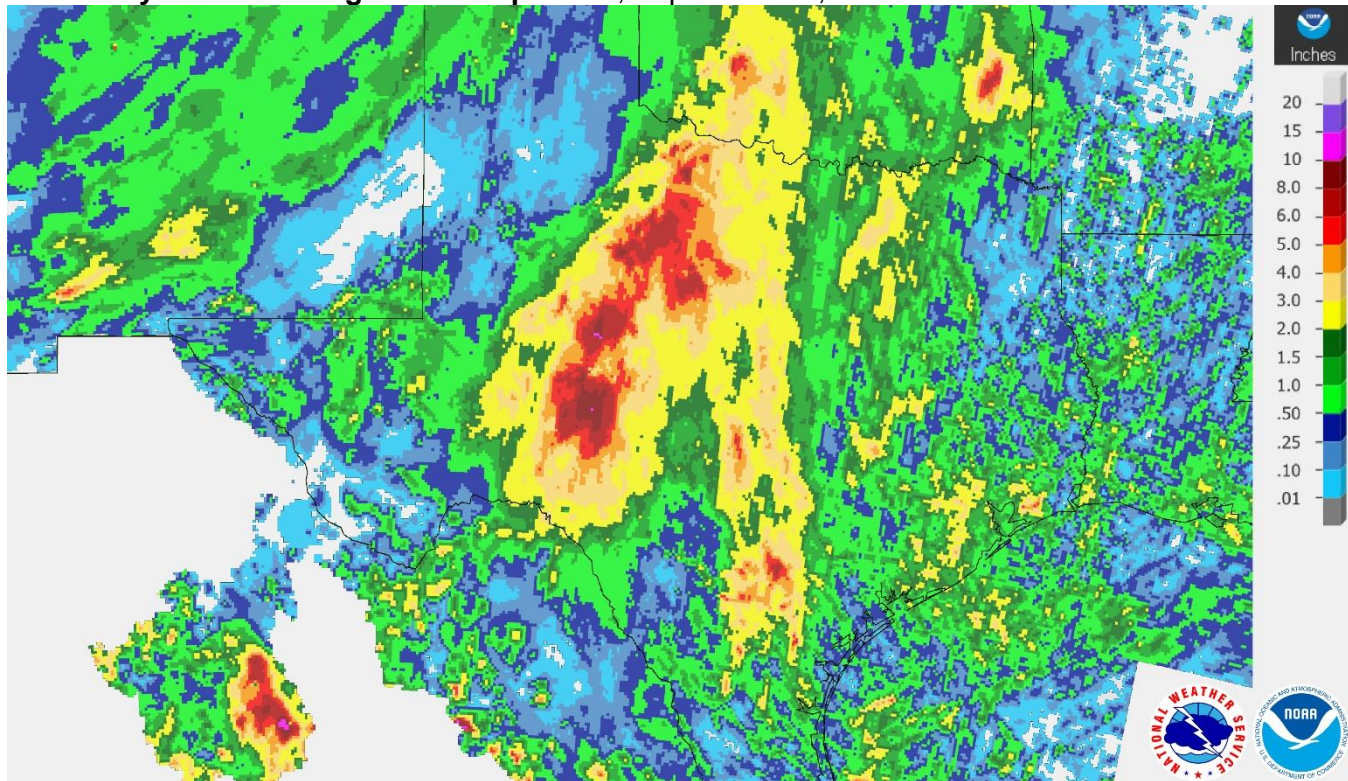
### Soil Moisture and Days Suitable by District

District	Topsoil Moisture Condition by District				Subsoil Moisture Condition by District				Days Suitable for Fieldwork
	Percentage of Acreage				Percentage of Acreage				
	Very Short	Short	Adequate	Surplus	Very Short	Short	Adequate	Surplus	
11	37	43	20	0	23	42	22	13	5.3
12	39	31	29	1	48	29	22	1	6.0
21	14	24	60	2	10	31	52	7	4.1
22	0	1	77	22	2	16	78	4	2.5
30	1	4	69	26	3	6	75	16	3.1
40	1	5	52	42	1	11	58	30	2.5
51	2	26	62	10	8	24	55	13	6.8
52	0	19	51	30	1	21	48	30	5.2
60	5	45	50	0	34	17	49	0	6.3
70	13	15	58	14	15	20	61	4	4.7
81	15	31	53	1	20	36	43	1	6.4
82	6	57	37	0	18	42	40	0	6.2
90	12	45	42	1	12	41	46	1	6.9
96	9	23	61	7	21	34	42	3	3.5
97	0	43	48	9	0	13	66	21	4.1
State	18	26	45	11	18	27	45	10	4.8

### Texas Agricultural Districts

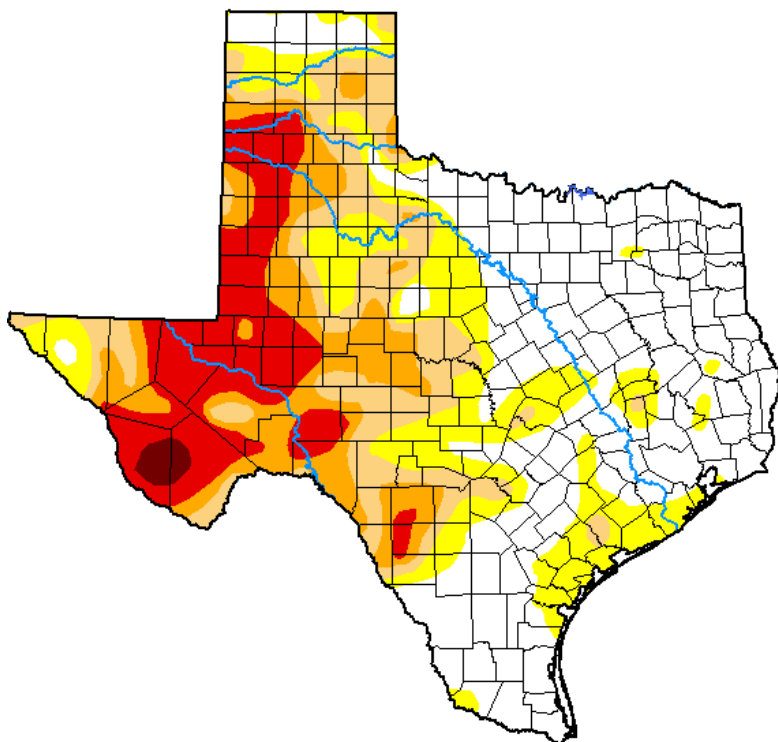


## Seven Day Observed Regional Precipitation, September 13, 2020.



Source: National Weather Service, [www.nws.noaa.gov](http://www.nws.noaa.gov).

## Drought Monitor, Valid September 8, 2020.



*Drought Conditions (Percent Area)*

	None	D0-D4	D1-D4	D2-D4	D3-D4	D4
<b>Current</b>	40.53	59.47	40.39	26.01	13.91	0.74
<b>Last Week</b> 09-01-2020	26.75	73.25	55.13	32.72	13.09	0.98
<b>3 Months Ago</b> 06-09-2020	58.07	41.93	22.82	5.61	0.58	0.00
<b>Start of Calendar Year</b> 12-31-2019	44.69	55.31	36.12	9.19	0.74	0.00
<b>Start of Water Year</b> 10-01-2019	31.74	68.26	46.05	22.33	6.32	0.00
<b>One Year Ago</b> 09-10-2019	28.16	71.84	53.42	17.43	2.76	0.00

Intensity:

- None
- D0 Abnormally Dry
- D1 Moderate Drought
- D2 Severe Drought
- D3 Extreme Drought
- D4 Exceptional Drought

*The Drought Monitor focuses on broad-scale conditions. Local conditions may vary. For more information on the Drought Monitor, go to <https://droughtmonitor.unl.edu/About.aspx>*

Author:

Richard Tinker  
CPC/NOAA/NWS/NCEP



Source: National Drought Mitigation Center, a partnership with USDA, U.S. Department of Commerce/NOAA, <http://droughtmonitor.unl.edu>.

## Texas Crop Progress and Condition (14 September 2020)

USDA, National Agricultural Statistics Service, Southern Plains Regional Field Office