



Texas Crop Progress and Condition

Southern Plains Regional Field Office
Post Office Box 70 Austin, Texas 78767
(800) 626-3142 · FAX (855) 270-2725 · www.nass.usda.gov/tx

Issue: TX-CW3620

Weekly Summary for Sep 21-Sep 27

Released: September 28, 2020

Most of Texas reported from trace amounts up to 3.0 inches of rain during the past week. Isolated areas of the Blacklands, East Texas, South Central Texas and the Lower Valley received from 4.0 to 8.0 inches, while very isolated areas of the Upper Coast received from 10.0 to 20.0 inches of rain for the week. There were 5.7 days suitable for fieldwork.

Small Grains: Some producers in the Cross Timbers and the Blacklands delayed seeding small grain crops in order to treat fields for army worms. Meanwhile, planting continued in areas of the Southern High and Low Plains, the Northern Low Plains, the Cross Timbers, the Blacklands, the Edwards Plateau, and South Texas. Small grain plantings made favorable progress within areas of the Edwards Plateau and the Southern Low Plains.

Row Crops: Corn harvest progressed in the Northern High Plains. Cotton harvest continued in areas of South Texas, South Central Texas, and the Edwards Plateau. Meanwhile, harvest would begin soon in other areas of the Southern High Plains and the Edwards Plateau. Wet weather delayed harvest in some areas of South Central Texas and the Blacklands. Dryland cotton in the Low Plains continued to struggle due to previous lack of moisture and recent cooler temperatures. Rainfall also slowed soybean harvest in areas of the Blacklands and the Upper Coast. Some producers in the Upper Coast assessed mold and shattering damage to their soybean crops after receiving heavy precipitation from Tropical Storm Beta. Peanut harvest was underway in areas of the Cross Timbers, while harvest would begin soon in South Texas.

Fruit, Vegetable and Specialty Crops: Pecans continued to progress and harvest should begin soon in areas of the Southern High Plains, the Trans-Pecos, and South Texas. In some areas of South Texas, melon producers readied fields for next season. Vegetable producers in the Lower Valley prepared fields for fall plantings.

Livestock, Range and Pasture: Supplemental feeding slowed in South Central Texas, while low level stock tanks were of concern. Feral hog control continued in areas of the Blacklands and North East Texas. Pasture and range condition were mostly rated good to fair.

Crop Progress

Stage	Percent of Acreage			
	Current Week	Previous Week	Previous Year	5 Year Average
Corn				
Mature	89	84	78	80
Harvested	70	69	70	68
Cotton				
Bolls Opening	60	53	67	56
Harvested	22	20	17	18
Peanuts				
Mature	34	30	24	23
Harvested	7	6	0	6
Sorghum				
Mature	90	88	90	82
Harvested	85	81	85	72
Soybeans				
Dropping Leaves	78	71	78	78
Harvested	55	50	63	55
Sunflowers				
Harvested	64	59	68	60
Winter Wheat				
Planted	31	18	31	32
Emerged	5	1	4	6

Crop Condition

Crop	Percent of Acreage					Index ¹	
	Excellent	Good	Fair	Poor	Very Poor	2020	2019
Corn	11	31	39	14	5	67	74
Cotton	5	22	38	19	16	54	60
Peanuts	1	40	42	12	5	66	77
Sorghum	13	32	33	14	8	67	82
Soybeans	4	65	29	2	0	81	61
Range and Pasture	5	25	41	21	8	58	46

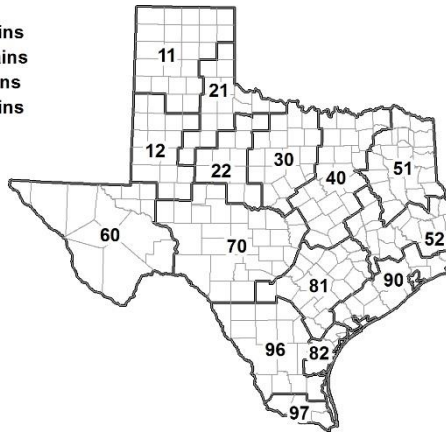
¹ The formula for the condition index is $I = (5V + 25P + 60F + 90G + 110E)/100$ where I = crop condition index and V, P, F, G, E = percentage of crop rated very poor, poor, fair, good, excellent.

Soil Moisture and Days Suitable by District

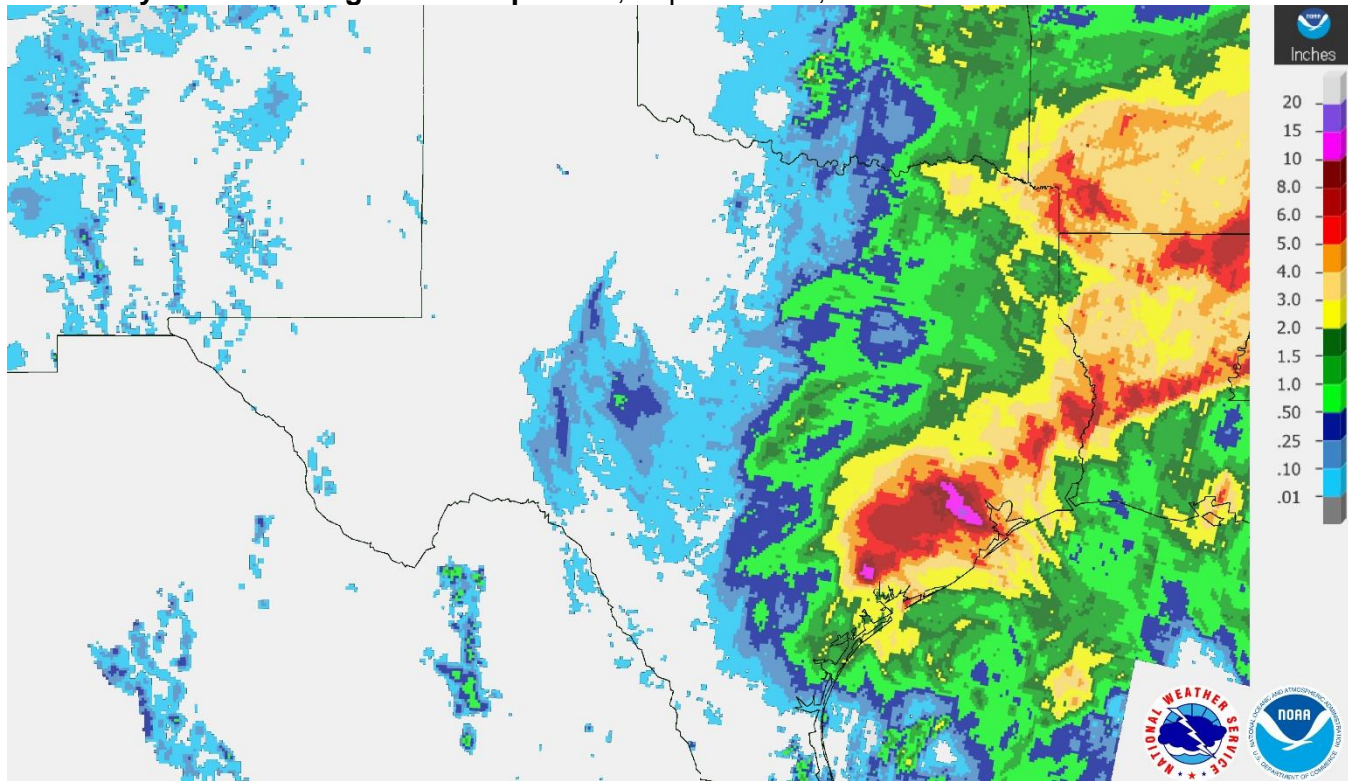
District	Topsoil Moisture Condition by District				Subsoil Moisture Condition by District				Days Suitable for Fieldwork
	Percentage of Acreage				Percentage of Acreage				
	Very Short	Short	Adequate	Surplus	Very Short	Short	Adequate	Surplus	
11	36	52	12	0	35	50	15	0	5.3
12	48	35	17	0	51	36	13	0	5.6
21	16	32	40	12	12	38	40	10	5.7
22	7	23	66	4	2	18	76	4	6.4
30	4	5	88	3	1	6	87	6	6.1
40	4	4	81	11	1	8	82	9	5.5
51	2	26	62	10	8	24	46	22	6.8
52	5	21	65	9	5	20	65	10	6.0
60	8	46	46	0	36	15	49	0	6.1
70	10	18	70	2	12	12	75	1	5.0
81	15	31	53	1	20	36	43	1	6.4
82	0	22	63	15	5	16	63	16	4.7
90	9	24	57	10	10	36	50	4	4.5
96	3	31	61	5	3	46	44	7	4.6
97	2	23	70	5	2	7	77	14	7.0
State	20	29	47	4	21	29	45	5	5.7

Texas Agricultural Districts

- 11 Northern High Plains
- 12 Southern High Plains
- 21 Northern Low Plains
- 22 Southern Low Plains
- 30 Cross Timbers
- 40 Blacklands
- 51 North East
- 52 South East
- 60 Trans-Pecos
- 70 Edwards Plateau
- 81 South Central
- 82 Coastal Bend
- 90 Upper Coast
- 96 South
- 97 Lower Valley

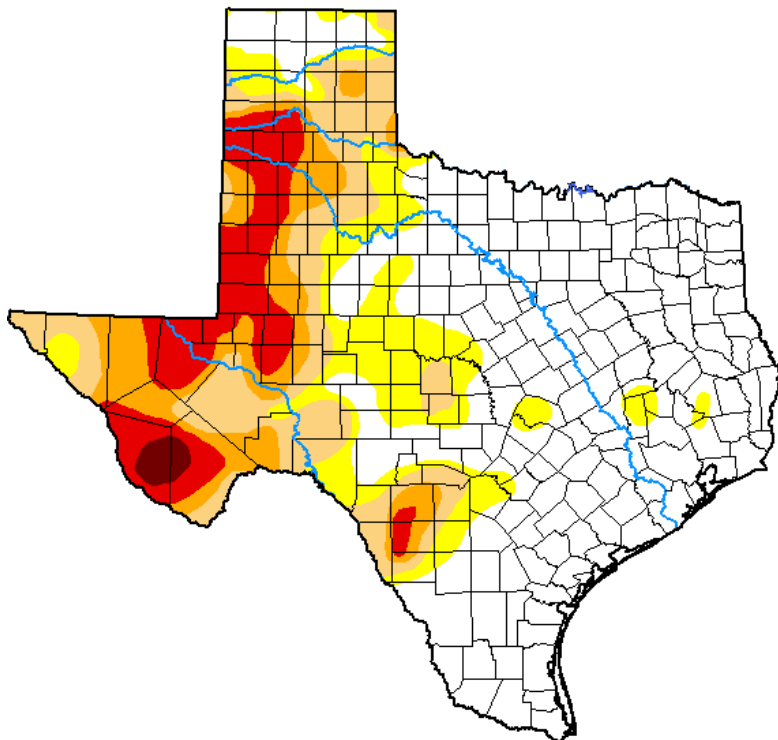


Seven Day Observed Regional Precipitation, September 27, 2020.



Source: National Weather Service, www.nws.noaa.gov.

Drought Monitor, Valid September 22, 2020.



Drought Conditions (Percent Area)

	None	D0-D4	D1-D4	D2-D4	D3-D4	D4
Current	54.63	45.37	31.88	18.89	9.88	0.78
Last Week 09-15-2020	48.79	51.21	34.16	21.74	9.88	0.78
3 Months Ago 06-23-2020	47.22	52.78	24.82	9.17	1.38	0.00
Start of Calendar Year 12-31-2019	44.69	55.31	36.12	9.19	0.74	0.00
Start of Water Year 10-01-2019	31.74	68.26	46.05	22.33	6.32	0.00
One Year Ago 09-24-2019	34.78	65.22	48.33	19.69	3.50	0.00

Intensity:

- None
- D0 Abnormally Dry
- D1 Moderate Drought
- D2 Severe Drought
- D3 Extreme Drought
- D4 Exceptional Drought

The Drought Monitor focuses on broad-scale conditions. Local conditions may vary. For more information on the Drought Monitor, go to <https://droughtmonitor.unl.edu/About.aspx>

Author:

Brad Rippey
U.S. Department of Agriculture



Source: National Drought Mitigation Center, a partnership with USDA, U.S. Department of Commerce/NOAA, <http://droughtmonitor.unl.edu>.

Texas Crop Progress and Condition (28 September 2020)

USDA, National Agricultural Statistics Service, Southern Plains Regional Field Office