



Texas Crop Progress and Condition

Southern Plains Regional Field Office
Post Office Box 70 Austin, Texas 78767
(800) 626-3142 · FAX (855) 270-2725 · www.nass.usda.gov/tx

Issue: TX-CW3720

Weekly Summary for September 28-October 4

Released: October 5, 2020

Most of Texas received from none to trace amounts of rain during the past week. Isolated areas of East Texas received from trace amounts up to 2.0 inches of rain. There were 6.0 days suitable for fieldwork.

Small Grains: Small grain plantings continued to progress in the High Plains, while irrigated winter wheat had begun to emerge in the Northern High Plains. Meanwhile, extreme winds and lack of rain delayed the progress of plantings in the Low Plains. Other areas of Texas, such as the Blacklands, the Cross Timbers, the Edwards Plateau, South Central Texas and South Texas, planting continued as conditions allowed. Some producers in the Upper Coast indicated they may postpone planting small grains until early November.

Row Crops: Corn harvest continued to progress in areas of the High Plains, while irrigated fields in the Cross Timbers also progressed. Some cotton producers in the Northern High Plains should begin harvest soon while others await field maturity. Meanwhile, in the Southern High Plains and Low Plains some cotton producers had begun harvesting. However, development of some cotton fields in the Southern Low Plains have not progressed well due to cooler temperatures. Cotton harvest neared completion in the Blacklands, South Texas, and the Edwards Plateau while progressing in the Trans-Pecos. Peanut crops neared maturity and producers should begin harvest soon in areas of the Southern High Plains and South Texas.

Fruit, Vegetable and Specialty Crops: Pecans continued to progress and harvest should begin soon in areas of the Southern High Plains, the Edwards Plateau, South Central Texas, the Trans-Pecos, and South Texas. In some areas of South Texas, strawberry producers readied fields for planting which should begin soon. Winter vegetable fields in areas of South Texas continued to progress.

Livestock, Range and Pasture: Supplemental feeding continued to slow in South Central Texas but continued in areas of South Texas. Stock tank levels were no longer a concern in areas of South Texas. Feral hog control continued in areas of North East Texas. Pasture and range condition were mostly rated good to fair

Crop Progress

Stage	Percent of Acreage			
	Current Week	Previous Week	Previous Year	5 Year Average
Corn				
Mature	92	89	83	86
Harvested	78	70	73	72
Cotton				
Bolls Opening	83	60	75	66
Harvested	26	22	23	22
Peanuts				
Mature	40	34	31	30
Harvested	10	7	1	10
Sorghum				
Mature	92	90	92	85
Harvested	88	85	87	75
Soybeans				
Dropping Leaves	81	78	81	81
Harvested	60	55	69	61
Sunflowers				
Harvested	70	64	70	63
Winter Wheat				
Planted	44	31	45	43
Emerged	18	5	20	17

Crop Condition

Crop	Percent of Acreage					Index ¹	
	Excellent	Good	Fair	Poor	Very Poor	2020	2019
Corn	11	31	39	14	5	67	74
Cotton	6	19	36	23	16	52	61
Peanuts	1	35	40	13	11	60	79
Sorghum	13	32	33	14	8	67	82
Soybeans	4	65	29	2	0	81	61
Range and Pasture	7	26	41	19	7	61	45

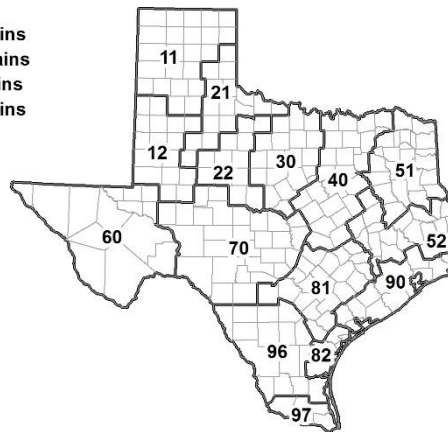
¹ The formula for the condition index is $I = (5V + 25P + 60F + 90G + 110E)/100$ where I = crop condition index and V, P, F, G, E = percentage of crop rated very poor, poor, fair, good, excellent.

Soil Moisture and Days Suitable by District

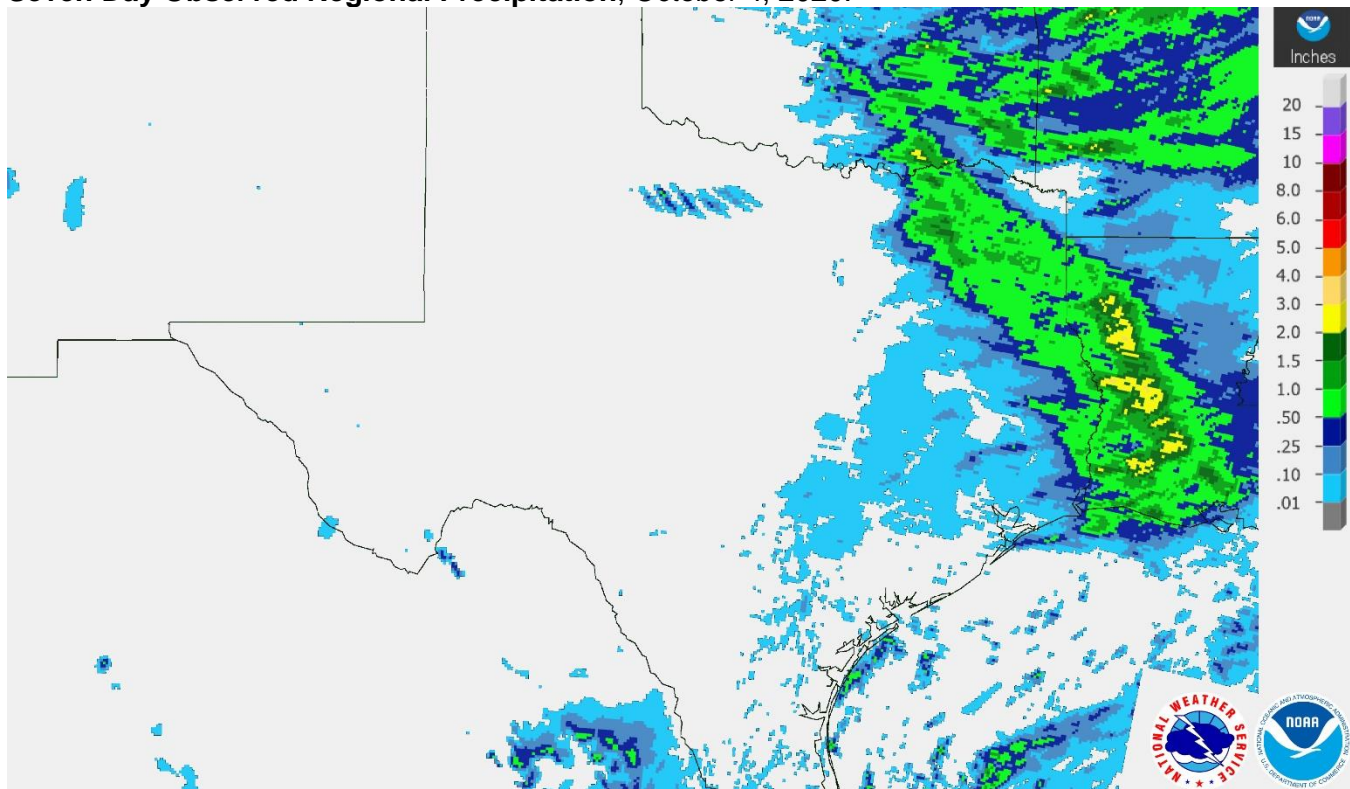
District	Topsoil Moisture Condition by District				Subsoil Moisture Condition by District				Days Suitable for Fieldwork
	Percentage of Acreage				Percentage of Acreage				
	Very Short	Short	Adequate	Surplus	Very Short	Short	Adequate	Surplus	
11	36	47	8	9	35	44	11	10	6.1
12	32	43	6	19	31	45	3	21	5.2
21	15	37	48	0	13	36	51	0	5.7
22	0	17	71	12	0	24	76	0	6.4
30	3	17	70	10	3	28	66	3	6.4
40	2	17	80	1	4	15	80	1	6.4
51	3	23	68	6	9	23	59	9	6.8
52	7	26	60	7	7	28	58	7	6.0
60	9	47	44	0	36	12	52	0	6.1
70	10	45	43	2	12	21	59	8	7.0
81	15	31	53	1	0	36	43	21	6.4
82	0	22	63	15	5	16	63	16	4.7
90	0	5	93	2	0	22	62	16	4.5
96	11	30	59	0	13	27	59	1	6.5
97	3	36	57	4	3	20	76	1	7.0
State	16	32	44	8	16	32	43	9	6.0

Texas Agricultural Districts

- 11 Northern High Plains
- 12 Southern High Plains
- 21 Northern Low Plains
- 22 Southern Low Plains
- 30 Cross Timbers
- 40 Blacklands
- 51 North East
- 52 South East
- 60 Trans-Pecos
- 70 Edwards Plateau
- 81 South Central
- 82 Coastal Bend
- 90 Upper Coast
- 96 South
- 97 Lower Valley

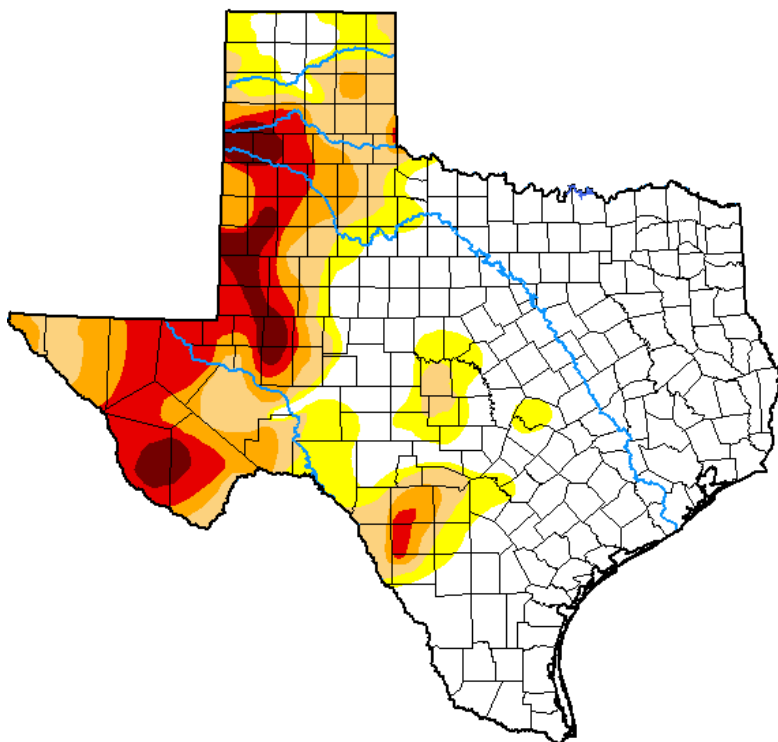


Seven Day Observed Regional Precipitation, October 4, 2020.



Source: National Weather Service, www.nws.noaa.gov.

Drought Monitor, Valid September 29, 2020.



Drought Conditions (Percent Area)

	None	D0-D4	D1-D4	D2-D4	D3-D4	D4
Current	57.35	42.65	31.96	20.91	12.02	3.29
Last Week <i>09-22-2020</i>	54.63	45.37	31.88	18.89	9.88	0.78
3 Months Ago <i>06-30-2020</i>	42.41	57.59	27.97	9.60	2.87	0.00
Start of Calendar Year <i>12-31-2019</i>	44.69	55.31	36.12	9.19	0.74	0.00
Start of Water Year <i>10-01-2019</i>	31.74	68.26	46.05	22.33	6.32	0.00
One Year Ago <i>10-01-2019</i>	31.74	68.26	46.05	22.33	6.32	0.00

Intensity:

- None
- D0 Abnormally Dry
- D1 Moderate Drought
- D2 Severe Drought
- D3 Extreme Drought
- D4 Exceptional Drought

The Drought Monitor focuses on broad-scale conditions. Local conditions may vary. For more information on the Drought Monitor, go to <https://droughtmonitor.unl.edu/About.aspx>

Author:

Brad Rippey
U.S. Department of Agriculture



Source: National Drought Mitigation Center, a partnership with USDA, U.S. Department of Commerce/NOAA, <http://droughtmonitor.unl.edu>.

Texas Crop Progress and Condition (October 2020)

USDA, National Agricultural Statistics Service, Southern Plains Regional Field Office