



Texas Crop Progress and Condition

Southern Plains Regional Field Office
Post Office Box 70 Austin, Texas 78767
(800) 626-3142 · FAX (855) 270-2725 · www.nass.usda.gov/tx

Issue: TX-CW4020

Weekly Summary for Oct 19-Oct 25

Released: October 26, 2020

Most of the state received from trace amounts up to 2.0 inches of rain. Isolated areas of the Upper Coast, the Cross Timbers, and the Blacklands received up to 3.0 inches of precipitation. There were 6.3 days suitable for fieldwork.

Small Grains: Winter wheat seeding continued in some areas of the High and Low Plains, but was paused in other areas due to a lack of moisture. Small grain seeding continued in the Blacklands, South Texas, and the Cross Timbers, while some producers in the Edwards Plateau were awaiting moisture in order to reseed small grain fields.

Row Crops: Cotton harvest was underway or set to begin soon in areas of the Plains, the Edwards Plateau, and the Trans-Pecos. Meanwhile, cotton harvest neared completion in the Blacklands, South East Texas, and the Cross Timbers. Peanut harvest continued in the Cross Timbers, South Texas, and the Southern High Plains. Row crop producers in some areas of the Upper Coast had begun to ready fields for next season.

Fruit, Vegetable and Specialty Crops: Citrus harvest and vegetable planting continued in areas of the Lower Valley. Meanwhile, pecan harvest was underway in some areas of the Cross Timbers, the Trans-Pecos, the Edwards Plateau, South Texas, and South Central Texas.

Livestock, Range and Pasture: Supplemental feeding continued in the Northern Low Plains, the Edwards Plateau, South Central Texas, and South Texas. Stock tank levels dropped in some areas of the Cross Timbers, the Blacklands and South Texas. Feral hog damage continued in areas of North East Texas. Pasture conditions were rated fair to poor.

Crop Progress

Stage	Percent of Acreage			
	Current Week	Previous Week	Previous Year	5 Year Average
Corn				
Harvested	89	85	84	83
Cotton				
Bolls Opening	94	92	92	89
Harvested	48	42	35	34
Peanuts				
Mature	54	50	58	53
Harvested	35	24	31	37
Soybeans				
Dropping Leaves	94	90	94	95
Harvested	79	76	78	80
Sunflowers				
Harvested	83	78	79	74
Winter Wheat				
Planted	71	64	72	70
Emergled	49	40	49	49
Oats				
Planted	72	65	81	74

Crop Condition

Crop	Percent of Acreage					Index ¹	
	Excellent	Good	Fair	Poor	Very Poor	2020	2019
Cotton	6	19	29	37	9	51	58
Peanuts	1	48	51	0	0	75	74
Sorghum	13	32	33	14	8	67	82
Soybeans	4	65	29	2	0	81	61
Range and Pasture	1	17	42	26	14	49	45

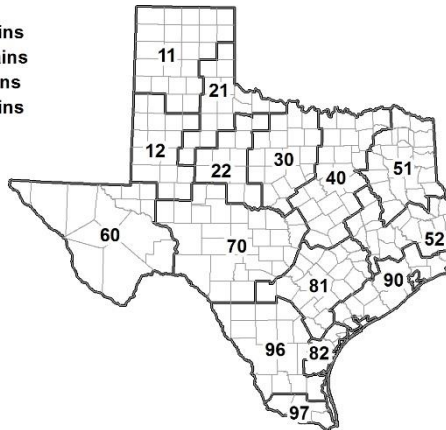
¹ The formula for the condition index is $I = (5V + 25P + 60F + 90G + 110E)/100$ where I = crop condition index and V, P, F, G, E = percentage of crop rated very poor, poor, fair, good, excellent.

Soil Moisture and Days Suitable by District

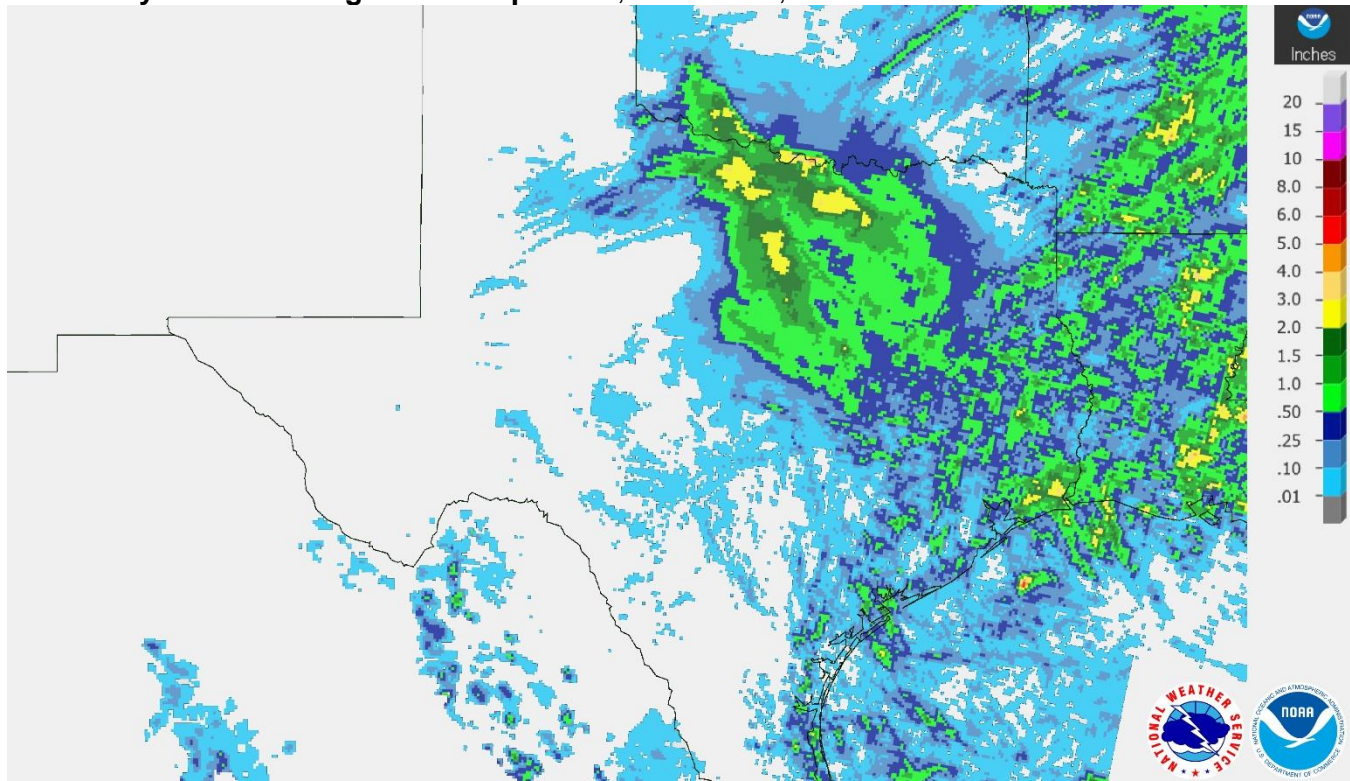
District	Topsoil Moisture Condition by District				Subsoil Moisture Condition by District				Days Suitable for Fieldwork
	Percentage of Acreage				Percentage of Acreage				
	Very Short	Short	Adequate	Surplus	Very Short	Short	Adequate	Surplus	
11	61	23	6	10	50	31	9	10	6.1
12	49	49	1	1	50	50	0	0	5.6
21	24	46	20	10	11	46	32	11	6.2
22	17	44	30	9	8	51	38	3	6.6
30	10	56	34	0	8	43	49	0	5.7
40	30	38	31	1	11	38	40	11	6.9
51	13	43	44	0	19	40	40	1	7.0
52	21	49	30	0	9	52	39	0	6.7
60	11	40	49	0	7	44	48	1	6.3
70	50	25	14	11	38	35	16	11	6.1
81	8	64	28	0	5	65	30	0	6.7
82	13	41	44	2	13	41	44	2	6.5
90	6	20	67	7	6	29	60	5	6.1
96	27	45	28	0	26	44	29	1	6.8
97	34	41	25	0	16	36	48	0	7.0
State	34	39	22	5	27	42	26	5	6.3

Texas Agricultural Districts

- 11 Northern High Plains
- 12 Southern High Plains
- 21 Northern Low Plains
- 22 Southern Low Plains
- 30 Cross Timbers
- 40 Blacklands
- 51 North East
- 52 South East
- 60 Trans-Pecos
- 70 Edwards Plateau
- 81 South Central
- 82 Coastal Bend
- 90 Upper Coast
- 96 South
- 97 Lower Valley

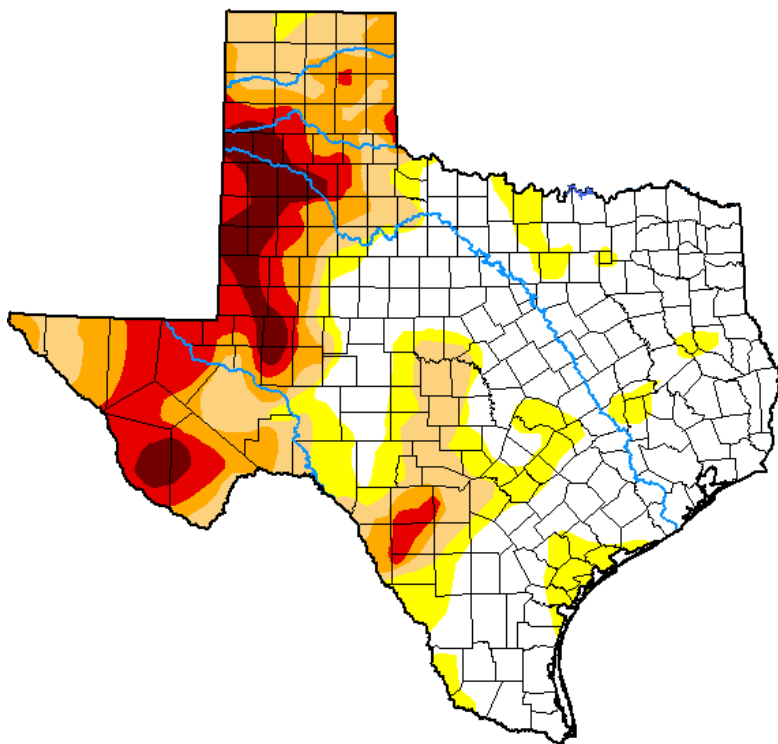


Seven Day Observed Regional Precipitation, October 25, 2020.



Source: National Weather Service, www.nws.noaa.gov

Drought Monitor, Valid October 20, 2020.



Drought Conditions (Percent Area)

	None	D0-D4	D1-D4	D2-D4	D3-D4	D4
Current	46.81	53.19	39.60	25.69	14.42	4.72
Last Week 10-13-2020	52.46	47.54	36.22	23.76	13.67	3.29
3 Months Ago 07-21-2020	33.96	66.04	36.44	13.88	2.84	0.00
Start of Calendar Year 12-31-2019	44.69	55.31	36.12	9.19	0.74	0.00
Start of Water Year 09-29-2020	57.35	42.65	31.96	20.91	12.02	3.29
One Year Ago 10-22-2019	39.30	60.70	48.74	25.85	6.68	0.00

Intensity:

- None
- D0 Abnormally Dry
- D1 Moderate Drought
- D2 Severe Drought
- D3 Extreme Drought
- D4 Exceptional Drought

The Drought Monitor focuses on broad-scale conditions. Local conditions may vary. For more information on the Drought Monitor, go to <https://droughtmonitor.unl.edu/About.aspx>

Author:

Curtis Riganti
National Drought Mitigation Center



Source: National Drought Mitigation Center, a partnership with USDA, U.S. Department of Commerce/NOAA, <http://droughtmonitor.unl.edu>.

Texas Crop Progress and Condition (26 October 2020)

USDA, National Agricultural Statistics Service, Southern Plains Regional Field Office