



Texas Crop Progress and Condition

Southern Plains Regional Field Office
Post Office Box 70 Austin, Texas 78767
(800) 626-3142 · FAX (855) 270-2725 · www.nass.usda.gov/tx

Issue: TX-CW4220 Weekly Summary for November 2-November 8 Released: November 9, 2020

Most of Texas received from very little to no rain during the past week. Very isolated areas of the Southern High Plains and South East Texas received trace amounts of precipitation. There were 5.0 days suitable for fieldwork.

Small Grains: Winter wheat seedings stalled in some areas of South Central Texas, the Edwards Plateau, South Texas, and the High Plains, where conditions were less than favorable. However, some winter wheat seedings continued to progress in areas of the Edwards Plateau, the Blacklands, the Cross Timbers, and the Low Plains, where conditions were more favorable. Development of emerging winter wheat continues to make favorable progress in some counties in the Northern High Plains and the Blacklands.

Row Crops: Cotton harvest continues to progress in areas of the High and Low Plains and the Edwards Plateau. However, some cotton producers in the Low Plains continued to assess potential crop loss and damage from the previous freeze which occurred last week. Peanut harvest continued in areas of the Southern High Plains, the Cross Timbers, and South Texas.

Fruit, Vegetable and Specialty Crops: Pecan producers in the Cross Timbers and the Edwards Plateau assessed the extent of possible freeze damage in some of their orchards. Pecan harvest continued in areas of South Central Texas, the Edwards Plateau, the Cross Timbers, and South Texas. Citrus harvest continued in the Lower Valley, while vegetable harvest also continued to make good progress.

Livestock, Range and Pasture: Supplemental feeding continued in the Northern High Plains, the Cross Timbers, the Blacklands, the Edwards Plateau, South Central Texas, the Upper Coast and South Texas. Stock tank levels continued to fall in some areas of South Texas and the Cross Timbers. Feral hogs continued to be a problem in areas of East Texas and the Blacklands. Pasture conditions were rated fair to poor.

Crop Progress

Stage	Percent of Acreage			
	Current Week	Previous Week	Previous Year	5 Year Average
Corn				
Harvested	95	92	91	92
Cotton				
Harvested	62	58	48	46
Peanuts				
Mature	71	68	69	71
Harvested	60	51	57	62
Soybeans				
Harvested	87	84	82	86
Sunflowers				
Harvested	88	86	84	83
Winter Wheat				
Planted	82	76	81	81
Emerged	65	57	66	67
Oats				
Planted	88	80	89	88
Emerged	66	(NA)	82	66

(NA) Not available.

Crop Condition

Crop	Percent of Acreage					Index ¹	
	Excellent	Good	Fair	Poor	Very Poor	2020	2019
Cotton	7	17	26	37	13	49	55
Peanuts	1	37	54	7	1	69	74
Sorghum	13	32	33	14	8	67	67
Soybeans	4	65	29	2	0	81	61

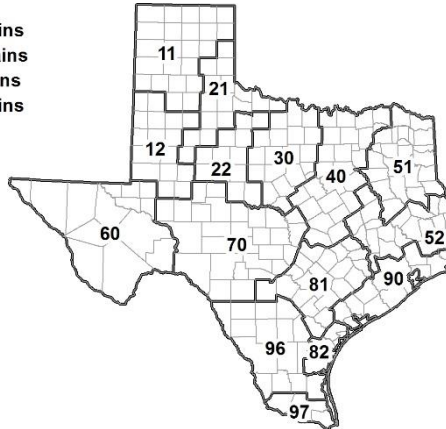
¹ The formula for the condition index is $I = (5V + 25P + 60F + 90G + 110E)/100$ where I = crop condition index and V, P, F, G, E = percentage of crop rated very poor, poor, fair, good, excellent.

Soil Moisture and Days Suitable by District

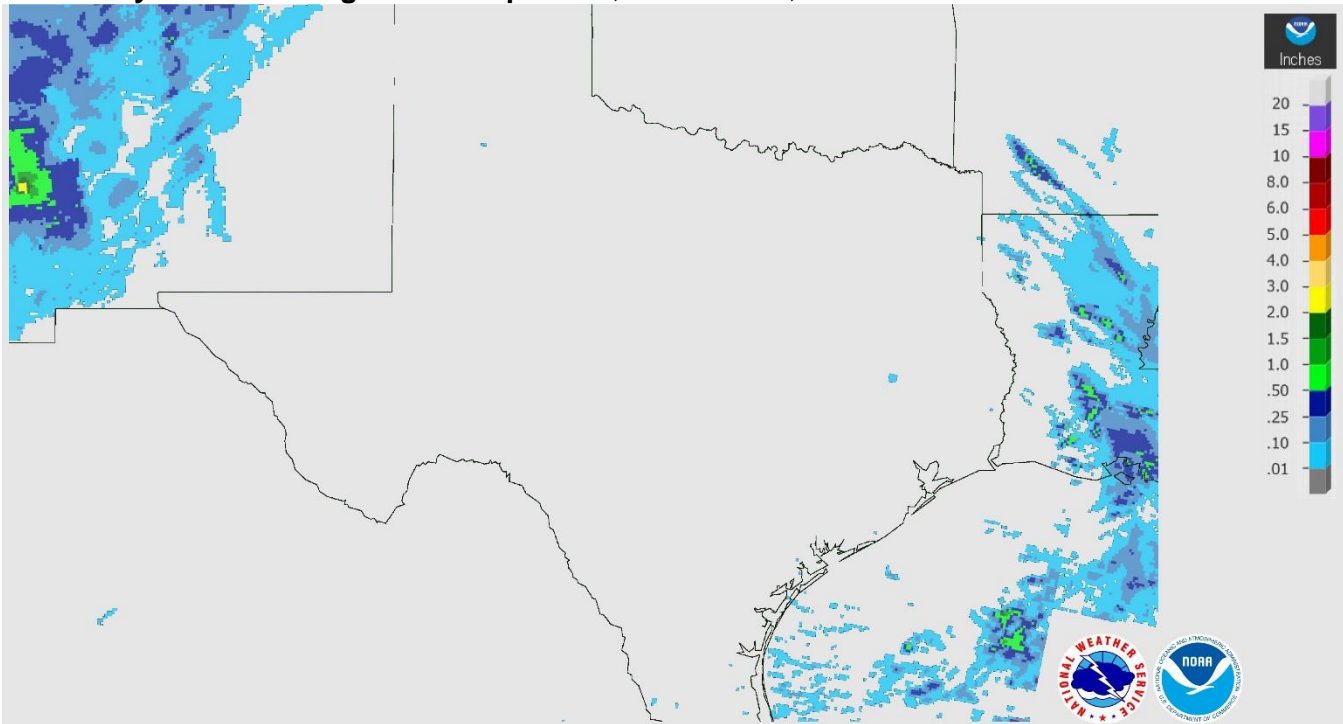
District	Topsoil Moisture Condition by District				Subsoil Moisture Condition by District				Days Suitable for Fieldwork
	Percentage of Acreage				Percentage of Acreage				
	Very Short	Short	Adequate	Surplus	Very Short	Short	Adequate	Surplus	
11	15	39	36	10	27	30	32	11	2.7
12	18	51	7	24	20	53	2	25	5.1
21	1	15	71	13	2	22	63	13	3.1
22	10	30	55	5	10	36	54	0	3.6
30	6	21	73	0	8	24	68	0	6.5
40	15	29	56	0	9	34	57	0	6.4
51	0	30	63	7	5	32	57	6	6.4
52	12	48	37	3	13	48	36	3	6.6
60	12	42	46	0	39	15	46	0	6.3
70	25	48	17	10	26	47	18	9	6.2
81	48	39	13	0	41	43	15	1	6.2
82	17	55	27	1	17	44	39	0	7.0
90	9	47	42	2	9	36	52	3	6.4
96	41	50	9	0	36	55	9	0	6.6
97	49	32	19	0	28	46	26	0	7.0
State	17	37	37	9	18	37	36	9	5.0

Texas Agricultural Districts

- 11 Northern High Plains
- 12 Southern High Plains
- 21 Northern Low Plains
- 22 Southern Low Plains
- 30 Cross Timbers
- 40 Blacklands
- 51 North East
- 52 South East
- 60 Trans-Pecos
- 70 Edwards Plateau
- 81 South Central
- 82 Coastal Bend
- 90 Upper Coast
- 96 South
- 97 Lower Valley

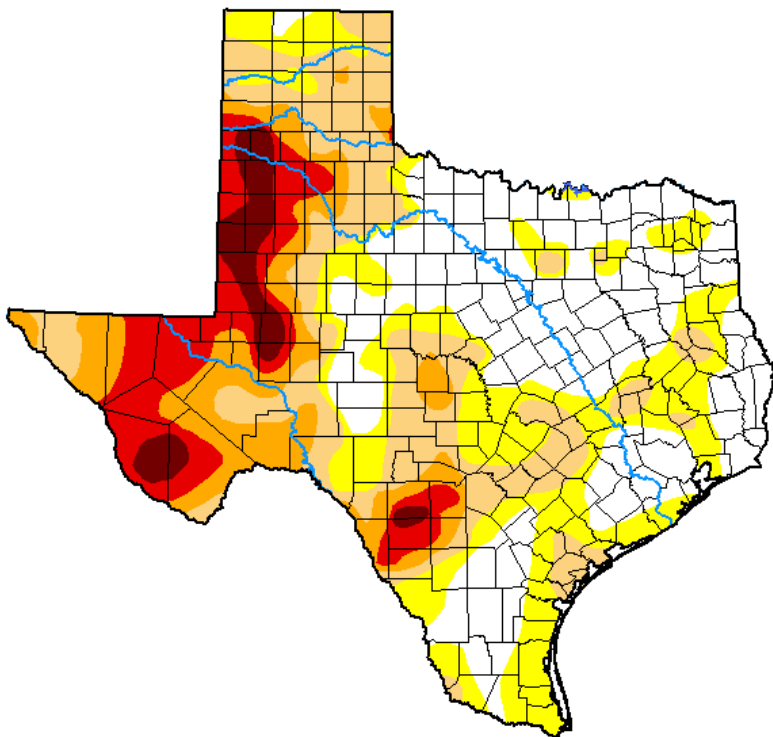


Seven Day Observed Regional Precipitation, November 8, 2020.



Source: National Weather Service, www.nws.noaa.gov.

Drought Monitor, Valid November 3, 2020.



Drought Conditions (Percent Area)

	None	D0-D4	D1-D4	D2-D4	D3-D4	D4
Current	32.17	67.83	45.52	25.00	13.54	3.93
Last Week 10-27-2020	37.98	62.02	42.98	28.28	14.42	4.72
3 Months Ago 08-04-2020	41.71	58.29	32.56	15.42	2.97	0.00
Start of Calendar Year 12-31-2019	44.69	55.31	36.12	9.19	0.74	0.00
Start of Water Year 09-29-2020	57.35	42.65	31.96	20.91	12.02	3.29
One Year Ago 11-05-2019	42.29	57.71	40.96	19.22	6.00	0.00

Intensity:

- None
- D0 Abnormally Dry
- D1 Moderate Drought
- D2 Severe Drought
- D3 Extreme Drought
- D4 Exceptional Drought

The Drought Monitor focuses on broad-scale conditions. Local conditions may vary. For more information on the Drought Monitor, go to <https://droughtmonitor.unl.edu/About.aspx>

Author:

David Miskus
NOAA/NWS/NCEP/CPC



Source: National Drought Mitigation Center, a partnership with USDA, U.S. Department of Commerce/NOAA, <http://droughtmonitor.unl.edu>.