



Texas Crop Progress and Condition

Southern Plains Regional Field Office
Post Office Box 70 Austin, Texas 78767
(800) 626-3142 · FAX (855) 270-2725 · www.nass.usda.gov/tx

Issue: TX-CW4320

Weekly Summary for November 9-15

Released: November 16, 2020

Most of Texas experienced dry conditions while some areas of the state received trace amounts of rain during the past week. There were 5.6 days suitable for fieldwork.

Small Grains: Winter wheat seeding continued in areas of the High and Low Plains, the Cross Timbers, the Blacklands, the Edwards Plateau, the Upper Coast and South Texas. Winter wheat and oat seeding stalled in some areas of South Central and North East Texas due to dry conditions. In some areas of the Blacklands, seeding slowed as producers waited for more favorable conditions, while other areas reported good emergence and favorable conditions.

Row Crops: Cotton harvest continued to progress in areas of the High and Low Plains, the Trans-Pecos, the Edwards Plateau, and North East Texas. Cotton producers in the Northern High Plains neared completion and expected to finalize harvest soon. Peanut harvest continued in areas of the Cross Timbers, South Texas, and the Southern High Plains.

Fruit, Vegetable and Specialty Crops: Pecan producers in some areas of the Cross Timbers, the Trans-Pecos, and South Texas continued harvesting their crops. Citrus harvest continued in the Lower Valley, while vegetable harvest neared completion in some areas. Meanwhile, some vegetable producers in areas of the Lower Valley irrigated and fertilized fields of greens.

Livestock, Range and Pasture: Supplemental feeding continued in most areas of the state. Stock tank levels continued to decline in some areas of the Cross Timbers, the Blacklands, the Northern Low Plains, South Texas, and South Central Texas. Feral hogs continued to be a problem in areas of East Texas and the Blacklands. Pasture conditions were rated fair to poor.

Crop Progress

Stage	Percent of Acreage			
	Current Week	Previous Week	Previous Year	5 Year Average
Cotton				
Harvested	68	62	54	52
Peanuts				
Mature	79	71	75	76
Harvested	67	60	67	75
Soybeans				
Harvested	92	87	87	89
Sunflowers				
Harvested	92	88	86	86
Winter Wheat				
Planted	86	82	84	85
Emerged	70	65	71	73
Oats				
Planted	91	88	93	92
Emerged	74	66	86	75

Crop Condition

Crop	Percent of Acreage					Index ¹	
	Excellent	Good	Fair	Poor	Very Poor	2020	2019
Cotton	6	16	31	34	13	49	55
Peanuts	4	40	51	4	1	72	74
Soybeans	4	65	29	2	0	81	61
Wheat	5	25	40	22	8	58	60

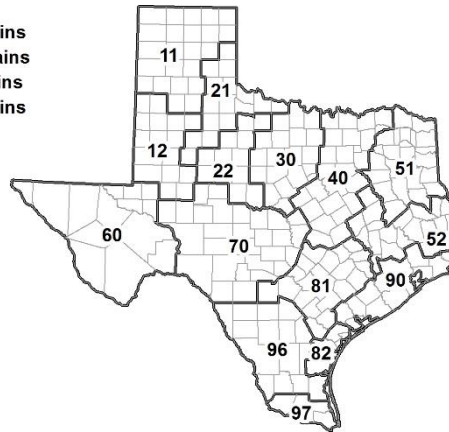
¹ The formula for the condition index is $I = (5V + 25P + 60F + 90G + 110E)/100$ where I = crop condition index and V, P, F, G, E = percentage of crop rated very poor, poor, fair, good, excellent.

Soil Moisture and Days Suitable by District

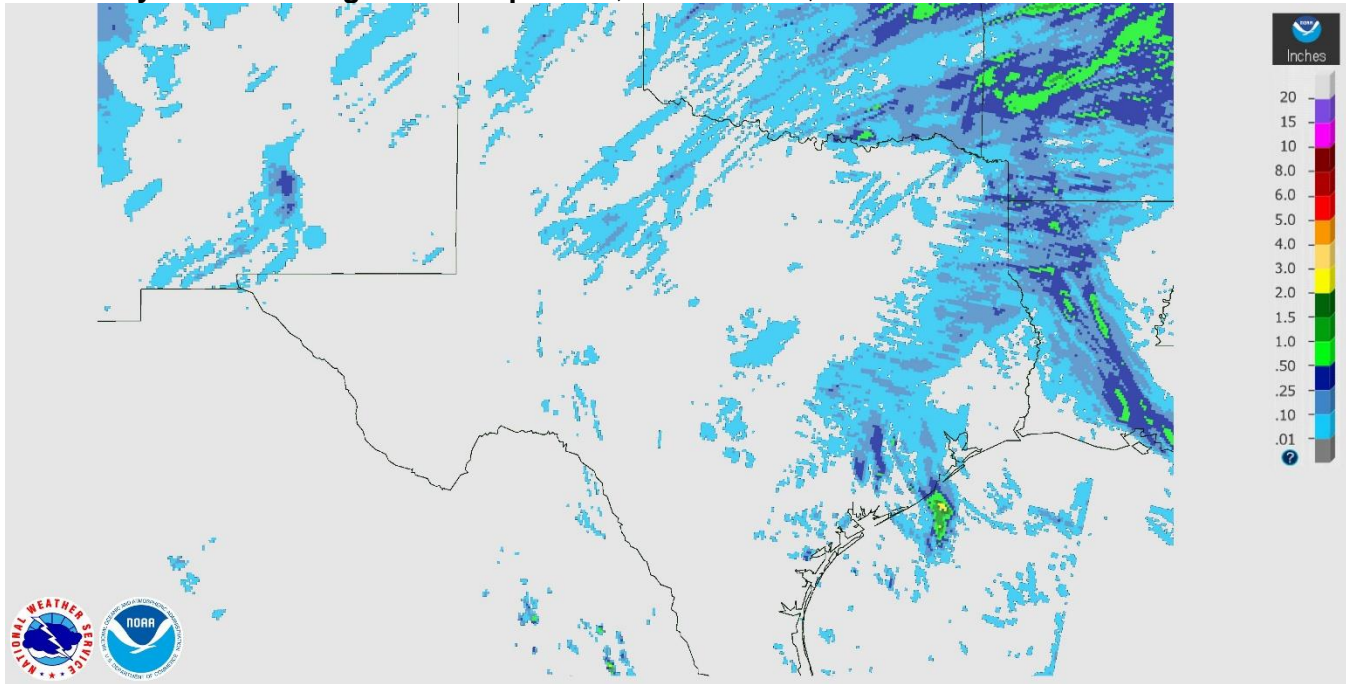
District	Topsoil Moisture Condition by District				Subsoil Moisture Condition by District				Days Suitable for Fieldwork
	Percentage of Acreage				Percentage of Acreage				
	Very Short	Short	Adequate	Surplus	Very Short	Short	Adequate	Surplus	
11	15	39	36	10	27	30	32	11	2.7
12	18	51	7	24	20	53	2	25	5.1
21	16	34	50	0	14	35	51	0	6.6
22	19	54	27	0	12	56	32	0	6.6
30	7	35	58	0	8	33	59	0	6.5
40	21	46	33	0	16	42	41	1	6.9
51	9	42	44	5	15	34	48	3	6.4
52	8	54	34	4	8	53	35	4	6.9
60	41	13	46	0	54	13	33	0	6.1
70	79	12	9	0	57	34	9	0	6.2
81	51	36	13	0	47	36	16	1	6.8
82	17	55	27	1	17	44	39	0	7.0
90	12	67	21	0	12	60	28	0	6.4
96	59	33	7	1	57	35	7	1	6.5
97	53	31	16	0	29	50	21	0	7.0
State	22	43	28	7	23	42	28	7	5.6

Texas Agricultural Districts

- 11 Northern High Plains
- 12 Southern High Plains
- 21 Northern Low Plains
- 22 Southern Low Plains
- 30 Cross Timbers
- 40 Blacklands
- 51 North East
- 52 South East
- 60 Trans-Pecos
- 70 Edwards Plateau
- 81 South Central
- 82 Coastal Bend
- 90 Upper Coast
- 96 South
- 97 Lower Valley

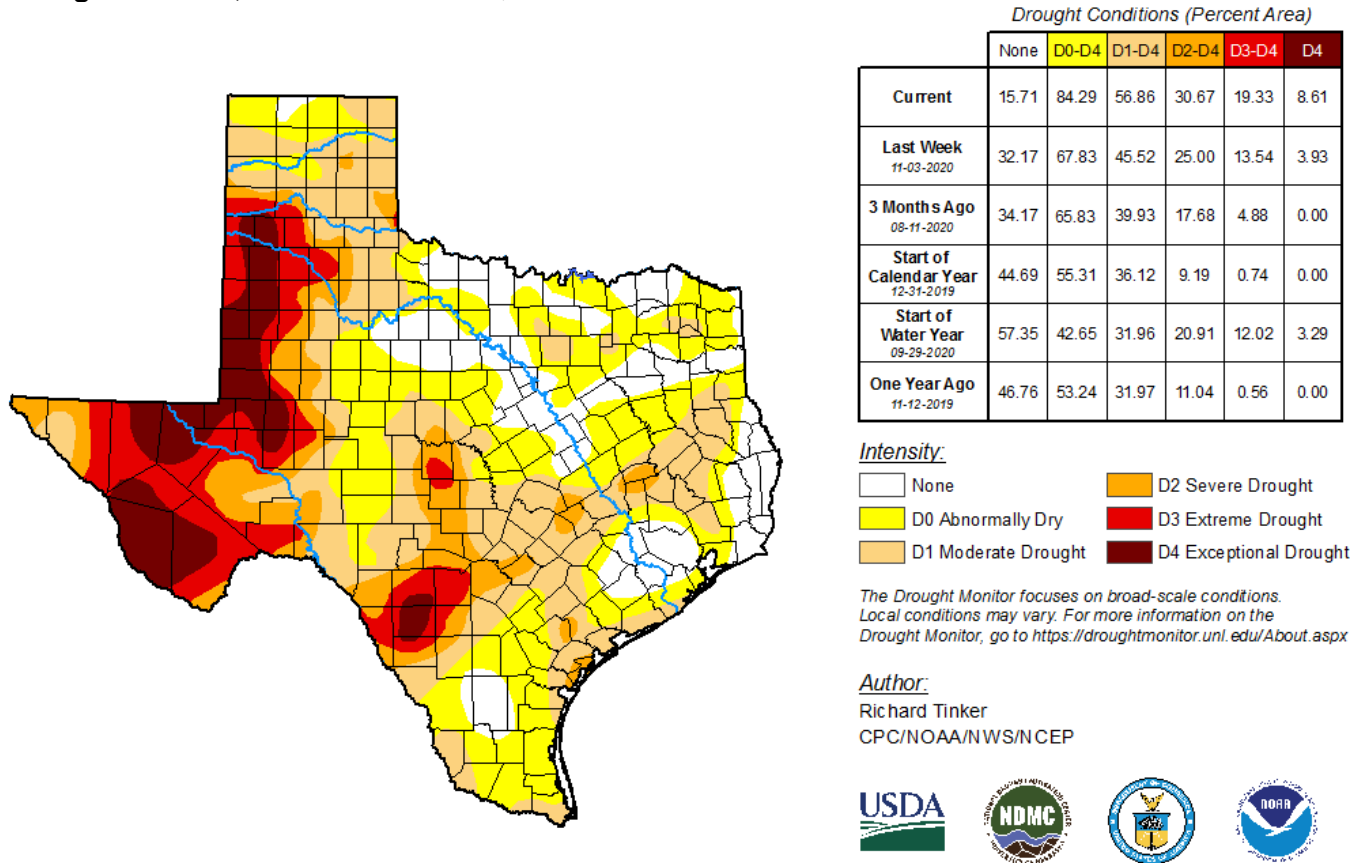


Seven Day Observed Regional Precipitation, November 15, 2020.



Source: National Weather Service, www.nws.noaa.gov.

Drought Monitor, Valid November 10, 2020.



Source: National Drought Mitigation Center, a partnership with USDA, U.S. Department of Commerce/NOAA, <http://droughtmonitor.unl.edu>.

Texas Crop Progress and Condition (16 November 2020)

USDA, National Agricultural Statistics Service, Southern Plains Regional Field Office