



# Texas Crop Progress and Condition

Southern Plains Regional Field Office  
Post Office Box 70 Austin, Texas 78767  
(800) 626-3142 · FAX (855) 270-2725 · [www.nass.usda.gov/tx](http://www.nass.usda.gov/tx)

**Issue: TX-CW4420**

**Weekly Summary for Nov 16 - Nov 22**

**Released: November 23, 2020**

Most of Texas experienced dry conditions while some areas of the state received trace amounts of rain during the past week, with a couple of isolated areas receiving up to 0.5 inches. There were 5.6 days suitable for fieldwork.

**Small Grains:** Winter wheat fields were in need of moisture in many areas of the state, as soil moisture continued to decline. Irrigated fields in the Northern High Plains continued to emerge and establish good stands.

**Row Crops:** Cotton harvest continued in areas of the Northern High Plains, the Low Plains, and the Edwards Plateau. High winds delayed harvest in areas of the Northern High Plains. Abandoned acres were being plowed under in areas of the Southern High Plains due to lingering dry conditions. Peanut harvest continued in South Texas and completion was expected soon.

**Fruit, Vegetable and Specialty Crops:** Pecan harvest continued in areas of the Southern High Plains, the Cross Timbers, the Trans-Pecos, the Edwards Plateau, South Central Texas, and South Texas. Some pecan producers in the Trans-Pecos had harvested Pawnee varieties but awaited cooler weather in order to harvest Schely varieties. Citrus continued to mature with some varieties nearing harvest in areas of the Lower Valley while in other areas of the district harvest had begun. Sugarcane fields were harvested and burned in the Lower Valley.

**Livestock, Range and Pasture:** Supplemental feeding continued in most areas of the state. Stock tank levels continued to decline in some areas of the Cross Timbers, the Blacklands, and South Texas. Feral hogs continued to be a problem in areas of North East Texas and the Cross Timbers. Pasture conditions were rated fair to poor.

### Crop Progress

Stage	Percent of Acreage			
	Current Week	Previous Week	Previous Year	5 Year Average
Cotton				
Harvested	74	68	65	60
Peanuts				
Mature	89	79	82	83
Harvested	82	67	76	82
Soybeans				
Harvested	96	92	89	92
Sunflowers				
Harvested	95	92	89	88
Winter Wheat				
Planted	92	86	86	88
Oats				
Planted	95	91	95	94
Emerged	80	74	89	79

### Crop Condition

Crop	Percent of Acreage					Index <sup>1</sup>	
	Excellent	Good	Fair	Poor	Very Poor	2020	2019
Cotton	5	16	33	25	21	47	55
Peanuts	1	37	59	2	1	70	74
Soybeans	4	65	29	2	0	81	61

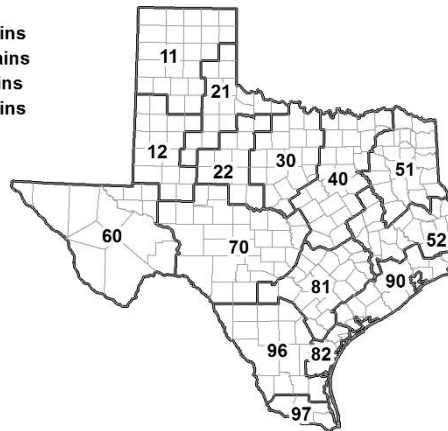
<sup>1</sup> The formula for the condition index is  $I = (5V + 25P + 60F + 90G + 110E)/100$  where I = crop condition index and V, P, F, G, E = percentage of crop rated very poor, poor, fair, good, excellent.

### Soil Moisture and Days Suitable by District

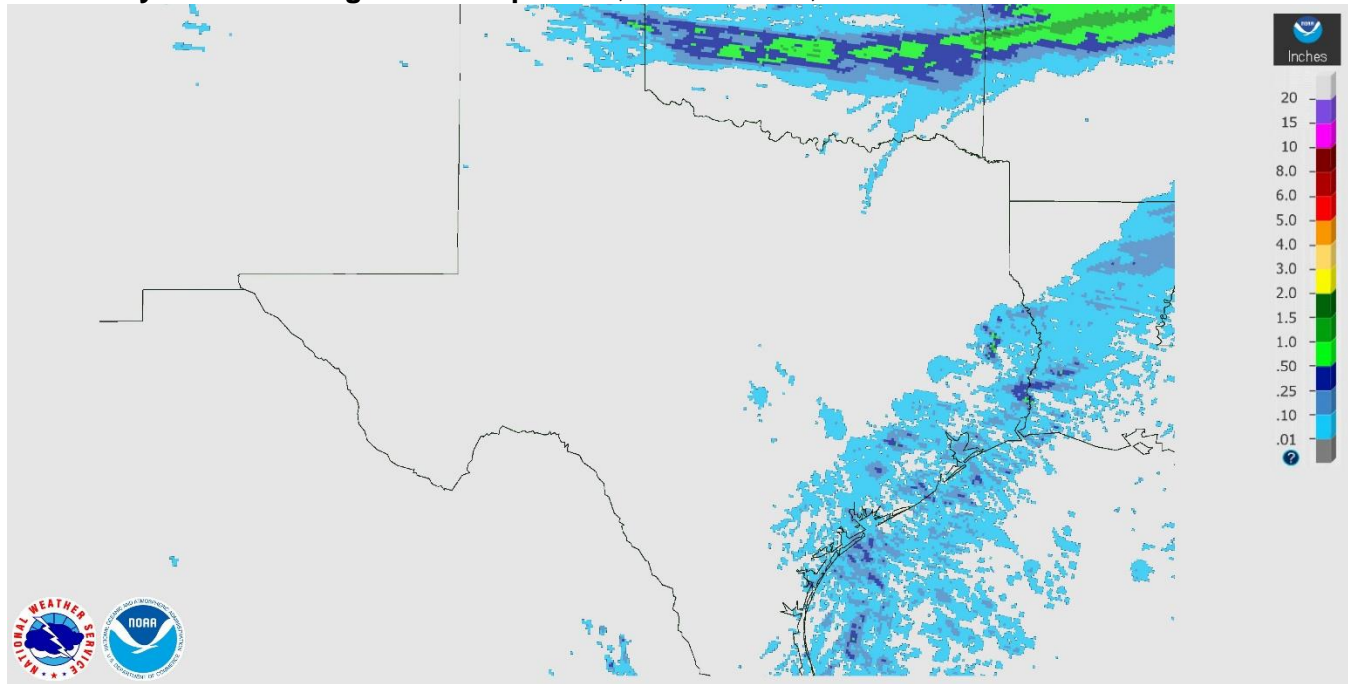
District	Topsoil Moisture Condition by District				Subsoil Moisture Condition by District				Days Suitable for Fieldwork
	Percentage of Acreage				Percentage of Acreage				
	Very Short	Short	Adequate	Surplus	Very Short	Short	Adequate	Surplus	
11	15	39	36	10	27	30	32	11	2.7
12	18	51	7	24	20	53	2	25	5.1
21	16	34	50	0	14	35	51	0	6.6
22	26	60	14	0	12	64	24	0	6.6
30	9	55	36	0	10	51	39	0	6.5
40	28	44	28	0	20	49	31	0	6.9
51	9	42	44	5	15	34	48	3	6.4
52	25	57	18	0	22	58	20	0	6.9
60	41	13	46	0	54	13	33	0	6.1
70	76	15	9	0	48	42	10	0	6.2
81	51	36	9	4	56	29	15	0	6.8
82	22	60	18	0	22	51	27	0	7.0
90	11	75	14	0	7	66	27	0	6.4
96	68	26	6	0	67	27	5	1	6.7
97	63	22	15	0	37	47	16	0	7.0
State	25	44	24	7	24	44	25	7	5.6

### Texas Agricultural Districts

- 11 Northern High Plains
- 12 Southern High Plains
- 21 Northern Low Plains
- 22 Southern Low Plains
- 30 Cross Timbers
- 40 Blacklands
- 51 North East
- 52 South East
- 60 Trans-Pecos
- 70 Edwards Plateau
- 81 South Central
- 82 Coastal Bend
- 90 Upper Coast
- 96 South
- 97 Lower Valley

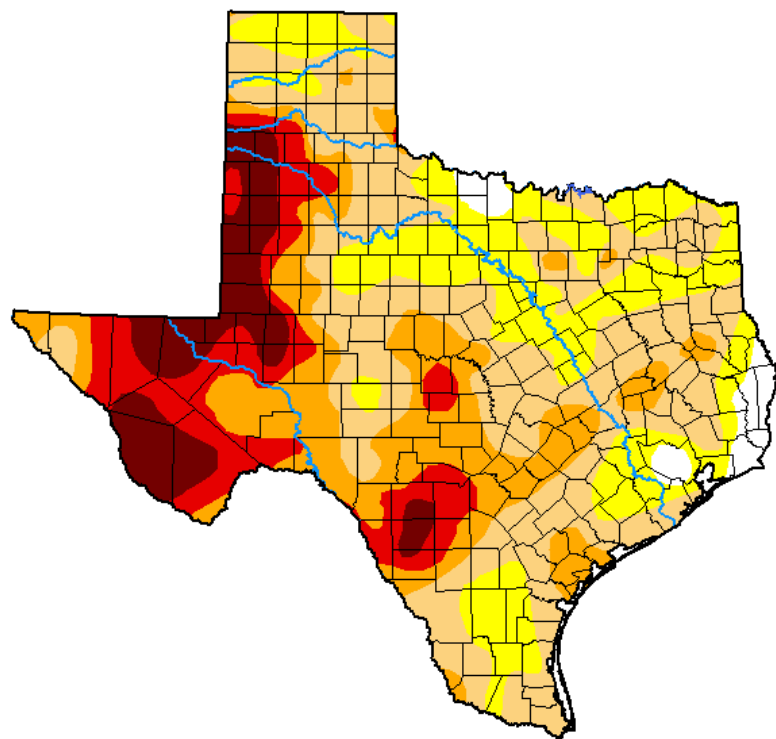


**Seven Day Observed Regional Precipitation, November 22, 2020.**



Source: National Weather Service, [www.nws.noaa.gov](http://www.nws.noaa.gov).

**Drought Monitor, Valid November 17, 2020.**



*Drought Conditions (Percent Area)*

	None	D0-D4	D1-D4	D2-D4	D3-D4	D4
<b>Current</b>	2.81	97.19	75.44	39.79	20.50	9.10
<b>Last Week</b> <i>11-10-2020</i>	15.71	84.29	56.86	30.67	19.33	8.61
<b>3 Months Ago</b> <i>08-18-2020</i>	36.20	63.80	47.63	23.91	7.81	0.33
<b>Start of Calendar Year</b> <i>12-31-2019</i>	44.69	55.31	36.12	9.19	0.74	0.00
<b>Start of Water Year</b> <i>09-29-2020</i>	57.35	42.65	31.96	20.91	12.02	3.29
<b>One Year Ago</b> <i>11-19-2019</i>	47.81	52.19	31.96	10.46	0.53	0.00

Intensity:

- None
- D0 Abnormally Dry
- D1 Moderate Drought
- D2 Severe Drought
- D3 Extreme Drought
- D4 Exceptional Drought

*The Drought Monitor focuses on broad-scale conditions. Local conditions may vary. For more information on the Drought Monitor, go to <https://droughtmonitor.unl.edu/About.aspx>*

Author:

Richard Tinker  
CPC/NOAA/NWS/NCEP



Source: National Drought Mitigation Center, a partnership with USDA, U.S. Department of Commerce/NOAA, <http://droughtmonitor.unl.edu>.