



Texas Crop Progress and Condition

Southern Plains Regional Field Office
Post Office Box 70 Austin, Texas 78767
(800) 626-3142 · FAX (855) 270-2725 · www.nass.usda.gov/tx

Issue: TX-CW4520

Weekly Summary for November 23 - November 29

Released: November 30, 2020

Note: This is the final weekly Crop Progress and Condition report for the 2020 season.

Most of the state received from trace amounts up to 3.0 inches of rain during the past week. Isolated areas of East Texas, the Upper Coast, South Central Texas, and the Coastal Bend received from 4.0 inches up to 8.0 inches of rain last week. There were 5.7 days suitable for fieldwork.

Small Grains: Winter wheat seeding continued in areas of the High Plains, the Cross Timbers and the Upper Coast. Winter wheat fields were in need of moisture in many areas of the state, as soil moisture continued to decline. Some emerged small grains in the Blacklands and Southern Low Plains continued to progress.

Row Crops: Cotton harvest neared completion in areas of the Northern High Plains and the Edwards Plateau. Disastered cotton fields were being shredded in some areas of the Low Plains. An early freeze appeared to have caused lower than expected yields in areas of the Southern Low Plains. Corn and sorghum residue was being plowed in areas of the Blacklands.

Fruit, Vegetable and Specialty Crops: Pecan harvest continued in areas of the Edwards Plateau and South Central Texas while harvest neared completion in areas of the Cross Timbers. Citrus and sugarcane harvest continued while winter vegetables progressed in areas of the Lower Valley.

Livestock, Range and Pasture: Supplemental feeding continued in most areas of the state. Stock tank levels continued to decline in some areas of the Cross Timbers, the Blacklands, and South Texas. Feral hogs continued to be a problem in areas of North East Texas. Pasture conditions were rated fair to poor.

Crop Progress

Stage	Percent of Acreage			
	Current Week	Previous Week	Previous Year	5 Year Average
Cotton				
Harvested	82	74	72	68
Peanuts				
Mature	96	89	96	88
Harvested	90	82	90	91
Winter Wheat				
Planted	95	92	90	91
Emerged	80	77	78	80
Oats				
Emerged	87	80	94	82

Crop Condition

Crop	Percent of Acreage					Index ¹	
	Excellent	Good	Fair	Poor	Very Poor	2020	2019
Cotton	5	16	33	25	21	47	55
Peanuts	1	37	59	2	1	70	74
Wheat	10	22	34	24	10	58	58
Oats	9	19	38	9	25	53	64
Range and Pasture	1	15	38	28	18	45	--

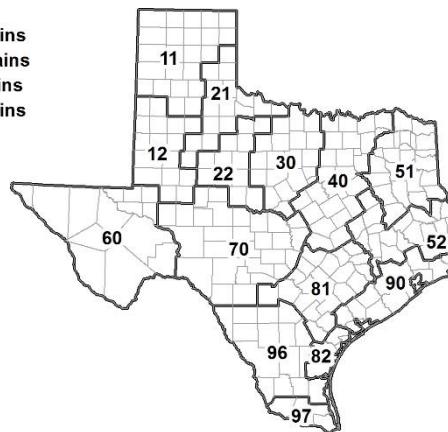
¹ The formula for the condition index is $I = (5V + 25P + 60F + 90G + 110E)/100$ where I = crop condition index and V, P, F, G, E = percentage of crop rated very poor, poor, fair, good, excellent.

Soil Moisture and Days Suitable by District

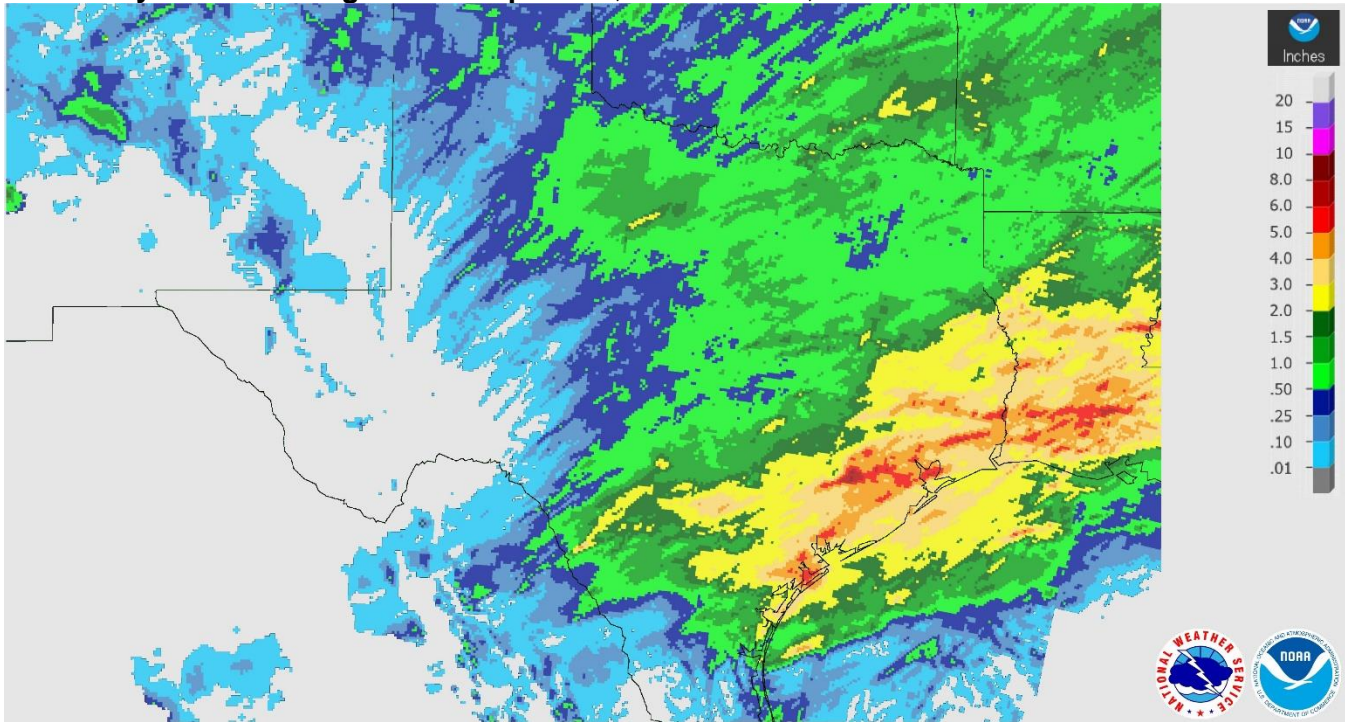
District	Topsoil Moisture Condition by District				Subsoil Moisture Condition by District				Days Suitable for Fieldwork
	Percentage of Acreage				Percentage of Acreage				
	Very Short	Short	Adequate	Surplus	Very Short	Short	Adequate	Surplus	
11	21	53	15	11	24	36	28	12	5.2
12	18	51	7	24	20	53	2	25	5.1
21	16	34	50	0	14	35	51	0	6.6
22	26	60	14	0	12	64	24	0	6.6
30	8	38	54	0	11	34	55	0	5.6
40	16	24	47	13	13	45	32	10	5.4
51	11	43	45	1	17	46	37	0	6.4
52	8	38	47	7	6	43	43	8	6.9
60	42	18	40	0	40	20	40	0	6.1
70	46	20	21	13	27	40	21	12	6.2
81	20	37	43	0	39	26	35	0	6.8
82	22	60	18	0	22	51	27	0	7.0
90	7	11	42	40	7	37	31	25	4.3
96	48	17	35	0	58	27	15	0	6.7
97	65	21	14	0	41	44	15	0	7.0
State	21	40	28	11	20	43	27	10	5.7

Texas Agricultural Districts

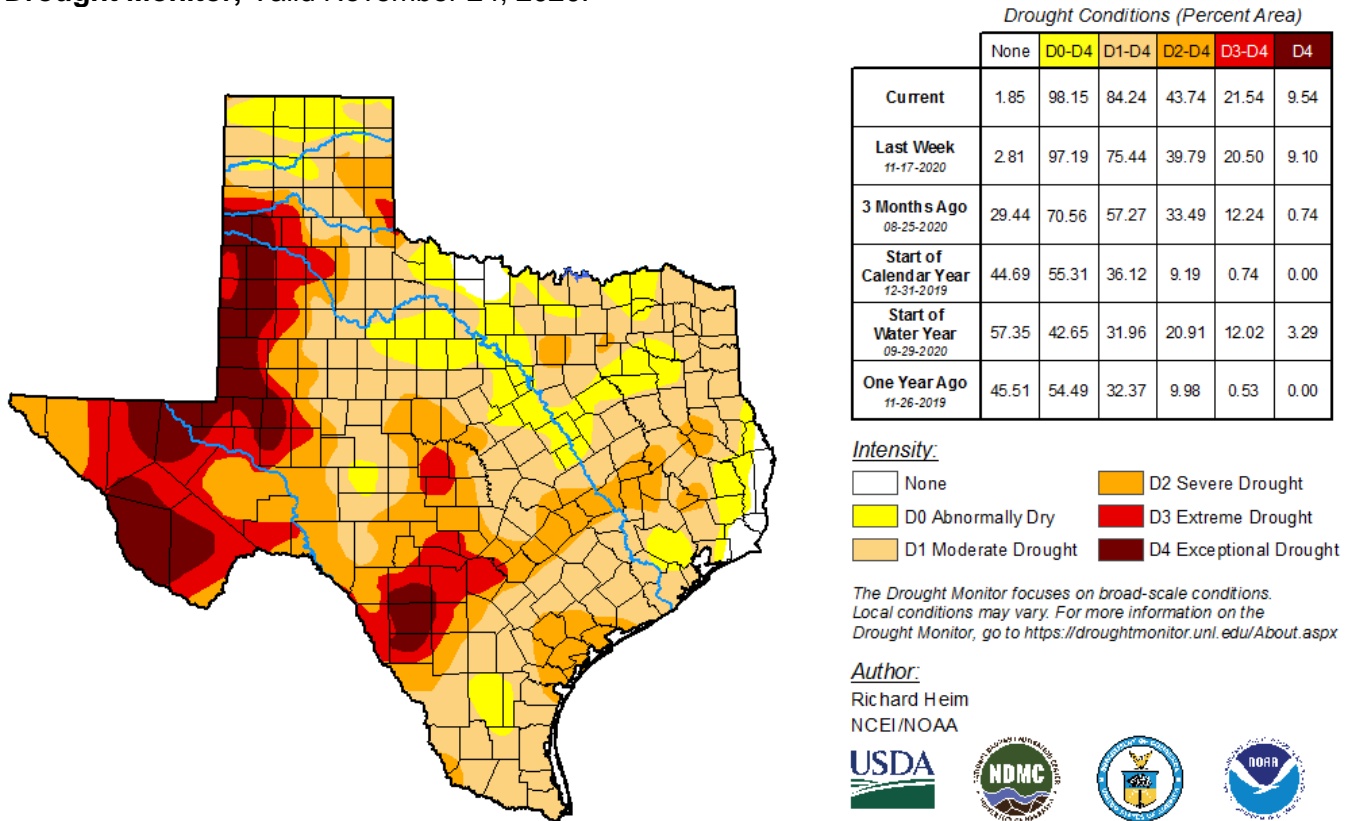
- 11 Northern High Plains
- 12 Southern High Plains
- 21 Northern Low Plains
- 22 Southern Low Plains
- 30 Cross Timbers
- 40 Blacklands
- 51 North East
- 52 South East
- 60 Trans-Pecos
- 70 Edwards Plateau
- 81 South Central
- 82 Coastal Bend
- 90 Upper Coast
- 96 South
- 97 Lower Valley



Seven Day Observed Regional Precipitation, November 29, 2020.



Drought Monitor, Valid November 24, 2020.



Source: National Drought Mitigation Center, a partnership with USDA, U.S. Department of Commerce/NOAA, <http://droughtmonitor.unl.edu>.