



Texas Crop Progress and Condition

Southern Plains Regional Field Office
Post Office Box 70 Austin, Texas 78767
(800) 626-3142 · FAX (855) 270-2725 · www.nass.usda.gov/tx

Issue: TX-CW0121 corrected Weekly Summary for January 18- 24 Released: January 26, 2021

Most of the state received from trace amounts to upwards of 1.5 inches of precipitation with isolated areas of North East Texas receiving up to 3.0 inches. There were 4.9 days suitable for fieldwork.

Small Grains: Small grain crops progressed well following recent fertilizer applications and rainfall in areas of the Blacklands. Meanwhile, small grains struggled throughout much of the state due to a lack of moisture. Winter wheat progress had slowed by cold weather in areas of the Edwards Plateau. Winter wheat and oat seedings continued in some areas of South Texas.

Row Crops: Cotton producers in some areas of the Lower Valley and the Upper Coast prepared fields for the upcoming season. Corn and sorghum fields were being prepared for planting in areas of the Lower Valley and South Central Texas. Row crop producers delayed herbicide and fertilizer application in some areas of the Upper Coast due to excess moisture.

Fruit, Vegetable and Specialty Crops: Pecan harvest continued in areas of the Cross Timbers. Potato producers readied their fields for planting in North East Texas.

Livestock, Range and Pasture: Supplemental feeding continued across most of the state. Stock tank levels in the Cross Timbers and the Blacklands had begun to decline. North East Texas, the Cross Timbers, and the Blacklands reported feral hog damage. Pasture and range condition was rated poor to fair, though pasture conditions varied greatly across the state.

Crop Progress

Stage	Percent of Acreage			
	Current Week	Previous Week	Previous Year	5 Year Average
Cotton				
Harvested	95	(NA)	95	95
Winter Wheat				
Emerged	92	(NA)	92	93
Oats				
Emerged	96	(NA)	96	96

(NA) Not available.

Crop Condition

Crop	Percent of Acreage					Index ¹	
	Excellent	Good	Fair	Poor	Very Poor	2021	2020
Wheat	0	20	39	29	12	49	50
Oats	5	19	35	26	15	51	55
Range and Pasture	2	12	36	30	20	43	53

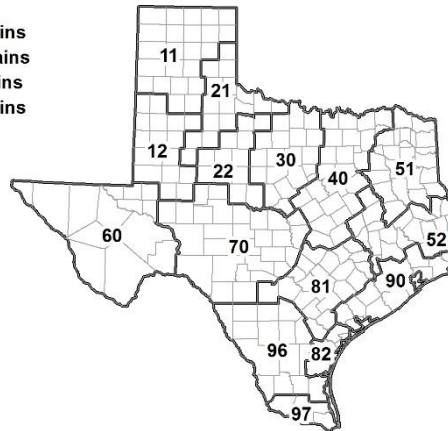
¹ The formula for the condition index is $I = (5V + 25P + 60F + 90G + 110E)/100$ where I = crop condition index and V, P, F, G, E = percentage of crop rated very poor, poor, fair, good, excellent.

Soil Moisture and Days Suitable by District

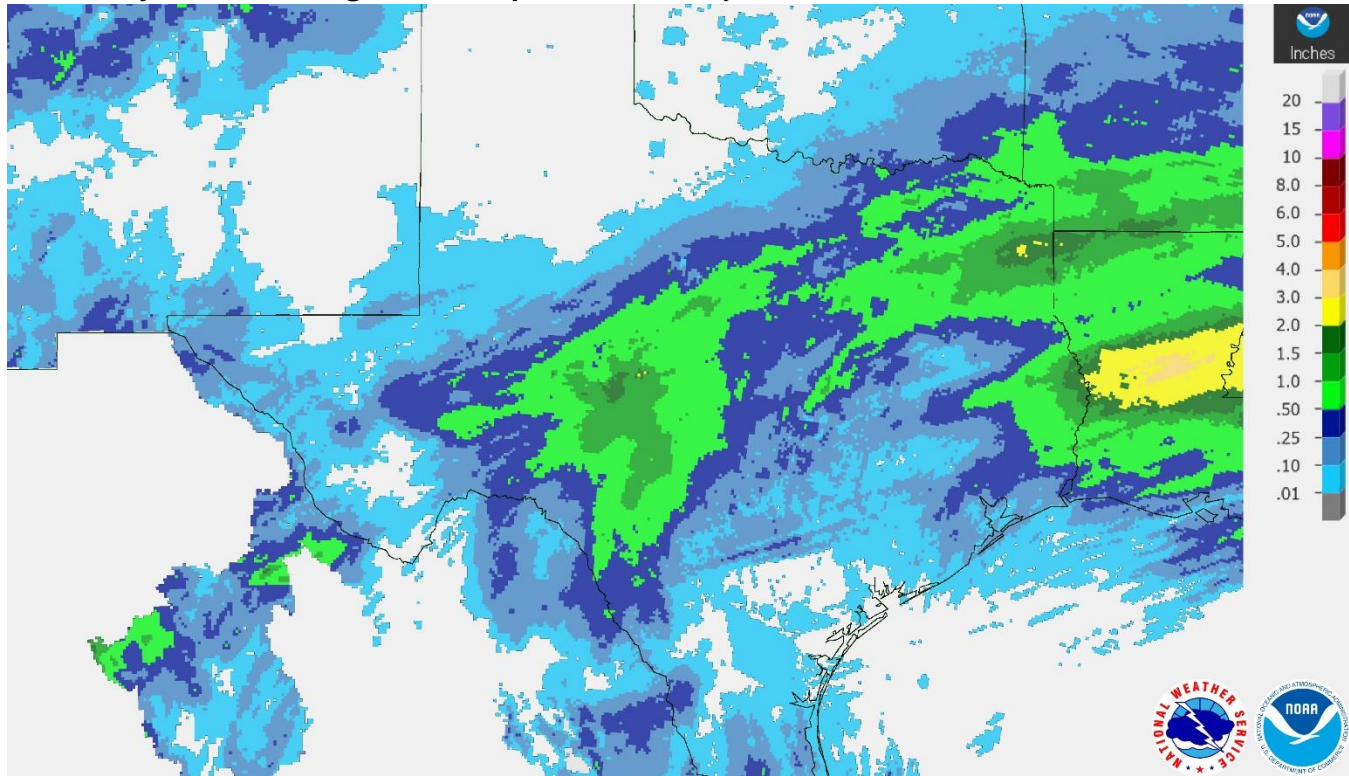
District	Topsoil Moisture Condition by District				Subsoil Moisture Condition by District				Days Suitable for Fieldwork
	Percentage of Acreage				Percentage of Acreage				
	Very Short	Short	Adequate	Surplus	Very Short	Short	Adequate	Surplus	
11	56	40	4	0	53	27	20	0	6.3
12	0	88	12	0	0	88	12	0	7.0
21	0	23	73	4	1	32	66	1	5.5
22	2	22	73	3	0	37	63	0	3.2
30	3	18	63	16	4	22	74	0	3.8
40	0	1	57	42	0	5	53	42	1.6
51	0	10	57	33	0	13	53	34	4.4
52	0	8	77	15	0	13	75	12	4.8
60	7	47	46	0	8	46	46	0	5.9
70	16	65	17	2	4	50	39	7	4.4
81	2	41	57	0	4	42	54	0	5.1
82	0	30	67	3	20	6	70	4	3.1
90	0	4	75	21	0	4	21	75	2.1
96	7	44	47	2	10	54	35	1	5.6
97	59	25	16	0	48	35	17	0	7.0
State	14	37	40	9	14	37	38	11	4.9

Texas Agricultural Districts

- 11 Northern High Plains
- 12 Southern High Plains
- 21 Northern Low Plains
- 22 Southern Low Plains
- 30 Cross Timbers
- 40 Blacklands
- 51 North East
- 52 South East
- 60 Trans-Pecos
- 70 Edwards Plateau
- 81 South Central
- 82 Coastal Bend
- 90 Upper Coast
- 96 South
- 97 Lower Valley

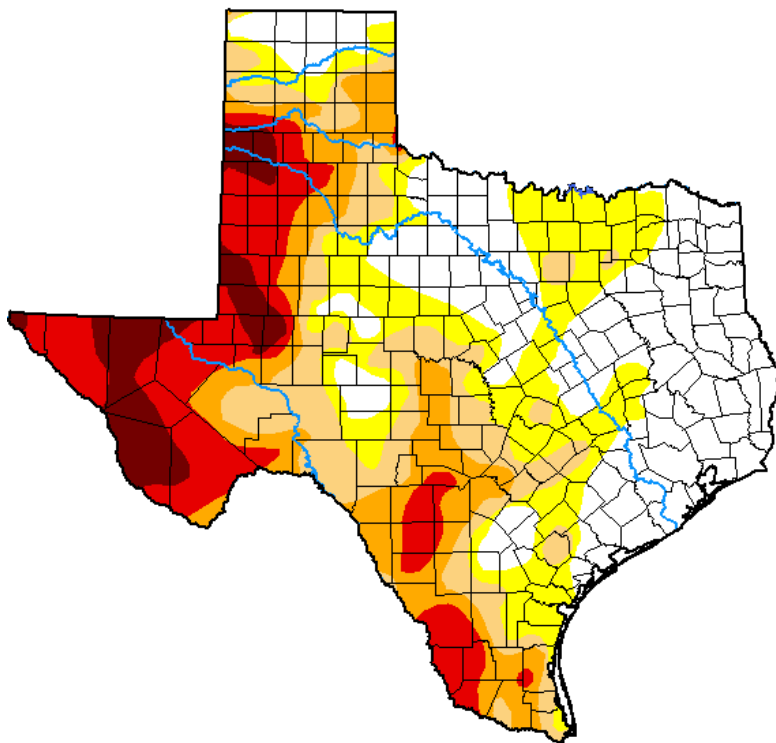


Seven Day Observed Regional Precipitation, January 24, 2021.



Source: National Weather Service, www.nws.noaa.gov.

Drought Monitor, Valid January 19, 2021.



Drought Conditions (Percent Area)

	None	D0-D4	D1-D4	D2-D4	D3-D4	D4
Current	31.44	68.56	48.56	33.06	19.82	6.08
Last Week <i>01-12-2021</i>	31.29	68.71	48.01	32.25	18.61	5.97
3 Months Ago <i>10-20-2020</i>	46.81	53.19	39.60	25.69	14.42	4.72
Start of Calendar Year <i>12-29-2020</i>	8.80	91.20	81.10	50.33	30.09	13.03
Start of Water Year <i>09-29-2020</i>	57.35	42.65	31.96	20.91	12.02	3.29
One Year Ago <i>01-21-2020</i>	42.69	57.31	34.52	14.12	0.79	0.00

Intensity:

- None
- D0 Abnormally Dry
- D1 Moderate Drought
- D2 Severe Drought
- D3 Extreme Drought
- D4 Exceptional Drought

The Drought Monitor focuses on broad-scale conditions. Local conditions may vary. For more information on the Drought Monitor, go to <https://droughtmonitor.unl.edu/About.aspx>

Author:

Richard Tinker
CPC/NOAA/NWS/NCEP



Source: National Drought Mitigation Center, a partnership with USDA, U.S. Department of Commerce/NOAA, <http://droughtmonitor.unl.edu>.