



Texas Crop Progress and Condition

Southern Plains Regional Field Office
Post Office Box 70 Austin, Texas 78767
(800) 626-3142 · FAX (855) 270-2725 · www.nass.usda.gov/tx

Issue:
TX-CW0321 correction

Weekly Summary for February 1 - February 7

Released:
April 2, 2021

Most of the state received from trace amounts to upwards of 0.1 inch of precipitation. Some areas of the Upper Coast received up to 1.0 inch of rainfall. There were 6.0 days suitable for fieldwork.

Small Grains: Winter wheat in the High and Low Plains and the Cross Timbers continued to develop. Small grains in the Blacklands were developing well under the cool and wet weather patterns; however, some fields have already required an herbicide spray. Wheat and oats under irrigation in South Texas were in good condition.

Row Crops: Farmers prepared fields for corn planting in the Blacklands. Some producers in the Upper Coast started planting corn while others considered preparation of rice plantings. Meanwhile, producers in the Lower Valley pre-watered fields in preparation for planting corn, sorghum, and cotton.

Fruit, Vegetable and Specialty Crops: Pecan harvest was winding down in Edwards Plateau while Trans-Pecos pecan producers were preparing to harvest trees that will be ready soon. Onion and potato planting continued in North East Texas. Some early varieties of fruit trees have begun to bloom in South Central Texas. Meanwhile, winter vegetables are continuing to grow and harvest has begun in the Lower Valley.

Livestock, Range and Pasture: Stock tanks were reported full in the Northern Low Plains, while the water levels were dropping some in the Cross Timbers. Supplemental feeding continued across the state. Pasture and range condition was rated mostly fair to poor, though pasture conditions varied greatly across the state. South Texas and the Lower Valley were observing increased drought conditions. Meanwhile, the Blacklands and North East Texas reported feral hog damage in several areas.

Crop Progress

Stage	Percent of Acreage			
	Current Week	Previous Week	Previous Year	5 Year Average
Winter Wheat Headed	2	1	19	4
Oats Headed	6	1	5	1

Crop Condition

Crop	Percent of Acreage					Index ¹	
	Excellent	Good	Fair	Poor	Very Poor	2021	2020
Wheat	12	24	33	19	12	60	53
Oats	4	16	29	27	24	44	57
Range and Pasture	2	13	32	31	22	42	53

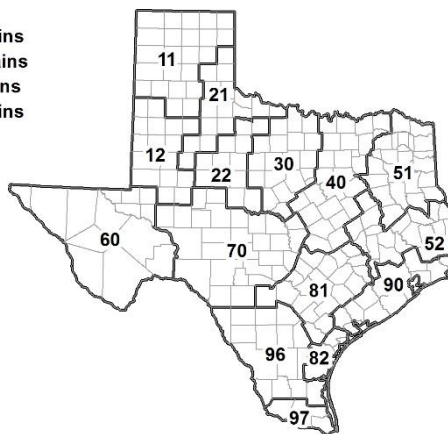
¹ The formula for the condition index is $I = (5V + 25P + 60F + 90G + 110E)/100$ where I = crop condition index and V, P, F, G, E = percentage of crop rated very poor, poor, fair, good, excellent.

Soil Moisture and Days Suitable by District

District	Topsoil Moisture Condition by District				Subsoil Moisture Condition by District				Days Suitable for Fieldwork
	Percentage of Acreage				Percentage of Acreage				
	Very Short	Short	Adequate	Surplus	Very Short	Short	Adequate	Surplus	
11	56	40	4	0	53	27	20	0	6.3
12	4	80	14	2	12	59	12	17	5.7
21	4	35	61	0	2	38	59	1	6.9
22	5	34	60	1	5	36	59	0	6.1
30	6	30	63	1	5	31	64	0	6.2
40	0	12	75	13	0	13	75	12	5.1
51	6	18	62	14	0	6	60	34	4.4
52	0	13	84	3	0	16	78	6	6.6
60	7	47	46	0	8	46	46	0	5.9
70	8	30	58	4	5	20	72	3	6.3
81	1	46	51	2	3	45	51	1	6.8
82	0	41		0	22	12	66	0	7.0
90	0	2	89	9	0	0	51	49	5.9
96	18	50	31	1	18	47	34	1	6.5
97	62	28	10	0	51	38	11	0	7.0
State	16	39	42	3	17	32	42	9	6.0

Texas Agricultural Districts

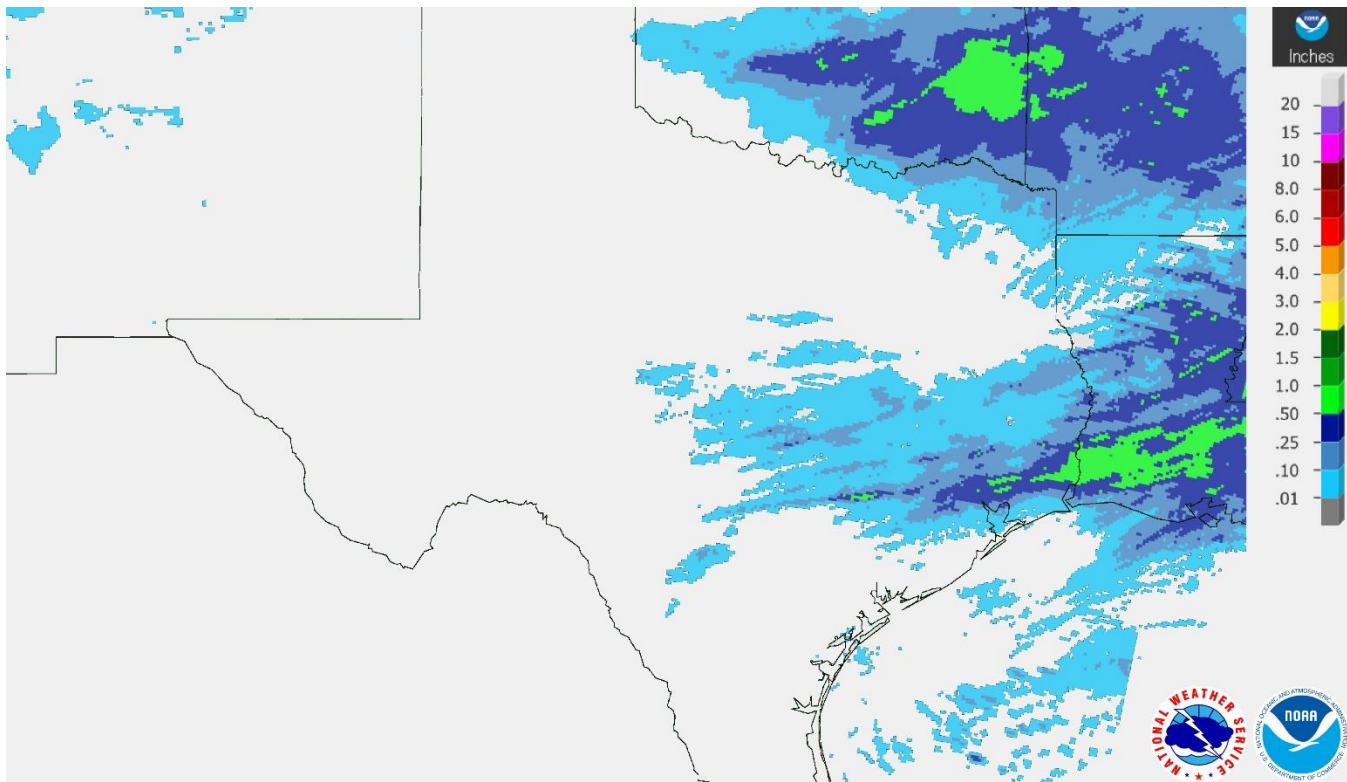
- 11 Northern High Plains
- 12 Southern High Plains
- 21 Northern Low Plains
- 22 Southern Low Plains
- 30 Cross Timbers
- 40 Blacklands
- 51 North East
- 52 South East
- 60 Trans-Pecos
- 70 Edwards Plateau
- 81 South Central
- 82 Coastal Bend
- 90 Upper Coast
- 96 South
- 97 Lower Valley



Seven Day Observed Regional Precipitation, February 7, 2021.

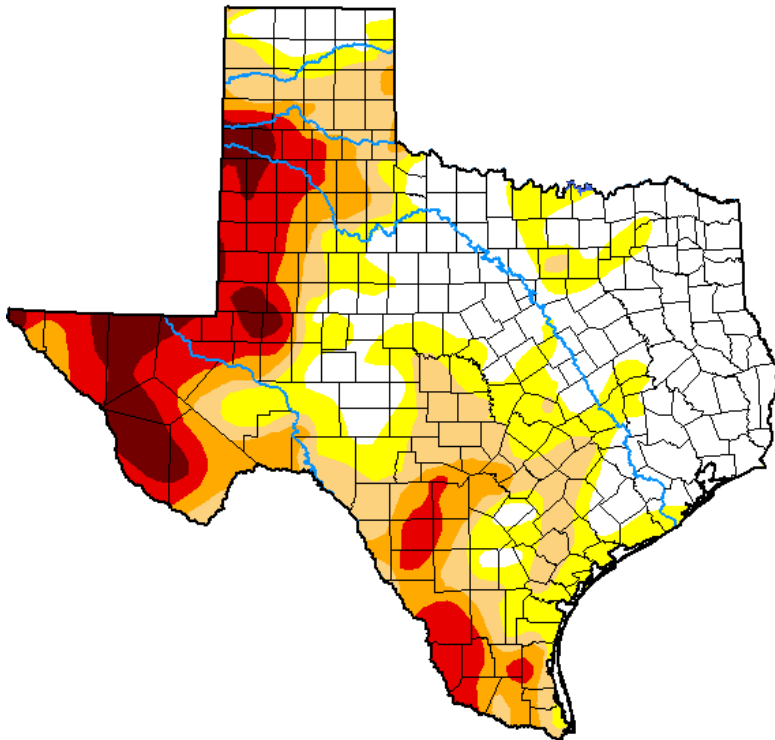
Texas Crop Progress and Condition (8 February 2021)

USDA, National Agricultural Statistics Service, Southern Plains Regional Field Office



Source: National Weather Service, www.nws.noaa.gov.

Drought Monitor, Valid February 2, 2021.



Drought Conditions (Percent Area)

	None	D0-D4	D1-D4	D2-D4	D3-D4	D4
Current	34.91	65.09	44.90	28.73	17.48	5.47
Last Week <i>01-26-2021</i>	36.97	63.03	44.12	28.03	16.84	5.28
3 Months Ago <i>11-03-2020</i>	32.17	67.83	45.52	25.00	13.54	3.93
Start of Calendar Year <i>12-29-2020</i>	8.80	91.20	81.10	50.33	30.09	13.03
Start of Water Year <i>09-29-2020</i>	57.35	42.65	31.96	20.91	12.02	3.29
One Year Ago <i>02-04-2020</i>	46.59	53.41	33.07	12.66	0.81	0.00

Intensity:

- None
- D0 Abnormally Dry
- D1 Moderate Drought
- D2 Severe Drought
- D3 Extreme Drought
- D4 Exceptional Drought

The Drought Monitor focuses on broad-scale conditions. Local conditions may vary. For more information on the Drought Monitor, go to <https://droughtmonitor.unl.edu/About.aspx>

Author:

Brad Rippey
U.S. Department of Agriculture



Source: National Drought Mitigation Center, a partnership with USDA, U.S. Department of Commerce/NOAA, <http://droughtmonitor.unl.edu>.