



# Texas Crop Progress and Condition

Southern Plains Regional Field Office  
Post Office Box 70 Austin, Texas 78767  
(800) 626-3142 · FAX (855) 270-2725 · www.nass.usda.gov/tx

**Issue:**  
**TX-CW0421 correction**

**Weekly Summary for February 8 - February 14**

**Released:**  
**April 2, 2021**

Most of the state received from trace amounts to upwards of 2.0 inches of precipitation. Areas of the Upper Coast, South Central Texas, East Texas, and South Texas received up to 3.0 inches. Freezing temperatures with snowfall and ice were reported across the state. There were 6.0 days suitable for fieldwork.

**Small Grains:** Small grains were reported in various stages and conditions across the state. Winter wheat in the Southern Low Plains was doing well with recent moisture. Meanwhile, in the Blacklands, producers reported wheat had minimal pest issues and in prime condition for herbicide spray. Winter wheat in the Blacklands and the Northern Low Plains was in need of moisture. Producers worked to prepare fields for extreme weather throughout the state.

**Row Crops:** Cold temperatures delayed corn planting in the Cross Timbers. Meanwhile, producers were preparing cotton fields for planting in the Trans-Pecos area. Sunflower planting continued in the Lower Valley. Some corn was planted but further planting was delayed due to weather in the Coastal Bend, the Upper Coast, South Texas, and the Lower Valley.

**Fruit, Vegetable and Specialty Crops:** Pecan orchard pruning was in progress in the Trans-Pecos area. Meanwhile, in the Lower Valley, citrus and sugarcane harvest continued.

**Livestock, Range and Pasture:** Supplemental feeding increased across the state as producers worked to keep livestock safe during extremely cold temperatures. As a result, supplemental feed and hay was in high demand throughout the state. Some cattle herds reported using brush lines to block northern winds in South Texas. Meanwhile, feral hog control continued in North East Texas. Pasture and range condition was rated mostly poor to fair, though pasture conditions varied greatly across the state.

## Crop Progress

Stage	Percent of Acreage			
	Current Week	Previous Week	Previous Year	5 Year Average
<b>Winter Wheat</b>				
Headed	3	2	20	4
<b>Oats</b>				
Headed	8	6	8	2

## Crop Condition

Crop	Percent of Acreage					Index <sup>1</sup>	
	Excellent	Good	Fair	Poor	Very Poor	2021	2020
Wheat	7	26	40	18	9	60	62
Oats	2	20	36	22	20	48	58
Range and Pasture	1	11	31	35	22	39	54

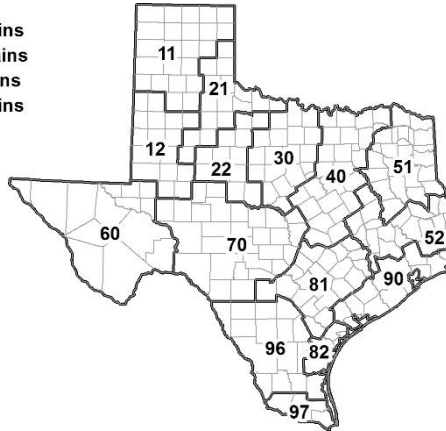
<sup>1</sup> The formula for the condition index is  $I = (5V + 25P + 60F + 90G + 110E)/100$  where I = crop condition index and V, P, F, G, E = percentage of crop rated very poor, poor, fair, good, excellent.

### Soil Moisture and Days Suitable by District

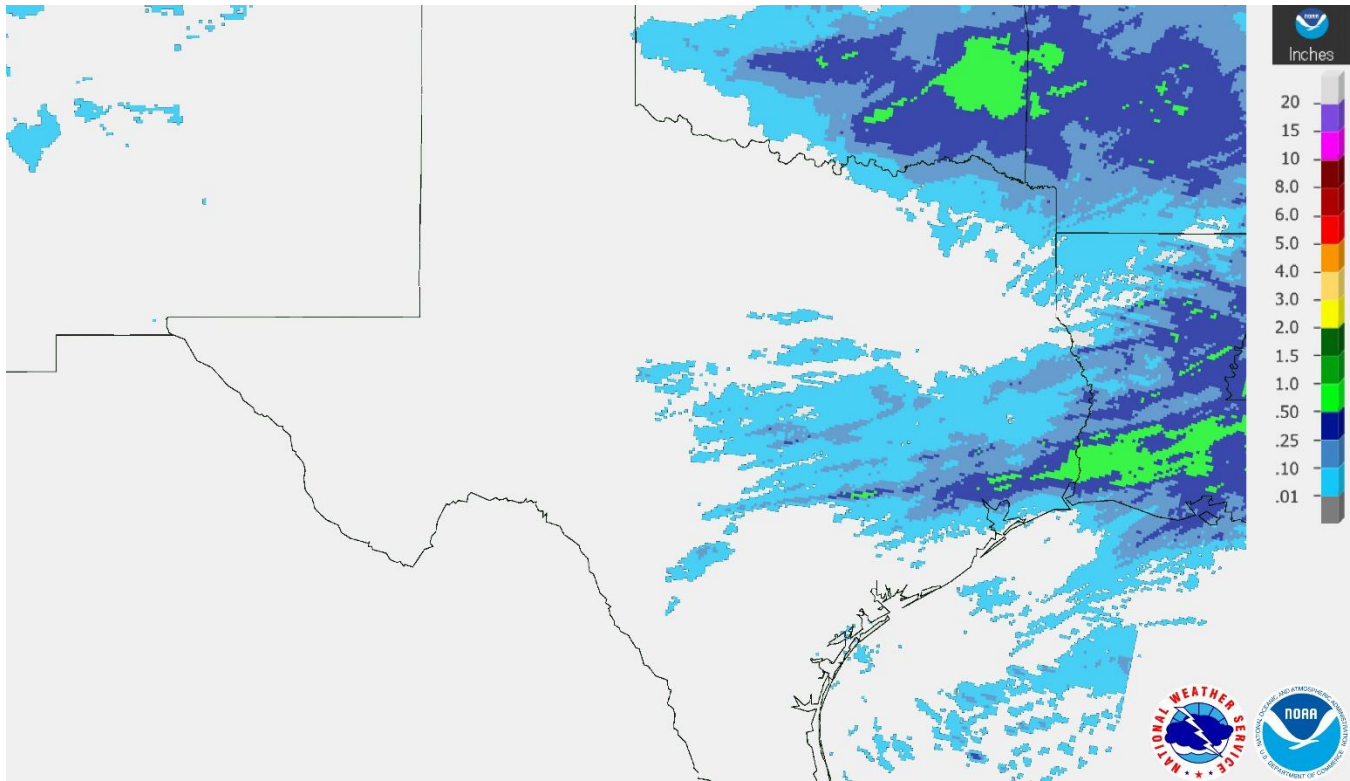
District	Topsoil Moisture Condition by District				Subsoil Moisture Condition by District				Days Suitable for Fieldwork
	Percentage of Acreage				Percentage of Acreage				
	Very Short	Short	Adequate	Surplus	Very Short	Short	Adequate	Surplus	
11	56	40	4	0	53	27	20	0	6.3
12	4	80	14	2	12	59	12	17	5.7
21	4	35	61	0	2	38	59	1	6.9
22	8	25	67	0	6	33	61	0	5.3
30	6	30	63	1	5	31	64	0	6.2
40	0	12	75	13	0	13	75	12	5.1
51	6	18	62	14	0	6	60	34	4.4
52	0	13	84	3	0	16	78	6	6.6
60	7	47	46	0	8	46	46	0	5.9
70	8	30	58	4	5	20	72	3	6.3
81	1	46	51	2	3	45	51	1	6.8
82	0	41	59	0	22	12	66	0	7.0
90	0	5	79	16	0	2	71	27	5.9
96	18	50	31	1	18	47	34	1	6.5
97	59	28	13	0	51	38	11	0	7.0
State	16	38	42	4	17	32	43	8	6.0

### Texas Agricultural Districts

- 11 Northern High Plains
- 12 Southern High Plains
- 21 Northern Low Plains
- 22 Southern Low Plains
- 30 Cross Timbers
- 40 Blacklands
- 51 North East
- 52 South East
- 60 Trans-Pecos
- 70 Edwards Plateau
- 81 South Central
- 82 Coastal Bend
- 90 Upper Coast
- 96 South
- 97 Lower Valley

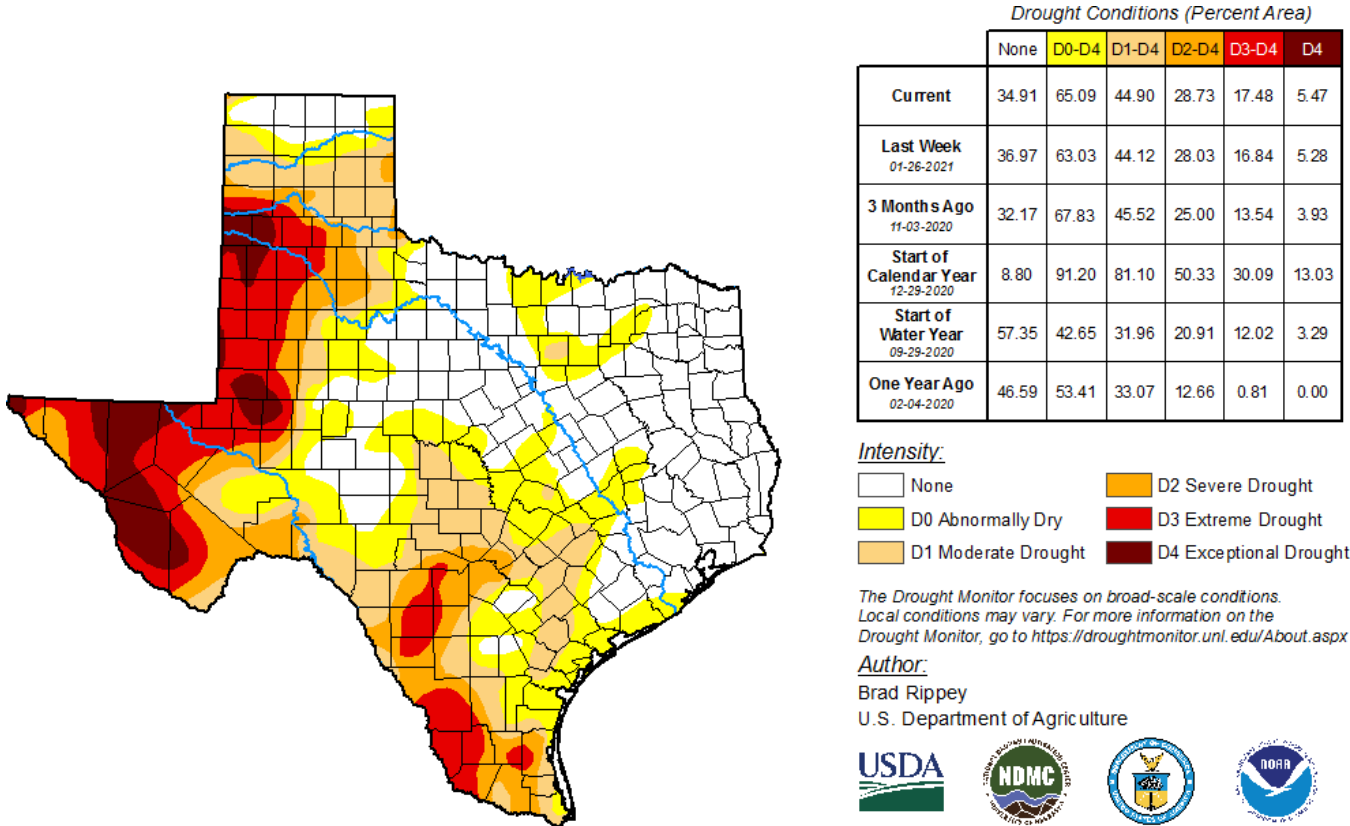


**Seven Day Observed Regional Precipitation, February 14, 2021.**



Source: National Weather Service, [www.nws.noaa.gov](http://www.nws.noaa.gov)

**Drought Monitor, Valid February 9, 2021.**



Source: National Drought Mitigation Center, a partnership with USDA, U.S. Department of Commerce/NOAA, <http://droughtmonitor.unl.edu>