



## Texas Crop Progress and Condition

Southern Plains Regional Field Office  
Post Office Box 70 Austin, Texas 78767  
(800) 626-3142 · FAX (855) 270-2725 · www.nass.usda.gov/tx

**Issue: TX-CW1221**

**Weekly Summary for April 5-April 11**

**Released: April 12, 2021**

Most of the state received from trace amounts to upwards of 0.25 inches of precipitation. Some areas in the Blacklands, East Texas, and the Upper Coast received up to 4.0 inches. Precipitation was needed throughout the state as drought conditions continued in many areas. There were 6.7 days suitable for fieldwork.

**Small Grains:** Small grains were reported in various stages and conditions across the state. Small grains were reported needing more moisture in many areas of the state. The wheat crop in some areas of South Texas was under irrigation and there were reports of hay being cut.

**Row Crops:** In the High Plains and the Southern Low Plains, farmers continued pre-planting activities for row crops. Cotton planting was put on hold in the Blacklands due to the lack of moisture. Meanwhile, in the Blacklands, corn fields were beginning to exhibit leaf rolling from the lack of moisture. Cotton planting in South East Texas was in full swing. Pre-irrigation for row crops continued in the Trans-Pecos. Virtually all of the corn in South Central Texas was emerged. Cotton planting in South Central Texas, the Upper Coast, and South Texas was underway. Producers began irrigation on recently planted cotton fields in the Lower Valley.

**Fruit, Vegetable and Specialty Crops:** Pecan orchards in the Northern High Plains and Edwards Plateau had begun to bud in some areas. Producers worked on getting plastic put down on beds for watermelon and vegetable production in the Cross Timbers. Meanwhile, pecan orchards in the Trans-Pecos and vegetable fields in South East Texas continued irrigation. Onion and sugarcane harvest continued in the Lower Valley.

**Livestock, Range and Pasture:** Supplemental feeding continued across the state. Runoff rainwater was still needed in the Southern Low Plains, Edwards Plateau, and the Cross Timbers to fill tanks for livestock. Spring livestock work was increasing in the Cross Timbers. The fly population continued to increase in the Blacklands and North East Texas. Feral hog sightings in North East Texas increased. Spring shearing in Edwards Plateau of sheep and goats continued. Pasture and range condition was rated mostly poor to fair, though pasture conditions varied greatly across the state.

**Crop Condition**

Crop	Percent of Acreage					Index <sup>1</sup>	
	Excellent	Good	Fair	Poor	Very Poor	2021	2020
Wheat	6	22	36	20	16	54	80
Oats	1	16	28	34	21	42	78
Range and Pasture	1	12	28	37	22	39	73

<sup>1</sup> The formula for the condition index is  $I = (5V + 25P + 60F + 90G + 110E)/100$  where I = crop condition index and V, P, F, G, E = percentage of crop rated very poor, poor, fair, good, excellent.

### Crop Progress

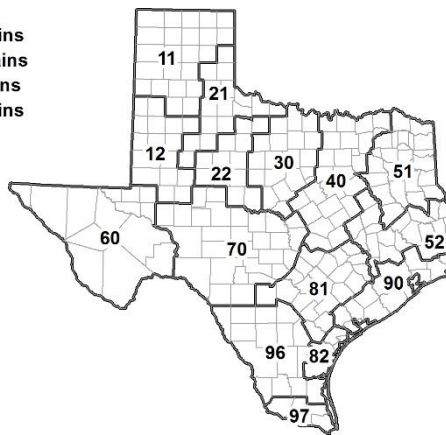
Stage	Percent of Acreage			
	Current Week	Previous Week	Previous Year	5 Year Average
Corn				
Planted	57	55	62	56
Emerged	48	30	45	39
Cotton				
Planted	13	10	15	11
Rice				
Planted	70	59	78	63
Emerged	47	32	63	43
Sorghum				
Planted	49	46	59	53
Winter Wheat				
Headed	26	25	34	30
Oats				
Headed	45	31	34	38

### Soil Moisture and Days Suitable by District

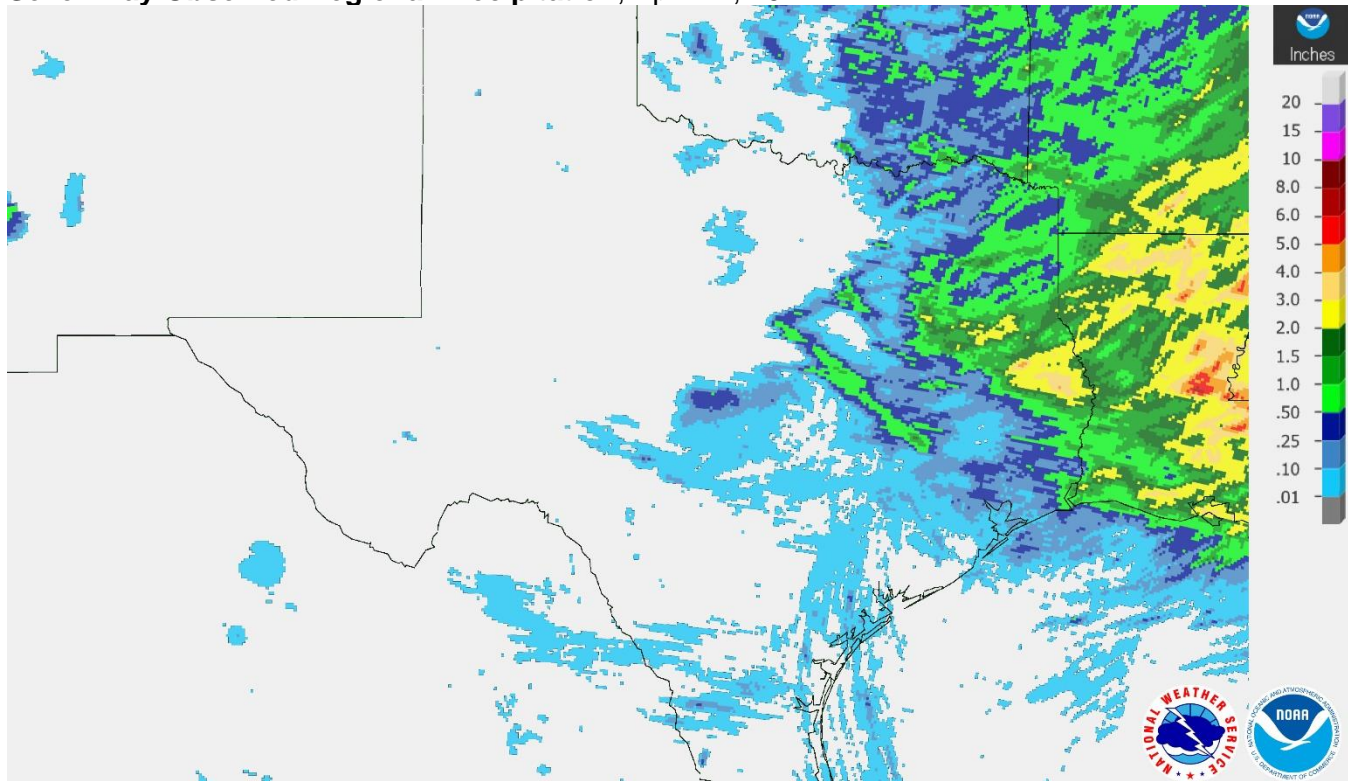
District	Topsoil Moisture Condition by District				Subsoil Moisture Condition by District				Days Suitable for Fieldwork
	Percentage of Acreage				Percentage of Acreage				
	Very Short	Short	Adequate	Surplus	Very Short	Short	Adequate	Surplus	
11	27	59	13	1	34	28	38	0	6.9
12	21	79	0	0	28	72	0	0	6.6
21	12	63	25	0	8	58	34	0	6.9
22	9	58	33	0	9	42	33	16	6.5
30	9	58	33	0	9	54	37	0	6.5
40	31	43	25	1	26	52	22	0	6.7
51	4	20	61	15	4	22	58	16	6.7
52	4	45	49	2	3	32	63	2	6.9
60	19	36	45	0	19	26	55	0	6.4
70	19	63	18	0	17	68	15	0	6.9
81	42	37	21	0	34	43	23	0	6.8
82	26	43	31	0	22	39	39	0	7.0
90	6	27	65	2	7	18	72	3	6.9
96	82	17	1	0	80	19	1	0	5.6
97	86	14	0	0	78	22	0	0	7.0
State	24	53	22	1	25	45	28	2	6.7

### Texas Agricultural Districts

- 11 Northern High Plains
- 12 Southern High Plains
- 21 Northern Low Plains
- 22 Southern Low Plains
- 30 Cross Timbers
- 40 Blacklands
- 51 North East
- 52 South East
- 60 Trans-Pecos
- 70 Edwards Plateau
- 81 South Central
- 82 Coastal Bend
- 90 Upper Coast
- 96 South
- 97 Lower Valley

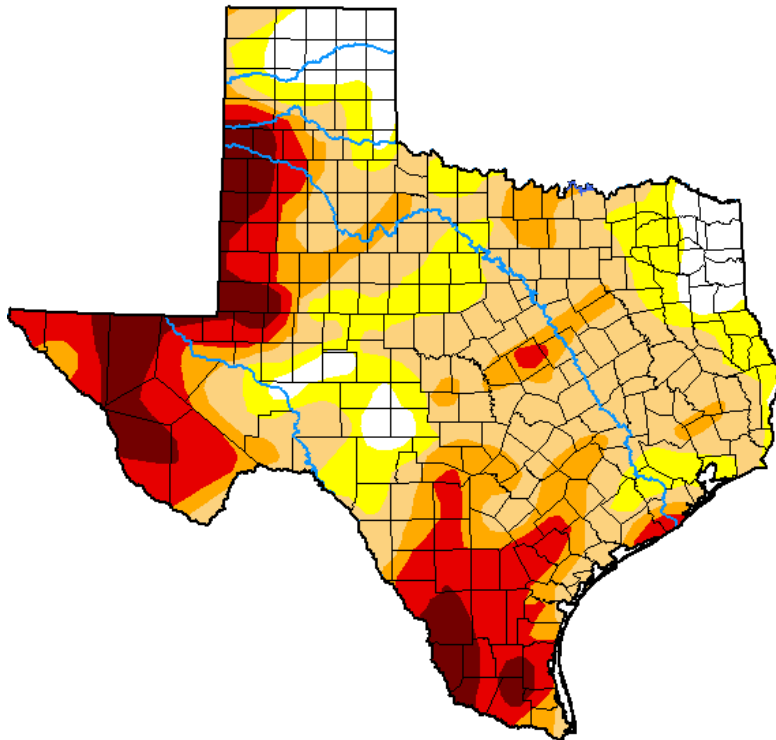


**Seven Day Observed Regional Precipitation, April 11, 2021.**



Source: National Weather Service, [www.nws.noaa.gov](http://www.nws.noaa.gov).

**Drought Monitor, Valid April 6, 2021.**



*Drought Conditions (Percent Area)*

	None	D0-D4	D1-D4	D2-D4	D3-D4	D4
<b>Current</b>	8.55	91.45	74.46	38.46	23.57	8.53
<b>Last Week</b> <i>03-30-2021</i>	10.72	89.28	69.20	34.25	20.38	6.85
<b>3 Months Ago</b> <i>01-05-2021</i>	17.37	82.63	58.33	37.80	19.24	8.20
<b>Start of Calendar Year</b> <i>12-29-2020</i>	8.80	91.20	81.10	50.33	30.09	13.03
<b>Start of Water Year</b> <i>09-29-2020</i>	57.35	42.65	31.96	20.91	12.02	3.29
<b>One Year Ago</b> <i>04-07-2020</i>	74.84	25.16	19.22	10.49	2.50	0.14

**Intensity:**

- None
- D0 Abnormally Dry
- D1 Moderate Drought
- D2 Severe Drought
- D3 Extreme Drought
- D4 Exceptional Drought

*The Drought Monitor focuses on broad-scale conditions. Local conditions may vary. For more information on the Drought Monitor, go to <https://droughtmonitor.unl.edu/About.aspx>*

**Author:**

Deborah Bathke  
National Drought Mitigation Center



Source: National Drought Mitigation Center, a partnership with USDA, U.S. Department of Commerce/NOAA, <http://droughtmonitor.unl.edu>.