



Texas Crop Progress and Condition

Southern Plains Regional Field Office
Post Office Box 70 Austin, Texas 78767
(800) 626-3142 · FAX (855) 270-2725 · www.nass.usda.gov/tx

Issue: TX-CW1621

Weekly Summary for May 3-May 9

Released: May 10, 2021

Most of the state received from trace amounts to upwards of 1.5 inches of precipitation. Some areas in the Blacklands and East Texas received up to 2.0 inches. There were 5.5 days suitable for fieldwork.

Small Grains: Small grains in areas of the Northern High and Low Plains, the Cross Timbers, and the Blacklands were being baled for hay. Hay production in North East Texas had begun. Winter wheat conditions in the Edwards Plateau were improving. Meanwhile, winter wheat producers in South Central Texas were gearing up for harvest.

Row Crops: Cotton planting had begun and corn planting continued in the Northern High Plains. Pre-irrigation on cotton fields in the Southern High Plains continued. Pre-plant activities for cotton continued in the Northern Low Plains. Sorghum planting in the Southern Low Plains continued. Corn, cotton, and grain sorghum were progressing well after the recent rainfall and sunshine in the Blacklands. Cotton planting in areas of the Trans-Pecos was nearing completion. Meanwhile, some cotton fields were being replanted in South Central Texas following severe weather. Cotton planting was almost complete in South Texas, while peanut planting had commenced. Row crops in the Lower Valley progressed well.

Fruit, Vegetable and Specialty Crops: Pecans were being irrigated in the Southern High Plains and the Trans-Pecos. Pecans in the Cross Timbers were progressing. Vegetable planting continued, as vegetables and melons were growing well in North East Texas. Pecans in the Edwards Plateau and South Central Texas were being irrigated and fertilized. Onions and other vegetables were being harvested in the Lower Valley.

Livestock, Range and Pasture: Supplemental feeding continued across the state. Cattle producers in the Southern High Plains began turning their bulls out for spring breeding. Rainwater runoff was needed in the Northern Low Plains to fill tanks for livestock water. Insects continued to be a problem for livestock in the Cross Timbers and South East Texas. Feral hog activity in North East Texas continued. Spring calving and shearing of sheep and goats continued in the Edwards Plateau. Pasture and range condition was rated mostly fair to poor, though pastures showed some improvement due to recent rainfall events across most of the state.

Crop Condition

Crop	Percent of Acreage					Index ¹	
	Excellent	Good	Fair	Poor	Very Poor	2021	2020
Corn	11	67	18	3	1	84	73
Rice	9	46	40	5	0	77	83
Wheat	8	22	39	23	8	58	70
Oats	2	36	30	25	7	59	79
Range and Pasture	3	20	31	30	16	48	58

¹ The formula for the condition index is $I = (5V + 25P + 60F + 90G + 110E)/100$ where I = crop condition index and V, P, F, G, E = percentage of crop rated very poor, poor, fair, good, excellent.

Crop Progress

Stage	Percent of Acreage			
	Current Week	Previous Week	Previous Year	5 Year Average
Corn				
Planted	76	68	82	77
Emerged	58	57	68	64
Silked	2	0	5	8
Cotton				
Planted	25	19	35	23
Peanuts				
Planted	8	0	14	18
Rice				
Planted	92	91	95	87
Emerged	77	72	90	80
Sorghum				
Planted	68	66	75	76
Headed	18	16	13	10
Soybeans				
Planted	45	37	53	57
Emerged	20	10	(NA)	(NA)
Winter Wheat				
Headed	76	65	87	83
Harvested	5	0	2	2
Oats				
Headed	95	90	97	94
Harvested	10	7	0	1

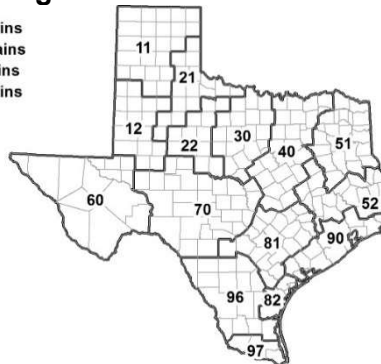
(NA) Not available.

Soil Moisture and Days Suitable by District

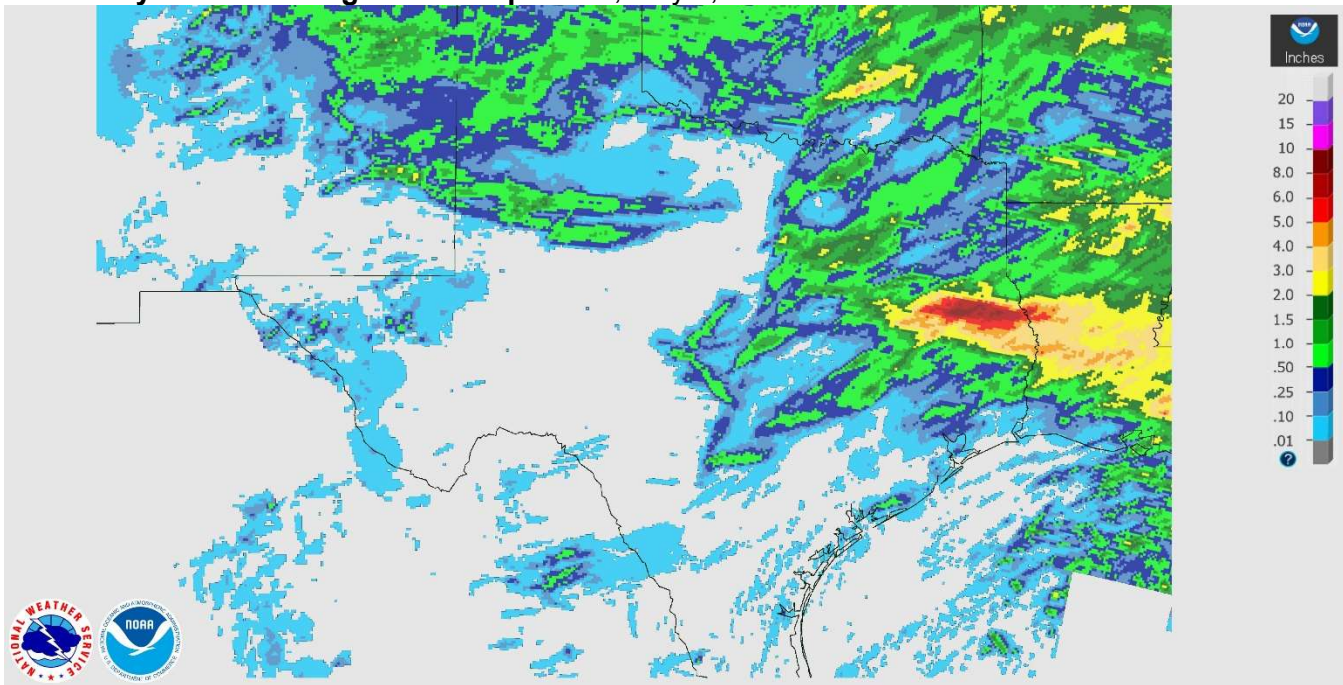
District	Topsoil Moisture Condition by District				Subsoil Moisture Condition by District				Days Suitable for Fieldwork
	Percentage of Acreage				Percentage of Acreage				
	Very Short	Short	Adequate	Surplus	Very Short	Short	Adequate	Surplus	
11	29	53	18	0	39	45	16	0	6.4
12	19	38	42	1	25	57	17	1	5.4
21	1	25	73	1	1	26	71	2	4.7
22	0	29	71	0	0	37	63	0	5.2
30	0	14	73	13	0	16	81	3	5.2
40	3	14	78	5	8	27	61	4	5.2
51	2	8	65	25	1	10	65	24	6.2
52	0	13	58	29	0	13	57	30	5.7
60	25	20	55	0	25	21	54	0	6.2
70	26	34	40	0	28	38	34	0	6.3
81	0	13	83	4	6	34	58	2	5.9
82	0	8	92	0	0	11	89	0	3.1
90	1	8	47	44	2	9	68	21	3.2
96	30	39	31	0	52	21	27	0	5.2
97	79	17	4	0	69	24	7	0	7.0
State	14	29	51	6	19	35	42	4	5.5

Texas Agricultural Districts

- 11 Northern High Plains
- 12 Southern High Plains
- 21 Northern Low Plains
- 22 Southern Low Plains
- 30 Cross Timbers
- 40 Blacklands
- 51 North East
- 52 South East
- 60 Trans-Pecos
- 70 Edwards Plateau
- 81 South Central
- 82 Coastal Bend
- 90 Upper Coast
- 96 South
- 97 Lower Valley

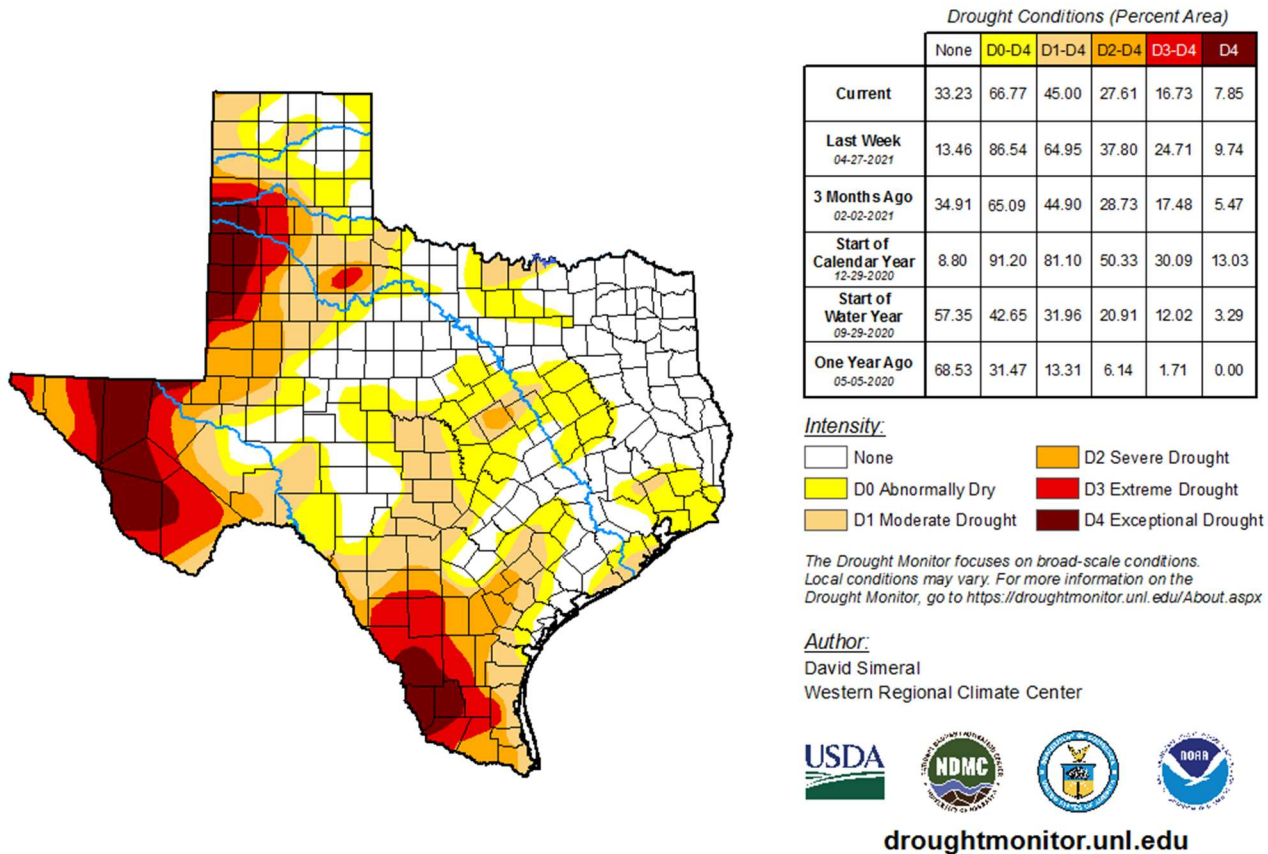


Seven Day Observed Regional Precipitation, May 4, 2021.



Source: National Weather Service, www.nws.noaa.gov.

Drought Monitor, Valid May 2, 2021.



Source: National Drought Mitigation Center, a partnership with USDA, U.S. Department of Commerce/NOAA, <http://droughtmonitor.unl.edu>.