



Texas Crop Progress and Condition

Southern Plains Regional Field Office
Post Office Box 70 Austin, Texas 78767
(800) 626-3142 · FAX (855) 270-2725 · www.nass.usda.gov/tx

Issue: TX-CW1721

Weekly Summary for May 10-May 16

Released: May 17, 2021

Most of the state received from trace amounts to upwards of 5.0 inches of precipitation. Some areas in East Texas received up to 10.0 inches. There were 5.1 days suitable for fieldwork.

Small Grains: Winter wheat headed reached 92 percent, down 3 points from the previous year and down 1 point from normal. Winter wheat harvested for grain reached 10 percent, up 3 points from the previous year and from normal. Oats harvested for grain reached 11 percent, down 1 point from the previous year and from normal. Irrigated winter wheat was progressing well in the Northern High Plains. Some small grains were cut for hay in the Southern Low Plains, the Cross Timbers, and the Blacklands but rainfall prevented bailing. Oats were showing low levels of loose smut in some areas of the Blacklands. Winter wheat was reaching maturity in areas of the Edwards Plateau.

Row Crops: Corn planted reached 86 percent, down 6 points from the previous year but up 2 points from normal. Corn emerged reached 72 percent, down 7 points from the previous year and unchanged from normal. Corn silking reached 17 percent, up 3 points from the previous year and up 1 point from normal. Cotton planted reached 35 percent, down 10 points from the previous year but up 1 point from normal. Cotton squaring reached 2 percent, down 5 points from the previous year and down 4 points from normal. Peanuts planted reached 11 percent, down 14 points from the previous year and down 27 points from normal. Rice planted reached 95 percent, down 2 points from the previous year but up 5 points from normal. Rice emerged reached 82 percent, down 10 points from the previous year and down 2 points from normal. Sorghum planted reached 73 percent, down 6 points from the previous year and from normal. Sorghum headed reached 23 percent, up 4 points from the previous year and from normal. Soybeans planted reached 61 percent, down 6 points from the previous year and from normal. Cotton planting was underway in the High and Low Plains but was slowed due to wet conditions. Peanuts were waiting for drier conditions in the Cross Timbers to be planted. Corn was showing Stewart's Disease in some areas of the Blacklands. Cotton farmers in the Upper Coast addressed issues with weeds and fleahoppers.

Fruit, Vegetable and Specialty Crops: Pecans producers in the Southern High Plains and South Texas were still monitoring for pecan nut casebearers. Meanwhile, in the Edwards Plateau and the Upper Coast some pecan producers sprayed for pecan nut casebearers. Vegetable production was underway as watermelon and cantaloupes progressed well in South Texas. Onion and winter vegetable harvest was nearing completion in the Lower Valley. Sweet corn harvest commenced in South Texas.

Livestock, Range and Pasture: Supplemental feeding continued across the state. Cattle were in good shape in the Cross Timbers as breeding season continued. Pasture and range condition was rated mostly fair to good, though pastures continued to show improvement due to recent rainfall events across most of the state.

Crop Condition

Crop	Percent of Acreage					Index ¹	
	Excellent	Good	Fair	Poor	Very Poor	2021	2020
Corn	17	63	17	2	1	86	78
Rice	10	46	39	5	0	77	79
Sorghum	5	66	14	14	1	77	64
Wheat	3	22	40	21	14	53	69
Oats	1	41	24	24	10	59	80
Range and Pasture	5	23	31	27	14	52	60

¹ The formula for the condition index is $I = (5V + 25P + 60F + 90G + 110E)/100$ where I = crop condition index and V, P, F, G, E = percentage of crop rated very poor, poor, fair, good, excellent.

Crop Progress

Stage	Percent of Acreage			
	Current Week	Previous Week	Previous Year	5 Year Average
Corn				
Planted	86	76	92	84
Emerged	72	58	79	72
Silked	17	2	14	16
Cotton				
Planted	35	25	45	34
Squaring	2	(NA)	7	6
Peanuts				
Planted	11	8	25	38
Rice				
Planted	95	92	97	90
Emerged	82	77	92	84
Sorghum				
Planted	73	68	79	79
Headed	23	18	19	19
Soybeans				
Planted	61	45	67	67
Emerged	30	20	(NA)	(NA)
Sunflowers				
Planted	15	(NA)	(NA)	(NA)
Winter Wheat				
Headed	92	76	95	93
Harvested	10	5	7	7
Oats				
Harvested	11	10	12	12

(NA) Not available.

Soil Moisture and Days Suitable by District

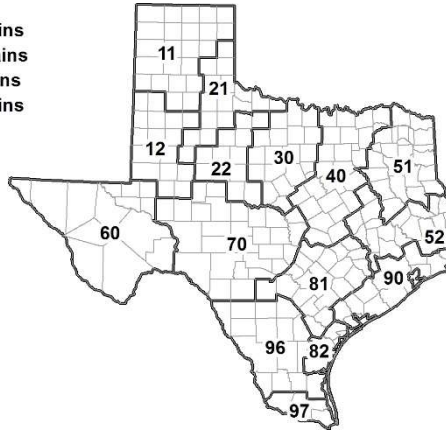
District	Topsoil Moisture Condition by District				Subsoil Moisture Condition by District				Days Suitable for Fieldwork
	Percentage of Acreage				Percentage of Acreage				
	Very Short	Short	Adequate	Surplus	Very Short	Short	Adequate	Surplus	
11	41	54	4	1	46	45	7	2	5.7
12	21	40	36	3	23	65	10	2	6.4
21	1	24	75	0	1	29	70	0	4.8
22	0	16	80	4	12	21	64	3	5.0
30	0	15	66	19	2	16	69	13	4.0
40	1	5	60	34	3	14	53	30	3.5
51	2	4	63	31	2	4	62	32	5.3
52	0	12	45	43	0	12	45	43	4.5
60	35	31	34	0	35	32	33	0	5.8
70	21	10	68	1	19	29	51	1	5.8
81	0	10	76	14	6	27	63	4	6.1
82	0	0	41	59	0	5	36	59	1.5
90	0	4	54	42	1	3	74	22	5.2
96	13	9	73	5	16	35	47	2	4.1
97	13	11	66	10	15	22	58	5	1.6
State	14	25	48	13	17	32	40	11	5.1

Texas Agricultural Districts

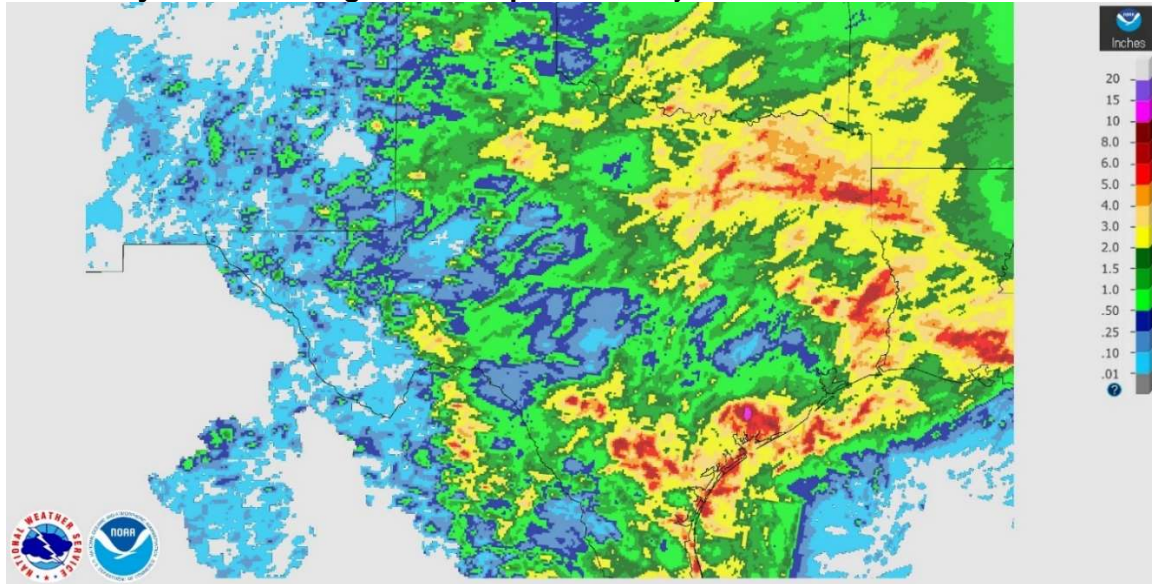
Texas Crop Progress and Condition (17 May 2021)

USDA, National Agricultural Statistics Service, Southern Plains Regional Field Office

- 11 Northern High Plains
- 12 Southern High Plains
- 21 Northern Low Plains
- 22 Southern Low Plains
- 30 Cross Timbers
- 40 Blacklands
- 51 North East
- 52 South East
- 60 Trans-Pecos
- 70 Edwards Plateau
- 81 South Central
- 82 Coastal Bend
- 90 Upper Coast
- 96 South
- 97 Lower Valley

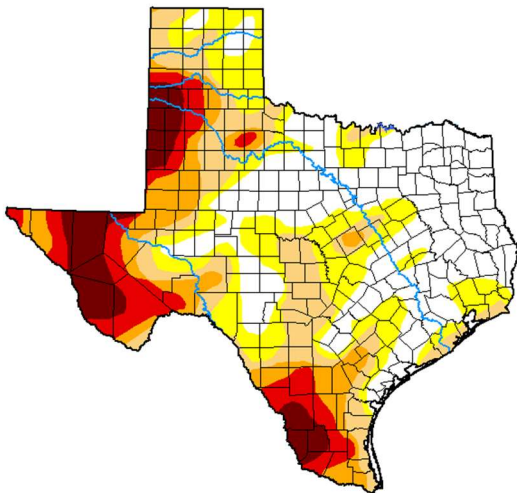


Seven Day Observed Regional Precipitation, May 11, 2021.



Source: National Weather Service, www.nws.noaa.gov.

Drought Monitor, Valid May 9, 2021.



Drought Conditions (Percent Area)

	None	D0-D4	D1-D4	D2-D4	D3-D4	D4
Current	34.32	65.68	44.29	27.69	16.88	7.85
Last Week <small>05-04-2021</small>	33.23	66.77	45.00	27.61	16.73	7.85
3 Months Ago <small>02-09-2021</small>	25.72	74.28	46.98	30.24	18.16	5.56
Start of Calendar Year <small>12-29-2020</small>	8.80	91.20	81.10	50.33	30.09	13.03
Start of Water Year <small>09-29-2020</small>	57.35	42.65	31.96	20.91	12.02	3.29
One Year Ago <small>05-12-2020</small>	54.68	45.32	14.65	5.44	1.99	0.00

- Intensity**
- None
 - D0 Abnormally Dry
 - D1 Moderate Drought
 - D2 Severe Drought
 - D3 Extreme Drought
 - D4 Exceptional Drought

The Drought Monitor focuses on broad-scale conditions. Local conditions may vary. For more information on the Drought Monitor, go to <https://droughtmonitor.unl.edu/About.aspx>

Author:
David Simeral
Western Regional Climate Center



droughtmonitor.unl.edu

Source: National Drought Mitigation Center, a partnership with USDA, U.S. Department of Commerce/NOAA, <http://droughtmonitor.unl.edu>.