



Texas Crop Progress and Condition

Southern Plains Regional Field Office
Post Office Box 70 Austin, Texas 78767
(800) 626-3142 · FAX (855) 270-2725 · www.nass.usda.gov/tx

Issue: TX-CW1921

Weekly Summary for May 24-May 30

Released: June 1, 2021

Most of the state received from 0.1 inches to upwards of 6.0 inches of precipitation. Some areas in South Central Texas received up to 10.0 inches. There were 3.6 days suitable for fieldwork.

Small Grains: Winter wheat harvested for grain reached 18 percent, down 13 points from the previous year and down 6 points from normal. Winter wheat harvest was delayed further in some areas of the Northern Low Plains, the Cross Timbers, the Blacklands, the Upper Coast, and East Texas due to excess moisture. Oats harvested for grain reached 18 percent, down 31 point from the previous year and down 23 points from normal. Small grains in the Southern Low Plains were reaching maturity for harvest.

Row Crops: Corn silking reached 46 percent, up 2 points from the previous year and up 13 points from normal. Corn was progressing well in the Blacklands with the cooler temperatures. Cotton planted reached 54 percent, down 7 points from the previous year and down 2 points from normal. Cotton squaring reached 10 percent, down 3 points from the previous year and unchanged from normal. Corn and cotton in Edwards Plateau were progressing well. Peanuts planted reached 39 percent, down 21 points from the previous year and down 33 points from normal. Cotton and peanut planting continued in the Northern High Plains. Rice emerged reached 89 percent, down 8 points from the previous year and down 3 points from normal. Rice was progressing well in the Upper Coast, but further plantings were delayed due to wet conditions. Sorghum headed reached 36 percent, down 3 points from the previous year but up 1 point from normal. Soybeans planted reached 67 percent, down 14 points from the previous year and down 12 points from normal. Soybeans in the Lower Valley were doing well with the recent weather. Sunflowers planted reached 42 percent, up 1 point from the previous year but down 5 points from normal.

Fruit, Vegetable and Specialty Crops: Wet conditions were causing damage to summer vegetables in areas of South East Texas. Sweet corn harvest in South Texas continued. Watermelon and cantaloupe harvests in the Lower Valley were delayed but were underway by the end of the week.

Livestock, Range and Pasture: Supplemental feeding continued to decline across the state. Insects were bothering livestock in some areas of the Cross Timbers, the Blacklands, the Coastal Bend, and North East Texas. Pasture and range condition was rated mostly good to fair, though pastures continued to show improvement due to recent rainfall events across most of the state.

Crop Condition

Crop	Percent of Acreage					Index ¹	
	Excellent	Good	Fair	Poor	Very Poor	2021	2020
Corn	25	49	24	2	0	87	84
Cotton	3	17	50	28	2	56	66
Peanuts	8	41	25	25	1	67	75
Rice	12	40	46	1	1	77	85
Sorghum	13	67	18	2	0	86	74
Soybeans	14	34	46	5	1	75	82
Wheat	2	21	41	23	13	52	64
Oats	2	38	31	19	10	60	77
Range and Pasture	11	30	27	19	13	61	65

¹ The formula for the condition index is $I = (5V + 25P + 60F + 90G + 110E)/100$ where I = crop condition index and V, P, F, G, E = percentage of crop rated very poor, poor, fair, good, excellent.

Crop Progress

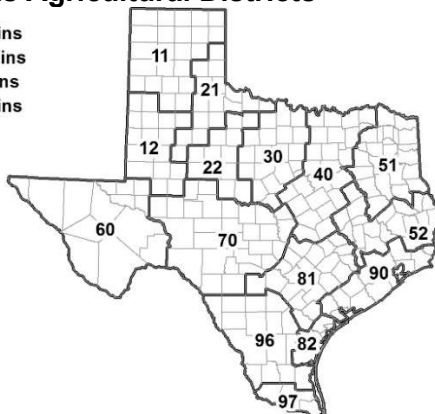
Stage	Percent of Acreage			
	Current Week	Previous Week	Previous Year	5 Year Average
Corn				
Emerged	88	85	95	86
Silked	46	28	44	33
Cotton				
Planted	54	40	61	56
Squaring	10	5	13	10
Peanuts				
Planted	39	21	60	72
Rice				
Emerged	89	87	97	92
Sorghum				
Planted	82	75	87	85
Headed	36	32	39	35
Soybeans				
Planted	67	66	81	79
Emerged	57	49	60	65
Sunflowers				
Planted	42	19	41	47
Winter Wheat				
Harvested	18	12	31	24
Oats				
Harvested	18	13	49	41

Soil Moisture and Days Suitable by District

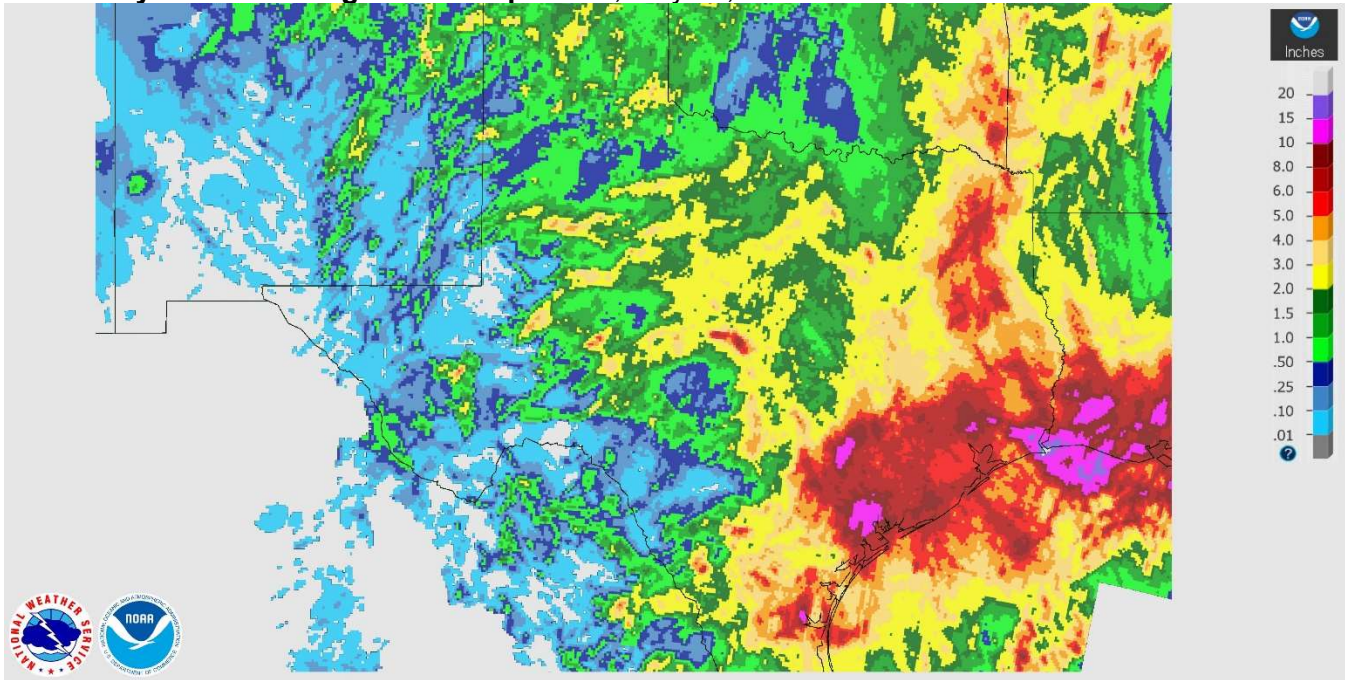
District	Topsoil Moisture Condition by District				Subsoil Moisture Condition by District				Days Suitable for Fieldwork
	Percentage of Acreage				Percentage of Acreage				
	Very Short	Short	Adequate	Surplus	Very Short	Short	Adequate	Surplus	
11	2	27	56	15	18	38	42	2	3.5
12	13	45	36	6	21	43	31	5	6.0
21	0	6	86	8	0	14	86	0	4.5
22	0	0	76	24	3	17	67	13	1.7
30	0	1	72	27	0	16	72	12	3.1
40	0	0	16	84	0	0	37	63	1.1
51	0	0	37	63	0	0	36	64	5.2
52	0	4	33	63	0	4	33	63	2.8
60	71	29	0	0	71	29	0	0	6.2
70	12	26	62	0	12	28	60	0	4.3
81	0	3	43	54	0	19	50	31	4.7
82	0	0	0	100	0	0	0	100	2.3
90	0	0	9	91	0	0	9	91	1.4
96	6	12	73	9	6	12	75	7	3.7
97	2	9	81	8	2	9	89	0	2.9
State	4	16	47	33	9	22	45	24	3.6

Texas Agricultural Districts

- 11 Northern High Plains
- 12 Southern High Plains
- 21 Northern Low Plains
- 22 Southern Low Plains
- 30 Cross Timbers
- 40 Blacklands
- 51 North East
- 52 South East
- 60 Trans-Pecos
- 70 Edwards Plateau
- 81 South Central
- 82 Coastal Bend
- 90 Upper Coast
- 96 South
- 97 Lower Valley

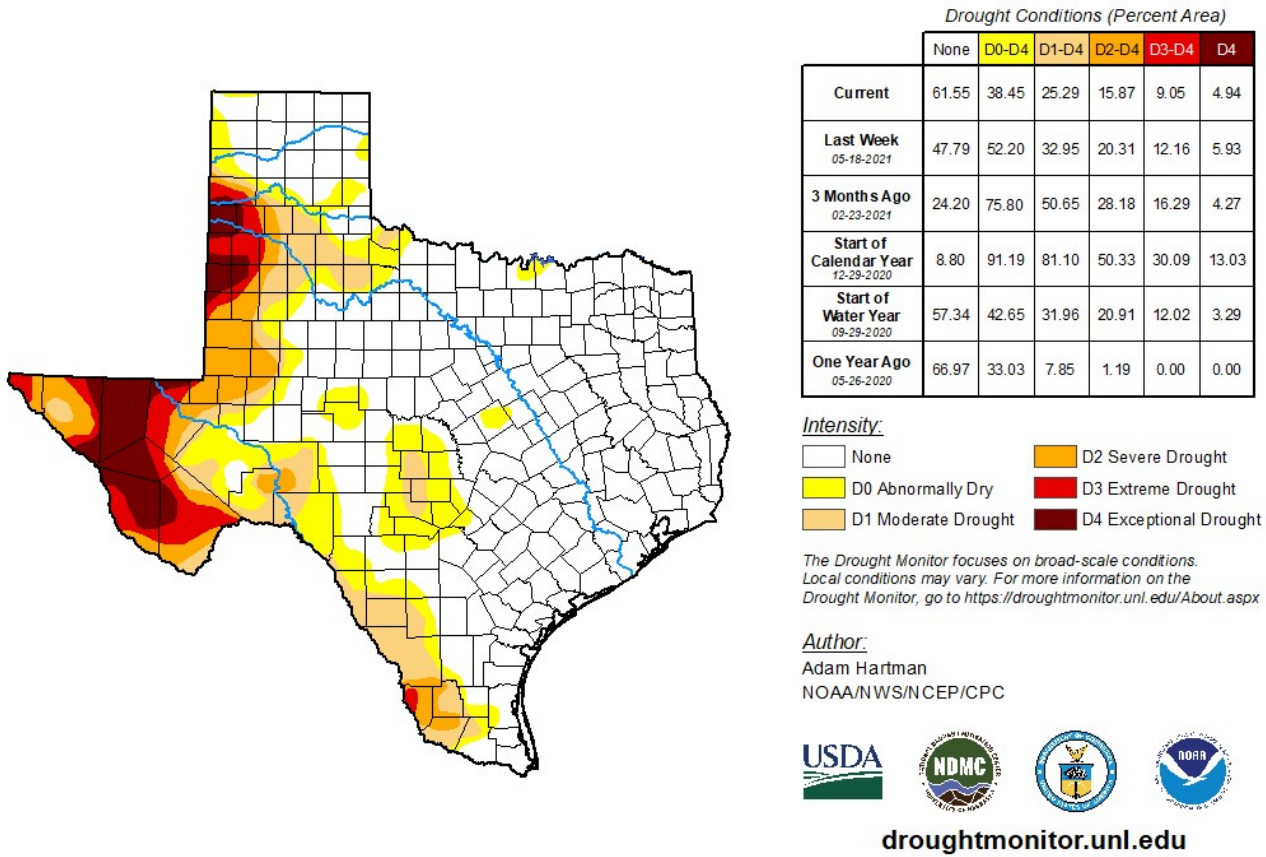


Seven Day Observed Regional Precipitation, May 31, 2021.



Source: National Weather Service, www.nws.noaa.gov.

Drought Monitor, Valid May 25, 2021.



Source: National Drought Mitigation Center, a partnership with USDA, U.S. Department of Commerce/NOAA, <http://droughtmonitor.unl.edu>.