



## Texas Crop Progress and Condition

Southern Plains Regional Field Office  
Post Office Box 70 Austin, Texas 78767  
(800) 626-3142 · FAX (855) 270-2725 · www.nass.usda.gov/tx

Issue: TX-CW2221

Weekly Summary for June 14-June 20

Released: June 21, 2021

Most of the state received from trace amounts to upwards of 1.5 inches of precipitation. Some areas in the Low Plains, the Upper Coast, South Central Texas, and the Coastal Bend received up to 2.0 inches. There were 6.3 days suitable for fieldwork.

**Small Grains:** Winter wheat harvested for grain reached 58 percent, down 25 points from the previous year and down 10 points from normal. Winter wheat harvest in the Low Plains was nearing completion. Oats harvested for grain reached 76 percent, down 14 points from the previous year and down 6 points from normal. Small grain harvest in the Blacklands was nearing completion. Farmers across the state continued cutting and baling hay.

**Row Crops:** Corn silking reached 57 percent, up 2 points from the previous year and up 6 points from normal. Cotton squaring reached 17 percent, down 9 points from the previous year and down 4 points from normal. Irrigated cotton in the Northern Low Plains was progressing well. Cotton was progressing well in the Blacklands with recent favorable weather. Cotton fields were being sprayed for weeds in the Edwards Plateau. Peanuts planted reached 80 percent, down 9 points from the previous year and down 13 points from normal. Peanut planting in some areas of the Southern High Plains and South Texas was wrapping up. Rice headed reached 19 percent, down 3 points from the previous year but up 2 points from normal. Sorghum coloring reached 36 percent, down 1 point from the previous year but up 3 points from normal. Grain sorghum and corn in the Lower Valley was steadily progressing. Soybeans blooming reached 38 percent, up 12 points from the previous year and up 9 points from normal. Sunflowers planted reached 70 percent, down 6 points from the previous year and down 9 points from normal.

**Fruit, Vegetable and Specialty Crops:** Vegetable, watermelon, blueberry, blackberry, and peach harvest progressed in North East Texas. Insects were reported in the Edwards Plateau and South Texas in some pecan orchards. Fruit and vegetables were being irrigated in the Trans-Pecos.

**Livestock, Range and Pasture:** Insect's continued bothering livestock in the Blacklands, North East Texas, and South Central Texas. Producers in the Trans-Pecos worked to keep livestock hydrated. Pasture and range condition was rated mostly good to fair, although conditions varied across the state.

Crop Condition

Crop	Percent of Acreage					Index <sup>1</sup>	
	Excellent	Good	Fair	Poor	Very Poor	2021	2020
Corn	28	49	19	2	2	87	74
Cotton	7	28	58	6	1	69	52
Peanuts	1	39	58	2	0	72	72
Rice	12	58	28	1	1	83	82
Sorghum	27	54	16	2	1	88	64
Soybeans	11	33	49	6	1	73	79
Wheat	4	20	44	22	10	55	60
Oats	3	17	40	30	10	51	63
Range and Pasture	14	33	26	15	12	65	56

<sup>1</sup> The formula for the condition index is  $I = (5V + 25P + 60F + 90G + 110E)/100$  where I = crop condition index and V, P, F, G, E = percentage of crop rated very poor, poor, fair, good, excellent.

### Crop Progress

Stage	Percent of Acreage			
	Current Week	Previous Week	Previous Year	5 Year Average
<b>Corn</b>				
Emerged	97	94	100	97
Silked	57	55	55	51
Dough	20	6	24	21
Dented	6	(NA)	0	6
<b>Cotton</b>				
Planted	96	88	94	93
Squaring	20	14	26	21
Setting Bolls	6	(NA)	10	6
<b>Peanuts</b>				
Planted	85	66	89	93
<b>Rice</b>				
Emerged	95	93	100	98
Headed	19	6	22	17
<b>Sorghum</b>				
Headed	52	45	53	52
Coloring	36	26	37	33
Mature	9	(NA)	0	7
<b>Soybeans</b>				
Planted	90	85	(NA)	(NA)
Emerged	85	72	83	85
Blooming	30	15	26	29
<b>Sunflowers</b>				
Planted	75	64	76	79
<b>Winter Wheat</b>				
Harvested	58	30	83	68
<b>Oats</b>				
Harvested	76	40	90	82

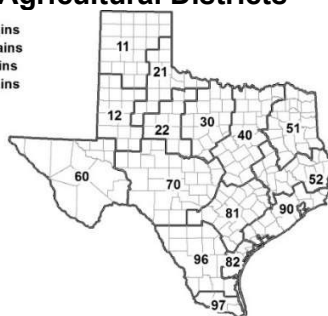
(NA) Not available.

### Soil Moisture and Days Suitable by District

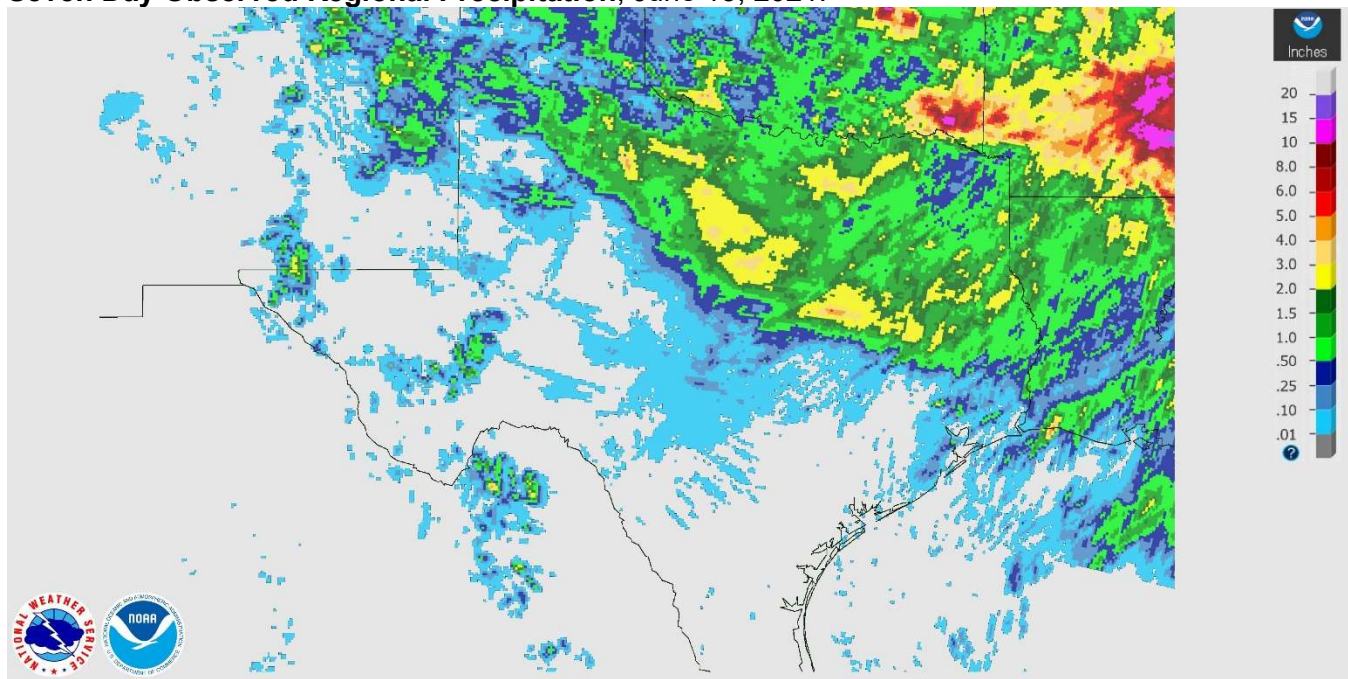
District	Topsoil Moisture Condition by District				Subsoil Moisture Condition by District				Days Suitable for Fieldwork
	Percentage of Acreage				Percentage of Acreage				
	Very Short	Short	Adequate	Surplus	Very Short	Short	Adequate	Surplus	
11	15	27	55	3	13	30	57	0	6.4
12	3	47	50	0	5	73	22	0	6.8
21	0	28	72	0	0	21	79	0	6.4
22	0	20	68	12	0	22	60	18	4.9
30	3	7	83	7	1	6	79	14	6.3
40	1	19	63	17	1	5	73	21	6.2
51	4	10	58	28	2	7	60	31	6.8
52	0	18	74	8	0	12	85	3	6.7
60	54	38	8	0	54	41	5	0	5.7
70	28	30	42	0	13	29	58	0	6.8
81	0	18	79	3	0	14	84	2	6.7
82	0	4	85	11	0	0	84	16	7.0
90	0	6	63	31	0	1	39	60	5.2
96	5	28	59	8	6	9	79	6	5.9
97	3	23	66	8	3	7	87	3	4.9
State	6	25	61	8	5	27	58	10	6.3

### Texas Agricultural Districts

- 11 Northern High Plains
- 12 Southern High Plains
- 21 Northern Low Plains
- 22 Southern Low Plains
- 30 Cross Timbers
- 40 Blacklands
- 51 North East
- 52 South East
- 60 Trans-Pecos
- 70 Edwards Plateau
- 81 South Central
- 82 Coastal Bend
- 90 Upper Coast
- 96 South
- 97 Lower Valley

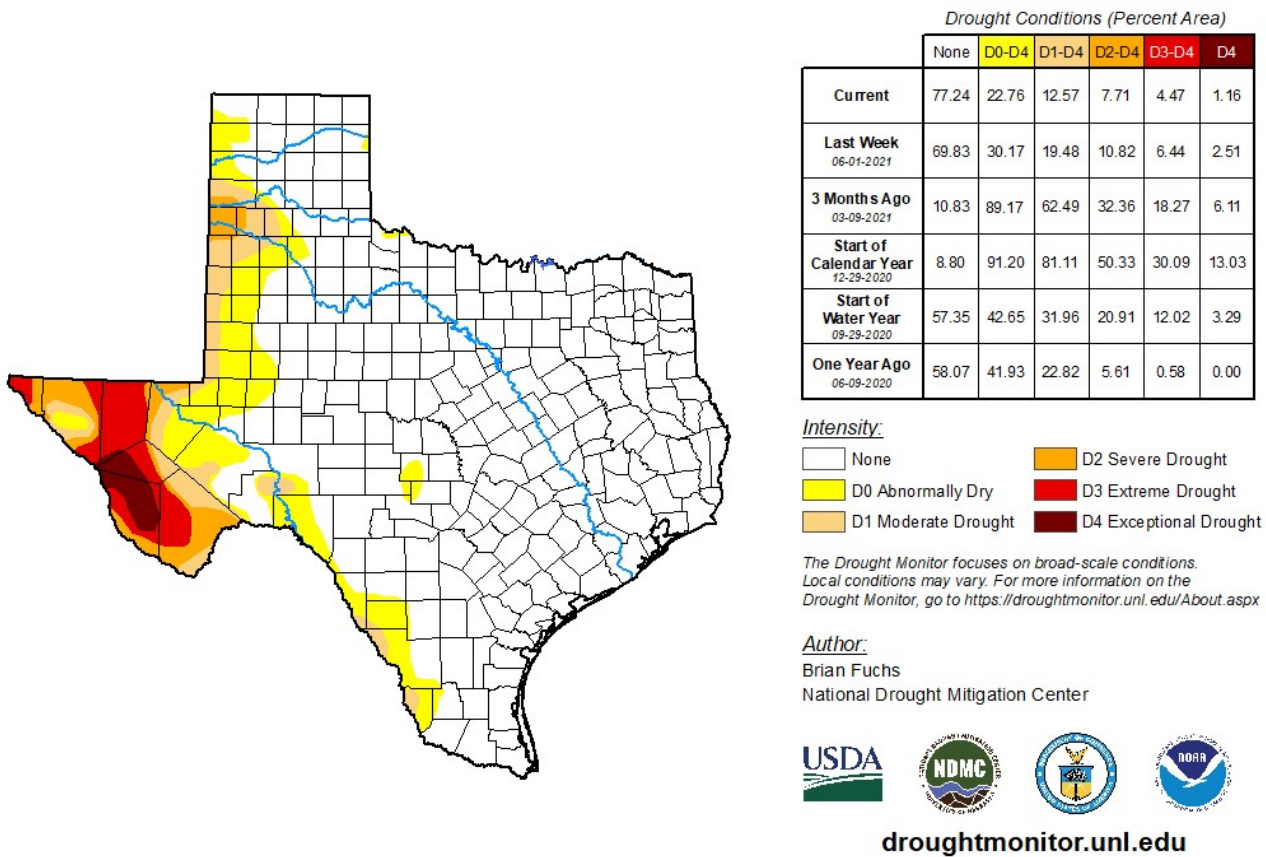


**Seven Day Observed Regional Precipitation, June 13, 2021.**



Source: National Weather Service, [www.nws.noaa.gov](http://www.nws.noaa.gov).

**Drought Monitor, Valid June 8, 2021.**



Source: National Drought Mitigation Center, a partnership with USDA, U.S. Department of Commerce/NOAA, <http://droughtmonitor.unl.edu>.