



Texas Crop Progress and Condition

Southern Plains Regional Field Office
Post Office Box 70 Austin, Texas 78767
(800) 626-3142 · FAX (855) 270-2725 · www.nass.usda.gov/tx

Issue: TX-CW3021

Weekly Summary for August 9-August 15

Released: August 16, 2021

Most of the state received from trace amounts to upwards of 2.0 inches of precipitation. The northern area of the Trans-Pecos received up to 8.0 inches, while portions of the Edwards Plateau, South Central Texas, and South Texas received less than 0.01 of an inch. There were 6.2 days suitable for fieldwork.

Small Grains: Preparations for seeding winter wheat continued in areas of the Edwards Plateau and the Northern High Plains.

Row Crops: Corn harvested was 20 percent, down 8 points from the previous year and down 15 points from normal. Some producers in the Blacklands had to stop harvesting due to rain. Cotton bolls opening reached 12 percent, down 6 points from the previous year and down 7 points from normal. In the northern part of the state, hotter weather last week was good for cotton, and in the southern part, producers began preparing for harvest. Peanuts pegging reached 80 percent, down 4 points from the previous year and down 6 points from normal. Rice harvested reached 38 percent, down 14 points from the previous year and down 13 points from normal. Sorghum harvested was 42 percent, down 12 points from the previous year and down 11 points from normal. Soybeans dropping leaves was 33 percent, up 4 points from the previous year and up 4 points from normal.

Livestock, Range and Pasture: Livestock producers throughout much of the state reported livestock were in generally good condition, but pastures could use moisture. Some reporters in the South mentioned livestock could use relief from hot and humid conditions. Pasture and range condition was rated mostly good to fair.

Soil Moisture and Days Suitable by District

District	Topsoil Moisture Condition by District				Subsoil Moisture Condition by District				Days Suitable for Fieldwork
	Percentage of Acreage				Percentage of Acreage				
	Very Short	Short	Adequate	Surplus	Very Short	Short	Adequate	Surplus	
11	8	55	37	0	5	25	70	0	7.0
12	0	6	65	29	0	6	63	31	5.6
21	4	56	37	3	5	28	62	5	5.9
22	1	54	45	0	1	38	57	4	6.4
30	10	52	38	0	8	47	45	0	6.4
40	13	31	52	4	15	14	68	3	6.4
51	17	29	51	3	15	32	49	4	6.9
52	9	49	40	2	1	25	62	12	6.8
60	18	26	33	23	18	25	33	24	5.8
70	15	34	50	1	14	33	52	1	6.2
81	0	19	79	2	0	12	86	2	6.4
82	0	5	87	8	0	0	76	24	4.7
90	3	20	54	23	3	19	55	23	4.8
96	5	26	67	2	6	20	74	0	6.3
97	4	21	69	6	4	9	80	7	7.0
State	6	34	52	8	5	21	65	9	6.2

Crop Progress

Stage	Percent of Acreage			
	Current Week	Previous Week	Previous Year	5 Year Average
Corn				
Silked	96	94	100	100
Dough	86	83	87	87
Dented	72	65	74	72
Mature	55	48	55	53
Harvested	20	(NA)	28	35
Cotton				
Squaring	90	83	98	98
Setting Bolls	68	55	75	79
Bolls Opening	12	5	18	19
Peanuts				
Pegging	80	70	84	86
Rice				
Headed	91	90	99	99
Harvested	38	25	52	51
Sorghum				
Headed	91	88	91	88
Coloring	71	69	74	75
Mature	62	58	67	64
Harvested	42	30	54	53
Soybeans				
Blooming	92	85	94	95
Setting Pods	79	73	79	79
Dropping Leaves	33	18	29	29
Sunflowers				
Harvested	42	34	41	37

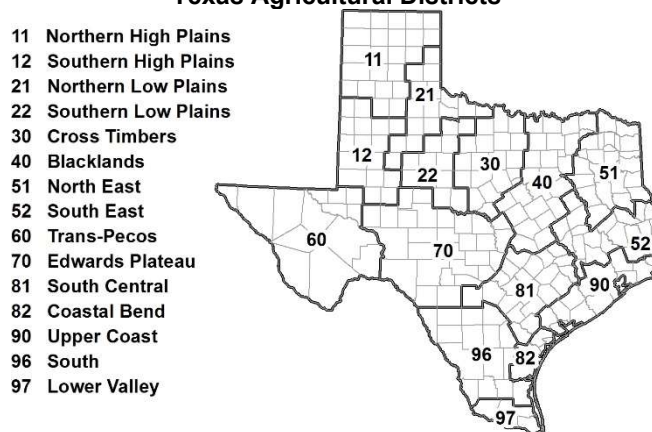
(NA) Not available.

Crop Condition

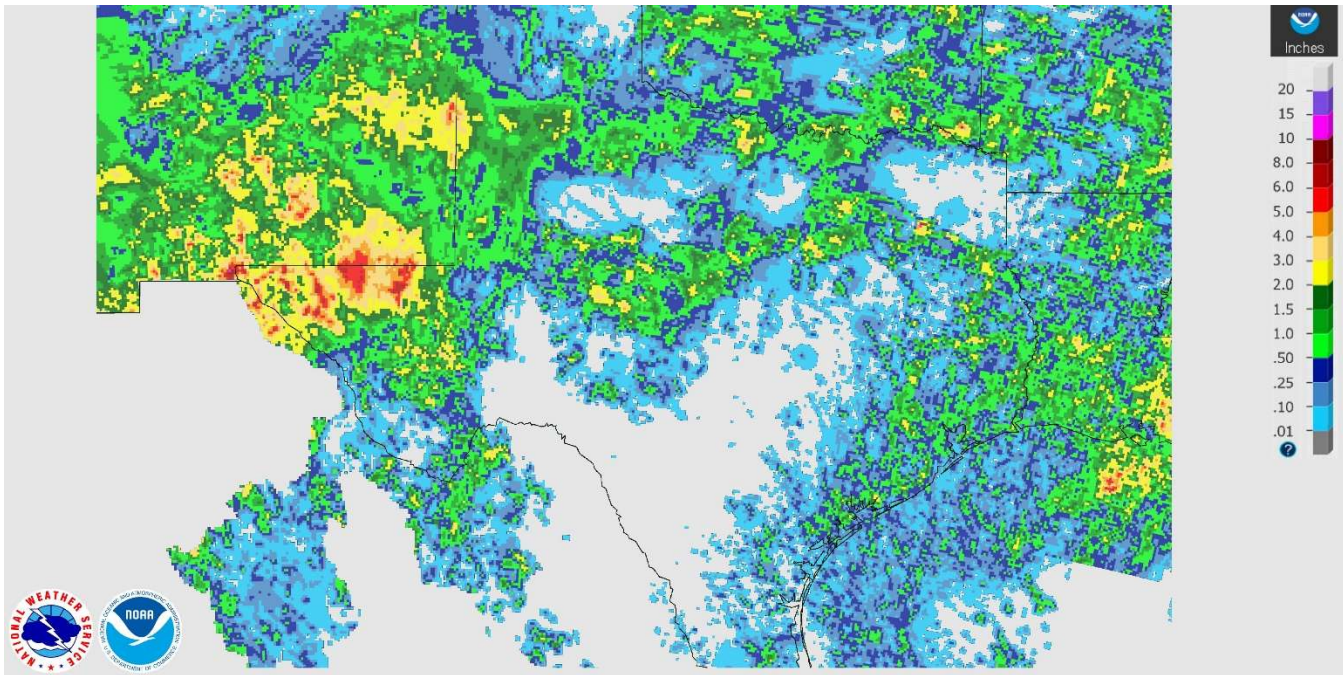
Crop	Percent of Acreage					Index ¹	
	Excellent	Good	Fair	Poor	Very Poor	2021	2020
Corn	17	45	29	6	3	78	70
Cotton	19	45	31	4	1	81	56
Peanuts	12	39	48	1	0	77	78
Rice	19	48	30	1	2	82	88
Sorghum	12	48	30	7	3	76	67
Soybeans	4	56	32	6	2	76	79
Range and Pasture	14	34	31	14	7	68	48

¹ The formula for the condition index is $I = (5V + 25P + 60F + 90G + 110E)/100$ where I = crop condition index and V, P, F, G, E = percentage of crop rated very poor, poor, fair, good, excellent.

Texas Agricultural Districts

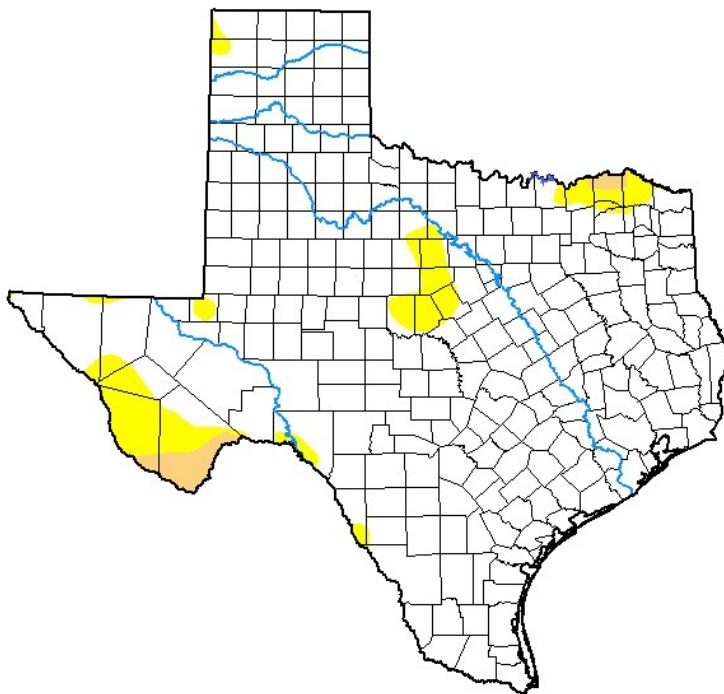


Seven Day Observed Regional Precipitation, August 15, 2021.



Source: National Weather Service, www.nws.noaa.gov

Drought Monitor, Valid August 10, 2021.



Drought Conditions (Percent Area)

	None	D0-D4	D1-D4	D2-D4	D3-D4	D4
Current	92.04	7.96	1.35	0.00	0.00	0.00
Last Week <i>08-03-2021</i>	94.72	5.28	1.10	0.00	0.00	0.00
3 Months Ago <i>05-11-2021</i>	34.32	65.68	44.28	27.69	16.88	7.85
Start of Calendar Year <i>12-29-2020</i>	8.80	91.20	81.11	50.33	30.09	13.03
Start of Water Year <i>09-29-2020</i>	57.35	42.65	31.96	20.91	12.02	3.29
One Year Ago <i>08-11-2020</i>	34.16	65.84	39.93	17.68	4.88	0.00

Intensity:

- None
- D0 Abnormally Dry
- D1 Moderate Drought
- D2 Severe Drought
- D3 Extreme Drought
- D4 Exceptional Drought

The Drought Monitor focuses on broad-scale conditions. Local conditions may vary. For more information on the Drought Monitor, go to <https://droughtmonitor.unl.edu/About.aspx>

Author:

Richard Tinker
CPC/NOAA/NWS/NCEP



droughtmonitor.unl.edu

Source: National Drought Mitigation Center, a partnership with USDA, U.S. Department of Commerce/NOAA, <http://droughtmonitor.unl.edu>