



Texas Crop Progress and Condition

Southern Plains Regional Field Office
Post Office Box 70 Austin, Texas 78767
(800) 626-3142 · FAX (855) 270-2725 · www.nass.usda.gov/tx

Issue: TX-CW3521 Weekly Summary for September 13-September 19 Released: September 20

Most of the state received from trace amounts to 2.0 inches of precipitation. There were large concentrations of precipitation in the western area of Northern High Plains and the southern area of the Edwards Plateau. The Upper Coast received 8.0 – 10.0 inches. There was an average of 6.6 days suitable for fieldwork.

Small Grains: Winter wheat seeded increased to 20 percent, up 4 points from the previous year and up 3 points from normal. In areas throughout the High and Low Plains, the Cross Timbers, the Blacklands, and the Edwards Plateau, respondents continued to echo the need for rainfall to improve wheat seeding and early growing conditions. Oats planted reached 10 percent, up 1 point from the previous year and up 2 points from normal.

Row Crops: Corn harvested increased to 70 percent, up 1 point from the previous year and up 4 points from normal. Cotton harvested reached 19 percent, unchanged from the previous year but up 2 points from normal. In the Coastal Bend, reporters mentioned some areas were on schedule to finish harvesting cotton despite heavy rain from hurricane Nicholas. Peanuts mature reached 22 percent, down 7 points from the previous year but up 2 points from normal. In the South, some areas were irrigating peanuts. Rice harvested increased to 92 percent, down 6 points from the previous year and down 4 points from normal. Along the Upper Coast, some reporters indicated losses in unharvested rice due to high winds from the hurricane. Sorghum harvested reached 73 percent, down 7 points from the previous year but unchanged from normal. Soybeans harvested reached 50 percent, up 1 point from the previous year and up 2 points from normal.

Livestock, Range and Pasture: Livestock were reported to be in good condition and feeding on hay where pastures are dry. In the North East, the Edwards Plateau, and the South, some reporters mentioned increased supplemental feeding for cattle. The pasture and range condition was rated mostly poor, fair, and good.

Soil Moisture and Days Suitable by District

District	Topsoil Moisture Condition by District				Subsoil Moisture Condition by District				Days Suitable for Fieldwork
	Percentage of Acreage				Percentage of Acreage				
	Very Short	Short	Adequate	Surplus	Very Short	Short	Adequate	Surplus	
11	28	56	15	1	17	53	30	0	7.0
12	0	48	52	0	0	27	73	0	7.0
21	29	47	24	0	24	42	34	0	6.1
22	36	54	10	0	25	59	16	0	6.7
30	19	55	26	0	12	59	29	0	6.4
40	17	62	21	0	20	49	31	0	6.9
51	19	46	31	4	28	40	25	7	6.9
52	9	41	48	2	9	41	50	0	6.3
60	34	38	28	0	34	40	26	0	6.5
70	30	36	33	1	11	33	55	1	6.5
81	5	49	43	3	1	43	54	2	6.8
82	0	34	66	0	0	23	77	0	5.4
90	11	37	28	24	10	19	11	60	4.7
96	25	55	19	1	26	47	27	0	6.5
97	13	50	34	3	4	20	74	2	5.4
State	18	51	29	2	14	42	41	3	6.6

Crop Progress

Stage	Percent of Acreage			
	Current Week	Previous Week	Previous Year	5 Year Average
Corn				
Dented	98	93	99	96
Mature	85	75	83	78
Harvested	70	63	69	66
Cotton				
Bolls Opening	42	33	52	43
Harvested	19	11	19	17
Peanuts				
Mature	22	16	29	20
Rice				
Harvested	92	89	98	96
Sorghum				
Coloring	95	91	95	92
Mature	83	80	87	82
Harvested	73	69	80	73
Soybeans				
Dropping Leaves	78	69	70	71
Harvested	50	41	49	48
Sunflowers				
Harvested	63	59	59	55
Winter Wheat				
Planted	20	9	16	17
Oats				
Planted	10	(NA)	9	8

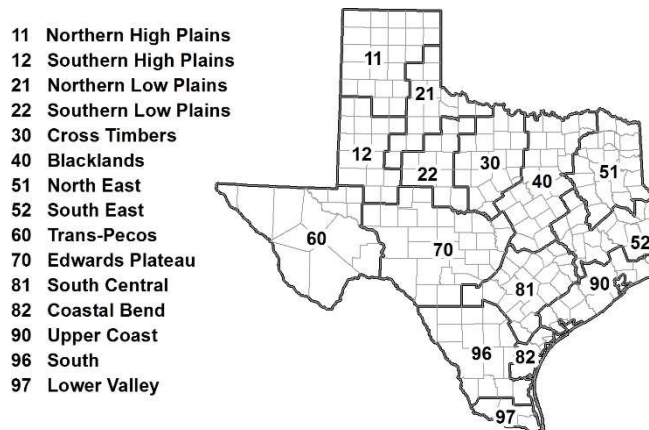
(NA) Not available.

Crop Condition

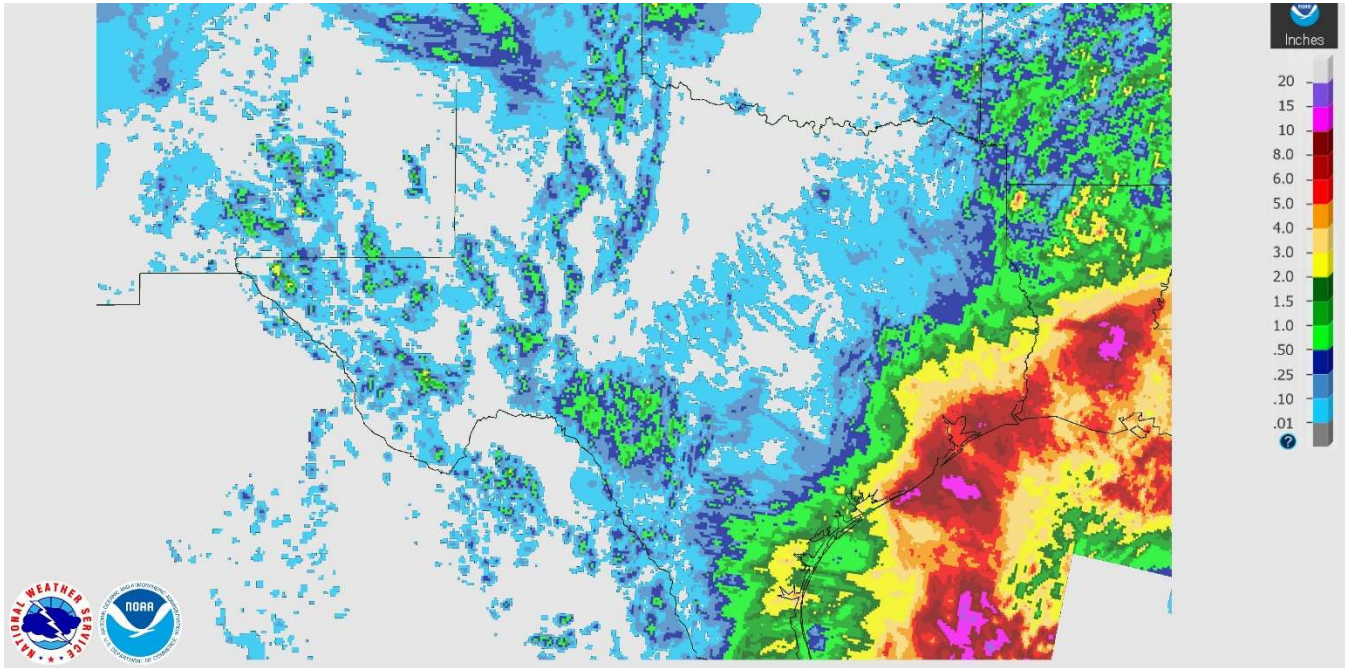
Crop	Percent of Acreage					Index ¹	
	Excellent	Good	Fair	Poor	Very Poor	2021	2020
Corn	17	44	29	9	1	78	67
Cotton	15	44	32	8	1	77	53
Peanuts	1	48	50	1	0	75	68
Rice	16	58	24	1	1	85	88
Sorghum	15	48	28	8	1	79	67
Soybeans	5	45	40	7	3	72	82
Range and Pasture	4	24	34	24	14	53	58

¹ The formula for the condition index is $I = (5V + 25P + 60F + 90G + 110E)/100$ where I = crop condition index and V, P, F, G, E = percentage of crop rated very poor, poor, fair, good, excellent.

Texas Agricultural Districts

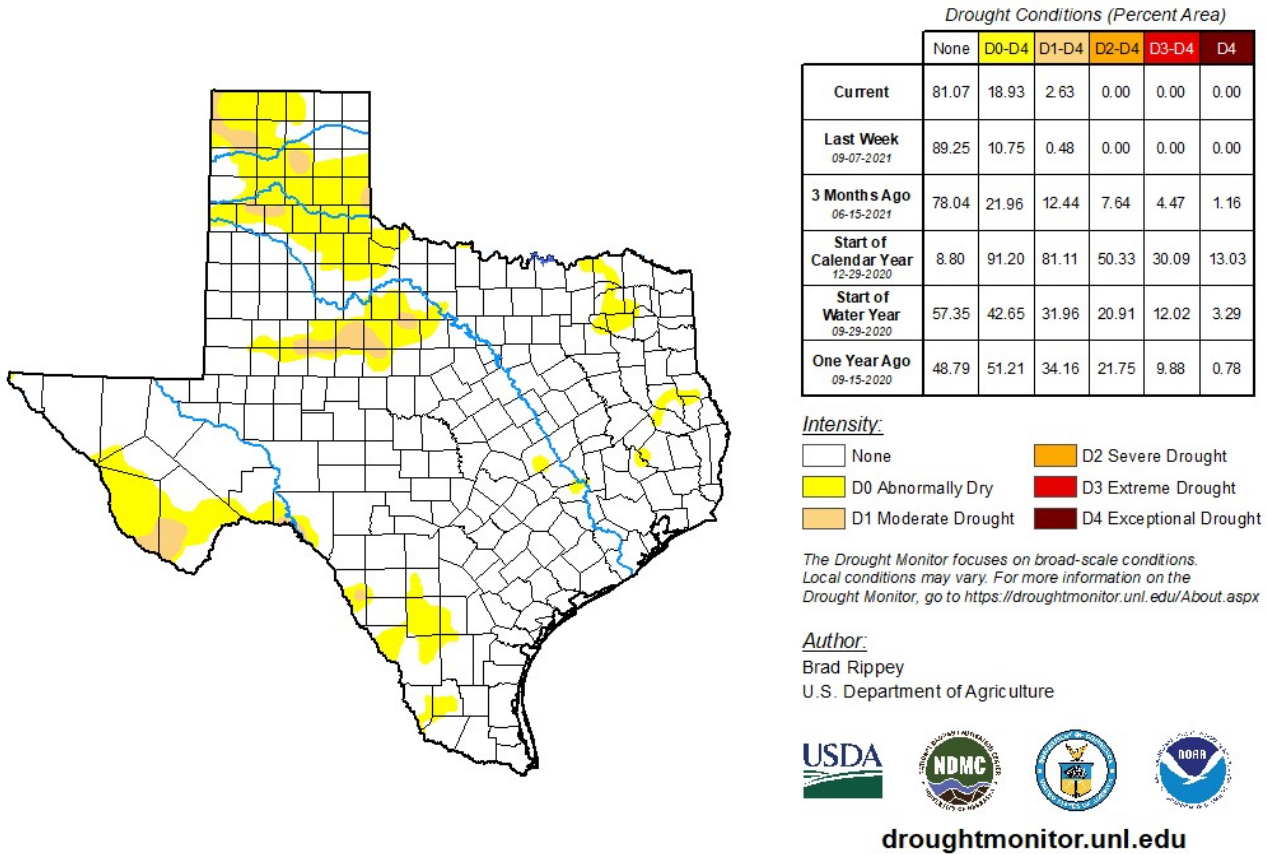


Seven Day Observed Regional Precipitation, September 19, 2021.



Source: National Weather Service, www.nws.noaa.gov

Drought Monitor, Valid September 14, 2021.



Source: National Drought Mitigation Center, a partnership with USDA, U.S. Department of Commerce/NOAA, <http://droughtmonitor.unl.edu>