



Texas Crop Progress and Condition

Southern Plains Regional Field Office
Post Office Box 70 Austin, Texas 78767
(800) 626-3142 · FAX (855) 270-2725 · www.nass.usda.gov/tx

Issue: TX-CW3921

Weekly Summary for October 11-October 17

Released: October 18

Much of the Eastern part of the state received more than 1.0 inch of precipitation with a concentration of 5.0-15.0 inches in South Central Texas. The High Plains and the Trans-Pecos received from trace amounts to 1.0 inch of precipitation. There was an average of 5.4 days suitable for fieldwork.

Small Grains: Winter wheat emerged increased to 39 percent, unchanged from the previous year and unchanged from normal. Oats emerged reached 28 percent, up 1 point from the previous year but unchanged from normal.

Row Crops: Corn harvested increased to 90 percent, up 6 points from the previous year and up 9 points from normal. Cotton bolls opening reached 83 percent, down 9 points from the previous year and down 1 point from normal. Cotton harvested reached 35 percent, down 6 points from the previous year but up 4 points from normal. Peanuts mature reached 56 percent, up 7 points from the previous year and up 8 points from normal. Peanuts harvested reached 24 percent, up 1 point from the previous year but down 2 points from normal. Sorghum harvested reached 92 percent, unchanged from the previous year but up 9 points from normal. Soybeans harvested reached 77 percent, up 2 points from the previous year and up 3 points from normal.

Livestock, Range and Pasture: Livestock were reported to be in good condition throughout the state. Calving was reported in some areas of the Edwards Plateau and the Coastal Bend. Supplemental feeding continued in various areas across the state. Pasture and range condition was rated mostly fair to good.

Crop Progress

Stage	Percent of Acreage			
	Current Week	Previous Week	Previous Year	5 Year Average
Corn				
Harvested	90	88	84	81
Cotton				
Bolls Opening	83	72	92	84
Harvested	35	29	41	31
Peanuts				
Mature	56	52	49	48
Harvested	24	19	23	22
Sorghum				
Harvested	92	88	92	83
Soybeans				
Harvested	77	74	75	74
Sunflowers				
Harvested	78	75	77	71
Winter Wheat				
Planted	64	54	63	64
Emerged	39	31	39	39
Oats				
Planted	61	44	62	61
Emerged	28	16	27	28

(NA) Not available.

Crop Condition

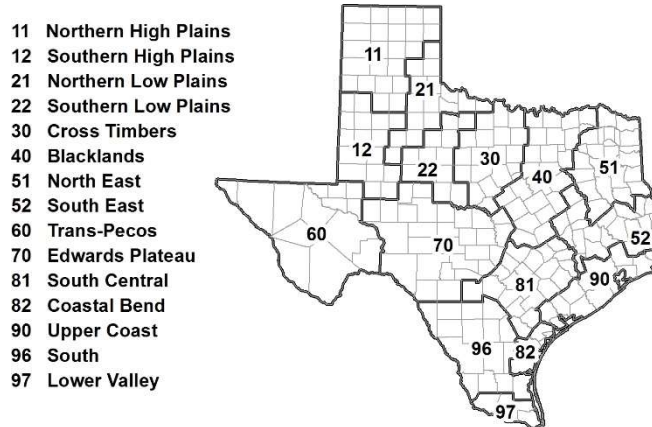
Crop	Percent of Acreage					Index ¹	
	Excellent	Good	Fair	Poor	Very Poor	2021	2020
Corn	17	44	29	9	1	78	67
Cotton	11	50	36	2	1	79	50
Peanuts	18	58	23	1	0	86	75
Sorghum	15	48	28	8	1	79	67
Soybeans	5	45	40	7	3	72	81
Range and Pasture	7	27	34	23	9	59	51

¹ The formula for the condition index is $I = (5V + 25P + 60F + 90G + 110E)/100$ where I = crop condition index and V, P, F, G, E = percentage of crop rated very poor, poor, fair, good, excellent.

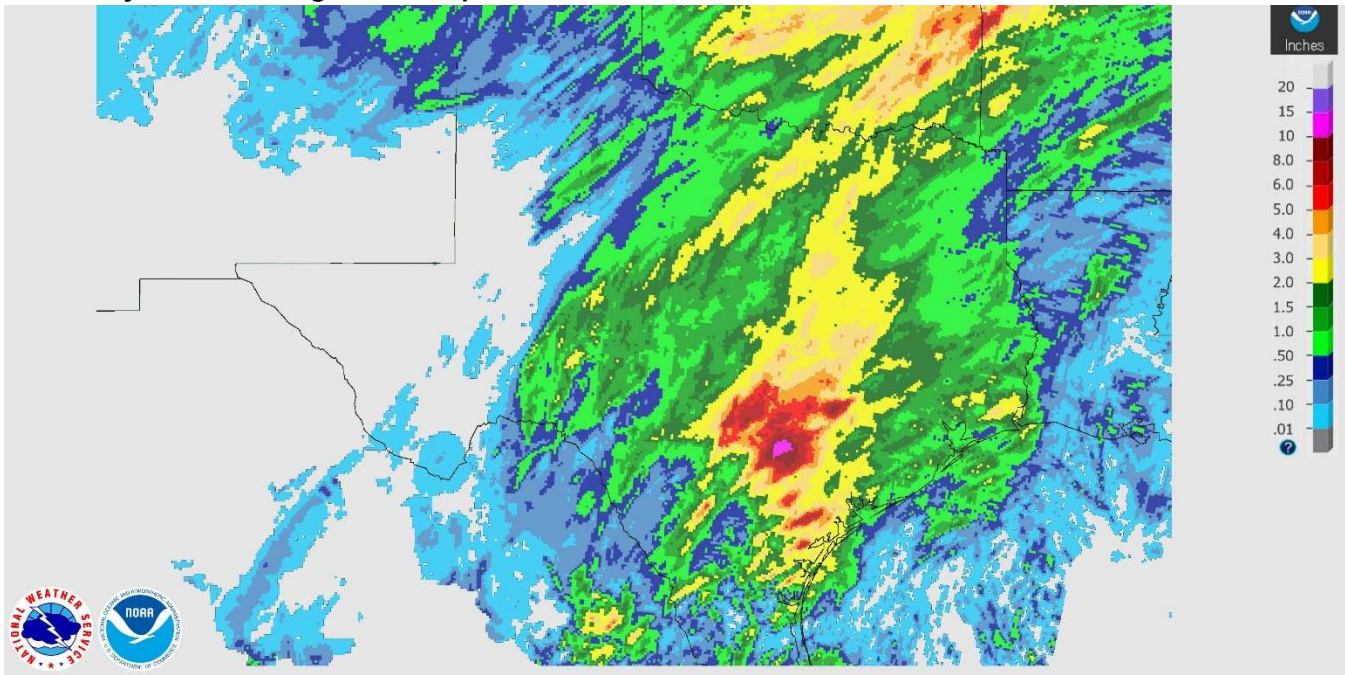
Soil Moisture and Days Suitable by District

District	Topsoil Moisture Condition by District				Subsoil Moisture Condition by District				Days Suitable for Fieldwork
	Percentage of Acreage				Percentage of Acreage				
	Very Short	Short	Adequate	Surplus	Very Short	Short	Adequate	Surplus	
11	35	30	35	0	30	55	15	0	6.1
12	15	61	24	0	15	57	28	0	6.6
21	13	47	40	0	17	43	40	0	4.9
22	42	44	14	0	37	44	19	0	6.1
30	7	38	45	10	10	40	46	4	4.9
40	8	20	48	24	11	24	46	19	3.9
51	27	42	30	1	43	36	21	0	7.0
52	1	22	35	42	2	30	53	15	5.3
60	19	23	53	5	19	23	53	5	6.3
70	0	6	93	1	1	31	68	0	5.0
81	0	7	90	3	0	10	87	3	5.2
82	0	0	92	8	0	0	92	8	1.5
90	0	0	44	56	0	9	49	42	2.3
96	12	22	66	0	6	43	50	1	5.1
97	19	38	39	4	3	16	78	3	7.0
State	18	33	41	8	17	40	38	5	5.4

Texas Agricultural Districts

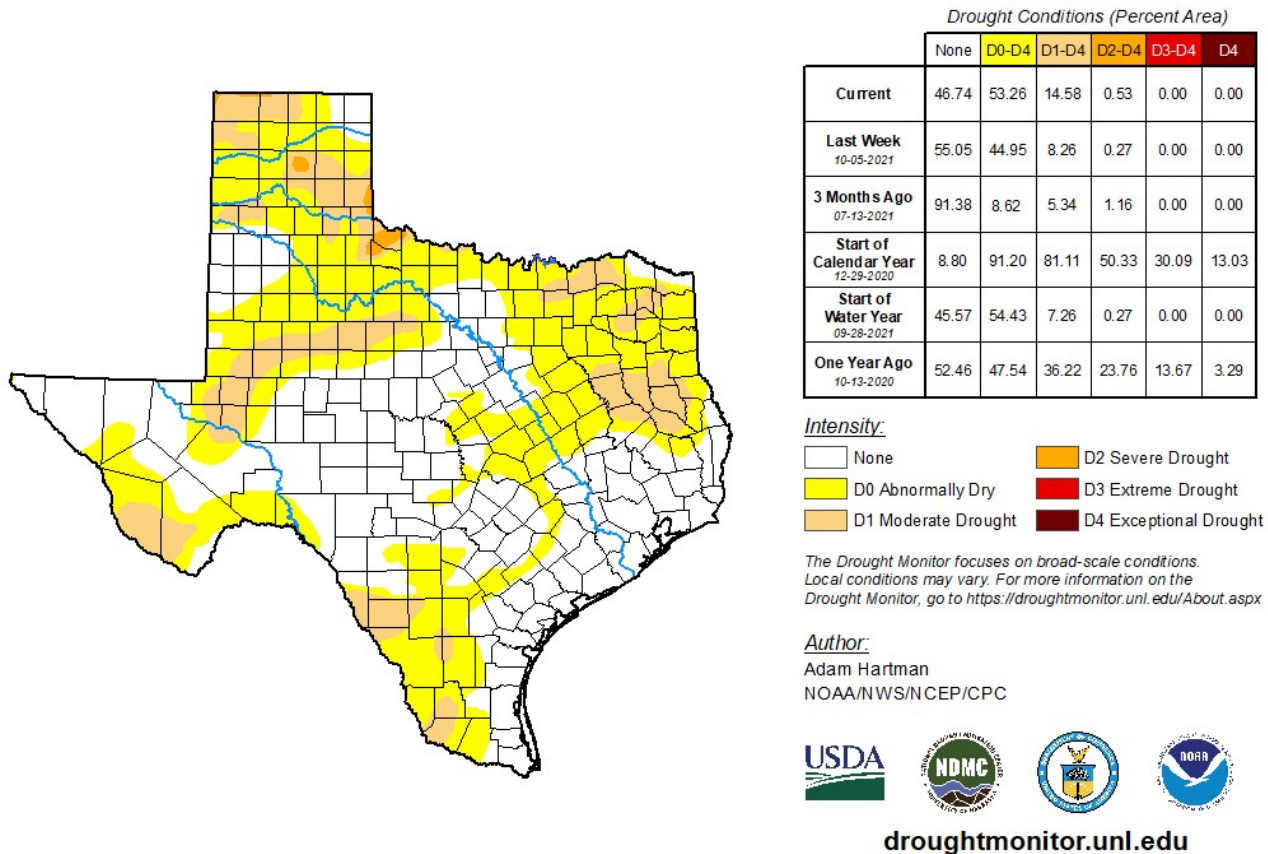


Seven Day Observed Regional Precipitation, October 17, 2021.



Source: National Weather Service, www.nws.noaa.gov

Drought Monitor, Valid October 12, 2021.



Source: National Drought Mitigation Center, a partnership with USDA, U.S. Department of Commerce/NOAA, <http://droughtmonitor.unl.edu>