



# Texas Crop Progress and Condition

Southern Plains Regional Field Office  
Post Office Box 70 Austin, Texas 78767  
(800) 626-3142 · FAX (855) 270-2725 · www.nass.usda.gov/tx

**Issue: TX-CW4221**

**Weekly Summary for November 1-November 7**

**Released: November 8**

Most of the state received from trace amounts to upwards of 3.0 inches of precipitation. Areas of South Texas received up to 6.0 inches. There was an average of 5.6 days suitable for fieldwork.

**Small Grains:** Small grains continued to progress in areas of the Cross Timbers and Edwards Plateau, while some areas in the Blacklands halted wheat progress due to standing water. A flush of army worms was reported in areas of the Blacklands and North East Texas. Winter wheat was in need of rain in most areas of the High and Low Plains.

**Row Crops:** Cotton harvest continued in areas of the High and Low Plains and was nearly complete in the Upper Coast and the Blacklands. Wet soil conditions halted cotton and ratoon rice harvests in areas of the Upper Coast and cotton and pecan harvests in areas of the Edwards Plateau. Peanuts harvested reached 59 percent, unchanged from the previous year but down 1 point from normal. Soybeans harvested reached 93 percent, up 6 points from the previous year and up 7 points from normal.

**Fruit, Vegetable and Specialty Crops:** Fields were prepared for winter garden vegetables in some areas of South Texas. Vegetables and citrus benefited from the rainfall and sugar cane harvest continued in areas of the Lower Valley.

**Livestock, Range and Pasture:** Supplemental feeding continued in various areas across the state. Pastures were reported in good condition in areas of Central Texas and excellent in areas of the Coastal Bend. Pasture conditions benefited from the rain in areas of East Texas. Range and pasture condition was rated mostly fair to good.

### Crop Progress

Stage	Percent of Acreage			
	Current Week	Previous Week	Previous Year	5 Year Average
<b>Cotton</b>				
Bolls Opening	97	93	99	95
Harvested	51	45	61	47
<b>Peanuts</b>				
Mature	71	67	71	70
Harvested	59	48	59	60
<b>Soybeans</b>				
Harvested	93	90	87	86
<b>Sunflowers</b>				
Harvested	92	89	88	83
<b>Winter Wheat</b>				
Planted	84	79	81	82
Emerged	64	56	64	67
<b>Oats</b>				
Planted	90	84	87	88
Emerged	67	53	64	67

(NA) Not available.

### Crop Condition

Crop	Percent of Acreage					Index <sup>1</sup>	
	Excellent	Good	Fair	Poor	Very Poor	2021	2020
Cotton	15	43	37	4	1	78	49
Peanuts	18	58	23	1	0	86	69
Soybeans	5	45	40	7	3	72	81
Wheat	2	21	34	22	21	48	-
Oats	4	29	35	24	8	58	-
Range and Pasture	6	27	35	19	13	-	-

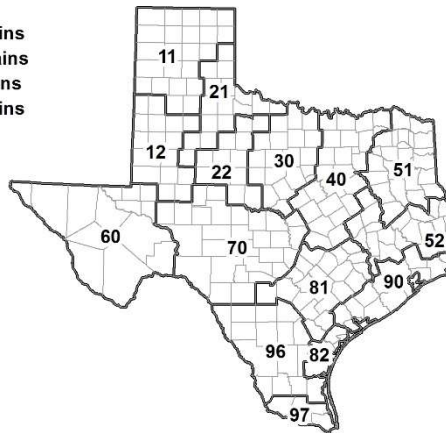
<sup>1</sup> The formula for the condition index is  $I = (5V + 25P + 60F + 90G + 110E)/100$  where I = crop condition index and V, P, F, G, E = percentage of crop rated very poor, poor, fair, good, excellent.

### Soil Moisture and Days Suitable by District

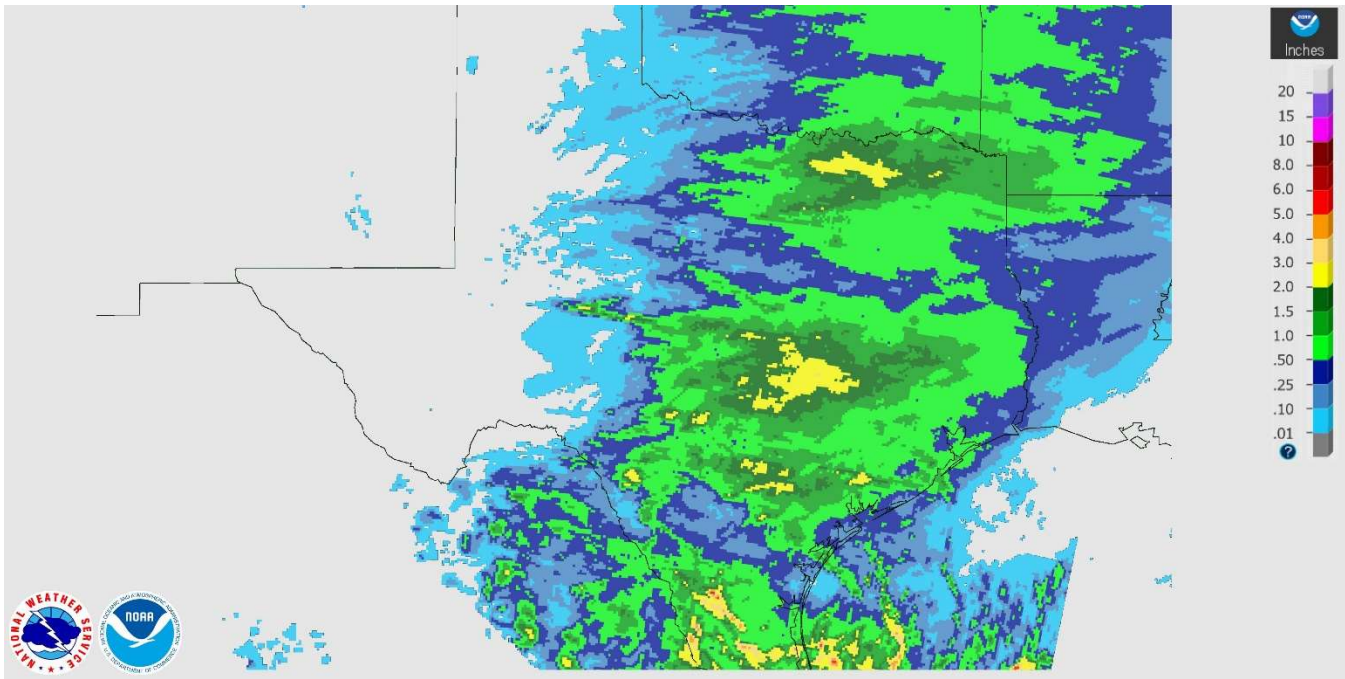
District	Topsoil Moisture Condition by District				Subsoil Moisture Condition by District				Days Suitable for Fieldwork
	Percentage of Acreage				Percentage of Acreage				
	Very Short	Short	Adequate	Surplus	Very Short	Short	Adequate	Surplus	
11	42	45	13	0	42	26	32	0	6.4
12	0	93	7	0	25	62	13	0	6.1
21	26	52	22	0	40	25	35	0	6.6
22	36	37	27	0	42	47	11	0	4.9
30	3	32	58	7	5	35	56	4	4.6
40	7	26	59	8	9	24	65	2	4.5
51	11	43	43	3	14	40	43	3	6.1
52	1	26	71	2	1	26	71	2	6.5
60	24	35	38	3	24	36	37	3	5.9
70	20	15	53	12	19	26	43	12	5.7
81	0	7	88	5	0	10	85	5	5.9
82	0	11	81	8	0	2	90	8	5.4
90	1	4	69	26	2	4	44	50	3.2
96	10	26	61	3	8	50	41	1	5.9
97	4	19	69	8	3	11	82	4	6.1
State	16	43	37	4	22	33	41	4	5.6

### Texas Agricultural Districts

- 11 Northern High Plains
- 12 Southern High Plains
- 21 Northern Low Plains
- 22 Southern Low Plains
- 30 Cross Timbers
- 40 Blacklands
- 51 North East
- 52 South East
- 60 Trans-Pecos
- 70 Edwards Plateau
- 81 South Central
- 82 Coastal Bend
- 90 Upper Coast
- 96 South
- 97 Lower Valley

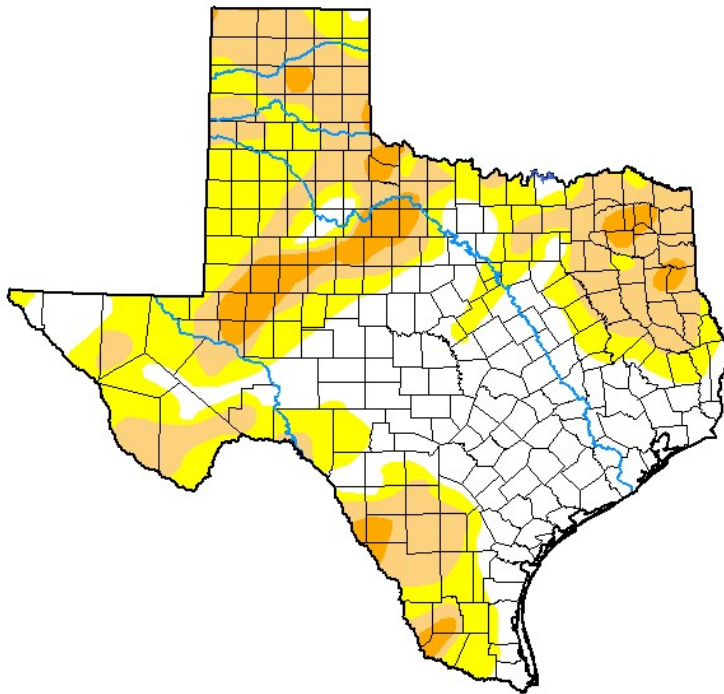


**Seven Day Observed Regional Precipitation, November 7, 2021.**



Source: National Weather Service, [www.nws.noaa.gov](http://www.nws.noaa.gov)

**Drought Monitor, Valid November 2, 2021.**



*Drought Conditions (Percent Area)*

	None	D0-D4	D1-D4	D2-D4	D3-D4	D4
<b>Current</b>	38.20	61.80	32.90	6.44	0.00	0.00
<b>Last Week</b> <i>10-26-2021</i>	44.76	55.24	23.92	3.47	0.00	0.00
<b>3 Months Ago</b> <i>08-03-2021</i>	94.72	5.28	1.10	0.00	0.00	0.00
<b>Start of Calendar Year</b> <i>12-29-2020</i>	8.80	91.20	81.11	50.33	30.09	13.03
<b>Start of Water Year</b> <i>09-28-2021</i>	45.57	54.43	7.26	0.27	0.00	0.00
<b>One Year Ago</b> <i>11-03-2020</i>	32.17	67.83	45.52	25.00	13.54	3.93

Intensity:

- None
- D0 Abnormally Dry
- D1 Moderate Drought
- D2 Severe Drought
- D3 Extreme Drought
- D4 Exceptional Drought

*The Drought Monitor focuses on broad-scale conditions. Local conditions may vary. For more information on the Drought Monitor, go to <https://droughtmonitor.unl.edu/About.aspx>*

Author:

Adam Hartman  
NOAA/NWS/NCEP/CPC



[droughtmonitor.unl.edu](http://droughtmonitor.unl.edu)

Source: National Drought Mitigation Center, a partnership with USDA, U.S. Department of Commerce/NOAA, <http://droughtmonitor.unl.edu>