



Texas Crop Progress and Condition

Southern Plains Regional Field Office
Post Office Box 70 Austin, Texas 78767
(800) 626-3142 · FAX (855) 270-2725 · www.nass.usda.gov/tx

Issue: TX-CW4321

Weekly Summary for November 8-November 14

Released: November 15

Most of the state received from trace amounts to upwards of 0.01 inches of precipitation. Areas of the Blacklands, East Texas, the Upper Coast, and the Lower Valley received up to 2.0 inches. There was an average of 6.1 days suitable for fieldwork.

Small Grains: Small grains continued to progress well in areas of the Cross Timbers and the Blacklands. Winter wheat was still in need of rain in most areas of the High and Low Plains. Winter wheat planted reached 89 percent, up 4 points from the previous year and up 3 points from normal. Oats planted reached 93 percent, up 2 points from the previous year and up 1 point from normal.

Row Crops: Cotton harvest continued in the High and Low Plains and was nearly completed in South East Texas as farmers worked on shredding fields. Meanwhile, harvest continued in the Edwards Plateau while some producers worked on spraying cotton fields to prep for harvest. Peanuts harvested reached 68 percent, up 2 points from the previous year but down 3 points from normal. Soybeans harvested reached 98 percent, up 7 points from the previous year and up 9 points from normal. Sunflowers harvested reached 98 percent, up 7 points from the previous year and up 12 points from normal.

Fruit, Vegetable and Specialty Crops: Pecan harvest in the Cross Timbers was progressing nicely. Meanwhile, some pecans were harvested in the Edwards Plateau while others were still waiting on a good freeze before completing harvest. Cabbage and spinach were progressing well in the Edwards Plateau and South Texas. Citrus was getting closer to harvest in the Lower Valley as sugarcane harvest continued.

Livestock, Range and Pasture: Supplemental feeding continued in the Blacklands and South Texas. Pastures were reported in better condition than normal in various areas of the state, but more moisture was needed in the High and Low Plains as cooler temperatures and shorter daylight increase. Range and pasture condition was rated mostly fair.

Crop Progress

Stage	Percent of Acreage			
	Current Week	Previous Week	Previous Year	5 Year Average
Cotton				
Harvested	60	51	67	53
Peanuts				
Mature	77	71	78	76
Harvested	68	59	66	71
Soybeans				
Harvested	98	93	91	89
Sunflowers				
Harvested	98	92	91	86
Winter Wheat				
Planted	89	84	85	86
Emerged	71	63	69	72
Oats				
Planted	93	90	91	92
Emerged	77	67	73	76

Crop Condition

Crop	Percent of Acreage					Index ¹	
	Excellent	Good	Fair	Poor	Very Poor	2021	2020
Cotton	15	43	37	4	1	78	49
Peanuts	18	58	23	1	0	86	69
Soybeans	5	45	40	7	3	72	81
Wheat	2	22	38	25	13	52	58
Oats	1	28	34	29	8	54	--
Range and Pasture	4	24	36	24	12	--	--

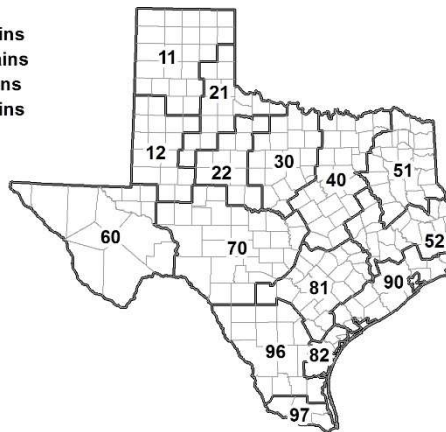
¹ The formula for the condition index is $I = (5V + 25P + 60F + 90G + 110E)/100$ where I = crop condition index and V, P, F, G, E = percentage of crop rated very poor, poor, fair, good, excellent.

Soil Moisture and Days Suitable by District

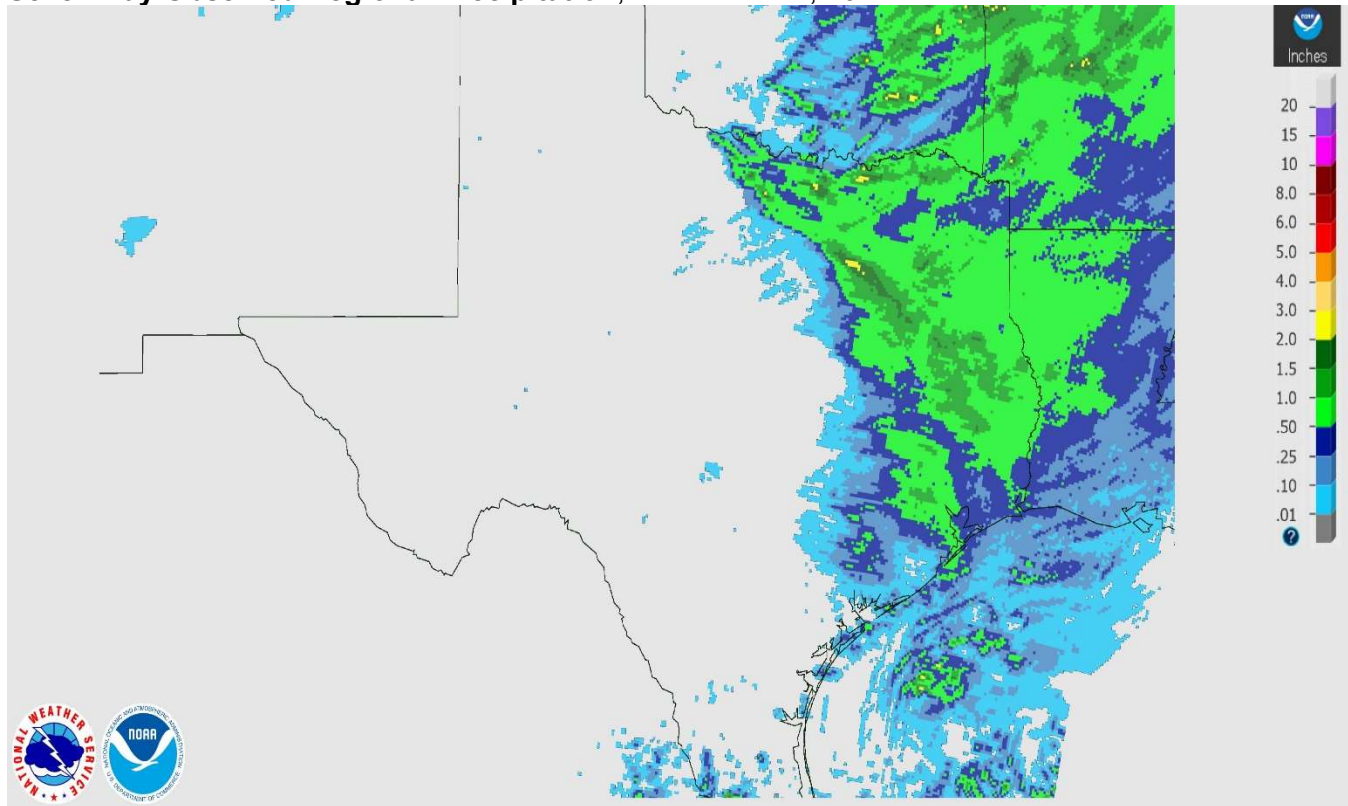
District	Topsoil Moisture Condition by District				Subsoil Moisture Condition by District				Days Suitable for Fieldwork
	Percentage of Acreage				Percentage of Acreage				
	Very Short	Short	Adequate	Surplus	Very Short	Short	Adequate	Surplus	
11	42	45	13	0	42	26	32	0	6.4
12	0	93	7	0	25	62	13	0	6.1
21	16	58	26	0	22	53	25	0	6.9
22	57	36	7	0	49	40	11	0	6.4
30	4	38	53	5	5	44	49	2	6.1
40	12	25	53	10	11	25	63	1	5.3
51	17	41	40	2	14	45	33	8	6.1
52	3	41	56	0	4	55	41	0	6.8
60	35	36	27	2	35	36	27	2	6.1
70	20	10	58	12	20	24	44	12	5.7
81	1	30	67	2	0	20	78	2	5.9
82	0	11	81	8	0	1	90	9	5.4
90	1	7	76	16	2	4	50	44	5.3
96	13	40	47	0	11	52	37	0	6.3
97	6	20	69	5	2	5	89	4	5.2
State	18	46	33	3	22	36	38	4	6.1

Texas Agricultural Districts

- 11 Northern High Plains
- 12 Southern High Plains
- 21 Northern Low Plains
- 22 Southern Low Plains
- 30 Cross Timbers
- 40 Blacklands
- 51 North East
- 52 South East
- 60 Trans-Pecos
- 70 Edwards Plateau
- 81 South Central
- 82 Coastal Bend
- 90 Upper Coast
- 96 South
- 97 Lower Valley

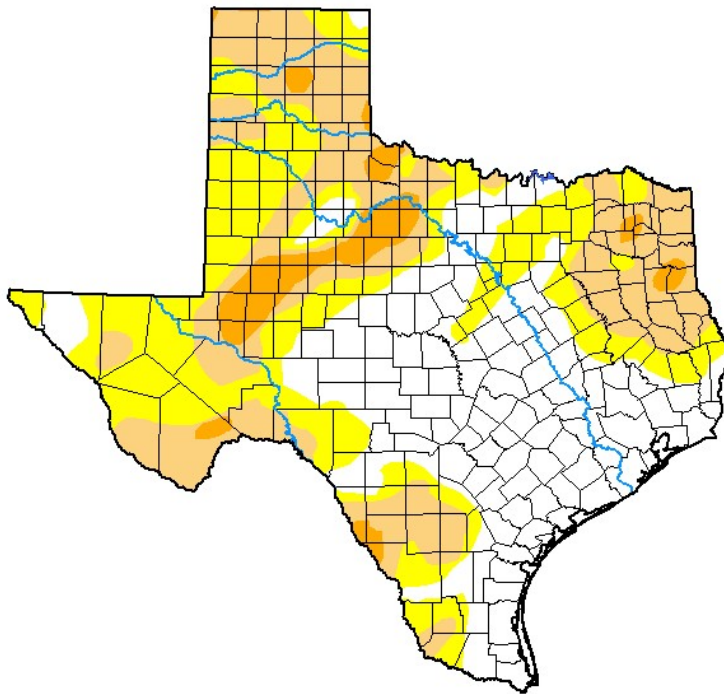


Seven Day Observed Regional Precipitation, November 14, 2021.



Source: National Weather Service, www.nws.noaa.gov.

Drought Monitor, Valid November 9, 2021.



Drought Conditions (Percent Area)

	None	D0-D4	D1-D4	D2-D4	D3-D4	D4
Current	38.58	61.42	32.22	5.62	0.00	0.00
Last Week <i>11-02-2021</i>	38.20	61.80	32.90	6.44	0.00	0.00
3 Months Ago <i>08-10-2021</i>	92.04	7.96	1.35	0.00	0.00	0.00
Start of Calendar Year <i>12-29-2020</i>	8.80	91.20	81.11	50.33	30.09	13.03
Start of Water Year <i>09-28-2021</i>	45.57	54.43	7.26	0.27	0.00	0.00
One Year Ago <i>11-10-2020</i>	15.71	84.29	56.86	30.67	19.33	8.61

Intensity:

- None
- D0 Abnormally Dry
- D1 Moderate Drought
- D2 Severe Drought
- D3 Extreme Drought
- D4 Exceptional Drought

The Drought Monitor focuses on broad-scale conditions. Local conditions may vary. For more information on the Drought Monitor, go to <https://droughtmonitor.unl.edu/About.aspx>

Author:

Curtis Riganti
National Drought Mitigation Center



droughtmonitor.unl.edu

Source: National Drought Mitigation Center, a partnership with USDA, U.S. Department of Commerce/NOAA, <http://droughtmonitor.unl.edu>.