



Texas Crop Progress and Condition

Southern Plains Regional Field Office
Post Office Box 70 Austin, Texas 78767
(800) 626-3142 · FAX (855) 270-2725 · www.nass.usda.gov/tx

Issue: TX-CW0622

Weekly Summary for February 21 – February 27

Released: February 28, 2022

Parts of the state received from trace amounts to upwards of 1.0 of an inch of precipitation. Isolated areas in the Cross Timbers and Northeast Texas received up to 2.0 inches. Drought conditions range from none to extremely dry with the Northern and Southern High Plains being the driest. There was an average of 5.1 days suitable for fieldwork.

Small Grains: Winter wheat conditions in most areas of the state are rated very poor to poor. Winter wheat headed reached 13 percent, up 8 points from the previous year and 7 points above normal. Oats headed reached 14 percent, up 4 points from the previous year and 9 points above normal.

Row Crops: In the Cross Timbers, corn planting has been delayed a week or more due to cold temperatures. But planting has begun with some of the crop already germinated in the Coastal Bend.

Fruit, Vegetable and Specialty Crops: In the Edwards Plateau, recent freezes have allowed for fruit trees to get needed chill hours for fruit production.

Livestock, Range and Pasture: Supplemental feeding continued across the state. Topsoil and subsoil conditions are very short due to the lack of moisture. Range and pasture conditions continue to decline, especially for the Northern and Southern Plains areas. Range and pasture condition was rated 69 percent very poor to poor.

Crop Progress

Stage	Percent of Acreage			
	Current Week	Previous Week	Previous Year	5 Year Average
Corn				
Planted	5	(N/A)	3	6
Winter Wheat				
Headed	13	12	5	6
Oats				
Headed	14	12	10	5

Crop Condition

Crop	Percent of Acreage					Index ¹	
	Excellent	Good	Fair	Poor	Very Poor	2022	2021
Wheat	0	8	17	21	54	25	56
Oats	1	8	22	18	51	29	26
Range and Pasture	1	8	22	32	37	31	40

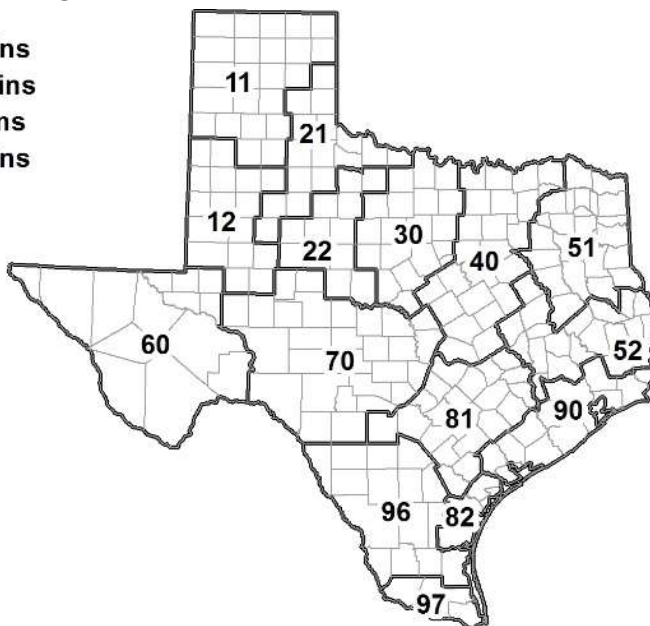
¹ The formula for the condition index is $I = (5V + 25P + 60F + 90G + 110E)/100$ where I = crop condition index and V, P, F, G, E = percentage of crop rated very poor, poor, fair, good, excellent.

Soil Moisture and Days Suitable by District

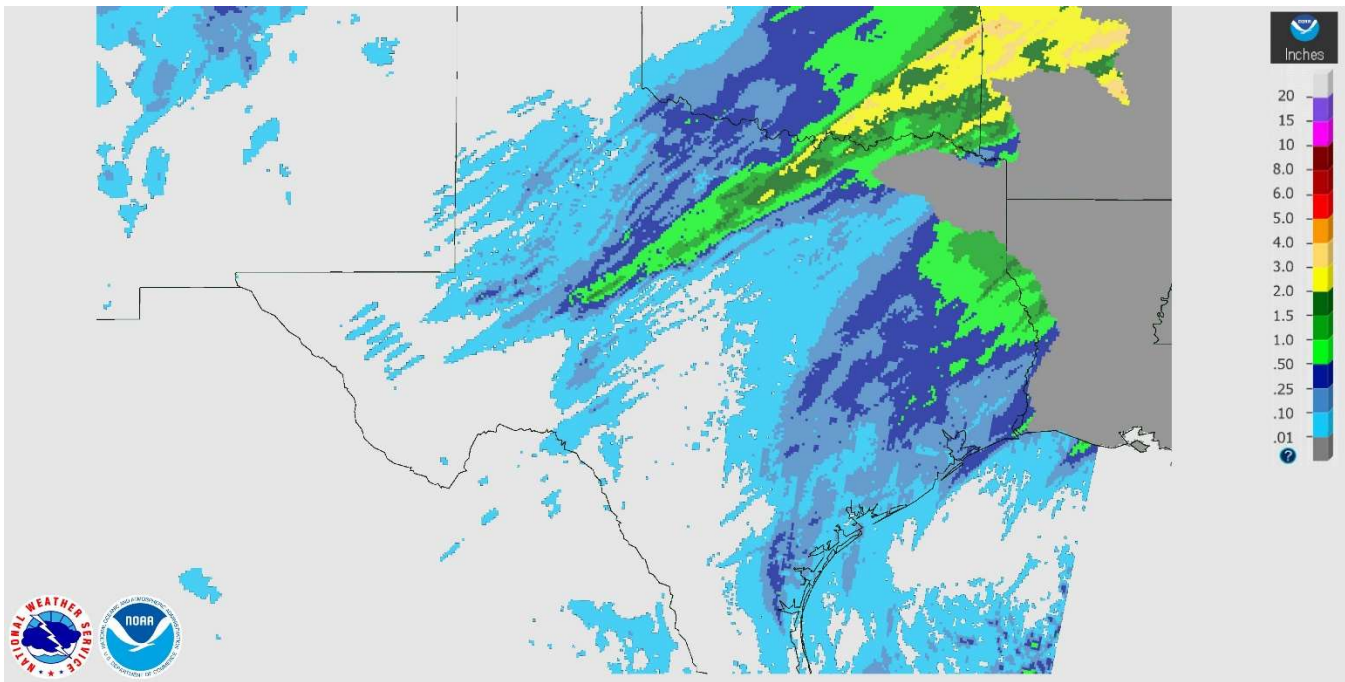
District	Topsoil Moisture Condition by District				Subsoil Moisture Condition by District				Days Suitable for Fieldwork
	Percentage of Acreage				Percentage of Acreage				
	Very Short	Short	Adequate	Surplus	Very Short	Short	Adequate	Surplus	
11	81	19	0	0	79	21	0	0	6.8
12	68	18	14	0	68	18	14	0	5.6
21	39	56	5	0	41	56	3	0	4.0
22	77	18	5	0	75	22	3	0	4.6
30	32	44	20	4	44	43	13	0	3.7
40	23	28	43	6	28	27	43	2	3.4
51	18	38	42	2	30	39	30	1	6.2
52	1	30	67	2	1	35	63	1	5.4
60	26	31	43	0	25	26	49	0	4.9
70	81	17	2	0	62	33	5	0	5.2
81	3	72	25	0	3	58	39	0	4.5
82	21	24	55	0	20	26	54	0	3.9
90	1	6	60	33	1	7	49	43	4.6
96	50	37	13	0	37	57	6	0	6.7
97	6	15	77	2	4	6	88	2	4.0
State	49	27	21	3	48	28	21	3	5.1

Texas Agricultural Districts

- 11 Northern High Plains
- 12 Southern High Plains
- 21 Northern Low Plains
- 22 Southern Low Plains
- 30 Cross Timbers
- 40 Blacklands
- 51 North East
- 52 South East
- 60 Trans-Pecos
- 70 Edwards Plateau
- 81 South Central
- 82 Coastal Bend
- 90 Upper Coast
- 96 South
- 97 Lower Valley

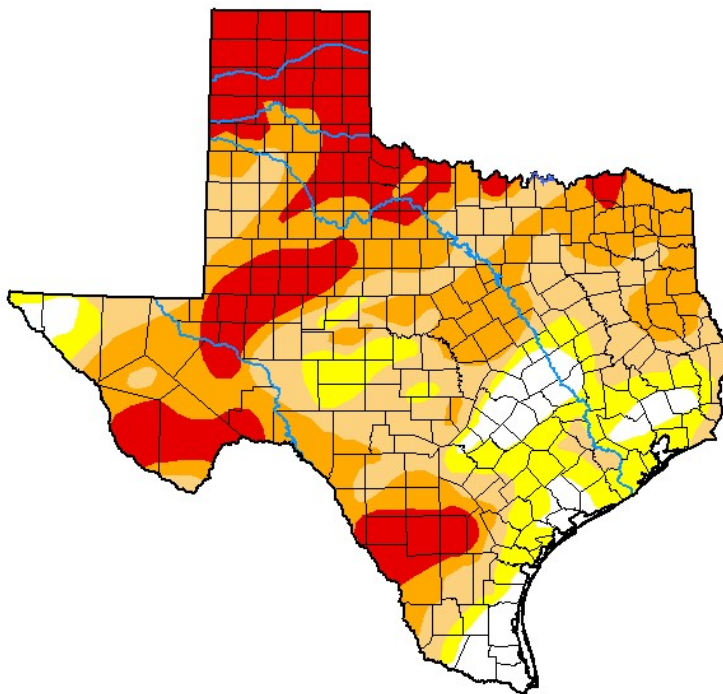


Seven Day Observed Regional Precipitation, February 27, 2022



Source: National Weather Service, www.nws.noaa.gov

Drought Monitor, Valid February 22, 2022.



Drought Conditions (Percent Area)

	None	D0-D4	D1-D4	D2-D4	D3-D4	D4
Current	7.67	92.33	79.06	52.89	22.44	0.00
Last Week <i>02-15-2022</i>	11.83	88.17	77.61	55.58	24.53	0.00
3 Months Ago <i>11-23-2021</i>	33.41	66.59	39.74	12.58	0.00	0.00
Start of Calendar Year <i>01-04-2022</i>	7.58	92.42	79.83	54.25	16.69	0.00
Start of Water Year <i>09-28-2021</i>	45.57	54.43	7.26	0.27	0.00	0.00
One Year Ago <i>02-23-2021</i>	24.20	75.80	50.66	28.18	16.29	4.27

Intensity:

- None
- D0 Abnormally Dry
- D1 Moderate Drought
- D2 Severe Drought
- D3 Extreme Drought
- D4 Exceptional Drought

The Drought Monitor focuses on broad-scale conditions. Local conditions may vary. For more information on the Drought Monitor, go to <https://droughtmonitor.unl.edu/About.aspx>

Author:

Brad Pugh
CPC/NOAA



droughtmonitor.unl.edu

Source: National Drought Mitigation Center, a partnership with USDA, U.S. Department of Commerce/NOAA, <http://droughtmonitor.unl.edu>