



Texas Crop Progress and Condition

Southern Plains Regional Field Office
Post Office Box 70 Austin, Texas 78767
(800) 626-3142 · FAX (855) 270-2725 · www.nass.usda.gov/tx

Issue: TX-CW0822

Weekly Summary for March 7 – March 13

Released: March 14, 2022

Parts of the state received from trace amounts to upwards of 0.25 of an inch of precipitation. Isolated areas in Southeast Texas received up to 2.00 inches. Drought conditions range from none to exceptionally dry with the Northern and Southern High Plains being the driest. There was an average of 5.9 days suitable for fieldwork.

Small Grains: Winter wheat condition was rated at 75 percent very poor to poor. Winter wheat headed reached 17 percent, up 8 points from the previous year and 9 points above normal. Oats headed reached 17 percent, up 4 points from the previous year and 8 points above normal.

Row Crops: In the Blacklands, corn planting has slowed due to the colder than normal weather. However, planting is progressing well in the South Central area.

Fruit, Vegetable and Specialty Crops: In the Lower Valley, fruits and vegetables look good and continue to be harvested.

Livestock, Range and Pasture: Supplemental feeding continued across the state. Topsoil and subsoil conditions are very short due to the lack of moisture. Range and pasture conditions continue to decline, especially for the Northern and Southern Plains areas. Range and pasture condition was rated 72 percent very poor to poor.

Crop Progress

| Stage | Percent of Acreage | | | |
|---------------------|--------------------|---------------|---------------|----------------|
| | Current Week | Previous Week | Previous Year | 5 Year Average |
| Corn | | | | |
| Planted | 27 | 18 | 24 | 26 |
| Sorghum | | | | |
| Planted | 18 | 10 | 19 | 21 |
| Winter Wheat | | | | |
| Headed | 17 | 15 | 9 | 8 |
| Oats | | | | |
| Headed | 17 | 15 | 13 | 9 |

Crop Condition

| Crop | Percent of Acreage | | | | | Index ¹ | |
|-------------------|--------------------|------|------|------|-----------|--------------------|------|
| | Excellent | Good | Fair | Poor | Very Poor | 2022 | 2021 |
| Wheat | 0 | 6 | 19 | 21 | 54 | 25 | 53 |
| Oats | 0 | 6 | 25 | 20 | 49 | 28 | 26 |
| Range and Pasture | 0 | 5 | 23 | 37 | 35 | 29 | 41 |

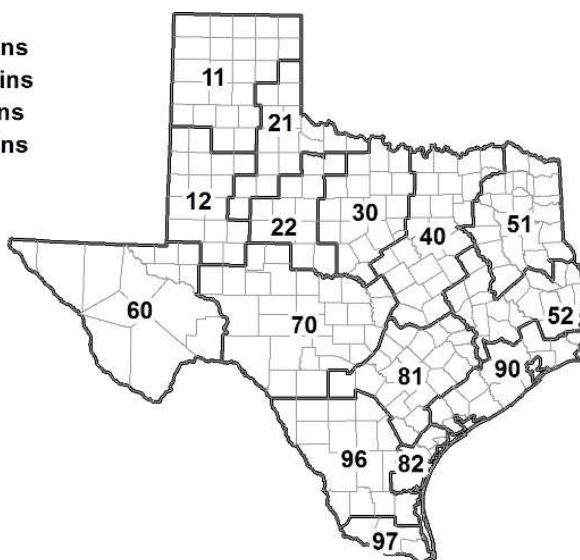
¹ The formula for the condition index is $I = (5V + 25P + 60F + 90G + 110E)/100$ where I = crop condition index and V, P, F, G, E = percentage of crop rated very poor, poor, fair, good, excellent.

Soil Moisture and Days Suitable by District

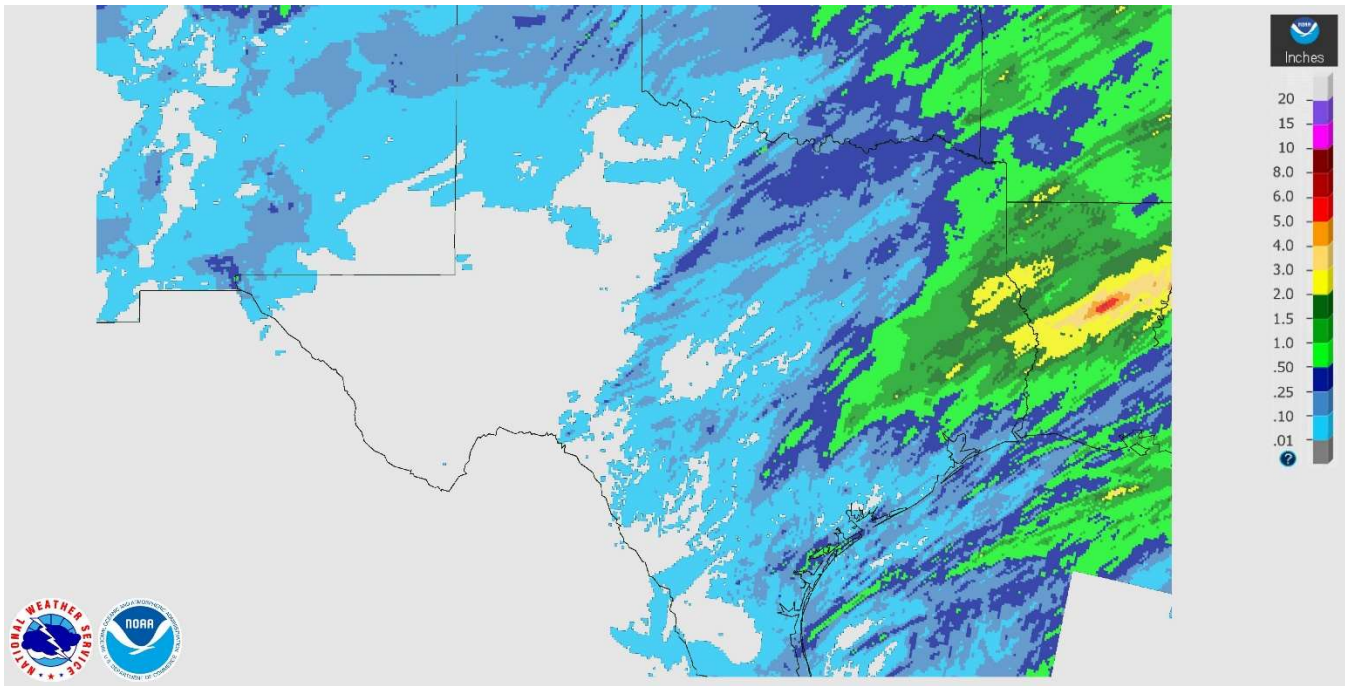
| District | Topsoil Moisture Condition by District | | | | Subsoil Moisture Condition by District | | | | Days Suitable for Fieldwork |
|----------|--|-------|----------|---------|--|-------|----------|---------|-----------------------------|
| | Percentage of Acreage | | | | Percentage of Acreage | | | | |
| | Very Short | Short | Adequate | Surplus | Very Short | Short | Adequate | Surplus | |
| 11 | 87 | 13 | 0 | 0 | 83 | 17 | 0 | 0 | 5.5 |
| 12 | 49 | 44 | 7 | 0 | 50 | 47 | 3 | 0 | 5.7 |
| 21 | 35 | 61 | 4 | 0 | 55 | 43 | 2 | 0 | 6.9 |
| 22 | 99 | 1 | 0 | 0 | 72 | 28 | 0 | 0 | 6.7 |
| 30 | 44 | 39 | 17 | 0 | 47 | 40 | 13 | 0 | 5.4 |
| 40 | 22 | 24 | 53 | 1 | 25 | 24 | 51 | 0 | 5.8 |
| 51 | 8 | 49 | 42 | 1 | 8 | 51 | 40 | 1 | 5.8 |
| 52 | 0 | 37 | 54 | 9 | 1 | 42 | 50 | 7 | 5.6 |
| 60 | 9 | 39 | 52 | 0 | 10 | 47 | 43 | 0 | 6.6 |
| 70 | 74 | 23 | 3 | 0 | 74 | 24 | 2 | 0 | 6.7 |
| 81 | 20 | 73 | 7 | 0 | 23 | 55 | 22 | 0 | 5.9 |
| 82 | 33 | 31 | 36 | 0 | 27 | 34 | 39 | 0 | 6.2 |
| 90 | 10 | 34 | 50 | 6 | 7 | 29 | 55 | 9 | 5.6 |
| 96 | 40 | 51 | 9 | 0 | 30 | 62 | 7 | 1 | 6.7 |
| 97 | 7 | 25 | 68 | 0 | 7 | 13 | 80 | 0 | 4.8 |
| State | 49 | 32 | 18 | 1 | 47 | 34 | 18 | 1 | 5.9 |

Texas Agricultural Districts

- 11 Northern High Plains
- 12 Southern High Plains
- 21 Northern Low Plains
- 22 Southern Low Plains
- 30 Cross Timbers
- 40 Blacklands
- 51 North East
- 52 South East
- 60 Trans-Pecos
- 70 Edwards Plateau
- 81 South Central
- 82 Coastal Bend
- 90 Upper Coast
- 96 South
- 97 Lower Valley

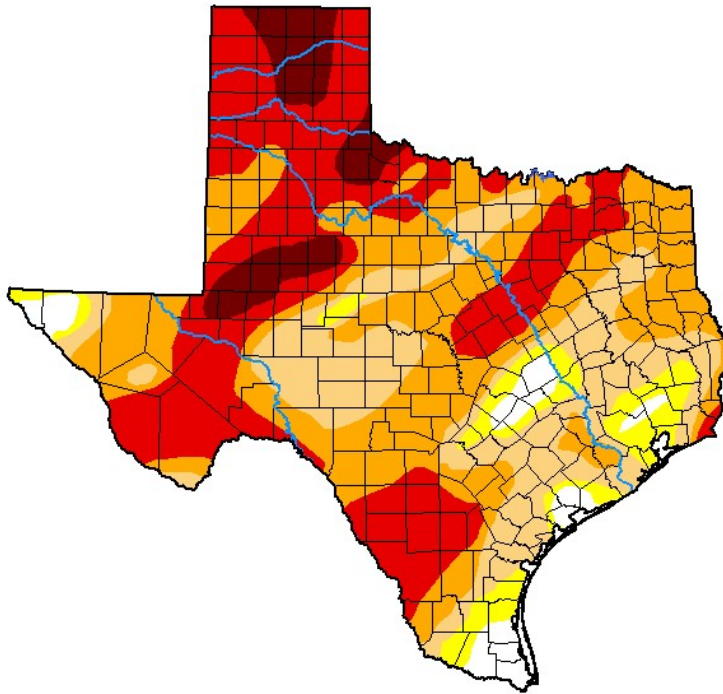


Seven Day Observed Regional Precipitation, March 13, 2022



Source: National Weather Service, www.nws.noaa.gov

Drought Monitor, Valid March 8, 2022.



Drought Conditions (Percent Area)

| | None | D0-D4 | D1-D4 | D2-D4 | D3-D4 | D4 |
|--|-------|-------|-------|-------|-------|------|
| Current | 3.95 | 96.05 | 89.93 | 68.43 | 36.38 | 6.39 |
| Last Week <i>03-01-2022</i> | 6.66 | 93.34 | 80.71 | 56.71 | 24.47 | 0.00 |
| 3 Months Ago <i>12-07-2021</i> | 18.80 | 81.20 | 55.01 | 20.05 | 0.14 | 0.00 |
| Start of Calendar Year <i>01-04-2022</i> | 7.58 | 92.42 | 79.83 | 54.25 | 16.69 | 0.00 |
| Start of Water Year <i>09-28-2021</i> | 45.57 | 54.43 | 7.26 | 0.27 | 0.00 | 0.00 |
| One Year Ago <i>03-09-2021</i> | 10.83 | 89.17 | 62.49 | 32.36 | 18.27 | 6.11 |

Intensity:

- None
- D0 Abnormally Dry
- D1 Moderate Drought
- D2 Severe Drought
- D3 Extreme Drought
- D4 Exceptional Drought

The Drought Monitor focuses on broad-scale conditions. Local conditions may vary. For more information on the Drought Monitor, go to <https://droughtmonitor.unl.edu/About.aspx>

Author:

Brian Fuchs
National Drought Mitigation Center



droughtmonitor.unl.edu

Source: National Drought Mitigation Center, a partnership with USDA, U.S. Department of Commerce/NOAA, <http://droughtmonitor.unl.edu>