



# Texas Crop Progress and Condition

Southern Plains Regional Field Office  
Post Office Box 70 Austin, Texas 78767  
(800) 626-3142 · FAX (855) 270-2725 · www.nass.usda.gov/tx

**Issue: TX-CW1123**

**Weekly Summary for March 27 - April 2**

**Released: April 3, 2023**

Most of the state received from trace amounts to 2 inches of precipitation last week, with areas of The Plains and the Trans Pecos still receiving little to no rain. Drought conditions ranged from none to exceptionally dry, with isolated parts of the Edwards Plateau, South Central Texas, and the Northern High Plains being the driest. There was an average of 5.8 days suitable for fieldwork.

**Small Grains:** With increased temperatures and windy weather, non-irrigated fields continued to struggle. Drought conditions have worsened in the Plains. Winter wheat condition throughout the state was rated fair to poor. Winter wheat headed reached 29 percent, 6 points up from the previous year. Oats headed reached 37 percent, up 5 points from the previous year. Oats condition was rated fair to poor.

**Row Crops:** Corn emerged reached 28 percent, up 9 points from the previous year. In the Blacklands foliar herbicide spraying in corn is widespread, following delays from high winds. Sorghum planted reached 46 percent, up 4 points from the previous year. Cotton planted reached 7 percent, up 2 points from the previous year. In the Blacklands and the Plains, farmers have deferred cotton planting due to scattered showers last week. Rice planting continues in the Upper Coast and the Coastal Bend. Rice emerged reached 18 percent, up 7 points from the previous year.

**Fruit, Vegetable, and Specialty Crops:** Citrus, sugarcane, onion, and vegetable producers completed harvest in South Texas. Pecan trees in the Edwards plateau have budded out.

**Livestock, Range and Pasture:** Supplemental feeding continued throughout the state. Range and pasture condition was rated poor to very poor.

## Crop Progress

Stage	Percent of Acreage			
	Current Week	Previous Week	Previous Year	5 Year Average
<b>Corn</b>				
Planted	57	52	54	54
Emerged	28	(NA)	19	26
<b>Cotton</b>				
Planted	7	(NA)	5	8
<b>Rice</b>				
Planted	35	22	40	49
Emerged	18	(NA)	11	18
<b>Sorghum</b>				
Planted	46	38	42	45
<b>Winter Wheat</b>				
Headed	29	25	23	20
<b>Oats</b>				
Headed	37	32	32	26

(NA) Not available.

## Crop Condition

Crop	Percent of Acreage					Index <sup>1</sup>	
	Excellent	Good	Fair	Poor	Very Poor	2023	2022
Wheat	4	14	35	25	22	45	22
Oats	4	16	32	27	21	45	21
Range and Pasture	2	10	25	32	31	33	26

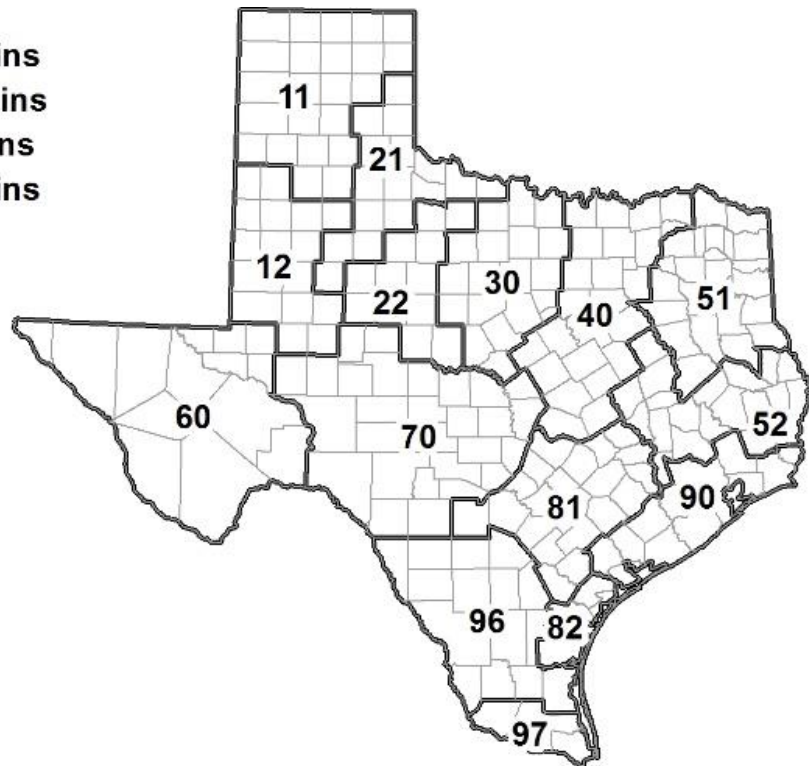
<sup>1</sup> The formula for the condition index is  $I = (5V + 25P + 60F + 90G + 110E)/100$  where I = crop condition index and V, P, F, G, E = percentage of crop rated very poor, poor, fair, good, excellent.

### Soil Moisture and Days Suitable by District

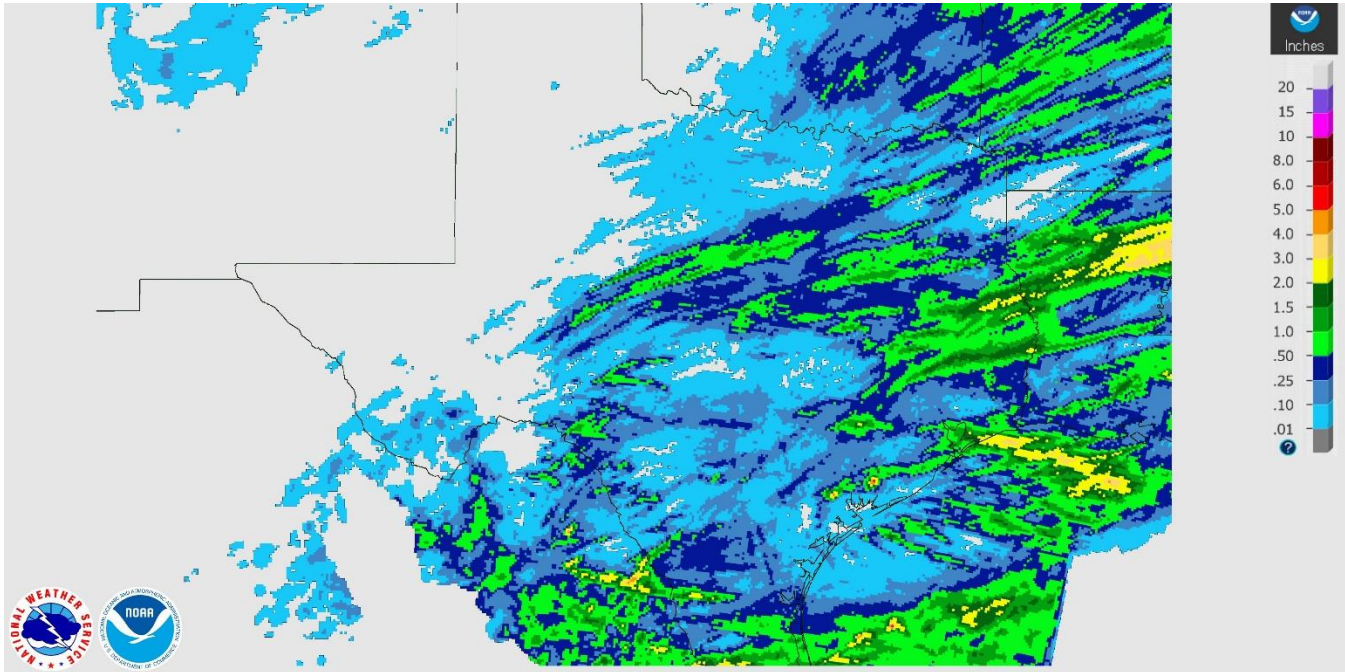
District	Subsoil Moisture Condition by District				Topsoil Moisture Condition by District				Days Suitable for Fieldwork
	Percentage of Acreage				Percentage of Acreage				
	Very Short	Short	Adequate	Surplus	Very Short	Short	Adequate	Surplus	
11	60	24	16	0	73	24	3	0	6.1
12	60	40	0	0	69	30	1	0	6.0
21	26	53	21	0	49	34	17	0	5.6
22	36	58	6	0	22	42	36	0	5.4
30	4	49	46	1	4	42	49	5	5.6
40	20	24	48	8	18	23	42	17	5.3
51	1	4	50	45	2	6	48	44	4.8
52	2	25	68	5	1	23	71	5	6.3
60	27	33	40	0	28	33	39	0	6.2
70	37	46	16	1	46	36	17	1	6.5
81	11	46	41	2	15	46	35	4	6.1
82	26	53	21	0	100	0	0	0	7.0
90	3	51	42	4	4	37	54	5	5.6
96	29	64	7	0	25	65	10	0	6.1
97	15	35	25	25	32	39	24	5	4.3
State	35	37	24	4	41	31	23	5	5.8

### Texas Agricultural Districts

- 11 Northern High Plains**
- 12 Southern High Plains**
- 21 Northern Low Plains**
- 22 Southern Low Plains**
- 30 Cross Timbers**
- 40 Blacklands**
- 51 North East**
- 52 South East**
- 60 Trans-Pecos**
- 70 Edwards Plateau**
- 81 South Central**
- 82 Coastal Bend**
- 90 Upper Coast**
- 96 South**
- 97 Lower Valley**

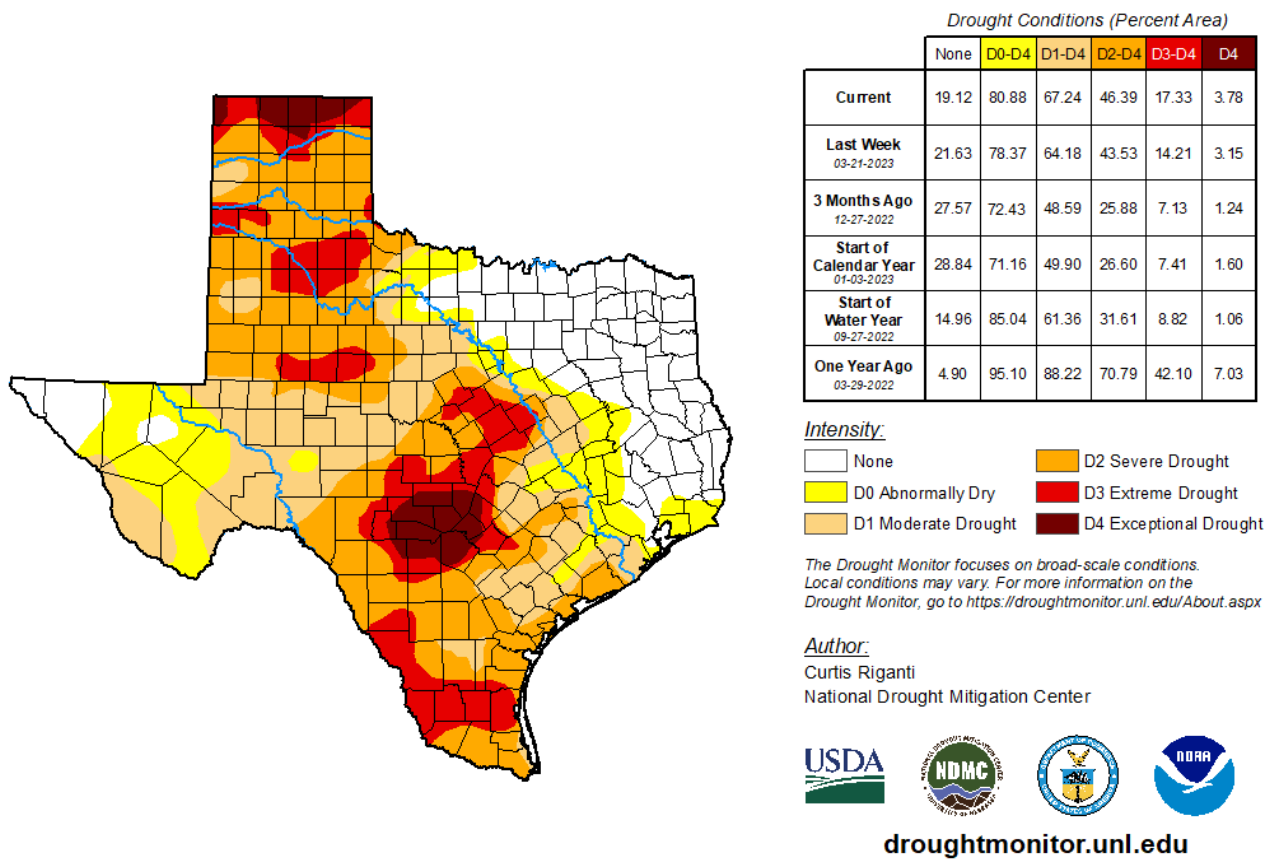


**Seven Day Observed Regional Precipitation, April 2, 2023.**



Source: National Weather Service, [www.nws.noaa.gov](http://www.nws.noaa.gov)

**Drought Monitor, Valid March 28, 2023.**



Source: National Drought Mitigation Center, a partnership with USDA, U.S. Department of Commerce/NOAA, <http://droughtmonitor.unl.edu>