



# Texas Crop Progress and Condition

Southern Plains Regional Field Office  
Post Office Box 70 Austin, Texas 78767  
(800) 626-3142 · FAX (855) 270-2725 · [www.nass.usda.gov/tx](http://www.nass.usda.gov/tx)

**Issue: TX-CW1121**

**Weekly Summary for March 29 - April 4**

**Released: April 5, 2021**

Most of the state received from trace amounts to upwards of 1.5 inches of precipitation. Some areas in the Coastal Bend, South Texas, and the Lower Valley received up to 2.0 inches. Precipitation was needed throughout the state as drought conditions continued in many areas. There were 6.5 days suitable for fieldwork.

**Small Grains:** Small grains were reported in various stages and conditions across the state. Greenbug issues were reported again in the Northern Low Plains. Meanwhile, strip rust was a concern in some winter wheat crops in the Blacklands and fungicide spraying had begun. In South Texas small grain crops were under irrigation in some areas.

**Row Crops:** In the High Plains and the Southern Low Plains, farmers continued pre-planting activities for row crops. Corn and sorghum planting in the Cross Timbers and the Blacklands was close to complete. Pre-irrigation on row crop fields continued in the Trans-Pecos. Farmers in Edwards Plateau were gearing up for cotton planting. Meanwhile, cotton planting was moving along quickly in South Central Texas. Cotton, rice, and soybean planting continued in the Upper Coast, while corn and sorghum fields were looking good. In South Texas, early cotton planting had begun as corn and sorghum fields began irrigation. Producers in the Lower Valley worked to finish planting cotton.

**Fruit, Vegetable and Specialty Crops:** Pecan orchards in the Cross Timbers had begun to bud in some areas. Meanwhile, pecan orchards in the Trans-Pecos and vegetable fields in South Texas continued irrigation. Onion and sugarcane harvest continued in the Lower Valley.

**Livestock, Range and Pasture:** Supplemental feeding continued across the state. Runoff rainwater was still needed in the Northern Low Plains, Edwards Plateau, and the Blacklands to fill tanks for livestock. Coastal Bermuda had begun emerging at a slow pace in the Cross Timbers. The fly population continued to increase in the Blacklands and North East Texas. Spring calves in North East Texas were doing well. In Edwards Plateau, spring lambing and kidding continued while spring sheep shearing had begun. Pasture and range condition was rated mostly fair to poor, though pasture conditions varied greatly across the state.

**Crop Condition**

Crop	Percent of Acreage					Index <sup>1</sup>	
	Excellent	Good	Fair	Poor	Very Poor	2021	2020
Wheat	8	22	40	18	12	58	78
Oats	0	18	30	36	16	44	74
Range and Pasture	1	13	33	32	21	42	69

<sup>1</sup> The formula for the condition index is  $I = (5V + 25P + 60F + 90G + 110E)/100$  where I = crop condition index and V, P, F, G, E = percentage of crop rated very poor, poor, fair, good, excellent.

### Crop Progress

Stage	Percent of Acreage			
	Current Week	Previous Week	Previous Year	5 Year Average
Corn				
Planted	55	50	56	53
Emerged	30	(NA)	32	29
Cotton				
Planted	10	6	11	9
Rice				
Planted	59	39	71	51
Emerged	32	(NA)	40	23
Sorghum				
Planted	46	45	51	46
Winter Wheat				
Headed	25	24	29	21
Oats				
Headed	31	16	25	26

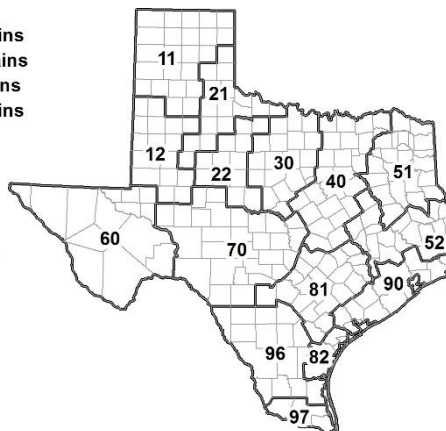
(NA) Not available.

### Soil Moisture and Days Suitable by District

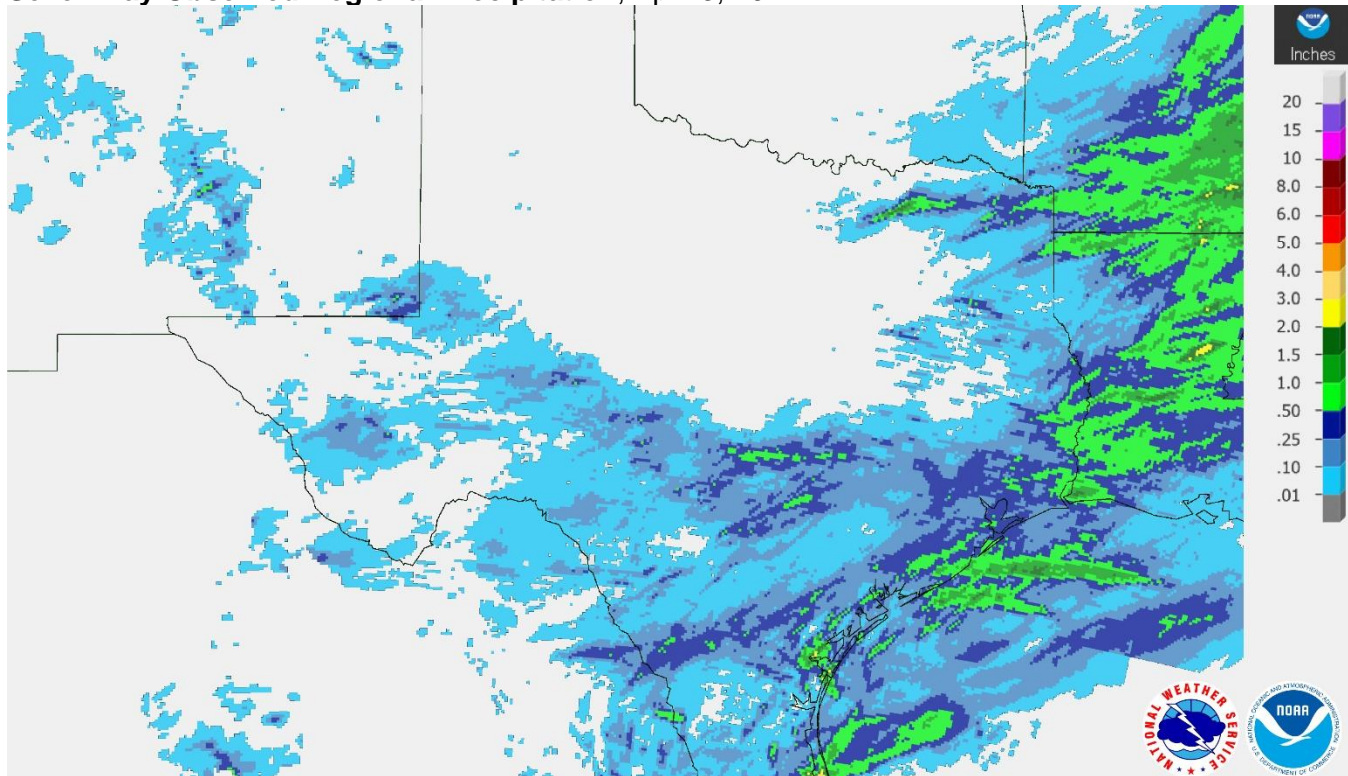
District	Topsoil Moisture Condition by District				Subsoil Moisture Condition by District				Days Suitable for Fieldwork
	Percentage of Acreage				Percentage of Acreage				
	Very Short	Short	Adequate	Surplus	Very Short	Short	Adequate	Surplus	
11	25	32	42	1	28	29	42	1	6.2
12	24	76	0	0	21	79	0	0	6.4
21	2	47	51	0	2	35	63	0	6.8
22	0	49	51	0	0	44	33	23	7.0
30	4	35	61	0	3	33	64	0	6.3
40	16	48	35	1	11	38	50	1	6.3
51	4	15	73	8	2	15	76	7	7.0
52	2	28	69	1	1	26	72	1	7.0
60	18	26	56	0	19	20	61	0	6.4
70	25	47	26	2	23	57	19	1	6.9
81	25	36	39	0	16	42	42	0	6.7
82	22	39	39	0	22	39	39	0	6.2
90	5	18	71	6	6	15	52	27	6.7
96	58	36	6	0	57	37	6	0	6.6
97	78	21	1	0	71	28	1	0	4.9
State	19	44	36	1	17	42	37	4	6.5

### Texas Agricultural Districts

- 11 Northern High Plains
- 12 Southern High Plains
- 21 Northern Low Plains
- 22 Southern Low Plains
- 30 Cross Timbers
- 40 Blacklands
- 51 North East
- 52 South East
- 60 Trans-Pecos
- 70 Edwards Plateau
- 81 South Central
- 82 Coastal Bend
- 90 Upper Coast
- 96 South
- 97 Lower Valley

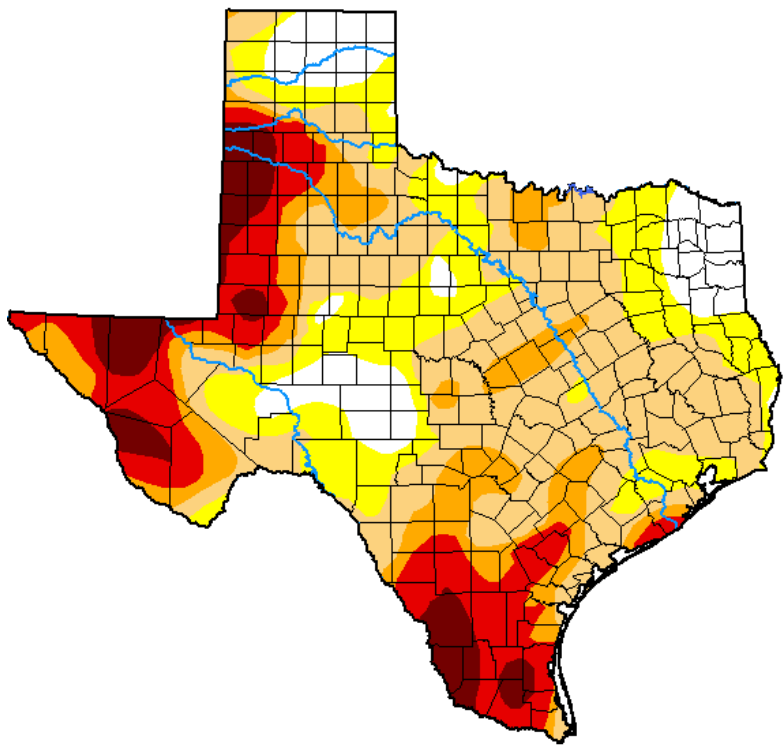


**Seven Day Observed Regional Precipitation, April 3, 2021.**



Source: National Weather Service, [www.nws.noaa.gov](http://www.nws.noaa.gov).

**Drought Monitor, Valid March 30, 2021.**



*Drought Conditions (Percent Area)*

	None	D0-D4	D1-D4	D2-D4	D3-D4	D4
<b>Current</b>	10.72	89.28	69.20	34.25	20.38	6.85
<b>Last Week</b> <i>03-23-2021</i>	9.70	90.30	67.92	36.19	20.42	6.91
<b>3 Months Ago</b> <i>12-29-2020</i>	8.80	91.20	81.10	50.33	30.09	13.03
<b>Start of Calendar Year</b> <i>12-29-2020</i>	8.80	91.20	81.10	50.33	30.09	13.03
<b>Start of Water Year</b> <i>09-29-2020</i>	57.35	42.65	31.96	20.91	12.02	3.29
<b>One Year Ago</b> <i>03-31-2020</i>	73.40	26.60	20.26	14.60	5.47	0.35

Intensity:

- None
- D0 Abnormally Dry
- D1 Moderate Drought
- D2 Severe Drought
- D3 Extreme Drought
- D4 Exceptional Drought

*The Drought Monitor focuses on broad-scale conditions. Local conditions may vary. For more information on the Drought Monitor, go to <https://droughtmonitor.unl.edu/About.aspx>*

Author:  
Brad Pugh  
CPC/NOAA



Source: National Drought Mitigation Center, a partnership with USDA, U.S. Department of Commerce/NOAA, <http://droughtmonitor.unl.edu>.