



United States Department of Agriculture
National Agricultural Statistics Service



Texas Crop Progress and Condition

Southern Plains Regional Field Office
Post Office Box 70 Austin, Texas 78767
(800) 626-3142 · FAX (855) 270-2725 · www.nass.usda.gov/tx

Issue: TX-CW1019

Weekly Summary for April 1- 7

Released: April 8, 2019

Most of the state experienced warmer temperatures last week. Windy conditions combined with warmer daytime temperatures, caused an overall loss of topsoil moisture. The High Plains and the Trans-Pecos received little to no precipitations, while rainfall in the rest of the state ranged from 0.2 to 3 inches, with areas in the Blacklands and South Central Texas getting upwards of 5 inches. Hail was reported in the Northern High Plains and South Central Texas. Growers were assessing crops for damage. There were 6.2 days suitable for fieldwork.

Small Grains: Wheat conditions in the Northern High Plains improved due to timely rain, but some areas of the Northern Low Plains were still in need of moisture. Wheat was heading in the Southern Plains. Small grains kept progressing in the Cross Timbers, the Blacklands, the Edwards Plateau, South Texas and the Lower Valley. Wheat irrigation was active in South Texas.

Row Crops: Cotton planting was ongoing in the Blacklands, South Texas, the Lower Valley, the Upper Coast, the Coastal Bend and South Central Texas. Corn planting was nearing completion in the Southern Low Plains, the Cross Timbers and the Blacklands. Corn and sorghum progress was somewhat delayed by cool nighttime temperatures in areas of the Edwards Plateau. Rice planting was delayed in the Upper Coast due to excessive soil moisture.

Fruit, Vegetable and Specialty Crops: Watermelons and vegetables were being planted in the Cross Timbers. Spinach harvest was completed, while cabbage harvest continued in South Texas. Pecan trees were budding in the Cross Timbers, the Edwards Plateau and the Southern High Plains.

Livestock, Range and Pasture: Livestock condition across the state was mostly good to fair. Use of supplemental feed dropped from the previous week. Pasture and range condition benefitted from precipitation and warmer temperatures, and was rated mostly fair to good.

Crop Condition

Crop	Percent of Acreage					Index ¹	
	Excellent	Good	Fair	Poor	Very Poor	2019	2018
Wheat	8	39	34	14	5	68	37
Oats	4	38	39	11	8	65	59
Range and Pasture	6	36	40	15	3	--	--

¹ The formula for the condition index is $I = (5V + 25P + 60F + 90G + 110E)/100$ where I = crop condition index and V, P, F, G, E = percentage of crop rated very poor, poor, fair, good, excellent.

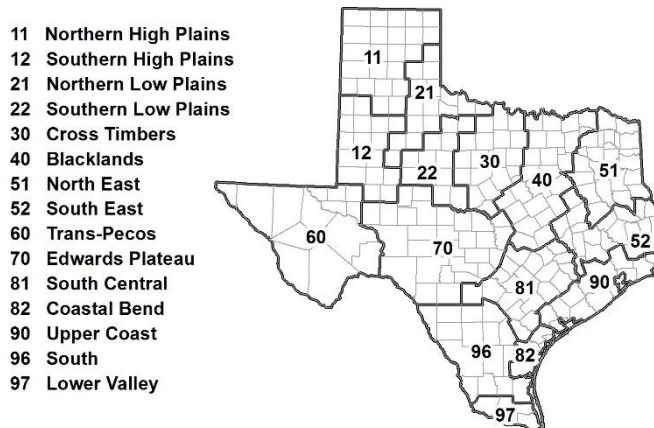
Crop Progress

Stage	Percent of Acreage			
	Current Week	Previous Week	Previous Year	5 Year Average
Corn				
Planted	53	51	58	51
Emerged	32	25	38	28
Cotton				
Planted	9	7	12	8
Rice				
Planted	38	17	64	49
Emerged	9	0	40	23
Sorghum				
Planted	47	43	53	41
Winter Wheat				
Headed	15	8	16	18
Oats				
Headed	26	16	42	22

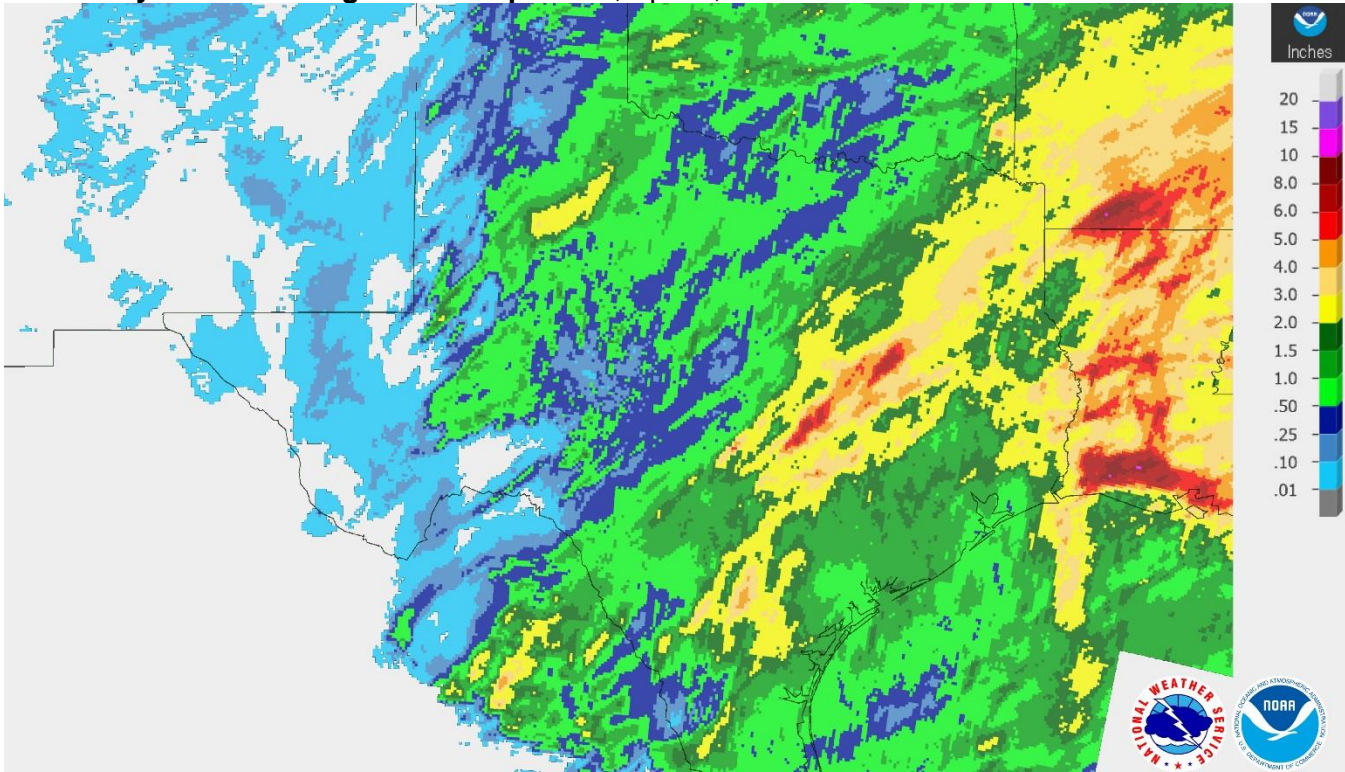
Soil Moisture and Days Suitable by District

District	Topsoil Moisture Condition by District				Subsoil Moisture Condition by District				Days Suitable for Fieldwork
	Percentage of Acreage				Percentage of Acreage				
	Very Short	Short	Adequate	Surplus	Very Short	Short	Adequate	Surplus	
11	4	42	50	4	3	37	58	2	6.9
12	1	59	40	0	1	50	46	3	6.7
21	11	60	27	2	7	45	48	0	6.1
22	0	25	73	2	0	13	85	2	6.1
30	8	35	57	0	2	25	73	0	6.2
40	1	13	68	18	0	5	76	19	5.4
51	0	3	68	29	0	0	71	29	5.0
52	0	8	58	34	0	5	61	34	5.6
60	30	30	40	0	36	27	37	0	6.7
70	8	53	38	1	5	21	72	2	6.7
81	0	50	49	1	0	44	54	2	5.9
82	0	0	38	62	0	5	70	25	5.4
90	1	39	49	11	0	4	44	52	4.9
96	28	21	50	1	32	13	55	0	5.1
97	20	60	20	0	20	60	20	0	7.0
State	4	38	50	8	4	28	59	9	6.2

Texas Agricultural Districts

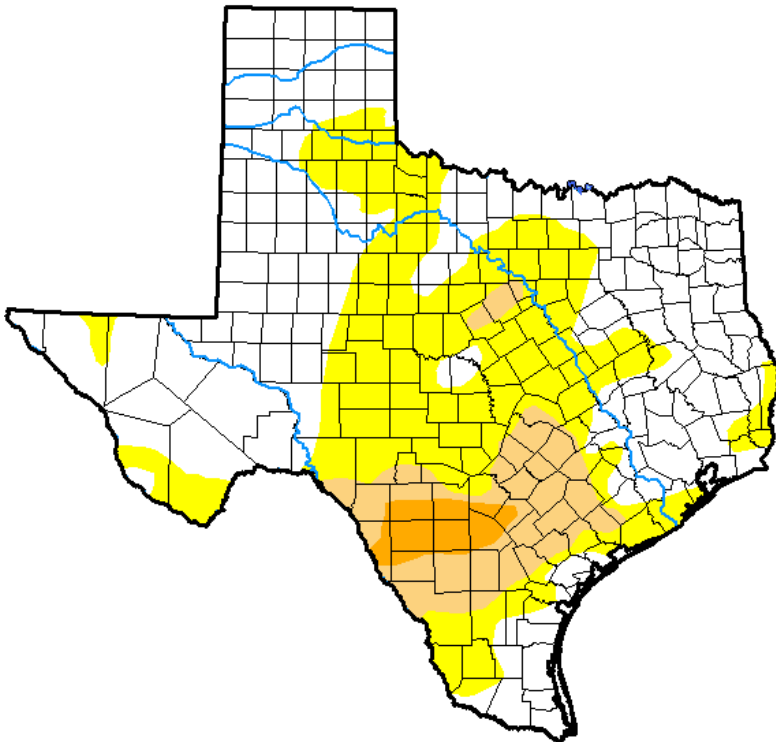


Seven Day Observed Regional Precipitation, April 7, 2019.



Source: National Weather Service, www.nws.noaa.gov.

Drought Monitor, Valid April 2, 2019.



Drought Conditions (Percent Area)

	None	D0-D4	D1-D4	D2-D4	D3-D4	D4
Current	54.27	45.73	12.20	2.61	0.00	0.00
Last Week <i>02-26-2019</i>	61.92	38.08	11.44	2.38	0.00	0.00
3 Months Ago <i>01-01-2019</i>	92.99	7.01	1.32	0.00	0.00	0.00
Start of Calendar Year <i>01-01-2019</i>	92.99	7.01	1.32	0.00	0.00	0.00
Start of Water Year <i>09-25-2018</i>	57.46	42.54	20.19	7.03	0.96	0.00
One Year Ago <i>04-03-2018</i>	33.29	66.71	49.43	21.57	13.21	1.47

Intensity:

- D0 Abnormally Dry
- D1 Moderate Drought
- D2 Severe Drought
- D3 Extreme Drought
- D4 Exceptional Drought

The Drought Monitor focuses on broad-scale conditions. Local conditions may vary. See accompanying text summary for forecast statements.

Author:

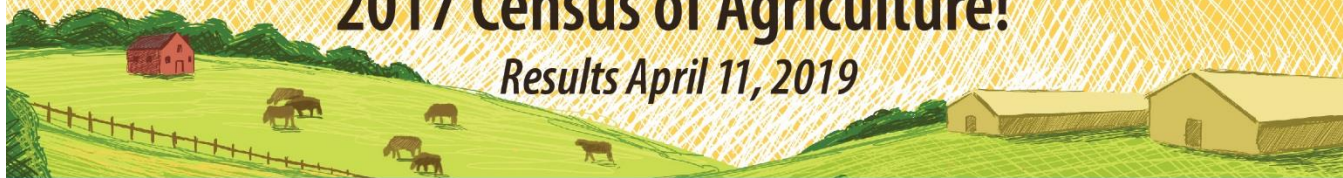
Curtis Riganti
National Drought Mitigation Center



Source: National Drought Mitigation Center, a partnership with USDA, U.S. Department of Commerce/NOAA, <http://droughtmonitor.unl.edu>

Thank You for responding to the 2017 Census of Agriculture!

Results April 11, 2019



For more information about the census and its special studies, visit www.nass.usda.gov/AgCensus