



Texas Crop Progress and Condition

Southern Plains Regional Field Office
Post Office Box 70 Austin, Texas 78767
(800) 626-3142 · FAX (855) 270-2725 · www.nass.usda.gov/tx

Issue: TX-CW1223

Weekly Summary for April 3 - April 9

Released: April 10, 2023

Most of the state received from trace amounts to 3 inches of precipitation last week. Most of The Plains, the Edwards Plateau, and the Trans Pecos still received little to no rain, while many of the southeastern districts of the state received 2 to 6 inches. Drought conditions ranged from none to exceptionally dry, with isolated parts of the Edwards Plateau, South Central Texas, and the Plains being the driest. There was an average of 5.5 days suitable for fieldwork.

Small Grains: Non-Irrigated winter wheat continued to struggle in the Plains. In the Crosstimbers and the Blacklands producers have noticed improvement in winter wheat crops. Winter wheat condition throughout the state was rated fair to poor. Winter wheat headed reached 31 percent, 5 points up from the previous year. Oats headed reached 41 percent, down one point from the previous year. Oats condition was rated fair to poor.

Row Crops: Corn emerged reached 40 percent, down 2 points from the previous year. In the Blacklands and the Coastal Bend, producers noticed damage from recent high winds and drought conditions in corn and sorghum fields. Sorghum planted reached 48 percent, up one point from the previous year. Cotton planted reached 11 percent, same as the previous year. In the Coastal Bend and the Upper Coast, planting continued while areas of the Blacklands continued to wait for warmer weather and more ideal soil conditions. Rice planting halted in the Upper Coast due to last week's rains. Rice emerged reached 27 percent, up 3 points from the previous year.

Fruit, Vegetable, and Specialty Crops: Citrus and vegetable harvest has stopped in the Lower Valley due to soaked fields.

Livestock, Range and Pasture: Supplemental feeding continued throughout the state. Range and pasture condition was rated poor to very poor.

Crop Progress

Stage	Percent of Acreage			
	Current Week	Previous Week	Previous Year	5 Year Average
Corn				
Planted	61	57	62	58
Emerged	40	28	42	40
Cotton				
Planted	11	7	11	12
Rice				
Planted	49	35	58	62
Emerged	27	18	24	37
Sorghum				
Planted	48	46	47	52
Winter Wheat				
Headed	31	29	26	24
Oats				
Headed	41	37	42	39

Crop Condition

Crop	Percent of Acreage					Index ¹	
	Excellent	Good	Fair	Poor	Very Poor	2023	2022
Wheat	2	15	36	25	22	45	22
Oats	5	15	35	26	19	46	21
Range and Pasture	2	10	29	30	29	36	26

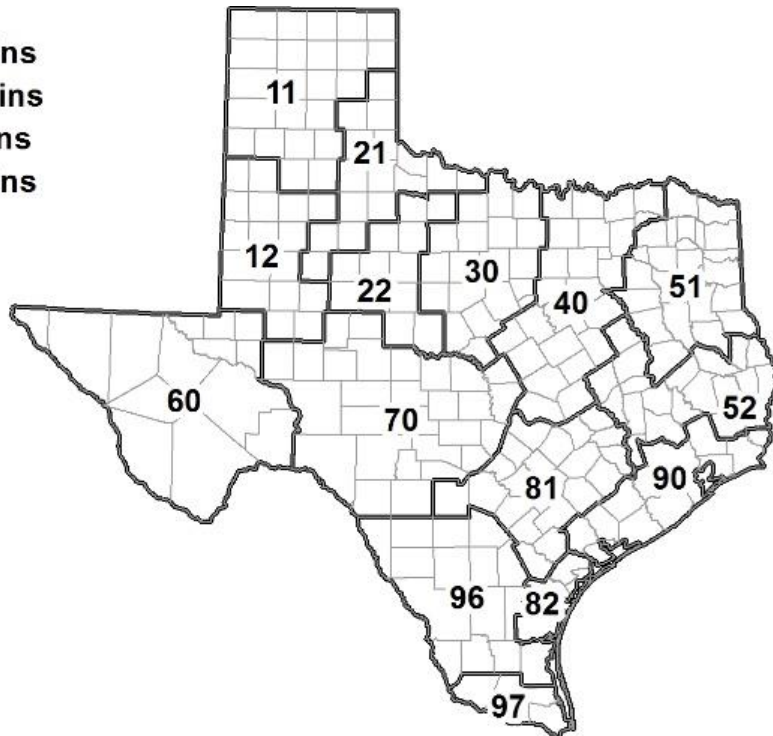
¹ The formula for the condition index is $I = (5V + 25P + 60F + 90G + 110E)/100$ where I = crop condition index and V, P, F, G, E = percentage of crop rated very poor, poor, fair, good, excellent.

Soil Moisture and Days Suitable by District

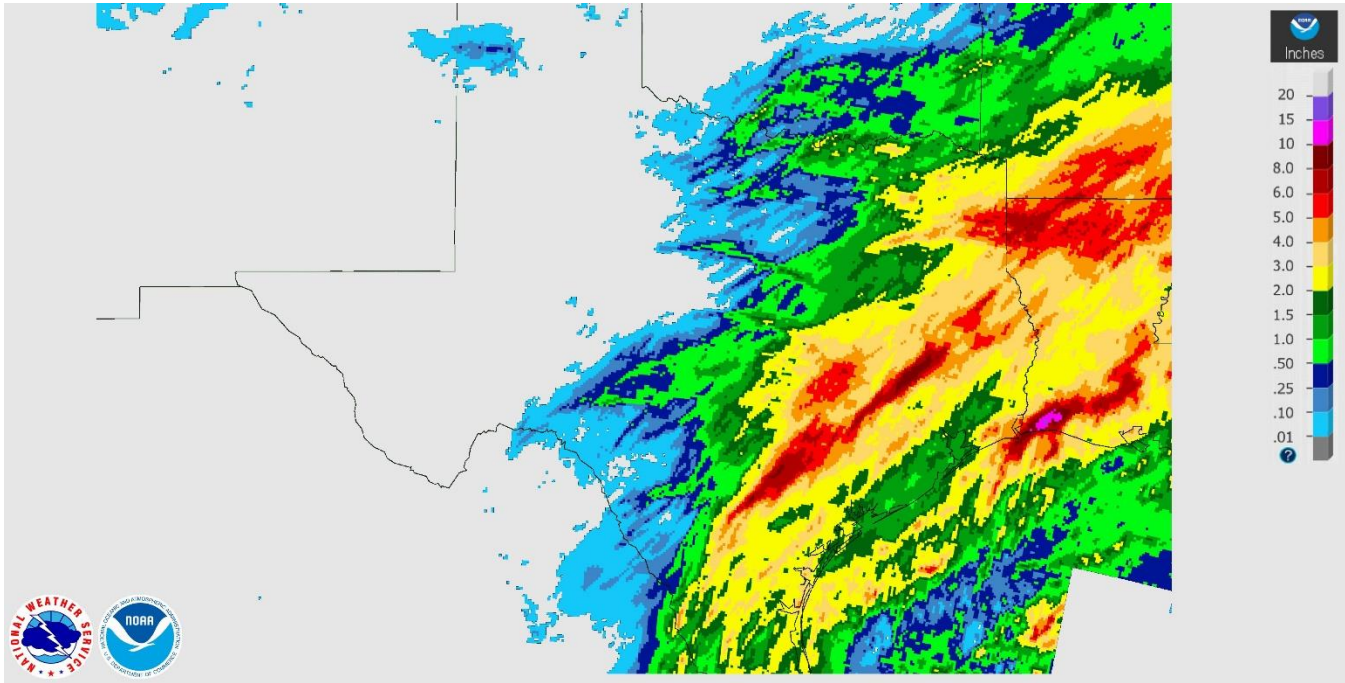
District	Subsoil Moisture Condition by District				Topsoil Moisture Condition by District				Days Suitable for Fieldwork
	Percentage of Acreage				Percentage of Acreage				
	Very Short	Short	Adequate	Surplus	Very Short	Short	Adequate	Surplus	
11	51	31	18	0	52	32	16	0	6.6
12	53	43	4	0	36	59	5	0	6.4
21	18	59	23	0	44	43	13	0	5.6
22	30	62	8	0	20	68	12	0	5.4
30	9	47	44	0	9	38	49	4	6.2
40	15	17	55	13	15	12	55	18	4.4
51	0	1	60	39	0	1	54	45	5.0
52	0	4	53	43	0	3	51	46	4.0
60	33	45	22	0	39	46	15	0	6.2
70	38	44	18	0	45	33	22	0	6.5
81	0	51	29	20	0	44	36	20	4.9
82	13	8	58	21	11	5	63	21	3.4
90	1	35	35	29	0	22	36	42	3.3
96	21	44	35	0	18	43	38	1	5.6
97	4	15	56	25	28	12	55	5	2.7
State	29	36	27	8	28	36	27	9	5.5

Texas Agricultural Districts

- 11 Northern High Plains
- 12 Southern High Plains
- 21 Northern Low Plains
- 22 Southern Low Plains
- 30 Cross Timbers
- 40 Blacklands
- 51 North East
- 52 South East
- 60 Trans-Pecos
- 70 Edwards Plateau
- 81 South Central
- 82 Coastal Bend
- 90 Upper Coast
- 96 South
- 97 Lower Valley

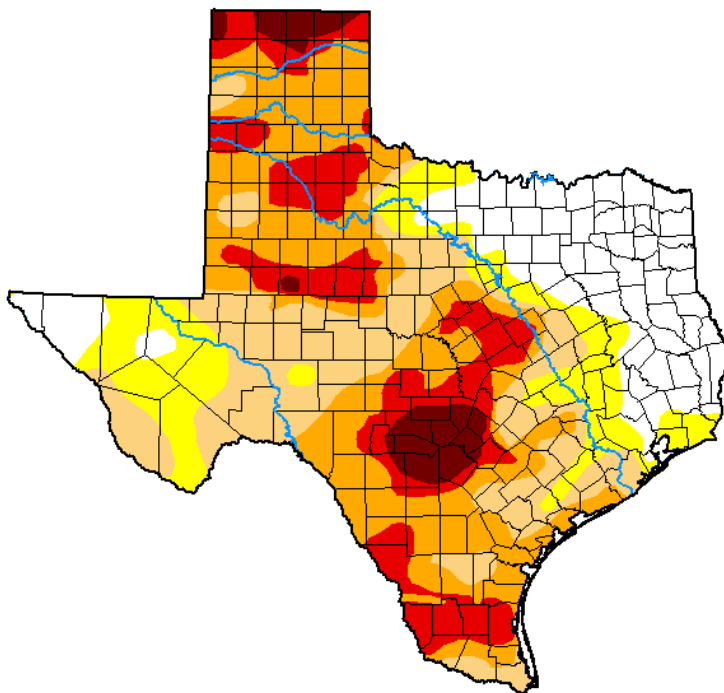


Seven Day Observed Regional Precipitation, April 9, 2023.



Source: National Weather Service, www.nws.noaa.gov

Drought Monitor, Valid April 4, 2023.



Drought Conditions (Percent Area)

	None	D0-D4	D1-D4	D2-D4	D3-D4	D4
Current	19.10	80.90	66.89	45.25	18.98	4.19
Last Week <i>03-28-2023</i>	19.12	80.88	67.24	46.39	17.33	3.78
3 Months Ago <i>01-03-2023</i>	28.84	71.16	49.90	26.60	7.41	1.60
Start of Calendar Year <i>01-03-2023</i>	28.84	71.16	49.90	26.60	7.41	1.60
Start of Water Year <i>09-27-2022</i>	14.96	85.04	61.36	31.61	8.82	1.06
One Year Ago <i>04-05-2022</i>	4.95	95.05	84.73	71.45	40.56	9.78

Intensity:

- None
- D0 Abnormally Dry
- D1 Moderate Drought
- D2 Severe Drought
- D3 Extreme Drought
- D4 Exceptional Drought

The Drought Monitor focuses on broad-scale conditions. Local conditions may vary. For more information on the Drought Monitor, go to <https://droughtmonitor.unl.edu/About.aspx>

Author:

David Simeral
Western Regional Climate Center



droughtmonitor.unl.edu

Source: National Drought Mitigation Center, a partnership with USDA, U.S. Department of Commerce/NOAA, <http://droughtmonitor.unl.edu>