



Texas Crop Progress and Condition

Southern Plains Regional Field Office
Post Office Box 70 Austin, Texas 78767
(800) 626-3142 · FAX (855) 270-2725 · www.nass.usda.gov/tx

Issue: TX-CW1319

Weekly Summary for April 22 - 28

Released: April 29, 2019

A strong storm system affected East Texas, the Blacklands, the Cross Timbers and parts of the Low Plains, South Central Texas and the Edwards Plateau. Precipitation in those areas ranged from 1 to 3 inches, with isolated areas getting upwards of 5 inches of rain. Hail damage and floods were reported in the Southern Low Plains, the Cross Timbers, the Blacklands and East Texas. Rainfall in the rest of the state ranged from traces amounts up to 1 inch. There were 5.1 days suitable for fieldwork.

Small Grains: Small grains continued to progress state-wide. Wheat leaf rust was reported in areas of the Northern Low Plains and black chaff was reported in areas of the Blacklands. Producers in the Blacklands and the Edwards Plateau were still assessing the damage cause by hail that occurred in the previous weeks.

Row Crops: Wet conditions delayed the start of cotton planting in the Blacklands. Producers in the Trans-Pecos, South Texas and the Coastal Bend continued planting cotton. Corn planting was ongoing in the High Plains. Some sorghum remained to be planted in the Blacklands, South Texas and the Southern Low Plains. Emerged corn and sorghum were progressing in most areas of the state.

Fruit, Vegetable and Specialty Crops: Watermelons were being planted in the Southern High Plains. Vegetable plantings were almost complete in South Texas, while development of onions continued. Pecan trees were fully leafed out in the Southern High Plains. Pecan producers in the Trans-Pecos and the Edwards Plateau were irrigating trees and placing nut casebearer traps.

Livestock, Range and Pasture: Livestock condition remained mostly good to fair across the state. Flies were stressing cattle in areas of the Blacklands, the Edwards Plateau and East Texas. Wild hog damage was on the rise in South East Texas. Pasture and range condition continued to benefit from precipitation and warmer temperatures, and was rated mostly good to fair.

Crop Progress

Stage	Percent of Acreage			
	Current Week	Previous Week	Previous Year	5 Year Average
Corn				
Planted	65	59	69	65
Emerged	55	45	50	53
Cotton				
Planted	13	12	15	13
Rice				
Planted	73	64	77	75
Emerged	53	43	68	67
Sorghum				
Planted	65	57	81	66
Headed	1	(NA)	5	2
Soybeans				
Planted	30	15	40	33
Winter Wheat				
Headed	64	41	68	65
Oats				
Headed	84	60	78	77

(NA) Not available

Crop Condition

Crop	Percent of Acreage					Index ¹	
	Excellent	Good	Fair	Poor	Very Poor	2019	2018
Corn	12	55	30	3	0	81	68
Sorghum	15	57	27	0	1	84	(NA)
Wheat	15	46	29	8	2	77	38
Oats	6	42	37	7	8	69	58
Range and Pasture	8	48	34	8	2	--	--

¹ The formula for the condition index is $I = (5V + 25P + 60F + 90G + 110E)/100$ where I = crop condition index and V, P, F, G, E = percentage of crop rated very poor, poor, fair, good, excellent.

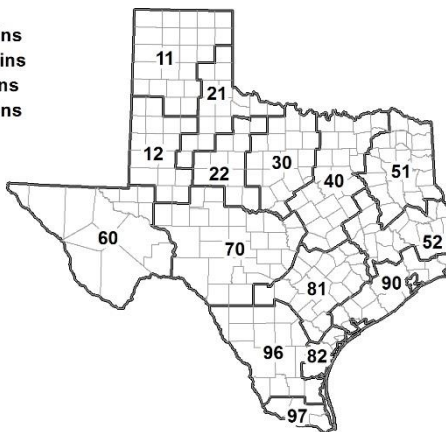
(NA) Not available.

Soil Moisture and Days Suitable by District

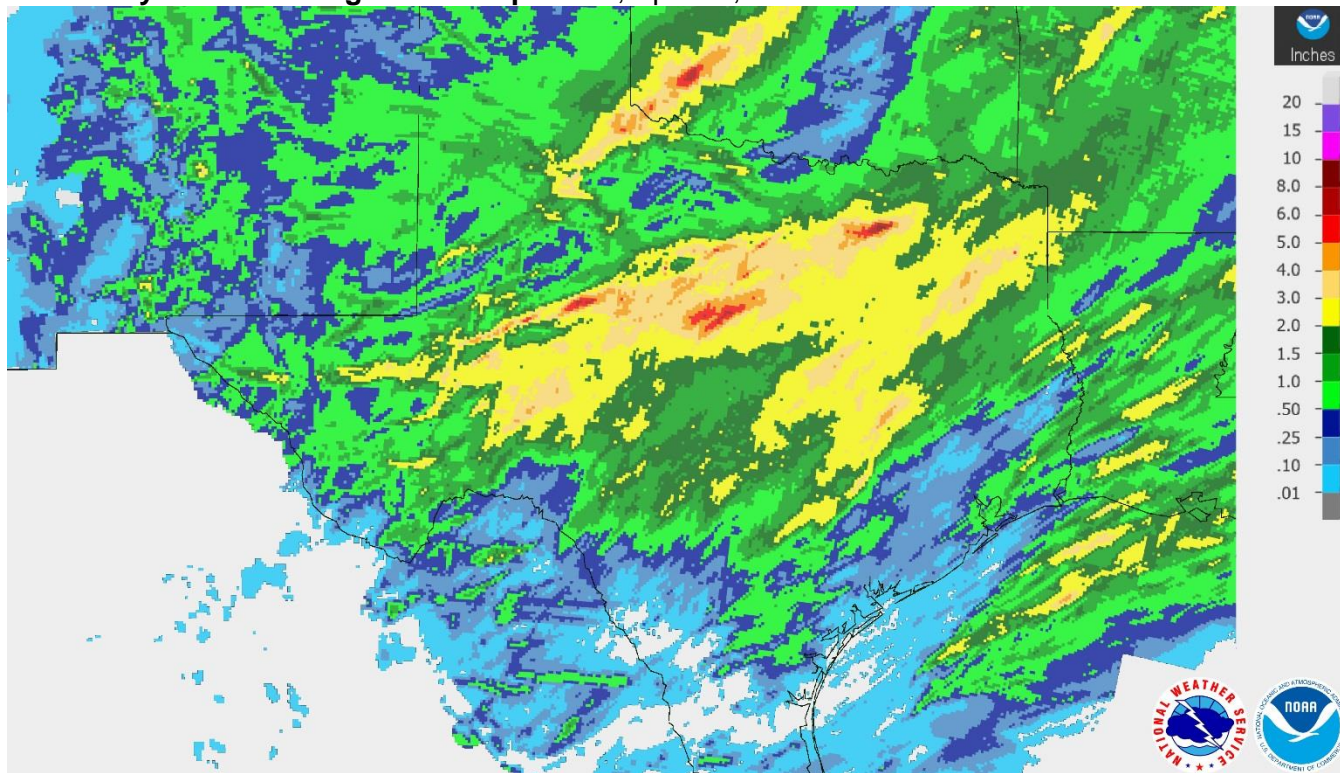
District	Topsoil Moisture Condition by District				Subsoil Moisture Condition by District				Days Suitable for Fieldwork
	Percentage of Acreage				Percentage of Acreage				
	Very Short	Short	Adequate	Surplus	Very Short	Short	Adequate	Surplus	
11	0	35	65	0	1	34	65	0	6.4
12	3	24	70	3	3	26	69	2	5.7
21	0	21	75	4	0	27	70	3	5.1
22	0	16	82	2	0	2	96	2	0.5
30	1	7	54	38	0	8	74	18	4.9
40	0	4	57	39	0	2	58	40	2.6
51	0	1	77	22	0	0	80	20	6.0
52	0	7	51	42	0	6	55	39	5.0
60	28	29	43	0	40	20	40	0	6.8
70	4	10	82	4	3	10	82	5	5.7
81	0	10	84	6	0	12	81	7	5.4
82	0	12	39	49	0	6	62	32	6.4
90	0	39	56	5	0	4	50	46	6.2
96	2	22	76	0	2	16	80	2	4.8
97	20	60	20	0	20	60	20	0	7.1
State	2	21	66	11	2	18	68	12	5.1

Texas Agricultural Districts

- 11 Northern High Plains
- 12 Southern High Plains
- 21 Northern Low Plains
- 22 Southern Low Plains
- 30 Cross Timbers
- 40 Blacklands
- 51 North East
- 52 South East
- 60 Trans-Pecos
- 70 Edwards Plateau
- 81 South Central
- 82 Coastal Bend
- 90 Upper Coast
- 96 South
- 97 Lower Valley

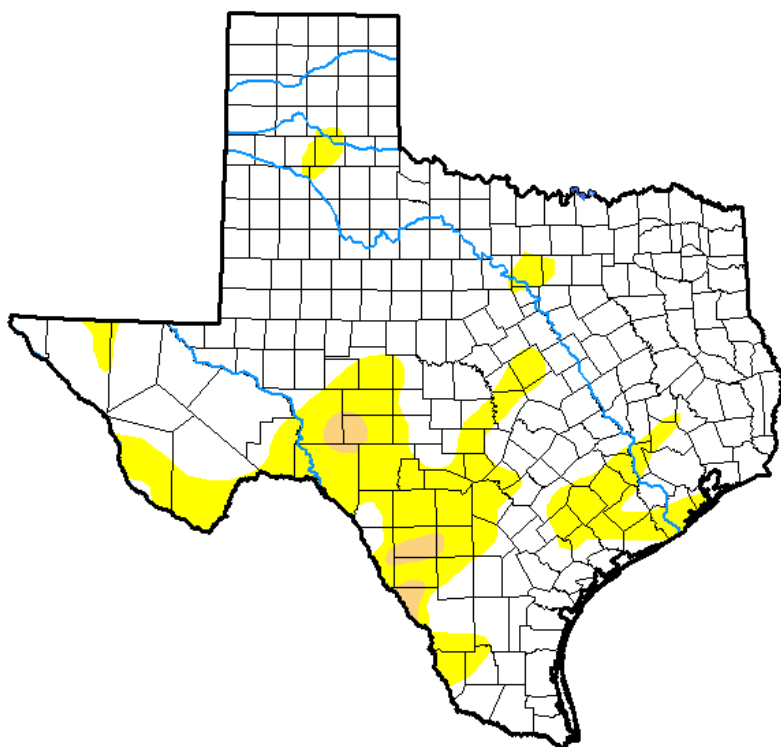


Seven Day Observed Regional Precipitation, April 28, 2019.



Source: National Weather Service, www.nws.noaa.gov.

Drought Monitor, Valid April 23, 2019.



Drought Conditions (Percent Area)

	None	D0-D4	D1-D4	D2-D4	D3-D4	D4
Current	79.75	20.25	1.29	0.00	0.00	0.00
Last Week <i>04-16-2019</i>	74.85	25.15	5.22	0.00	0.00	0.00
3 Months Ago <i>01-22-2019</i>	90.39	9.61	2.45	0.00	0.00	0.00
Start of Calendar Year <i>01-01-2019</i>	92.99	7.01	1.32	0.00	0.00	0.00
Start of Water Year <i>09-25-2018</i>	57.46	42.54	20.19	7.03	0.96	0.00
One Year Ago <i>04-24-2018</i>	33.36	66.64	53.23	26.26	14.54	3.88

Intensity:

- D0 Abnormally Dry
- D1 Moderate Drought
- D2 Severe Drought
- D3 Extreme Drought
- D4 Exceptional Drought

The Drought Monitor focuses on broad-scale conditions. Local conditions may vary. See accompanying text summary for forecast statements.

Author:

David Miskus
NOAA/NWS/NCEP/CPC



Source: National Drought Mitigation Center, a partnership with USDA, U.S. Department of Commerce/NOAA, <http://droughtmonitor.unl.edu>.

Thank You for responding to the 2017 Census of Agriculture!

Results April 11, 2019



For more information about the census and its special studies, visit www.nass.usda.gov/AgCensus