



# Texas Crop Progress and Condition

Southern Plains Regional Field Office  
Post Office Box 70 Austin, Texas 78767  
(800) 626-3142 · FAX (855) 270-2725 · www.nass.usda.gov/tx

**Issue: TX-CW1522**

**Weekly Summary for April 25 - May 1**

**Released: May 2<sup>nd</sup> 2022**

Much of the state received from trace amounts to upwards of 3.00 inches of precipitation. Isolated areas in the Edwards Plateau, the Cross Timbers, South and South East Texas, and the Blacklands received up to 6.00 inches. Drought conditions ranged from none to exceptionally dry with the Trans-Pecos, and Northern and Southern Plains rated the driest. There was an average of 5.8 days suitable for fieldwork.

**Small Grains:** Winter wheat continued to struggle in most of the Plains. Irrigated wheat was doing well in some areas of the Edwards Plateau, and the Northern and Southern High Plains. Recent rainfall improved the standing wheat in areas of the Blacklands and the Cross Timbers. Some wheat producers in the Trans-Pecos plan to cut and bale wheat in the coming weeks, while others in North East Texas continued to graze.

**Row Crops:** Irrigated acres intended for corn were planted in areas of the Northern High Plains. Some corn in the Blacklands was reported as emerged and thriving. Cotton producers in the Northern and Southern Low Plains awaited moisture to begin planting. While some cotton producers in the Cross Timbers and Trans-Pecos planned on planting next week. Rice planting continued in South Central Texas, with some acres replanted in areas of the Upper Coast.

**Fruit, Vegetable and Specialty Crops:** In South Texas, the vegetable crops continued to grow or be planted while strawberry harvest continued. Onion harvest wrapped up in areas of the Lower Valley. Pecan orchards were irrigated, fertilized, and sprayed by some producers in the Trans-Pecos.

**Livestock, Range and Pasture:** Supplemental feeding continued across the state while the fly population increased and burdened livestock in areas of the Blacklands. Feral hogs troubled producers in North East Texas. Topsoil and subsoil conditions were very short due to the lack of moisture. Range and pasture conditions are rated 74 percent, very poor to poor.

## Crop Progress

Stage	Percent of Acreage			
	Current Week	Previous Week	Previous Year	5 Year Average
<b>Corn</b>				
Planted	74	69	68	70
Emerged	62	59	57	57
<b>Cotton</b>				
Planted	20	19	19	17
<b>Rice</b>				
Planted	82	77	90	83
Emerged	68	61	71	72
Headed	6	0	0	0
<b>Sorghum</b>				
Planted	66	63	66	71
<b>Soybeans</b>				
Planted	45	27	35	40
<b>Winter Wheat</b>				
Headed	66	45	64	72
<b>Oats</b>				
Headed	84	74	88	88

### Crop Condition

Crop	Percent of Acreage					Index <sup>1</sup>	
	Excellent	Good	Fair	Poor	Very Poor	2022	2021
Corn	4	23	63	7	3	65	72
Wheat	0	8	15	19	58	24	51
Oats	0	8	11	21	60	22	51
Range and Pasture	1	8	17	29	45	28	41

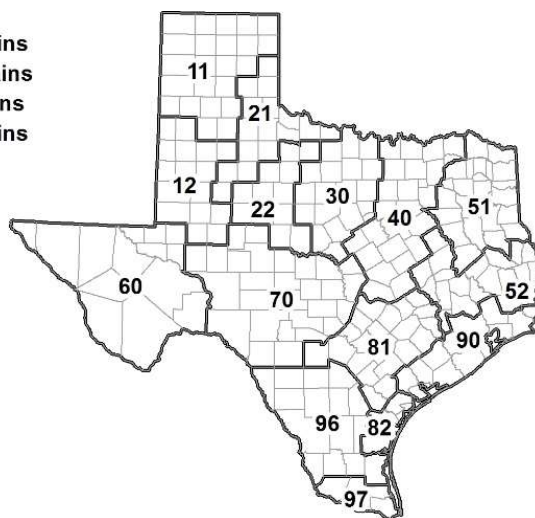
<sup>1</sup> The formula for the condition index is  $I = (5V + 25P + 60F + 90G + 110E)/100$  where I = crop condition index and V, P, F, G, E = percentage of crop rated very poor, poor, fair, good, excellent.

### Soil Moisture and Days Suitable by District

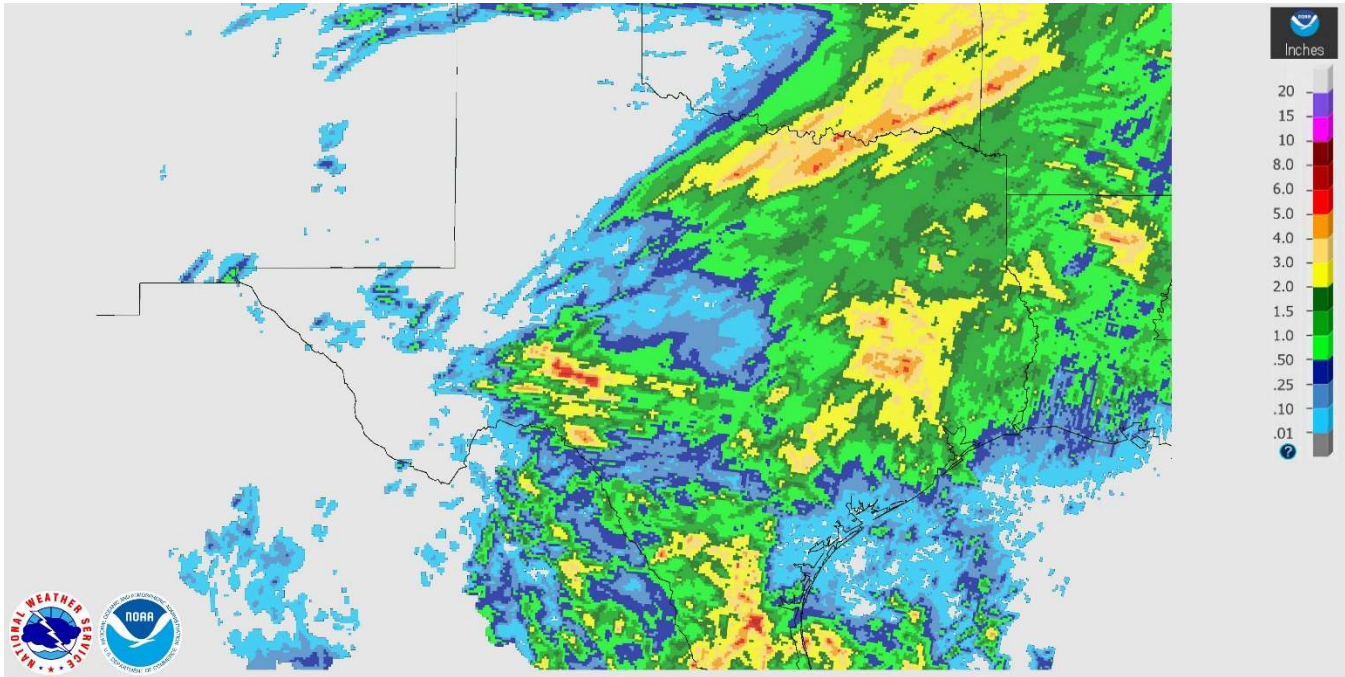
District	Topsoil Moisture Condition by District				Subsoil Moisture Condition by District				Days Suitable for Fieldwork
	Percentage of Acreage				Percentage of Acreage				
	Very Short	Short	Adequate	Surplus	Very Short	Short	Adequate	Surplus	
11	92	8	0	0	91	9	0	0	5.4
12	86	14	0	0	86	14	0	0	5.9
21	49	51	0	0	50	49	1	0	6.2
22	61	39	0	0	77	21	2	0	6.4
30	28	54	12	6	25	41	27	7	5.6
40	14	28	56	2	16	27	54	3	5.7
51	4	21	64	11	4	23	63	10	5.9
52	3	35	60	2	4	41	52	3	4.7
60	33	40	27	0	35	35	30	0	6.1
70	82	17	1	0	73	21	6	0	6.5
81	14	40	41	5	9	43	43	5	5.5
82	52	44	4	0	53	43	4	0	7.0
90	20	43	35	2	27	49	22	2	6.4
96	46	37	17	0	53	28	19	0	4.8
97	30	43	25	2	42	40	16	2	5.0
State	55	27	17	1	56	25	17	2	5.8

### Texas Agricultural Districts

- 11 Northern High Plains
- 12 Southern High Plains
- 21 Northern Low Plains
- 22 Southern Low Plains
- 30 Cross Timbers
- 40 Blacklands
- 51 North East
- 52 South East
- 60 Trans-Pecos
- 70 Edwards Plateau
- 81 South Central
- 82 Coastal Bend
- 90 Upper Coast
- 96 South
- 97 Lower Valley

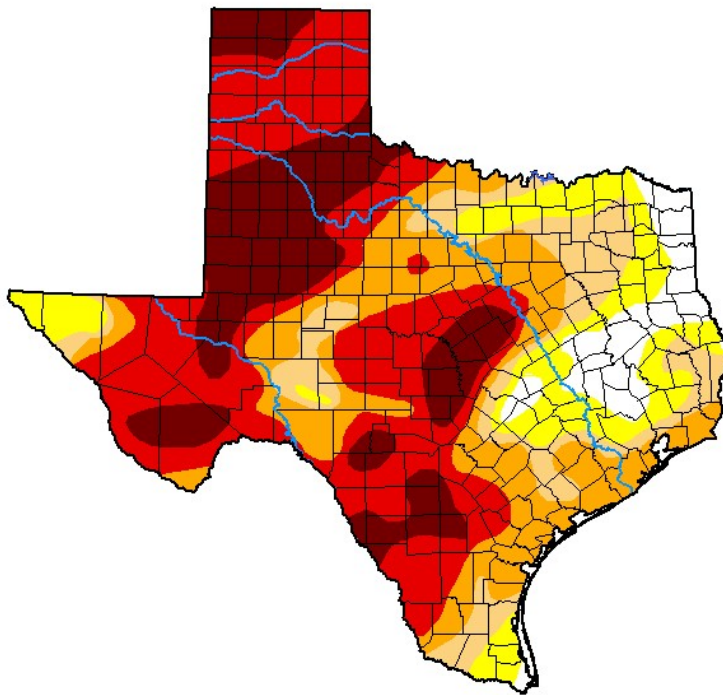


## Seven Day Observed Regional Precipitation, May 1, 2022.



Source: National Weather Service, [www.nws.noaa.gov](http://www.nws.noaa.gov)

## Drought Monitor, Valid April 26, 2022.



Drought Conditions (Percent Area)

	None	D0-D4	D1-D4	D2-D4	D3-D4	D4
<b>Current</b>	6.21	93.79	82.11	70.28	50.25	19.62
<b>Last Week</b> 04-19-2022	3.87	96.13	87.38	72.46	53.54	15.91
<b>3 Months Ago</b> 01-25-2022	3.71	96.29	86.71	67.46	31.84	0.00
<b>Start of Calendar Year</b> 01-04-2022	7.58	92.42	79.83	54.25	16.69	0.00
<b>Start of Water Year</b> 09-28-2021	45.57	54.43	7.26	0.27	0.00	0.00
<b>One Year Ago</b> 04-27-2021	13.47	86.53	64.95	37.80	24.70	9.74

Intensity:

- None
- D0 Abnormally Dry
- D1 Moderate Drought
- D2 Severe Drought
- D3 Extreme Drought
- D4 Exceptional Drought

The Drought Monitor focuses on broad-scale conditions. Local conditions may vary. For more information on the Drought Monitor, go to <https://droughtmonitor.unl.edu/About.aspx>

Author:

Brad Rippey  
U.S. Department of Agriculture



[droughtmonitor.unl.edu](http://droughtmonitor.unl.edu)

Source: National Drought Mitigation Center, a partnership with USDA, U.S. Department of Commerce/NOAA, <http://droughtmonitor.unl.edu>