



## Texas Crop Progress and Condition

Southern Plains Regional Field Office  
Post Office Box 70 Austin, Texas 78767  
(800) 626-3142 · FAX (855) 270-2725 · [www.nass.usda.gov/tx](http://www.nass.usda.gov/tx)

**Issue: TX-CW1822**

**Weekly Summary for May 16 - May 22**

**Released: May 23, 2022**

Much of the state received from trace amounts to upwards of 3.00 inches of precipitation. Isolated areas in South East Texas received up to 6.00 inches. Drought conditions ranged from none to exceptionally dry with the Trans-Pecos, the Edwards Plateau, South Texas, and the Northern and Southern Plains being the driest. There was an average of 6.3 days suitable for fieldwork.

**Small Grains:** Winter wheat producers continued or began to harvest in some areas of South Central Texas, the Blacklands, the Cross Timbers, and the High and Low Plains. In the Blacklands, some producers with lower yields were happily harvesting due to the rising price of winter wheat.

**Row Crops:** Some cotton producers in the Northern High Plains were deciding between planting cotton or sorghum while dry conditions remain. Cotton plantings slowly progressed in the Trans-Pecos and the Edwards Plateau, while some producers would start planting next week. Corn continued to struggle in the Coastal Bend, South Central Texas, and the Edwards Plateau due to the lack of moisture. Meanwhile, corn neared harvest in North East Texas. Rice progressed in the Upper Coast and some producers continued planting organic varieties.

**Fruit, Vegetable and Specialty Crops:** Vegetable progress slowed in South Texas due to hotter temperatures while irrigated melons progressed. Melons and pecans showed good progress in areas of the Southern High Plains. In North East Texas, vegetable harvest continued while melons neared closer to harvest.

**Livestock, Range and Pasture:** Supplemental feeding continued across the state. Flies continued to multiply in the Blacklands and North East Texas areas. Feral hogs continued to be nuisance to some producers in North East Texas. Topsoil and subsoil conditions were very short due to the lack of moisture. Range and pasture conditions are rated 76 percent, very poor to poor.

### Crop Progress

| Stage               | Percent of Acreage |               |               |                |
|---------------------|--------------------|---------------|---------------|----------------|
|                     | Current Week       | Previous Week | Previous Year | 5 Year Average |
| <b>Corn</b>         |                    |               |               |                |
| Planted             | 92                 | 87            | 92            | 91             |
| Emerged             | 84                 | 74            | 83            | 81             |
| Silking             | 28                 | 11            | 26            | 23             |
| <b>Cotton</b>       |                    |               |               |                |
| Planted             | 44                 | 30            | 39            | 44             |
| Squaring            | 8                  | 3             | 5             | 8              |
| <b>Peanuts</b>      |                    |               |               |                |
| Planted             | 39                 | 28            | 20            | 49             |
| <b>Rice</b>         |                    |               |               |                |
| Planted             | 96                 | 92            | 95            | 92             |
| Emerged             | 85                 | 82            | 86            | 86             |
| <b>Sorghum</b>      |                    |               |               |                |
| Planted             | 79                 | 73            | 75            | 82             |
| Headed              | 24                 | 13            | 31            | 29             |
| <b>Soybeans</b>     |                    |               |               |                |
| Planted             | 64                 | 62            | 65            | 74             |
| Emerged             | 52                 | 35            | 46            | 56             |
| <b>Sunflowers</b>   |                    |               |               |                |
| Planted             | 35                 | 20            | 18            | (N/A)          |
| <b>Winter Wheat</b> |                    |               |               |                |
| Headed              | 92                 | 86            | 95            | 96             |
| Harvested           | 10                 | 7             | 12            | 15             |
| <b>Oats</b>         |                    |               |               |                |
| Harvested           | 27                 | 15            | 13            | 27             |

(NA) Not available.

### Crop Condition

| Crop              | Percent of Acreage |      |      |      |           | Index <sup>1</sup> |      |
|-------------------|--------------------|------|------|------|-----------|--------------------|------|
|                   | Excellent          | Good | Fair | Poor | Very Poor | 2022               | 2021 |
| Corn              | 3                  | 18   | 43   | 26   | 10        | 52                 | 87   |
| Rice              | 4                  | 43   | 46   | 7    | 0         | 72                 | 76   |
| Sorghum           | 1                  | 11   | 39   | 25   | 24        | 27                 | 73   |
| Wheat             | 0                  | 5    | 16   | 25   | 54        | 23                 | 54   |
| Oats              | 1                  | 6    | 16   | 29   | 48        | 26                 | 63   |
| Range and Pasture | 1                  | 8    | 15   | 30   | 46        | 27                 | 57   |

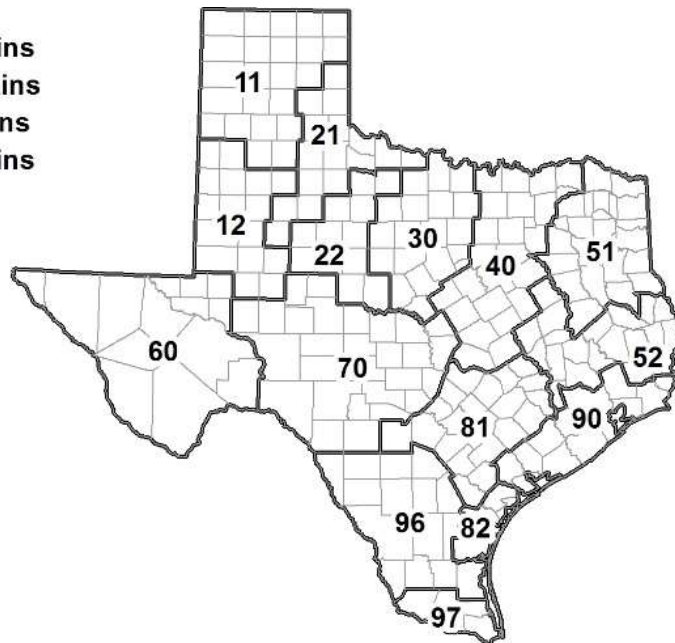
<sup>1</sup> The formula for the condition index is  $I = (5V + 25P + 60F + 90G + 110E)/100$  where I = crop condition index and V, P, F, G, E = percentage of crop rated very poor, poor, fair, good, excellent.

### Soil Moisture and Days Suitable by District

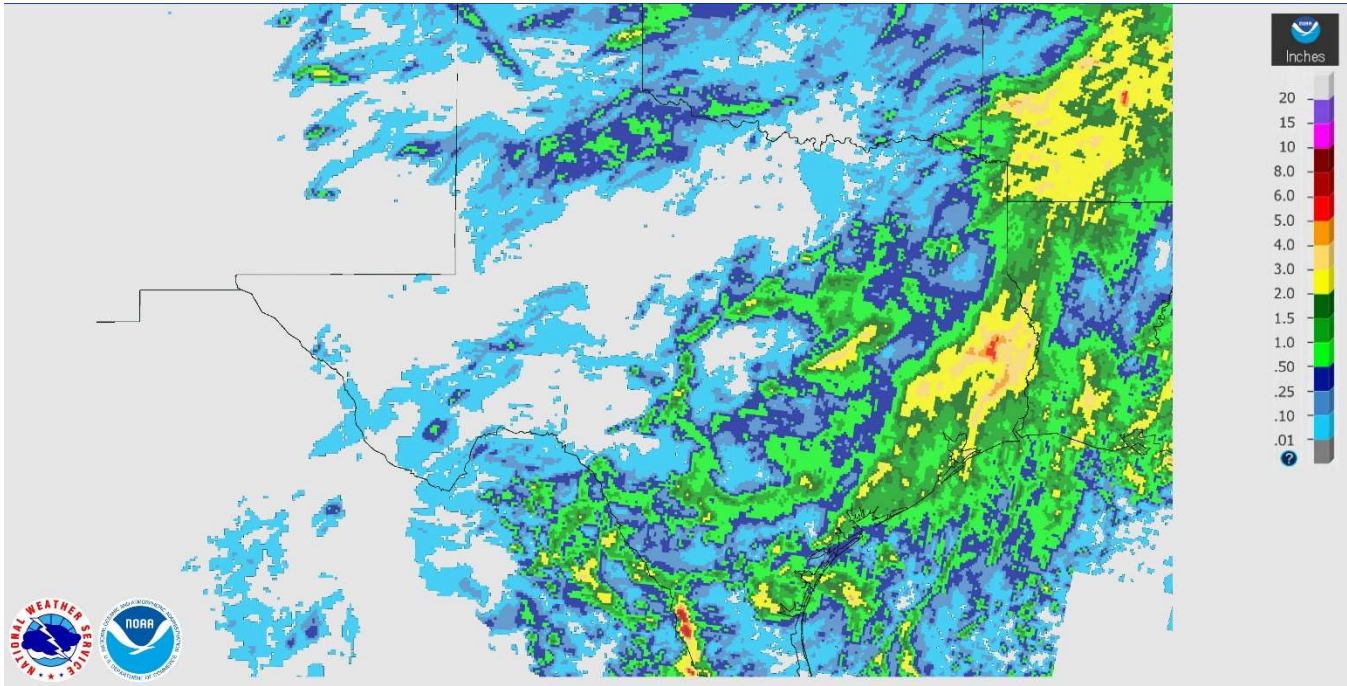
| District | Topsoil Moisture Condition by District |       |          |         | Subsoil Moisture Condition by District |       |          |         | Days Suitable for Fieldwork |
|----------|--|-------|----------|---------|--|-------|----------|---------|-----------------------------|
|          | Percentage of Acreage                  |       |          |         | Percentage of Acreage                  |       |          |         |                             |
|          | Very Short                             | Short | Adequate | Surplus | Very Short                             | Short | Adequate | Surplus |                             |
| 11       | 82                                     | 18    | 0        | 0       | 70                                     | 26    | 4        | 0       | 6.3                         |
| 12       | 81                                     | 19    | 0        | 0       | 71                                     | 28    | 1        | 0       | 5.6                         |
| 21       | 45                                     | 54    | 1        | 0       | 50                                     | 49    | 1        | 0       | 6.9                         |
| 22       | 82                                     | 18    | 0        | 0       | 97                                     | 3     | 0        | 0       | 6.8                         |
| 30       | 41                                     | 44    | 15       | 0       | 38                                     | 53    | 4        | 5       | 6.8                         |
| 40       | 23                                     | 47    | 28       | 2       | 26                                     | 44    | 29       | 1       | 6.3                         |
| 51       | 5                                      | 27    | 67       | 1       | 5                                      | 31    | 62       | 2       | 6.7                         |
| 52       | 8                                      | 34    | 56       | 2       | 11                                     | 33    | 55       | 1       | 6.5                         |
| 60       | 65                                     | 30    | 5        | 0       | 65                                     | 30    | 5        | 0       | 5.8                         |
| 70       | 86                                     | 11    | 3        | 0       | 85                                     | 13    | 2        | 0       | 7.0                         |
| 81       | 48                                     | 38    | 12       | 2       | 43                                     | 48    | 6        | 3       | 6.4                         |
| 82       | 68                                     | 29    | 3        | 0       | 69                                     | 31    | 0        | 0       | 7.0                         |
| 90       | 24                                     | 36    | 39       | 1       | 32                                     | 27    | 40       | 1       | 6.5                         |
| 96       | 55                                     | 34    | 10       | 1       | 63                                     | 26    | 11       | 0       | 6.5                         |
| 97       | 25                                     | 30    | 45       | 0       | 40                                     | 52    | 8        | 0       | 6.0                         |
| State    | 57                                     | 29    | 13       | 1       | 55                                     | 32    | 12       | 1       | 6.3                         |

### Texas Agricultural Districts

- 11 Northern High Plains
- 12 Southern High Plains
- 21 Northern Low Plains
- 22 Southern Low Plains
- 30 Cross Timbers
- 40 Blacklands
- 51 North East
- 52 South East
- 60 Trans-Pecos
- 70 Edwards Plateau
- 81 South Central
- 82 Coastal Bend
- 90 Upper Coast
- 96 South
- 97 Lower Valley

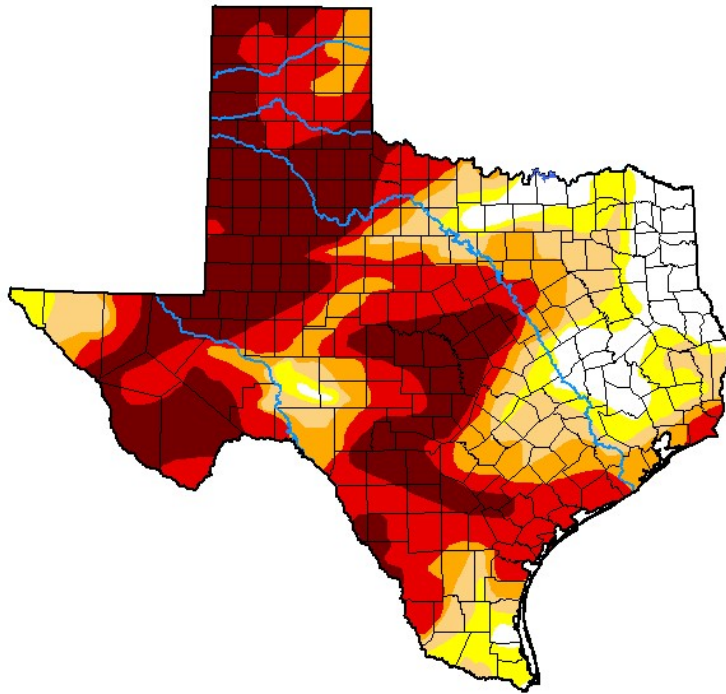


## Seven Day Observed Regional Precipitation, May 22, 2022.



Source: National Weather Service, [www.nws.noaa.gov](http://www.nws.noaa.gov)

## Drought Monitor, Valid May 17, 2022.



*Drought Conditions (Percent Area)*

|   | None  | D0-D4 | D1-D4 | D2-D4 | D3-D4 | D4    |
|---|-------|-------|-------|-------|-------|-------|
| <b>Current</b>                              | 9.57  | 90.43 | 81.42 | 69.47 | 55.79 | 28.91 |
| <b>Last Week</b><br>05-10-2022              | 10.54 | 89.46 | 79.23 | 68.09 | 52.96 | 24.53 |
| <b>3 Months Ago</b><br>02-15-2022           | 11.83 | 88.17 | 77.61 | 55.58 | 24.53 | 0.00  |
| <b>Start of Calendar Year</b><br>01-04-2022 | 7.58  | 92.42 | 79.83 | 54.25 | 16.69 | 0.00  |
| <b>Start of Water Year</b><br>09-28-2021    | 45.57 | 54.43 | 7.26  | 0.27  | 0.00  | 0.00  |
| <b>One Year Ago</b><br>05-18-2021           | 47.80 | 52.20 | 32.96 | 20.31 | 12.16 | 5.93  |

*Intensity:*

- None
- D0 Abnormally Dry
- D1 Moderate Drought
- D2 Severe Drought
- D3 Extreme Drought
- D4 Exceptional Drought

*The Drought Monitor focuses on broad-scale conditions. Local conditions may vary. For more information on the Drought Monitor, go to <https://droughtmonitor.unl.edu/About.aspx>*

*Author:*

Richard Heim  
NCEI/NOAA



[droughtmonitor.unl.edu](http://droughtmonitor.unl.edu)

Source: National Drought Mitigation Center, a partnership with USDA, U.S. Department of Commerce/NOAA, <http://droughtmonitor.unl.edu>

## Texas Crop Progress and Condition (May 2022)

USDA, National Agricultural Statistics Service, Southern Plains Regional Field Office