



---

Southern Plains Regional Field Office  
Post Office Box 70 Austin, Texas 78767  
(800) 626-3142 · FAX (855) 270-2725 · [www.nass.usda.gov/tx](http://www.nass.usda.gov/tx)

---

**Issue: TX-CW1923**

**Weekly Summary for May 22 – May 28, 2023**

**Released: May 30, 2023**

---

Rainfall continued to be received last week throughout most of the state from trace amounts to upwards of 4.00 inches. Isolated areas in the North Plains and the Trans-Pecos received up to 8.00 inches. Drought conditions ranged from none to exceptionally dry with the Edwards Plateau and the Plains being the driest. There was an average of 4.2 days suitable for fieldwork.

**Small Grains:** In the Southern High Plains winter wheat was drying down for harvest. However, the wet condition was an issue for harvest in the Southern Low Plains and Blacklands. Winter wheat condition throughout the state was rated 37 percent fair. Winter wheat harvested reached 18 percent, down 2 points from the previous year. Oats harvested reached 24 percent, down 12 points from the previous year. Oats condition was rated 39 percent fair.

**Row Crops:** In the Southern High Plains, Blacklands and South Texas, corn and sorghum crops were making a good progress. Corn silking reached 40 percent, down one point from the previous year. Sorghum headed reached 36 percent, down 3 points from the previous year. Cotton planting was falling behind due to excess rainfall in the Northern Low Plains and South Central Texas. Cotton planted reached 50 percent for the state, down 8 points from the previous year. Peanuts planted reached 45 percent, down 13 points from the previous year. Sunflowers planted reached 48 percent, up one point from the previous year. Rice emerged reached 90 percent, up 2 points from the previous year. Feral hogs continued to be an issue in North East Texas for crop producers. There were different diseases or insects found on sorghum, rice, sugar cane and cotton crops in the lower Valley.

**Fruit, Vegetable, and Specialty Crops:** In South Texas, onion harvest was almost complete while watermelon and cantaloupe growth continued at a good pace. In the lower Valley, watermelon harvest continued.

**Livestock, Range and Pasture:** Livestock was rated in a fair condition throughout most of the state. Cattle prices remained high in the Upper Coast, South East Texas and South Central Texas. Range and pasture continued to improve with a rated condition fair to good due to rainfall past week.

### Crop Progress

Stage	Percent of Acreage			
	Current Week	Previous Week	Previous Year	5 Year Average
<b>Corn</b>				
Planted	92	88	94	94
Emerged	85	77	87	87
Silking	40	30	41	35
<b>Cotton</b>				
Planted	50	35	58	54
<b>Peanuts</b>				
Planted	45	30	58	57
<b>Rice</b>				
Planted	96	93	98	96
Emerged	90	88	88	89
<b>Sorghum</b>				
Planted	83	79	81	84
Headed	36	25	33	34
<b>Soybeans</b>				
Planted	66	55	67	73
<b>Sunflowers</b>				
Planted	48	30	47	38
<b>Winter Wheat</b>				
Headed	95	92	95	97
Harvested For Grain	18	5	20	21
<b>Oats</b>				
Harvested For Grain	24	17	36	34

### Crop Condition

Crop	Percent of Acreage					Index <sup>1</sup>	
	Excellent	Good	Fair	Poor	Very Poor	2023	2022
Corn	30	45	21	4	0	87	57
Rice	12	61	24	3	0	83	75
Sorghum	18	29	49	3	1	76	44
Wheat	2	21	37	27	13	51	22
Oats	2	21	39	20	18	50	23
Range and Pasture	10	29	34	17	10	62	31

<sup>1</sup> The formula for the condition index is  $I = (5V + 25P + 60F + 90G + 110E)/100$  where I = crop condition index and V, P, F, G, E = percentage of crop rated very poor, poor, fair, good, excellent.

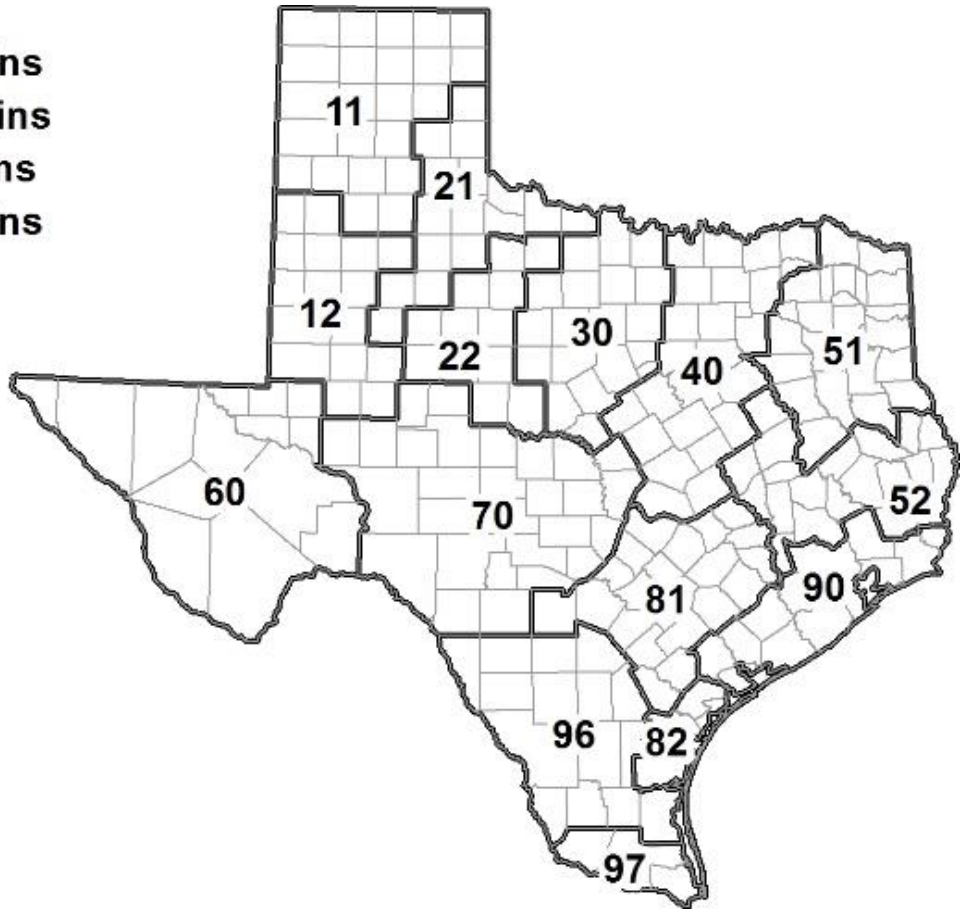
### Soil Moisture and Days Suitable by District

District	Subsoil Moisture Condition by District				Topsoil Moisture Condition by District				Days Suitable for Fieldwork
	Percentage of Acreage				Percentage of Acreage				
	Very Short	Short	Adequate	Surplus	Very Short	Short	Adequate	Surplus	
11	7	17	69	7	0	1	71	28	1.4
12	20	33	47	0	4	28	52	16	5.2
21	8	44	48	0	3	43	54	0	5.4
22	4	15	80	1	0	9	76	15	2.6
30	6	33	61	0	0	21	78	1	4.8
40	5	20	73	2	7	18	61	14	4.1
51	0	21	70	9	0	18	73	9	7.0
52	0	12	80	8	0	11	84	5	6.4
60	18	42	31	9	20	44	27	9	6.2
70	10	39	50	1	10	13	75	2	5.4
81	1	10	78	11	1	6	80	13	5.2
82	60	40	0	0	22	0	76	2	7.0
90	0	8	54	38	0	8	64	28	3.9
96	9	35	54	2	12	29	56	3	6.4
97	1	3	85	11	1	14	75	10	5.2
State	9	24	62	5	3	16	66	15	4.2

(May 2023)

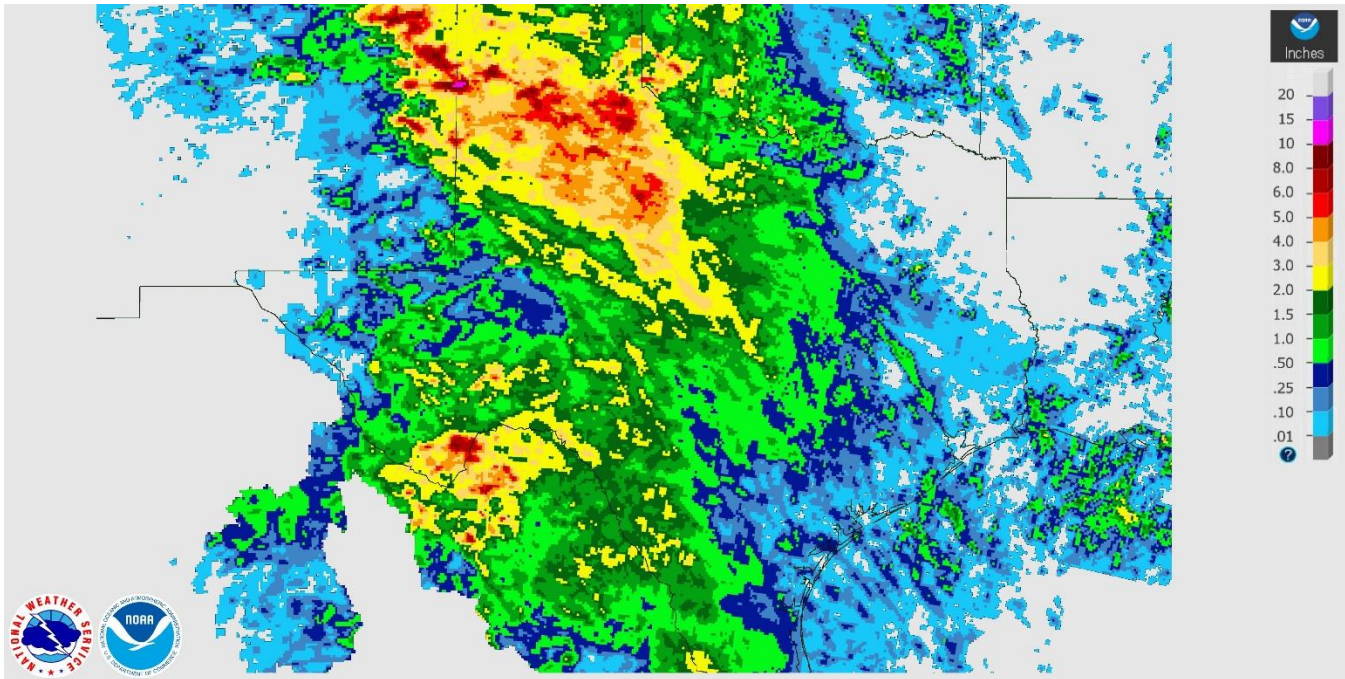
## Texas Agricultural Districts

- 11 Northern High Plains
- 12 Southern High Plains
- 21 Northern Low Plains
- 22 Southern Low Plains
- 30 Cross Timbers
- 40 Blacklands
- 51 North East
- 52 South East
- 60 Trans-Pecos
- 70 Edwards Plateau
- 81 South Central
- 82 Coastal Bend
- 90 Upper Coast
- 96 South
- 97 Lower Valley



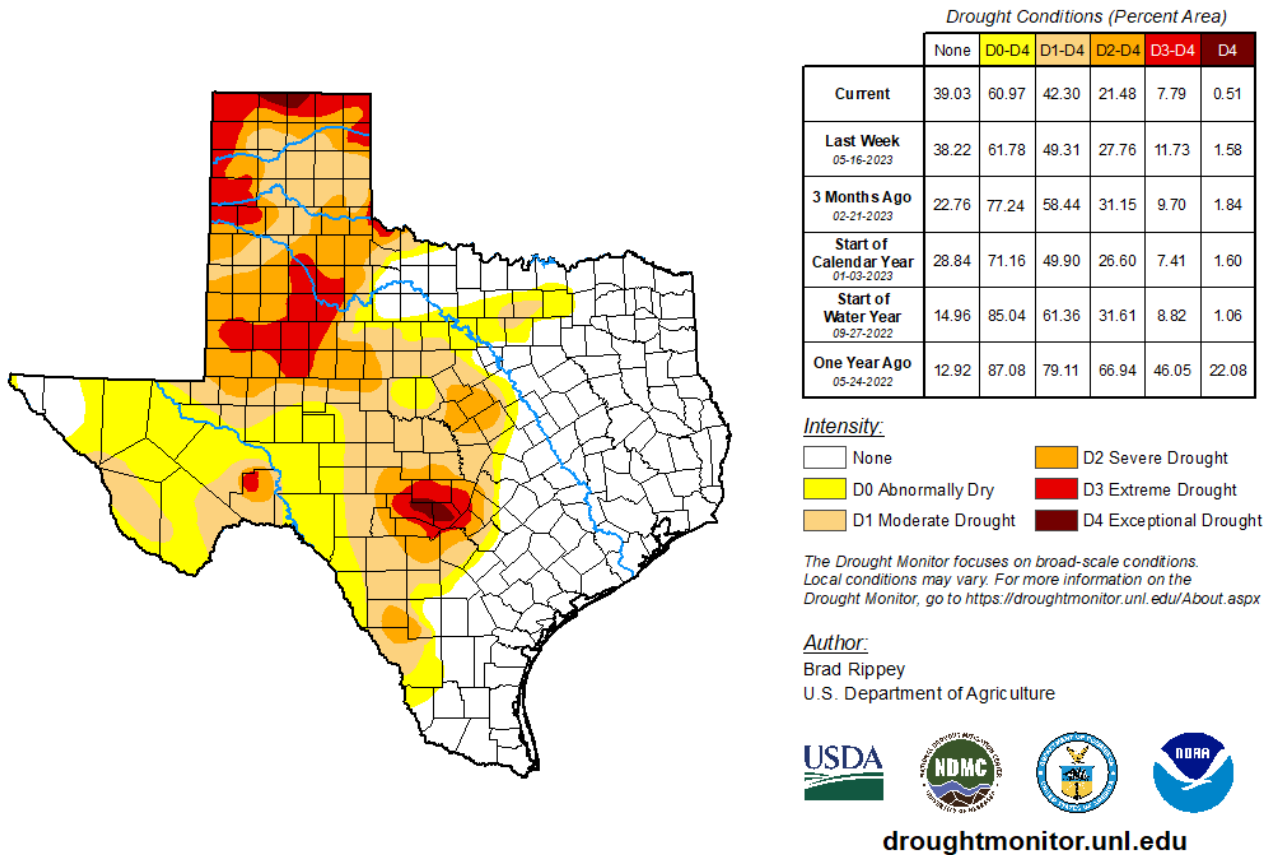
(May 2023)

## Seven Day Observed Regional Precipitation, May 28, 2023.



Source: National Weather Service, [www.nws.noaa.gov](http://www.nws.noaa.gov)

## Drought Monitor, Valid May 23, 2023.



Source: National Drought Mitigation Center, a partnership with USDA, U.S. Department of Commerce/NOAA, <http://droughtmonitor.unl.edu>

(May 2023)

USDA, National Agricultural Statistics Service, Southern Plains Regional Field Office