



Texas Crop Progress and Condition

Southern Plains Regional Field Office
Post Office Box 70 Austin, Texas 78767
(800) 626-3142 · FAX (855) 270-2725 · www.nass.usda.gov/tx

Issue: TX-CW1922

Weekly Summary for May 23 - May 29

Released: May 31, 2022

Much of the state received from trace amounts to upwards of 3.00 inches of precipitation. Isolated areas in the Southern High Plains, South Texas, and the Lower Valley received up to 6.00 inches. Drought conditions ranged from none to exceptionally dry with the Trans-Pecos, the Edwards Plateau, South Central Texas, and the Northern and Southern Plains being the driest. There was an average of 5.3 days suitable for fieldwork.

Small Grains: Winter wheat in the Low Plains, the Cross Timbers, the Blacklands, and the Edwards Plateau continued being harvested. Winter wheat in the Northern High Plains benefitted following recent precipitation.

Row Crops: Cotton planting continued throughout the state with help from recent moisture. Cotton was reported as doing well in the Blacklands, the Trans-Pecos, and the Edwards Plateau. Corn and sorghum in the Cross Timbers and the Edwards Plateau were progressing well but more moisture was needed. Rice planting in the Upper Coast continued.

Fruit, Vegetable and Specialty Crops: Pumpkin planting commenced in the Northern High Plains. Melons and pecans were progressing well in the Southern High Plains. Meanwhile, irrigated watermelon and cantaloupes in South Texas were reported in good condition. Watermelons in the Lower Valley had some damage from hail.

Livestock, Range and Pasture: Supplemental feeding continued across the state. Flies continued to multiply in the Blacklands and North East Texas areas. Goats began kidding in the Blacklands. Topsoil and subsoil conditions were very short due to the lack of moisture, but conditions improved from the previous week. Range and pasture conditions are rated 70 percent, very poor to poor.

Crop Progress

Stage	Percent of Acreage			
	Current Week	Previous Week	Previous Year	5 Year Average
Corn				
Planted	94	92	95	94
Emerged	87	84	88	87
Silked	43	28	43	35
Cotton				
Planted	60	44	52	56
Squaring	12	8	9	11
Peanuts				
Planted	61	39	36	62
Rice				
Emerged	89	85	89	89
Sorghum				
Planted	81	79	81	86
Headed	35	24	35	35
Soybeans				
Planted	67	64	67	78
Emerged	57	52	56	63
Sunflowers				
Planted	49	35	39	44
Winter Wheat				
Headed	96	92	99	98
Harvested	22	10	17	23
Oats				
Harvested	38	27	17	39

(NA) Not available.

Crop Condition

Crop	Percent of Acreage					Index ¹	
	Excellent	Good	Fair	Poor	Very Poor	2022	2021
Corn	3	25	43	20	9	57	87
Cotton	1	19	51	25	4	55	56
Peanuts	1	8	49	41	1	48	67
Rice	9	37	53	1	0	75	77
Sorghum	1	10	44	27	18	44	86
Soybeans	4	20	68	7	1	65	75
Wheat	0	5	15	22	58	22	52
Oats	1	5	12	29	53	23	60
Range and Pasture	1	10	19	28	42	31	61

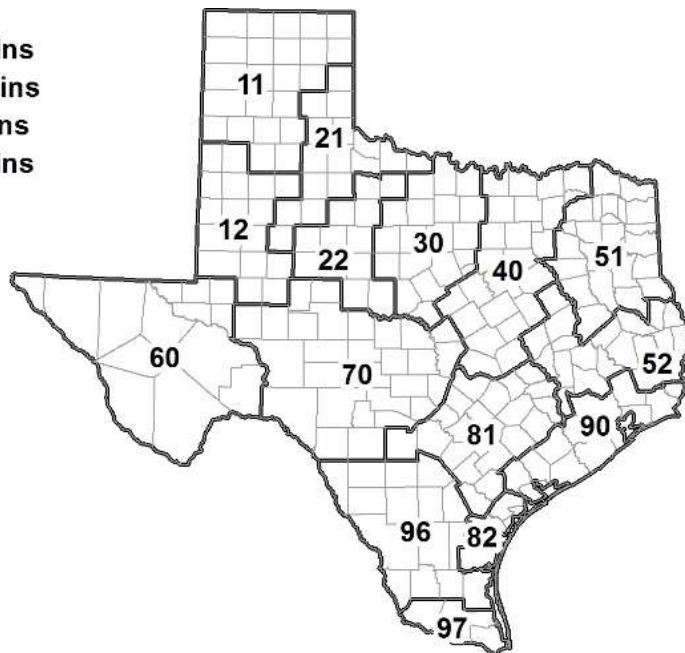
¹ The formula for the condition index is $I = (5V + 25P + 60F + 90G + 110E)/100$ where I = crop condition index and V, P, F, G, E = percentage of crop rated very poor, poor, fair, good, excellent.

Soil Moisture and Days Suitable by District

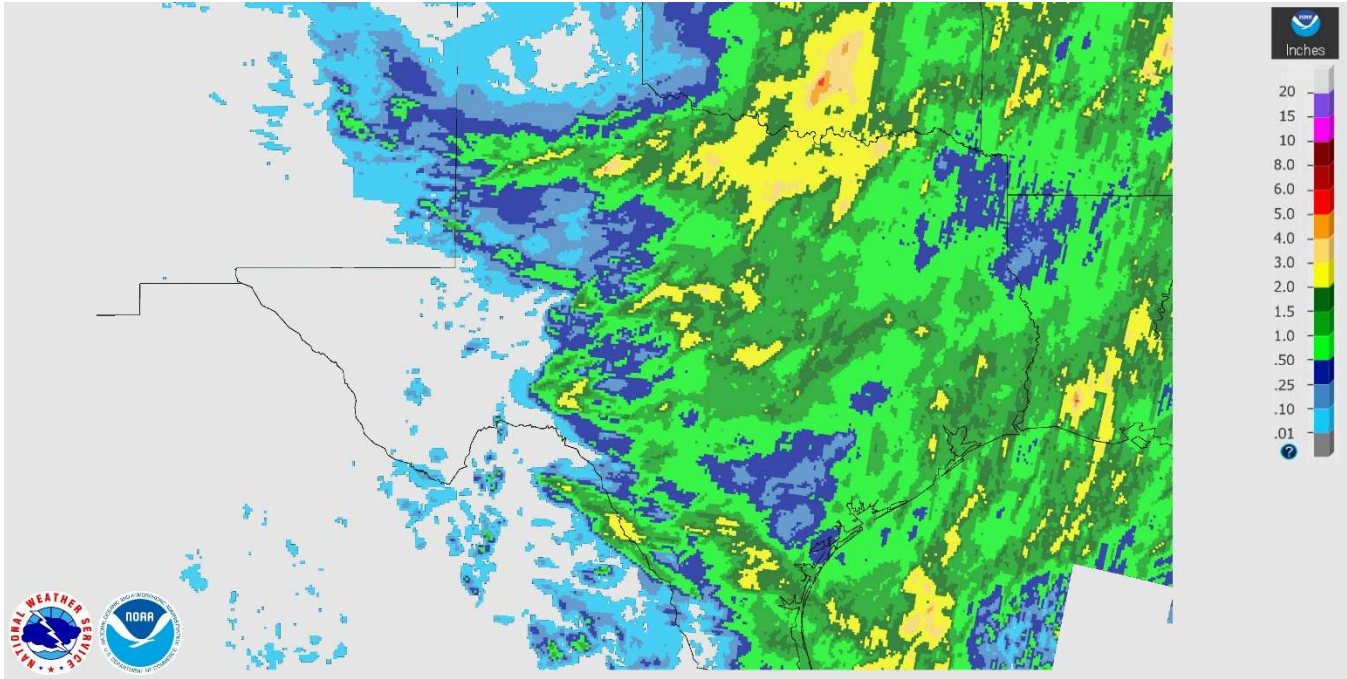
District	Topsoil Moisture Condition by District				Subsoil Moisture Condition by District				Days Suitable for Fieldwork
	Percentage of Acreage				Percentage of Acreage				
	Very Short	Short	Adequate	Surplus	Very Short	Short	Adequate	Surplus	
11	41	44	15	0	55	31	14	0	4.9
12	97	3	0	0	97	3	0	0	6.3
21	30	45	25	0	38	61	1	0	5.4
22	71	16	13	0	83	17	0	0	5.4
30	15	50	35	0	34	39	27	0	4.9
40	22	47	31	0	33	34	32	1	5.0
51	3	31	66	0	4	32	64	0	6.8
52	2	22	71	5	2	23	74	1	6.0
60	48	16	36	0	47	17	36	0	6.3
70	44	47	9	0	30	60	10	0	5.3
81	27	71	2	0	44	37	19	0	6.1
82	47	53	0	0	47	49	4	0	6.2
90	15	32	44	9	22	39	30	9	4.2
96	30	14	47	9	36	13	51	0	3.7
97	33	45	18	4	20	20	60	0	2.5
State	45	34	20	1	51	29	19	1	5.3

Texas Agricultural Districts

- 11 Northern High Plains
- 12 Southern High Plains
- 21 Northern Low Plains
- 22 Southern Low Plains
- 30 Cross Timbers
- 40 Blacklands
- 51 North East
- 52 South East
- 60 Trans-Pecos
- 70 Edwards Plateau
- 81 South Central
- 82 Coastal Bend
- 90 Upper Coast
- 96 South
- 97 Lower Valley

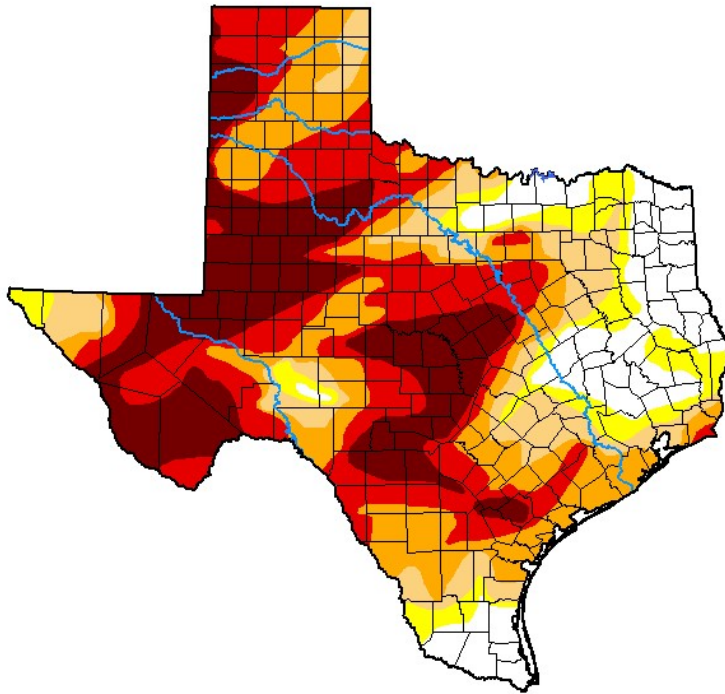


Seven Day Observed Regional Precipitation, May 29, 2022.



Source: National Weather Service, www.nws.noaa.gov

Drought Monitor, Valid May 24, 2022.



Drought Conditions (Percent Area)

	None	D0-D4	D1-D4	D2-D4	D3-D4	D4
Current	12.92	87.08	79.11	66.94	46.05	22.08
Last Week 05-17-2022	9.57	90.43	81.42	69.47	55.79	28.91
3 Months Ago 02-22-2022	7.67	92.33	79.06	52.89	22.44	0.00
Start of Calendar Year 01-04-2022	7.58	92.42	79.83	54.25	16.69	0.00
Start of Water Year 09-28-2021	45.57	54.43	7.26	0.27	0.00	0.00
One Year Ago 05-25-2021	61.55	38.45	25.29	15.87	9.06	4.95

Intensity:

- None
- D0 Abnormally Dry
- D1 Moderate Drought
- D2 Severe Drought
- D3 Extreme Drought
- D4 Exceptional Drought

The Drought Monitor focuses on broad-scale conditions. Local conditions may vary. For more information on the Drought Monitor, go to <https://droughtmonitor.unl.edu/About.aspx>

Author:

Richard Heim
NCEI/NOAA



droughtmonitor.unl.edu

Source: National Drought Mitigation Center, a partnership with USDA, U.S. Department of Commerce/NOAA, <http://droughtmonitor.unl.edu>

Texas Crop Progress and Condition (May 2022)

USDA, National Agricultural Statistics Service, Southern Plains Regional Field Office