



Texas Crop Progress and Condition

Southern Plains Regional Field Office
Post Office Box 70 Austin, Texas 78767
(800) 626-3142 · FAX (855) 270-2725 · www.nass.usda.gov/tx

Issue: TX-CW2223

Weekly Summary for June 12- June 18

Released: June 20, 2023

Sporadic rainfall continued across parts of the state which resulted in trace amounts to 2.00 inches of precipitation. Isolated areas in the Blacklands and North East Texas received up to 8.00 inches. Drought conditions ranged from none to exceptionally dry with the area between the Edwards Plateau and South Central Texas being the driest. There was an average of 6.1 days suitable for fieldwork.

Small Grains: Winter wheat and oat harvest continued in most districts of the state. Winter wheat condition throughout the state was rated 30 percent good. Winter wheat harvested reached 62 percent, down 7 points from the previous year. Oats harvested reached 71 percent, down 9 points from the previous year. Oats condition was rated 45 percent fair.

Row Crops: Corn and sorghum were progressing well in most areas of the state. Corn silking reached 62 percent, up one point from the previous year. Sorghum headed reached 49 percent, the same as the previous year. Cotton planting continued in the Low Plains. Cotton planted reached 84 percent for the state, down 11 points from the previous year. Producers were converting lost cotton to sorghum in the Northern High Plains. Peanuts planted reached 86 percent, down 4 points from the previous year. Sunflowers planted reached 76 percent, up 2 points from the previous year. Rice headed reached 17 percent, up 2 points from the previous year. Soybeans emerged reached 78 percent, the same as the previous year.

Fruit, Vegetable, and Specialty Crops: Watermelons and cantaloupes were progressing well in the Southern High Plains and South Texas. Citrus and sugarcane producers began irrigation in the Lower Valley.

Livestock, Range and Pasture: Livestock were in good condition. Producers were keeping a constant watch for insects in pastures and hayfields in South East Texas. Range and pasture were rated in fair to good condition.

Crop Progress

Stage	Percent of Acreage			
	Current Week	Previous Week	Previous Year	5 Year Average
Corn				
Emerged	96	92	95	96
Silked	62	59	61	55
Dough	20	10	17	16
Cotton				
Planted	84	72	95	93
Squaring	17	12	22	20
Setting Bolls	5	(NA)	9	6
Peanuts				
Planted	86	76	90	87
Rice				
Headed	17	5	15	14
Sorghum				
Planted	95	92	94	96
Headed	49	42	49	51
Soybeans				
Planted	87	82	87	90
Emerged	78	65	78	80
Blooming	21	10	24	25
Sunflowers				
Planted	76	72	74	73
Winter Wheat				
Harvested	62	42	69	62
Oats				
Harvested	71	60	80	79

(NA) Not available.

Crop Condition

Crop	Percent of Acreage					Index ¹	
	Excellent	Good	Fair	Poor	Very Poor	2023	2022
Corn	20	50	25	5	0	83	57
Cotton	4	26	38	20	12	56	49
Peanuts	8	49	34	9	0	76	57
Rice	3	76	19	2	0	84	67
Sorghum	14	36	38	8	4	73	51
Soybeans	11	43	34	9	3	74	64
Wheat	9	30	29	21	11	60	21
Oats	2	26	45	8	19	56	26
Range and Pasture	8	30	32	19	11	60	29

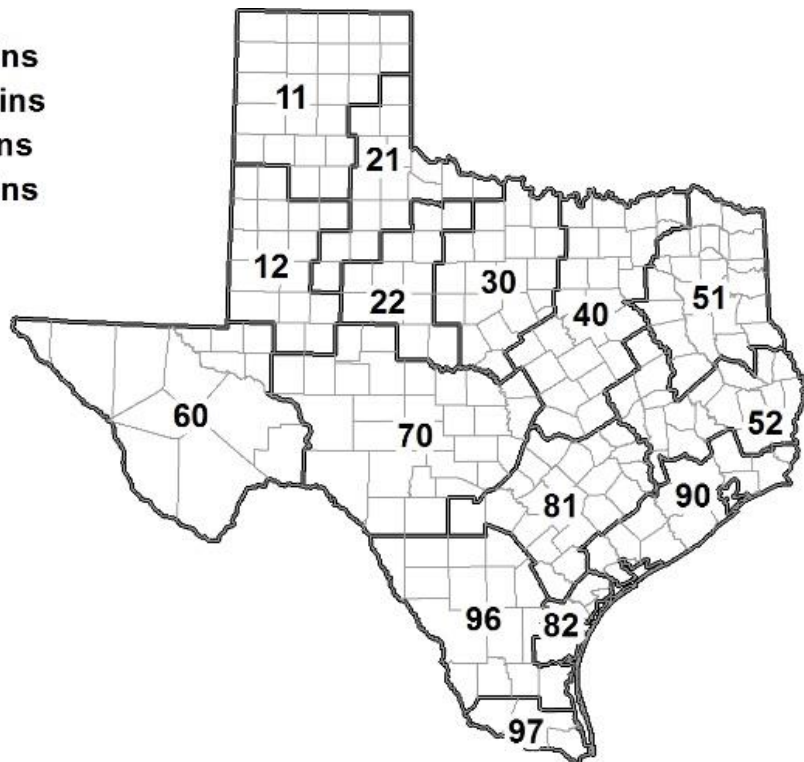
¹ The formula for the condition index is $I = (5V + 25P + 60F + 90G + 110E)/100$ where I = crop condition index and V, P, F, G, E = percentage of crop rated very poor, poor, fair, good, excellent.

Soil Moisture and Days Suitable by District

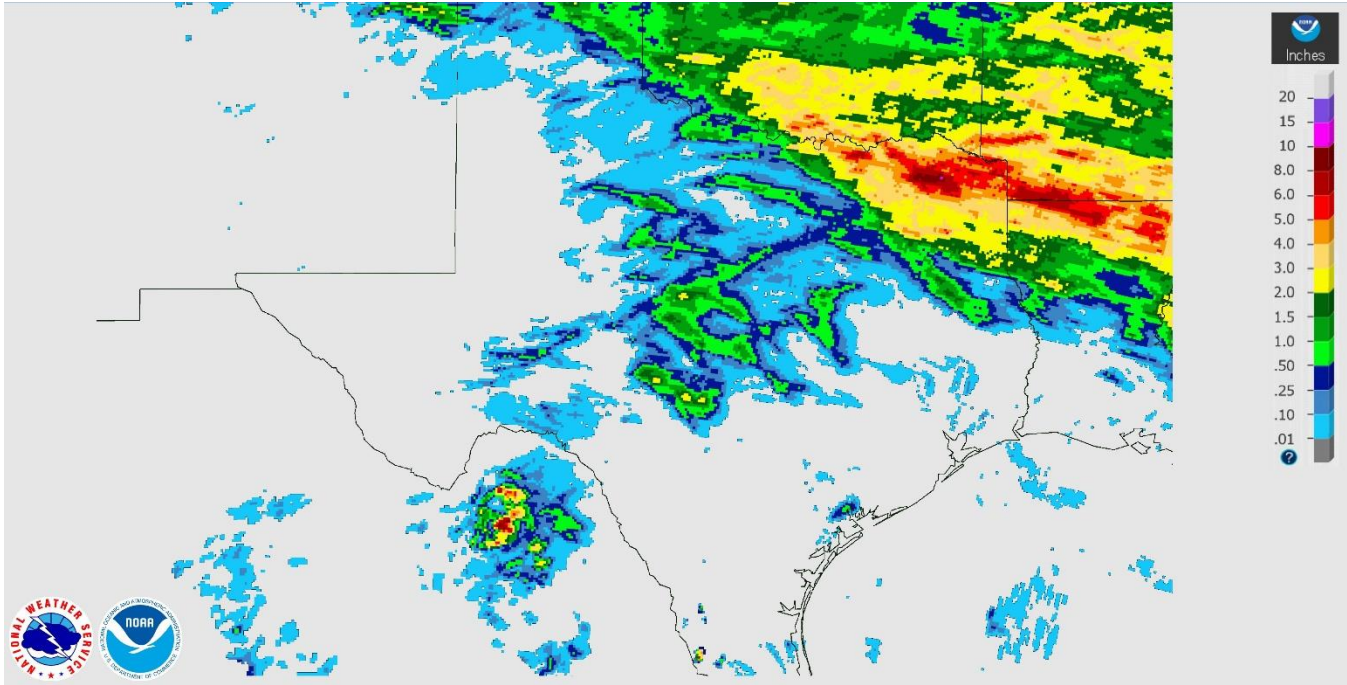
District	Subsoil Moisture Condition by District				Topsoil Moisture Condition by District				Days Suitable for Fieldwork
	Percentage of Acreage				Percentage of Acreage				
	Very Short	Short	Adequate	Surplus	Very Short	Short	Adequate	Surplus	
11	2	6	75	17	2	4	73	21	6.3
12	11	17	63	9	2	25	68	5	7.0
21	19	20	57	4	8	18	67	7	5.9
22	0	17	82	1	0	22	77	1	6.3
30	14	31	55	0	6	41	48	5	6.3
40	2	31	52	15	5	31	48	16	4.2
51	4	13	63	20	2	13	65	20	4.5
52	3	34	54	9	3	33	59	5	5.8
60	10	32	51	7	11	31	51	7	6.3
70	32	26	42	0	32	47	21	0	6.8
81	0	27	68	5	2	42	48	8	6.3
82	70	30	0	0	100	0	0	0	7.0
90	6	30	62	2	11	55	31	3	6.6
96	28	49	23	0	33	56	11	0	6.1
97	4	23	68	5	4	62	31	3	7.0
State	9	21	61	9	8	26	56	10	6.1

Texas Agricultural Districts

- 11 Northern High Plains**
- 12 Southern High Plains**
- 21 Northern Low Plains**
- 22 Southern Low Plains**
- 30 Cross Timbers**
- 40 Blacklands**
- 51 North East**
- 52 South East**
- 60 Trans-Pecos**
- 70 Edwards Plateau**
- 81 South Central**
- 82 Coastal Bend**
- 90 Upper Coast**
- 96 South**
- 97 Lower Valley**

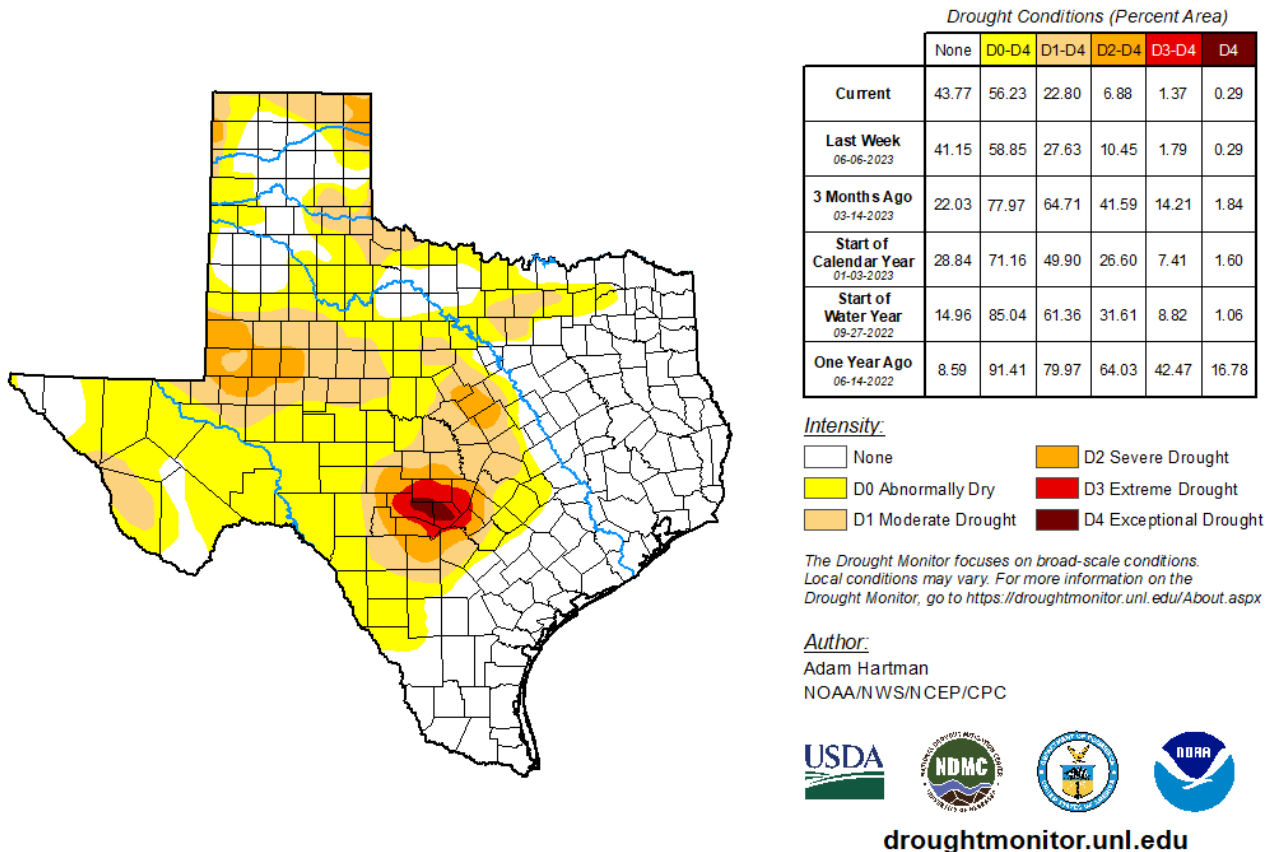


Seven Day Observed Regional Precipitation, June 18, 2023.



Source: National Weather Service, www.nws.noaa.gov

Drought Monitor, Valid June 13, 2023.



Source: National Drought Mitigation Center, a partnership with USDA, U.S. Department of Commerce/NOAA, <http://droughtmonitor.unl.edu>

Texas Crop Progress and Condition (June 2023)

USDA, National Agricultural Statistics Service, Southern Plains Regional Field Office