



## Texas Crop Progress and Condition

Southern Plains Regional Field Office  
Post Office Box 70 Austin, Texas 78767  
(800) 626-3142 · FAX (855) 270-2725 · [www.nass.usda.gov/tx](http://www.nass.usda.gov/tx)

**Issue: TX-CW2323**

**Weekly Summary for June 19- June 25**

**Released: June 26, 2023**

Some areas of Texas received from trace amounts to 2.00 inches of precipitation. Isolated areas in the Low Plains, the Edwards Plateau and East Texas received up to 3.00 inches. Scattered storms with hail and strong wind were reported in the Blacklands, East Texas and the Southern Low Plains with one report of a Tornado in the Northern Low Plains. Extremely high temperatures of over 100 degrees Fahrenheit were observed in most of the state. Drought conditions ranged from none to exceptionally dry with areas between the Edwards Plateau and South Central Texas being the driest. There was an average of 6.3 days suitable for fieldwork.

**Small Grains:** Oats harvest continued in most districts of the state. In some areas of the Plains winter wheat still was being harvested for grain. Some fields were behind typical harvesting dates due to the rains received a few weeks ago. Winter wheat harvested reached 74 percent, down 5 points from the previous year. Oats harvested reached 80 percent, down 6 points from the previous year.

**Row Crops:** In the Upper Coast, the Coastal Bend and the Lower Valley, corn and sorghum crops were drying down quickly. Corn silking reached 67 percent, down two points from the previous year. Sorghum headed reached 51 percent, down eight points from the previous year. Cotton planting continued falling behind in the Northern High Plains. Cotton planted reached 93 percent for the state, down 6 points from the previous year. Peanuts planted reached 92 percent, down 2 points from the previous year. Sunflowers planted reached 80 percent, the same as the previous year. Rice headed reached 25 percent, down 5 points from the previous year. Soybean emerged reached 83 percent, down 6 points from the previous year.

**Fruit, Vegetable, and Specialty Crops:** In the Lower Valley, watermelon and cantaloupe were in good condition. Walnut caterpillars were damaging pecan orchards in the Edwards Plateau.

**Livestock, Range and Pasture:** Supplemental feeding of livestock continued due to heat condition in the Lower Valley and South Texas. Hay harvest was underway. Cattle prices remained high in most of the livestock districts. Range and pasture condition were rated poor to fair.

### Crop Progress

Stage	Percent of Acreage			
	Current Week	Previous Week	Previous Year	5 Year Average
<b>Corn</b>				
Silked	67	62	69	61
Dough	27	20	33	31
<b>Cotton</b>				
Planted	93	84	99	98
Squaring	22	17	28	27
<b>Peanuts</b>				
Planted	92	86	94	92
Pegging	3	1	5	3
<b>Rice</b>				
Headed	25	17	30	29
<b>Sorghum</b>				
Headed	51	49	59	58
Coloring	10	(NA)	23	36
<b>Soybeans</b>				
Planted	92	87	94	94
Emerged	83	78	89	88
Blooming	28	21	38	36
<b>Sunflowers</b>				
Planted	80	76	80	79
Harvested	7	2	6	9
<b>Winter Wheat</b>				
Harvested	74	62	79	75
<b>Oats</b>				
Harvested	80	71	86	87

(NA) Not available.

### Crop Condition

Crop	Percent of Acreage					Index <sup>1</sup>	
	Excellent	Good	Fair	Poor	Very Poor	2023	2022
Corn	16	47	29	7	1	79	53
Cotton	4	28	38	19	11	58	45
Peanuts	7	47	39	6	1	75	62
Rice	3	70	23	4	0	81	73
Sorghum	12	45	35	6	2	76	48
Soybeans	11	37	38	10	4	71	67
Wheat	9	30	29	21	11	60	21
Oats	2	26	45	8	19	56	26
Range and Pasture	7	24	26	26	17	52	27

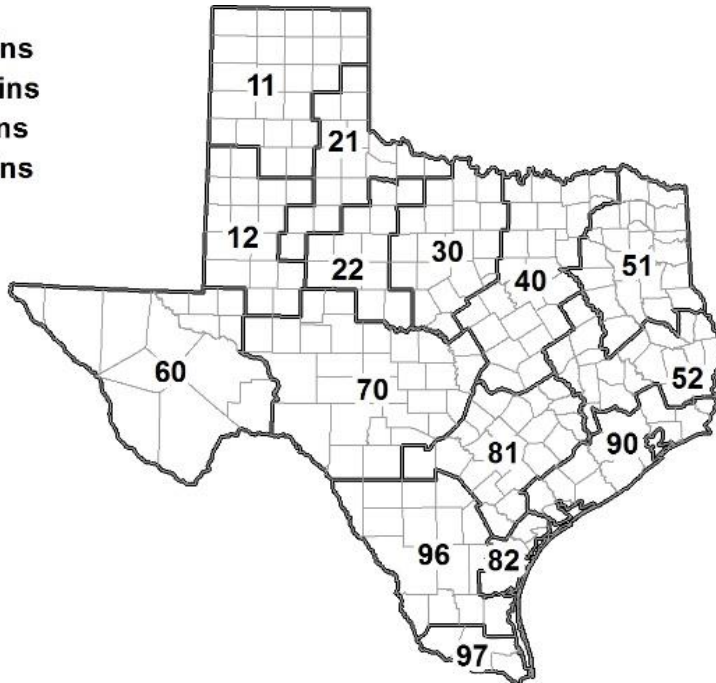
<sup>1</sup> The formula for the condition index is  $I = (5V + 25P + 60F + 90G + 110E)/100$  where I = crop condition index and V, P, F, G, E = percentage of crop rated very poor, poor, fair, good, excellent.

### Soil Moisture and Days Suitable by District

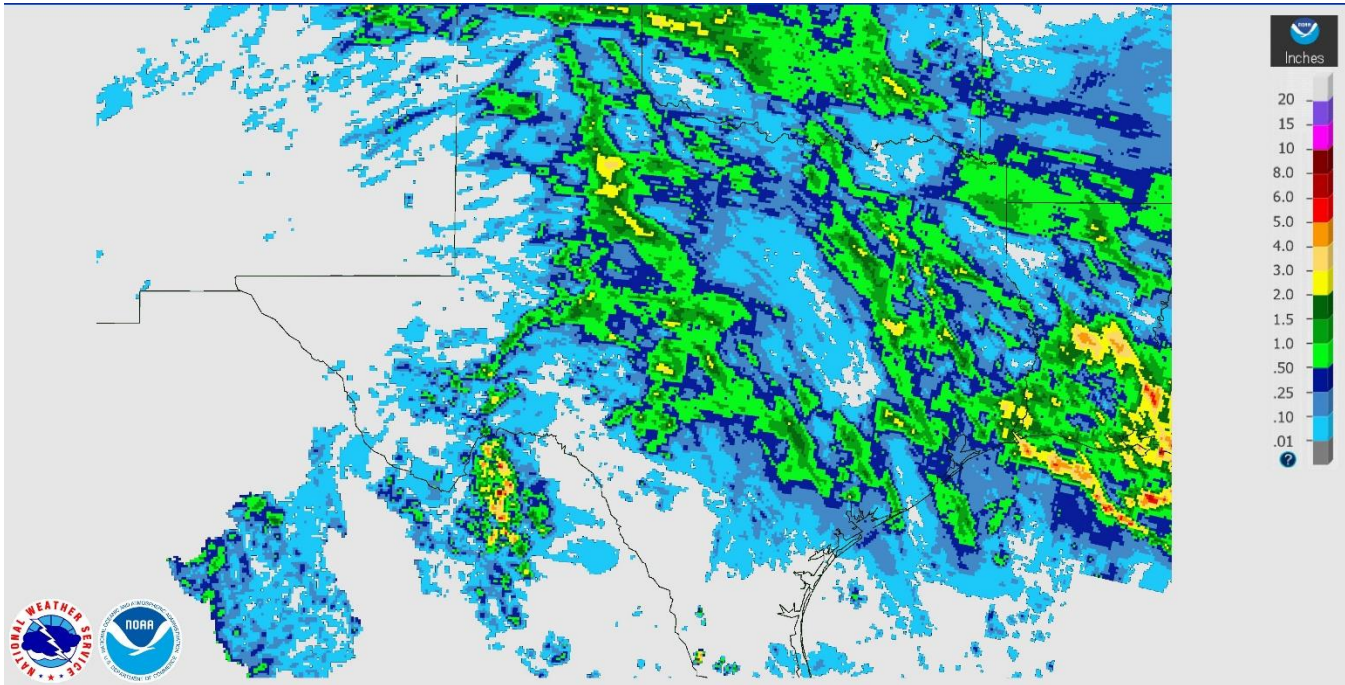
District	Subsoil Moisture Condition by District				Topsoil Moisture Condition by District				Days Suitable for Fieldwork
	Percentage of Acreage				Percentage of Acreage				
	Very Short	Short	Adequate	Surplus	Very Short	Short	Adequate	Surplus	
11	3	14	79	4	5	12	70	13	5.5
12	37	40	22	1	11	71	18	0	7.0
21	27	25	47	1	29	38	32	1	6.6
22	0	24	76	0	11	39	48	2	6.0
30	14	38	47	1	8	51	41	0	6.6
40	6	41	49	4	10	49	37	4	5.8
51	1	14	69	16	1	16	69	14	6.7
52	3	29	68	0	4	37	59	0	6.1
60	0	100	0	0	0	100	0	0	7.0
70	30	26	44	0	30	50	20	0	6.9
81	1	39	55	5	3	54	35	8	6.3
82	23	44	33	0	32	53	15	0	7.0
90	9	43	47	1	18	50	31	1	6.3
96	31	48	21	0	37	54	9	0	6.2
97	6	30	63	1	9	65	26	0	7.0
State	14	31	52	3	12	44	40	4	6.3

### Texas Agricultural Districts

- 11 Northern High Plains
- 12 Southern High Plains
- 21 Northern Low Plains
- 22 Southern Low Plains
- 30 Cross Timbers
- 40 Blacklands
- 51 North East
- 52 South East
- 60 Trans-Pecos
- 70 Edwards Plateau
- 81 South Central
- 82 Coastal Bend
- 90 Upper Coast
- 96 South
- 97 Lower Valley

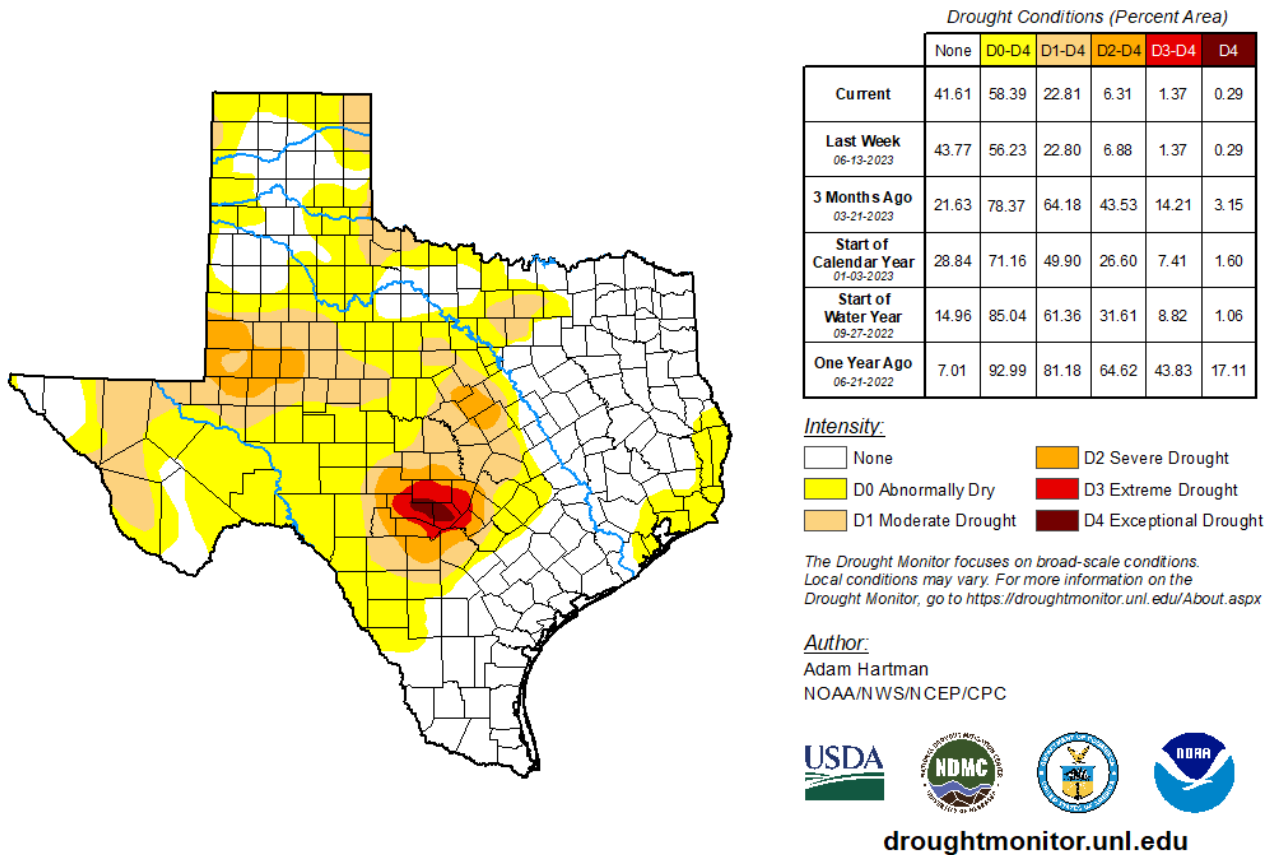


## Seven Day Observed Regional Precipitation, June 25, 2023.



Source: National Weather Service, [www.nws.noaa.gov](http://www.nws.noaa.gov)

## Drought Monitor, Valid June 20, 2023.



Source: National Drought Mitigation Center, a partnership with USDA, U.S. Department of Commerce/NOAA, <http://droughtmonitor.unl.edu>

## Texas Crop Progress and Condition (June 2023)

USDA, National Agricultural Statistics Service, Southern Plains Regional Field Office