



Texas Crop Progress and Condition

Southern Plains Regional Field Office
Post Office Box 70 Austin, Texas 78767
(800) 626-3142 · FAX (855) 270-2725 · www.nass.usda.gov/tx

Issue: TX-CW2321

Weekly Summary for June 21-June 27

Released: June 28, 2021

Most of the state received from trace amounts to upwards of 2.0 inches of precipitation. Some areas in the High and Low Plains, the Trans-Pecos, and South East Texas received up to 5.0 inches. There were 6.2 days suitable for fieldwork.

Small Grains: Winter wheat harvested for grain reached 75 percent, down 19 points from the previous year and down 7 points from normal. Winter wheat harvest in the High and Low Plains continued. Oats harvested for grain reached 89 percent, down 3 points from the previous year but unchanged from normal. Farmers across the state continued cutting and baling hay.

Row Crops: Corn silking reached 58 percent, down 3 points from the previous year but up 1 point from normal. Corn in the Lower Valley was progressing well and nearing harvest. Cotton squaring reached 29 percent, down 1 point from the previous year but up 2 points from normal. Producers worked on spraying cotton fields in the Upper Coast. Peanuts planted reached 94 percent, unchanged from the previous year but down 2 points from normal. Rice headed reached 32 percent, down 18 points from the previous year and down 5 points from normal. Rice in the Upper Coast was progressing well. Sorghum coloring reached 41 percent, down 2 points from the previous year but up 1 point from normal. Soybeans blooming reached 40 percent, up 2 points from the previous year but unchanged from normal. Cotton and soybeans in the Blacklands were progressing better with the recent sunshine. Sunflowers planted reached 83 percent, up 3 points from the previous year but unchanged from normal. Sunflower and grain sorghum harvest in the Lower Valley had begun.

Fruit, Vegetable and Specialty Crops: Pecans in the Trans-Pecos were progressing well. Irrigated watermelon and cantaloupe in South Texas also progressed well.

Livestock, Range and Pasture: Insects were bothering livestock in the Northern High Plains, the Cross Timbers, the Blacklands, and East Texas. Hay grazing season in the Trans-Pecos commenced. Pasture and range condition was rated mostly good to fair, although conditions varied across the state.

Crop Condition

Crop	Percent of Acreage					Index ¹	
	Excellent	Good	Fair	Poor	Very Poor	2021	2020
Corn	26	50	20	2	2	86	75
Cotton	8	28	55	8	1	69	53
Peanuts	3	30	65	2	0	70	72
Rice	16	56	26	1	1	84	86
Sorghum	27	47	24	2	0	87	63
Soybeans	11	41	42	5	1	76	79
Range and Pasture	14	33	23	18	12	64	57

¹ The formula for the condition index is $I = (5V + 25P + 60F + 90G + 110E)/100$ where I = crop condition index and V, P, F, G, E = percentage of crop rated very poor, poor, fair, good, excellent.

Crop Progress

Stage	Percent of Acreage			
	Current Week	Previous Week	Previous Year	5 Year Average
Corn				
Silked	67	57	61	57
Dough	35	20	38	37
Dented	12	6	(NA)	16
Cotton				
Squaring	29	20	30	27
Setting Bolls	10	6	13	10
Peanuts				
Planted	90	85	94	96
Pegging	5	1	1	6
Rice				
Headed	32	19	50	37
Sorghum				
Headed	63	52	63	60
Coloring	41	36	43	40
Mature	15	9	(NA)	14
Soybeans				
Planted	95	90	96	97
Emerged	90	85	87	92
Blooming	40	30	38	40
Sunflowers				
Planted	83	75	80	83
Harvested	7	(NA)	7	21
Winter Wheat				
Harvested	75	58	94	82
Oats				
Harvested	86	76	92	89

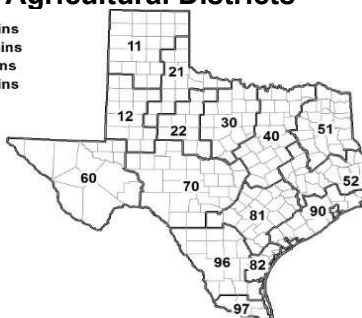
(NA) Not available.

Soil Moisture and Days Suitable by District

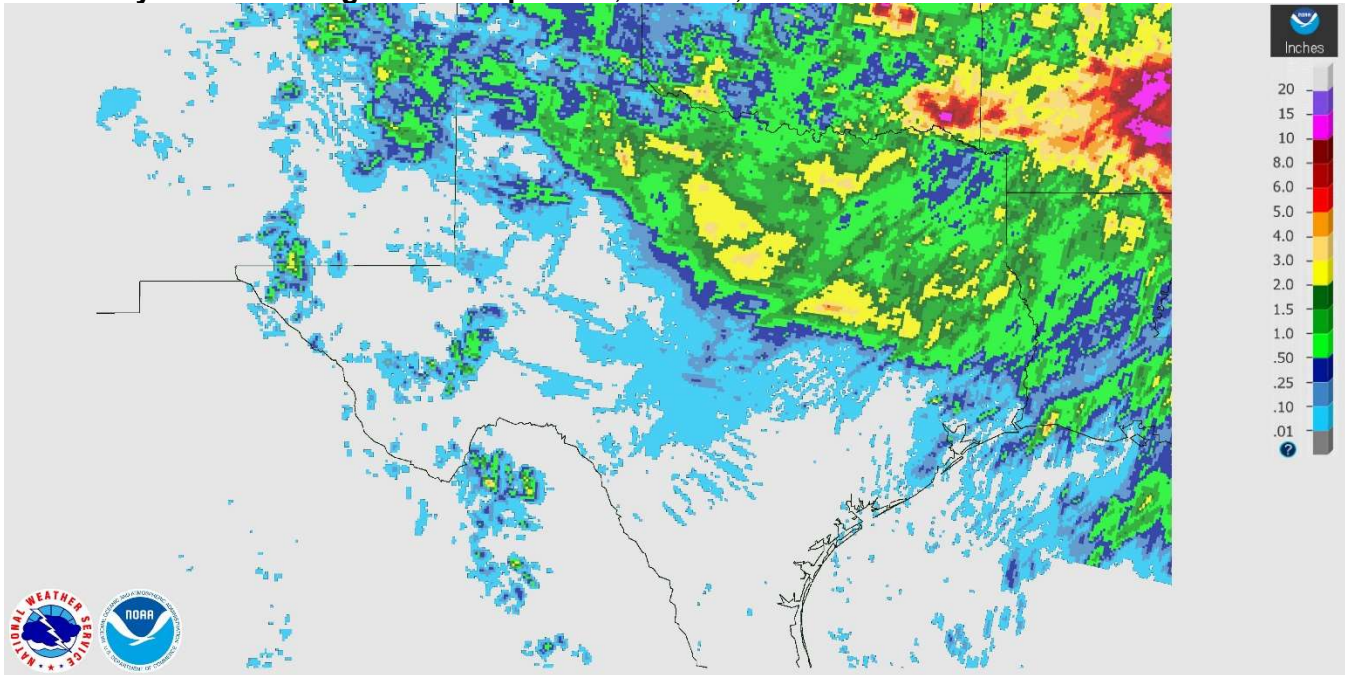
District	Topsoil Moisture Condition by District				Subsoil Moisture Condition by District				Days Suitable for Fieldwork
	Percentage of Acreage				Percentage of Acreage				
	Very Short	Short	Adequate	Surplus	Very Short	Short	Adequate	Surplus	
11	22	25	53	0	17	29	54	0	5.9
12	0	43	57	0	0	50	50	0	7.0
21	0	32	63	5	0	12	88	0	5.4
22	0	17	69	14	0	13	69	18	5.5
30	3	13	80	4	3	7	85	5	6.6
40	1	29	66	4	1	11	81	7	6.8
51	4	24	63	9	6	19	67	8	6.8
52	0	36	54	10	0	20	74	6	6.6
60	34	33	33	0	35	35	30	0	6.0
70	35	27	37	1	21	27	51	1	5.9
81	0	31	66	3	0	16	81	3	6.7
82	0	8	81	11	0	0	89	11	5.4
90	0	12	61	27	0	4	39	57	4.6
96	9	28	60	3	7	28	63	2	6.6
97	4	30	59	7	3	9	85	3	5.4
State	7	28	60	5	5	23	65	7	6.2

Texas Agricultural Districts

- 11 Northern High Plains
- 12 Southern High Plains
- 21 Northern Low Plains
- 22 Southern Low Plains
- 30 Cross Timbers
- 40 Blacklands
- 51 North East
- 52 South East
- 60 Trans-Pecos
- 70 Edwards Plateau
- 81 South Central
- 82 Coastal Bend
- 90 Upper Coast
- 96 South
- 97 Lower Valley

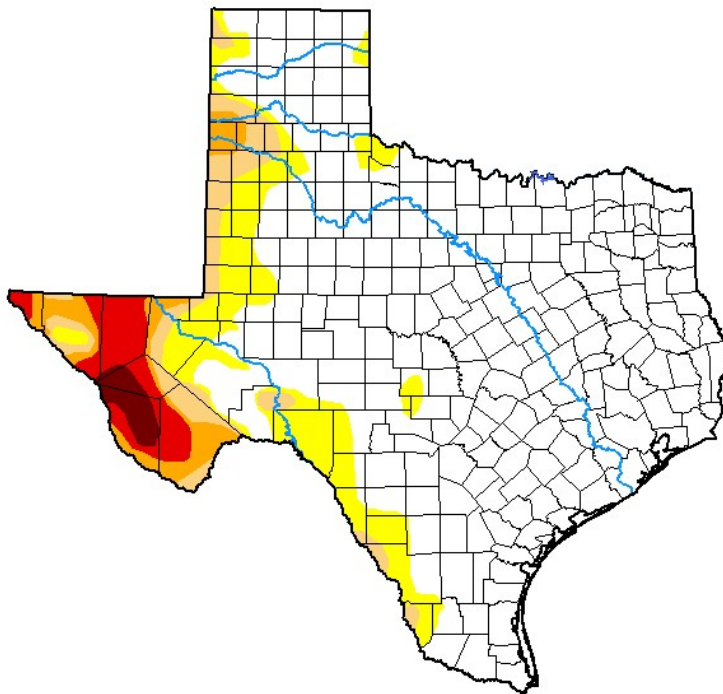


Seven Day Observed Regional Precipitation, June 27, 2021.



Source: National Weather Service, www.nws.noaa.gov.

Drought Monitor, Valid June 22, 2021.



Drought Conditions (Percent Area)

	None	D0-D4	D1-D4	D2-D4	D3-D4	D4
Current	76.32	23.68	12.61	7.64	4.47	1.16
Last Week 06-15-2021	78.04	21.96	12.44	7.64	4.47	1.16
3 Months Ago 03-23-2021	9.70	90.30	67.92	36.19	20.42	6.91
Start of Calendar Year 12-29-2020	8.80	91.20	81.11	50.33	30.09	13.03
Start of Water Year 09-29-2020	57.35	42.65	31.96	20.91	12.02	3.29
One Year Ago 06-23-2020	47.21	52.79	24.82	9.17	1.38	0.00

Intensity:

- None
- D0 Abnormally Dry
- D1 Moderate Drought
- D2 Severe Drought
- D3 Extreme Drought
- D4 Exceptional Drought

The Drought Monitor focuses on broad-scale conditions. Local conditions may vary. For more information on the Drought Monitor, go to <https://droughtmonitor.unl.edu/About.aspx>

Author:

Curtis Riganti
National Drought Mitigation Center



droughtmonitor.unl.edu

Source: National Drought Mitigation Center, a partnership with USDA, U.S. Department of Commerce/NOAA, <http://droughtmonitor.unl.edu>.