



Texas Crop Progress and Condition

Southern Plains Regional Field Office
Post Office Box 70 Austin, Texas 78767
(800) 626-3142 · FAX (855) 270-2725 · www.nass.usda.gov/tx

Issue: TX-CW2623

Weekly Summary for July 10- July 16

Released: July 17, 2023

Conditions in the Southern part of Texas were mostly hot and dry during the past week. Rainfall mainly occurred only in the Northern part of Texas from trace amounts to 2.00 inches of precipitation. Isolated areas in the Blacklands and North East Texas received up to 6.00 inches. Drought conditions ranged from none to exceptionally dry with areas in the Edwards Plateau being the driest. There was an average of 6.0 days suitable for fieldwork.

Small Grains: Winter wheat harvested reached 97 percent, down 3 points from the previous year, with delays being reported in the Plains. Oats harvested reached 98 percent, down 2 points from the previous year.

Row Crops: In the Northern High Plains, corn and sorghum were in good condition due to the recent rainfall. In the Upper Coast, South Texas and the Lower Valley, corn and sorghum harvest continued. Corn dough reached 60 percent, down one point from the previous year. Sorghum headed reached 75 percent, down one point from the previous year. Cotton continues to progress with aborting bolls due to heat stress in the Upper Coast. Cotton squaring reached 56 percent for the state, down 9 points from the previous year. Sunflowers harvest reached 18 percent, down one point from the previous year. Under heat stress, rice headed reached 73 percent, up 9 points from the previous year. Soybean blooming reached 70 percent, down 5 points from the previous year.

Fruit, Vegetable, and Specialty Crops: In South Texas, citrus and sugarcane were being irrigated. Pecan orchards were producing nuts in South Central Texas.

Livestock, Range and Pasture: Supplemental feeding of livestock occurred in South Texas and South Central Texas. Hay harvest continued in most areas of the state. Cattle prices remained high in most of the livestock districts. Grasshopper infestation continued in the Cross Timbers and North East Texas. Range and pasture condition was rated poor to fair.

Crop Progress

Stage	Percent of Acreage			
	Current Week	Previous Week	Previous Year	5 Year Average
Corn				
Silked	78	75	76	80
Dough	60	57	61	59
Dented	35	15	39	29
Cotton				
Squaring	56	46	65	62
Setting Bolls	22	18	24	20
Peanuts				
Pegging	23	13	26	28
Rice				
Headed	73	63	62	74
Sorghum				
Headed	75	70	76	74
Coloring	55	50	56	56
Mature	29	(NA)	27	24
Soybeans				
Emerged	100	93	100	100
Blooming	70	46	75	70
Setting Pods	27	7	28	29
Sunflowers				
Planted	100	93	100	97
Harvested	18	11	19	20
Winter Wheat				
Harvested	97	93	100	98

(NA) Not available.

Crop Condition

Crop	Percent of Acreage					Index ¹	
	Excellent	Good	Fair	Poor	Very Poor	2023	2022
Corn	12	49	26	11	2	78	51
Cotton	4	22	29	25	20	54	48
Peanuts	4	40	51	5	0	71	63
Rice	10	69	19	2	0	83	69
Sorghum	18	45	27	6	4	76	44
Soybeans	19	34	30	13	4	76	63
Wheat	9	30	29	21	11	60	-3
Oats	2	26	45	8	19	56	26
Range and Pasture	5	19	27	29	20	50	21

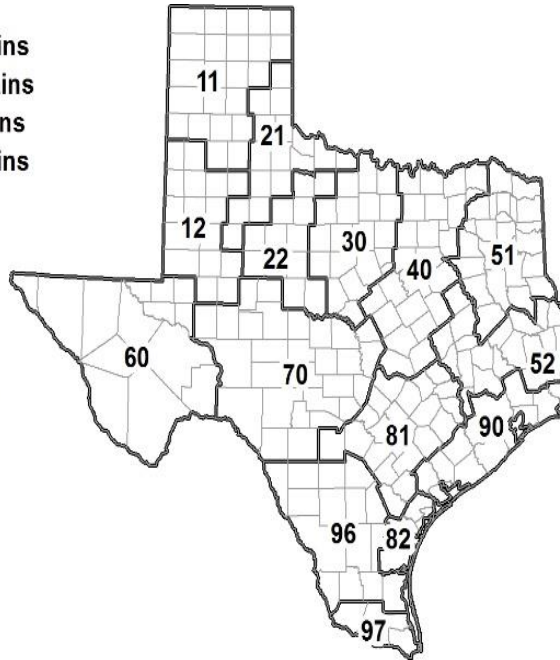
¹ The formula for the condition index is $I = (5V + 25P + 60F + 90G + 110E)/100$ where I = crop condition index and V, P, F, G, E = percentage of crop rated very poor, poor, fair, good, excellent.

Soil Moisture and Days Suitable by District

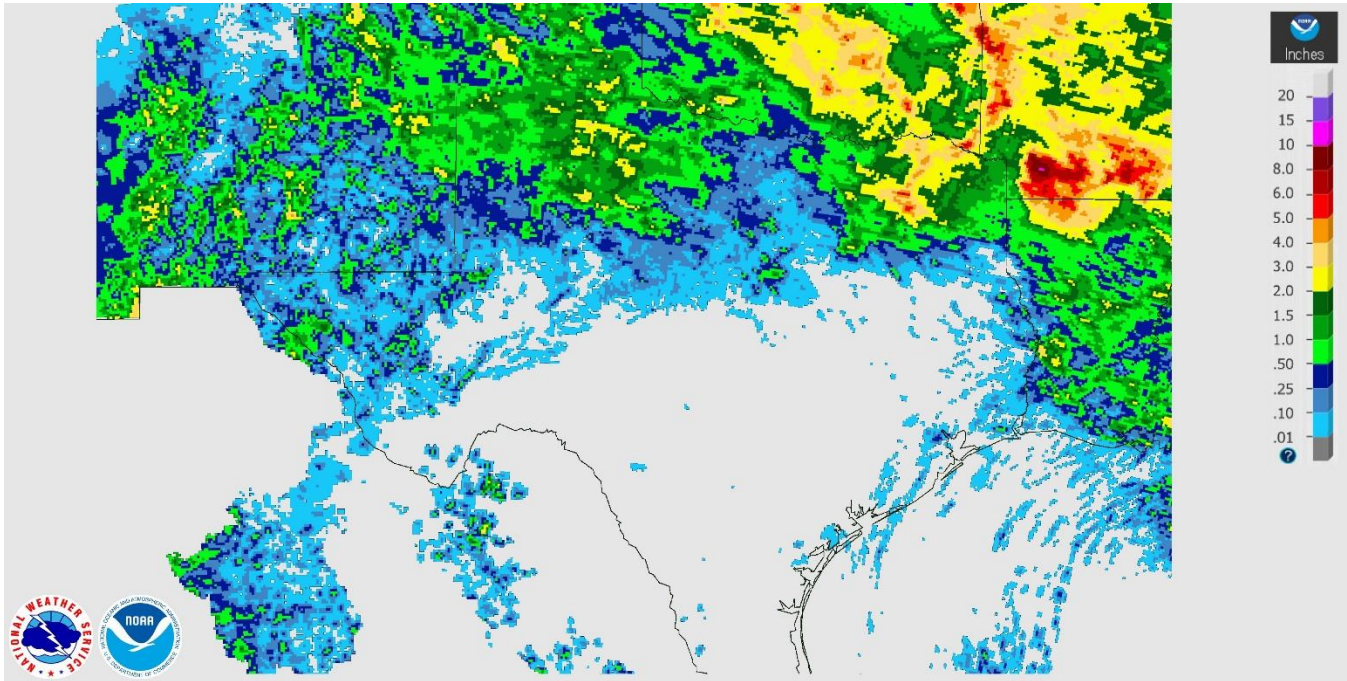
District	Subsoil Moisture Condition by District				Topsoil Moisture Condition by District				Days Suitable for Fieldwork
	Percentage of Acreage				Percentage of Acreage				
	Very Short	Short	Adequate	Surplus	Very Short	Short	Adequate	Surplus	
11	1	9	82	8	0	17	54	29	4.4
12	55	42	3	0	70	29	1	0	6.7
21	26	23	48	3	26	19	52	3	6.8
22	21	38	40	1	40	37	21	2	5.9
30	10	66	24	0	35	52	13	0	6.4
40	28	32	35	5	47	20	26	7	5.8
51	4	29	50	17	4	30	48	18	5.2
52	16	60	24	0	20	59	21	0	7.0
60	29	44	27	0	35	42	23	0	6.7
70	30	44	26	0	52	44	4	0	6.9
81	15	54	31	0	21	57	22	0	6.6
82	75	25	0	0	92	8	0	0	7.0
90	10	49	41	0	24	49	27	0	6.5
96	41	28	27	4	41	34	25	0	6.5
97	15	52	32	1	26	65	9	0	7.0
State	24	34	39	3	35	31	26	8	6.0

Texas Agricultural Districts

- 11 Northern High Plains
- 12 Southern High Plains
- 21 Northern Low Plains
- 22 Southern Low Plains
- 30 Cross Timbers
- 40 Blacklands
- 51 North East
- 52 South East
- 60 Trans-Pecos
- 70 Edwards Plateau
- 81 South Central
- 82 Coastal Bend
- 90 Upper Coast
- 96 South
- 97 Lower Valley

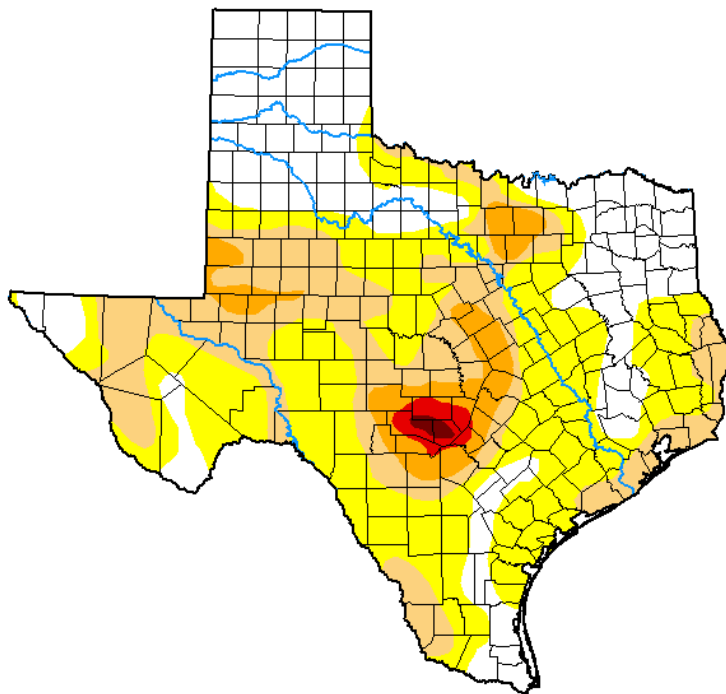


Seven Day Observed Regional Precipitation, July 16, 2023.



Source: National Weather Service, www.nws.noaa.gov

Drought Monitor, Valid July 11, 2023.



Drought Conditions (Percent Area)

	None	D0-D4	D1-D4	D2-D4	D3-D4	D4
Current	30.05	69.95	31.41	7.78	1.37	0.29
Last Week 07-04-2023	27.86	72.14	27.25	6.64	1.37	0.29
3 Months Ago 04-11-2023	22.13	77.87	58.63	37.64	16.24	4.07
Start of Calendar Year 01-03-2023	28.84	71.16	49.90	26.60	7.41	1.60
Start of Water Year 09-27-2022	14.96	85.04	61.36	31.61	8.82	1.06
One Year Ago 07-12-2022	0.76	99.24	93.82	75.70	51.80	21.32

Intensity:

- None
- D0 Abnormally Dry
- D1 Moderate Drought
- D2 Severe Drought
- D3 Extreme Drought
- D4 Exceptional Drought

The Drought Monitor focuses on broad-scale conditions. Local conditions may vary. For more information on the Drought Monitor, go to <https://droughtmonitor.unl.edu/About.aspx>

Author:

Richard Tinker
CPC/NOAA/NWS/NCEP



droughtmonitor.unl.edu

Source: National Drought Mitigation Center, a partnership with USDA, U.S. Department of Commerce/NOAA, <http://droughtmonitor.unl.edu>