



Texas Crop Progress and Condition

Southern Plains Regional Field Office
Post Office Box 70 Austin, Texas 78767
(800) 626-3142 · FAX (855) 270-2725 · www.nass.usda.gov/tx

Issue: TX-CW2622

Weekly Summary for July 11 - July 17

Released: July 18, 2022

Most of the state received from trace amounts to upwards of 3.0 inches of precipitation. Some areas of the Upper Coast and the Coastal Bend received up to 8.0 inches of precipitation. There was an average of 6.6 days suitable for fieldwork.

Small Grains: Wheat harvested is mostly completed in the Northern High Plains.

Row Crops: Irrigated corn was reported in fair condition in the Northern High Plains. Corn harvest had begun in North East Texas and doing well in parts of the Blacklands but are dry in other areas. Corn in the Trans-Pecos have been reported in poor condition due to the lack of moisture. Cotton was reported poor unless it was irrigated in the Northern Low Plains, the Blacklands, and Edwards Plateau. Cotton was showing signs of heat stress in North East Texas due to the lack of moisture. Peanuts were reported in the pegging stage in the South Texas. Rice producers in the Upper Coast had neared closer to harvest. Sorghum plantings in the Southern Low Plains had been stressed by the extreme heat. Sorghum was maturing in the Blacklands but had dried down in the Edwards Plateau. Sorghum harvest continued in parts of South Central Texas.

Fruit, Vegetable and Specialty Crops: Watermelon harvest continued in Southern High Plains and was doing well in North East Texas and South Texas.

Livestock, Range and Pasture: Cattle and livestock across the state were sold due to excessive heat and drought. Ranchers relied on supplemental feed to keep up with the drought conditions. Range and pasture across the majority of the state was reported in poor condition due to drought. However, pasture and hay in the Lower Valley was reported in good condition due to recent precipitation. Grasshoppers and maggots had damaged some Bermuda grass in North East Texas. Range and pasture conditions were rated 84 percent very poor to poor.

Crop Progress

Stage	Percent of Acreage			
	Current Week	Previous Week	Previous Year	5 Year Average
Corn				
Silked	77	73	83	79
Dough	62	52	63	59
Dented	40	32	41	33
Cotton				
Squaring	68	46	60	64
Setting Bolls	25	20	17	20
Peanuts				
Pegging	28	12	30	32
Rice				
Headed	63	55	75	79
Sorghum				
Headed	77	69	82	74
Coloring	57	50	57	57
Mature	32	(NA)	34	29
Soybeans				
Blooming	77	66	74	68
Setting Pods	30	17	32	30
Sunflowers				
Harvested	20	15	19	(NA)

(NA)Not available.

Crop Condition

Crop	Percent of Acreage					Index ¹	
	Excellent	Good	Fair	Poor	Very Poor	2022	2021
Corn	3	22	33	25	17	50	77
Cotton	1	20	40	15	24	48	74
Peanuts	2	25	58	14	1	63	75
Rice	10	33	56	1	0	75	80
Sorghum	2	17	33	23	25	44	79
Soybeans	2	45	24	14	15	61	67
Oats	1	8	13	30	48	26	51
Range and Pasture	0	2	13	32	53	20	75

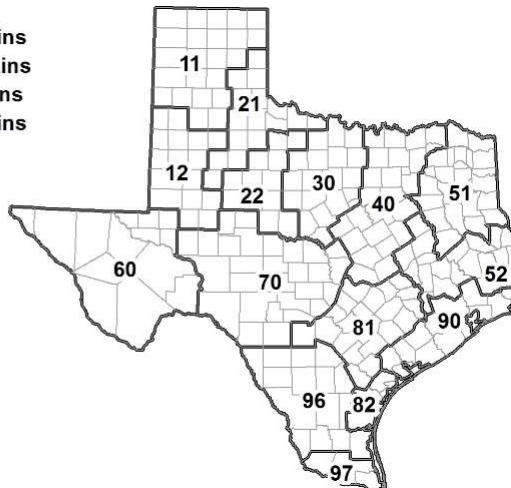
¹ The formula for the condition index is $I = (5V + 25P + 60F + 90G + 110E)/100$ where I = crop condition index and V, P, F, G, E = percentage of crop rated very poor, poor, fair, good, excellent.

Soil Moisture and Days Suitable by District

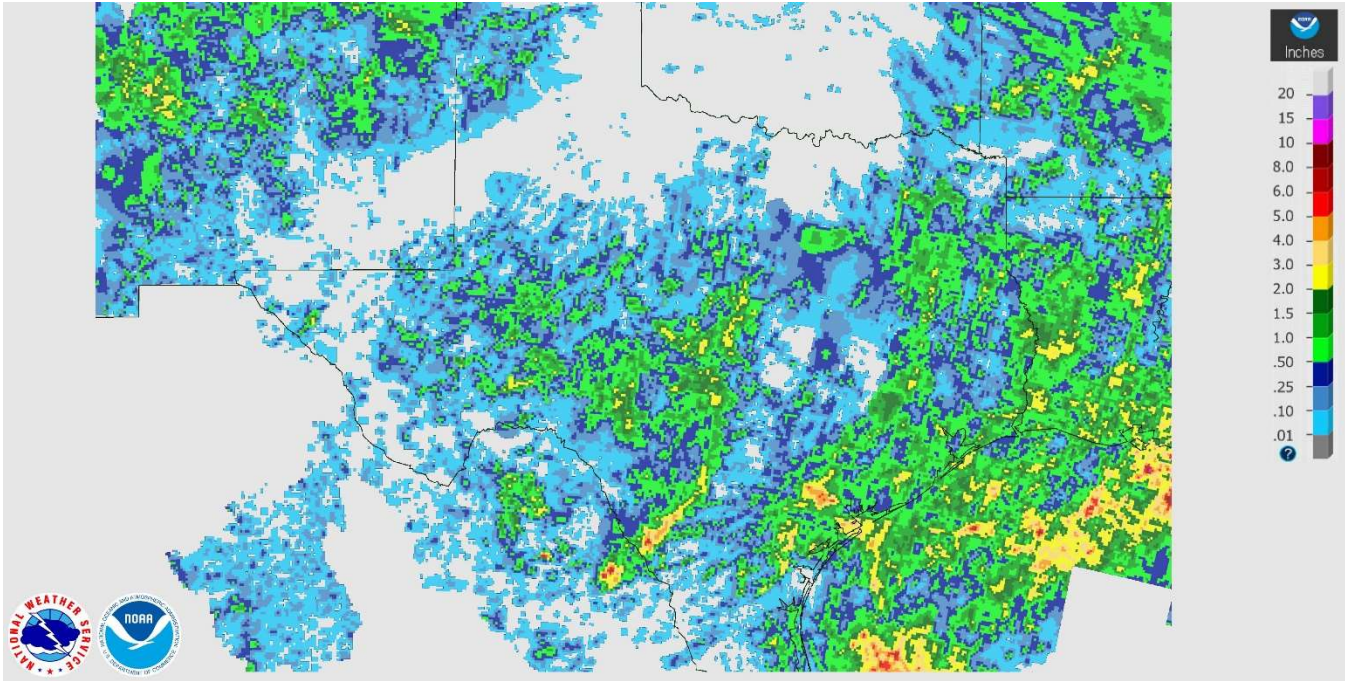
District	Topsoil Moisture Condition by District				Subsoil Moisture Condition by District				Days Suitable for Fieldwork
	Percentage of Acreage				Percentage of Acreage				
	Very Short	Short	Adequate	Surplus	Very Short	Short	Adequate	Surplus	
11	66	25	9	0	69	25	6	0	6.8
12	86	12	2	0	90	6	4	0	7.0
21	36	60	4	0	39	57	4	0	6.3
22	92	7	1	0	79	21	0	0	6.0
30	76	20	4	0	55	39	6	0	5.9
40	81	18	1	0	69	29	2	0	6.7
51	40	45	13	2	40	50	8	2	6.7
52	60	35	5	0	44	51	5	0	7.0
60	39	24	37	0	31	32	37	0	4.9
70	72	16	12	0	72	20	8	0	6.9
81	57	39	4	0	54	42	4	0	6.6
82	55	18	27	0	64	23	13	0	5.6
90	49	51	0	0	42	48	10	0	7.0
96	55	28	17	0	55	24	18	3	6.4
97	61	26	13	0	28	53	19	0	5.4
State	69	25	6	0	65	29	6	0	6.6

Texas Agricultural Districts

- 11 Northern High Plains
- 12 Southern High Plains
- 21 Northern Low Plains
- 22 Southern Low Plains
- 30 Cross Timbers
- 40 Blacklands
- 51 North East
- 52 South East
- 60 Trans-Pecos
- 70 Edwards Plateau
- 81 South Central
- 82 Coastal Bend
- 90 Upper Coast
- 96 South
- 97 Lower Valley

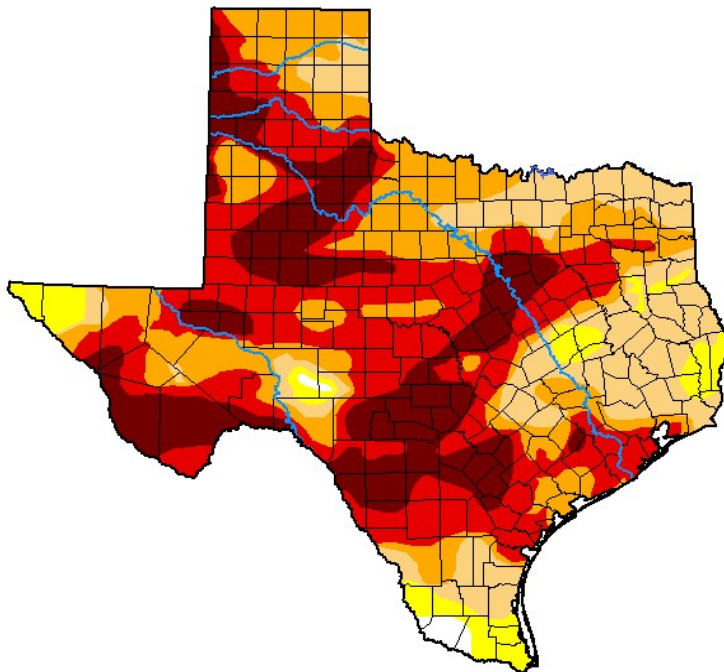


Seven Day Observed Regional Precipitation, July 17, 2022.



Source: National Weather Service, www.nws.noaa.gov

Drought Monitor, Valid July 12, 2022.



Drought Conditions (Percent Area)

	None	D0-D4	D1-D4	D2-D4	D3-D4	D4
Current	0.76	99.24	93.82	75.70	51.80	21.32
Last Week 07-05-2022	2.47	97.53	86.79	66.05	45.91	16.11
3 Months Ago 04-12-2022	2.87	97.13	87.66	74.12	49.11	14.20
Start of Calendar Year 01-04-2022	7.58	92.42	79.83	54.25	16.69	0.00
Start of Water Year 09-28-2021	45.57	54.43	7.26	0.27	0.00	0.00
One Year Ago 07-13-2021	91.38	8.62	5.34	1.16	0.00	0.00

Intensity:

- None
- D0 Abnormally Dry
- D1 Moderate Drought
- D2 Severe Drought
- D3 Extreme Drought
- D4 Exceptional Drought

The Drought Monitor focuses on broad-scale conditions. Local conditions may vary. For more information on the Drought Monitor, go to <https://droughtmonitor.unl.edu/About.aspx>

Author:

Brian Fuchs
National Drought Mitigation Center



droughtmonitor.unl.edu

Source: National Drought Mitigation Center, a partnership with USDA, U.S. Department of Commerce/NOAA, <http://droughtmonitor.unl.edu>