



## Texas Crop Progress and Condition

Southern Plains Regional Field Office  
Post Office Box 70 Austin, Texas 78767  
(800) 626-3142 · FAX (855) 270-2725 · [www.nass.usda.gov/tx](http://www.nass.usda.gov/tx)

**Issue: TX-CW2723**

**Weekly Summary for July 17 - July 23**

**Released: July 24, 2023**

There was little to no rainfall as hot and dry conditions continued in most parts of Texas. Isolated areas in the High Plains, North East Texas and South East Texas received from trace amounts up to 3.00 inches. Drought conditions ranged from none to exceptionally dry with areas in the Edwards Plateau being the driest. There was an average of 6.5 days suitable for fieldwork.

**Small Grains:** Winter wheat was all but harvested with a few straggling fields left.

**Row Crops:** In the Blacklands and the Edwards Plateau, corn and sorghum were being harvested. In the Coastal Bend, corn was dry for harvesting. Corn dented reached 55 percent, up 3 points from the previous year. Sorghum mature reached 37 percent, down 6 points from the previous year. In the Northern Low Plains, heat units had been beneficial but could use a widespread rain. Cotton crop conditions were deteriorating due to moisture stress in the Lower Valley. Cotton harvest had begun in the Coastal Bend. Cotton squaring reached 70 percent for the state, down 4 points from the previous year. Sunflowers harvest reached 25 percent, down 2 points from the previous year. Rice headed reached 80 percent, down 13 points from the previous year. Soybean setting pods reached 43 percent, the same as the previous year.

**Fruit, Vegetable, and Specialty Crops:** In South Texas, irrigated melon and cantaloupes were in good condition. Pecan trees were under drought stress in the Cross Timbers. Sesame crops started to mature in the Lower Valley.

**Livestock, Range and Pasture:** Supplemental feeding of livestock occurred in the Southern High Plains, South Texas, South Central Texas, the Blacklands and the Lower Valley. Cattle prices remained high in most of the livestock districts. Grasshopper infestation continued in the Southern Low Plains, South East Texas and the Cross Timbers. Range and pasture condition was rated fair to poor under heat and drought stress.

### Crop Progress

Stage	Percent of Acreage			
	Current Week	Previous Week	Previous Year	5 Year Average
<b>Corn</b>				
Silked	85	78	85	86
Dough	68	60	67	65
Dented	55	35	52	46
<b>Cotton</b>				
Squaring	70	56	74	74
Setting Bolls	30	22	42	31
<b>Peanuts</b>				
Pegging	45	23	38	41
<b>Rice</b>				
Headed	80	73	67	81
<b>Sorghum</b>				
Headed	80	75	83	80
Coloring	62	55	62	63
Mature	37	29	43	39
<b>Soybeans</b>				
Blooming	72	70	79	74
Setting Pods	43	27	43	41
<b>Sunflowers</b>				
Harvested	25	18	23	27

### Crop Condition

Crop	Percent of Acreage					Index <sup>1</sup>	
	Excellent	Good	Fair	Poor	Very Poor	2023	2022
Corn	19	51	25	4	1	83	51
Cotton	3	21	36	26	14	51	47
Peanuts	1	44	50	3	2	72	64
Rice	13	72	13	2	0	87	74
Sorghum	24	40	22	8	6	78	51
Soybeans	25	36	24	15	0	78	60
Range and Pasture	4	19	29	24	24	47	18

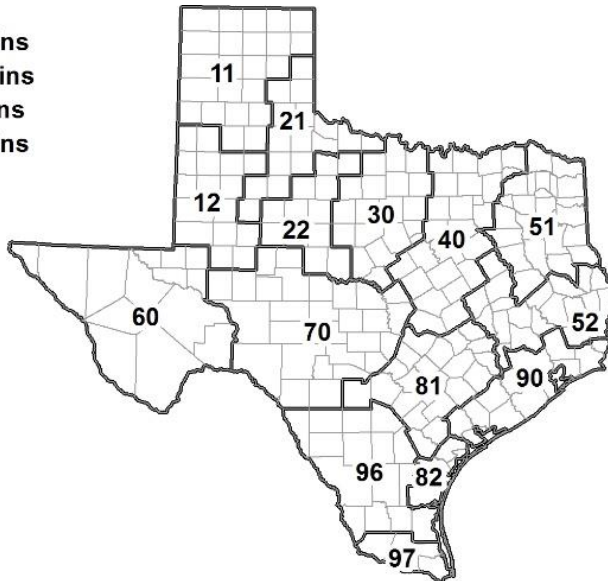
<sup>1</sup> The formula for the condition index is  $I = (5V + 25P + 60F + 90G + 110E)/100$  where I = crop condition index and V, P, F, G, E = percentage of crop rated very poor, poor, fair, good, excellent.

### Soil Moisture and Days Suitable by District

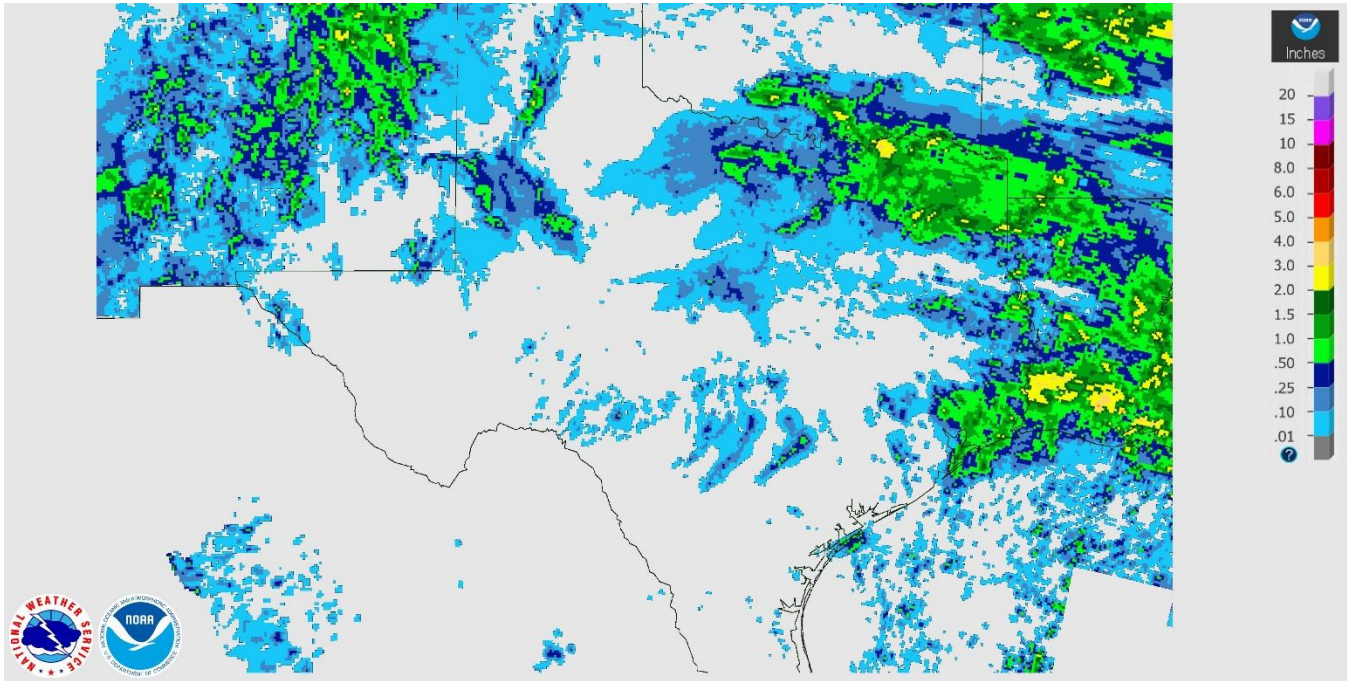
District	Subsoil Moisture Condition by District				Topsoil Moisture Condition by District				Days Suitable for Fieldwork
	Percentage of Acreage				Percentage of Acreage				
	Very Short	Short	Adequate	Surplus	Very Short	Short	Adequate	Surplus	
11	1	12	80	7	0	13	72	15	5.7
12	53	47	0	0	53	47	0	0	7.0
21	19	30	50	1	19	30	51	0	6.6
22	28	42	30	0	45	39	16	0	6.3
30	21	59	20	0	42	47	11	0	6.4
40	43	18	37	2	53	15	31	1	6.5
51	13	18	60	9	13	23	57	7	6.8
52	19	55	18	8	22	50	25	3	7.0
60	24	16	56	4	28	18	50	4	6.6
70	27	49	24	0	52	47	1	0	7.0
81	29	55	16	0	30	61	9	0	6.7
82	66	19	15	0	72	19	9	0	7.0
90	30	61	9	0	48	46	6	0	6.5
96	46	34	17	3	51	30	19	0	5.9
97	16	59	24	1	33	61	6	0	7.0
State	28	35	35	2	34	33	29	4	6.5

Texas Agricultural Districts

- 11 Northern High Plains
- 12 Southern High Plains
- 21 Northern Low Plains
- 22 Southern Low Plains
- 30 Cross Timbers
- 40 Blacklands
- 51 North East
- 52 South East
- 60 Trans-Pecos
- 70 Edwards Plateau
- 81 South Central
- 82 Coastal Bend
- 90 Upper Coast
- 96 South
- 97 Lower Valley

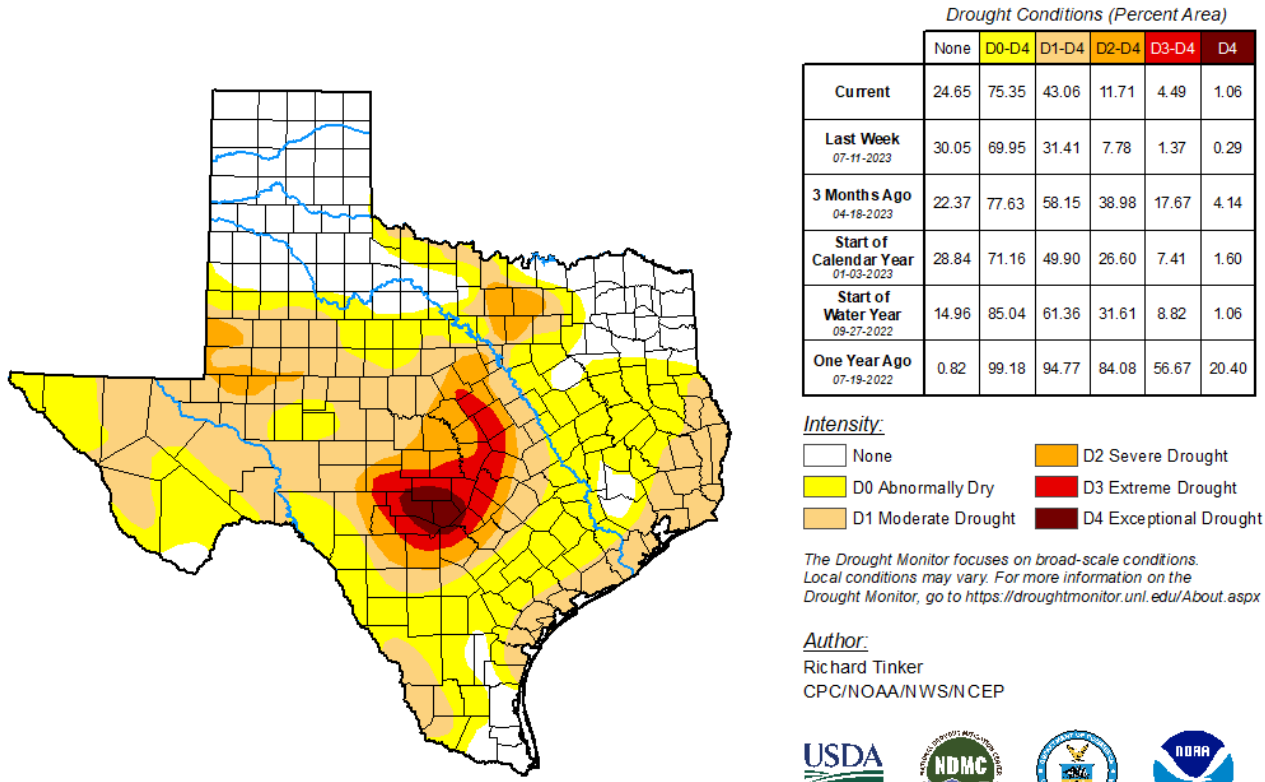


Seven Day Observed Regional Precipitation, July 23, 2023.



Source: National Weather Service, [www.nws.noaa.gov](http://www.nws.noaa.gov)

Drought Monitor, Valid July 18, 2023.



Drought Conditions (Percent Area)

	None	D0-D4	D1-D4	D2-D4	D3-D4	D4
<b>Current</b>	24.65	75.35	43.06	11.71	4.49	1.06
<b>Last Week</b> 07-11-2023	30.05	69.95	31.41	7.78	1.37	0.29
<b>3 Months Ago</b> 04-18-2023	22.37	77.63	58.15	38.98	17.67	4.14
<b>Start of Calendar Year</b> 01-03-2023	28.84	71.16	49.90	26.60	7.41	1.60
<b>Start of Water Year</b> 09-27-2022	14.96	85.04	61.36	31.61	8.82	1.06
<b>One Year Ago</b> 07-19-2022	0.82	99.18	94.77	84.08	56.67	20.40

Intensity:

- None
- D0 Abnormally Dry
- D1 Moderate Drought
- D2 Severe Drought
- D3 Extreme Drought
- D4 Exceptional Drought

The Drought Monitor focuses on broad-scale conditions. Local conditions may vary. For more information on the Drought Monitor, go to <https://droughtmonitor.unl.edu/About.aspx>

Author:

Richard Tinker  
CPC/NOAA/NWS/NCEP



[droughtmonitor.unl.edu](http://droughtmonitor.unl.edu)

Source: National Drought Mitigation Center, a partnership with USDA, U.S. Department of Commerce/NOAA, <http://droughtmonitor.unl.edu>