



Texas Crop Progress and Condition

Southern Plains Regional Field Office
Post Office Box 70 Austin, Texas 78767
(800) 626-3142 · FAX (855) 270-2725 · www.nass.usda.gov/tx

Issue: TX-CW2823

Weekly Summary for July 24 - July 30

Released: July 31, 2023

There was little to no rainfall as hot and dry conditions continued in most parts of Texas. Isolated areas in North East Texas and South East Texas received up to 3.00 inches. Drought conditions ranged from none to exceptional drought with areas in Edwards Plateau being the driest. There was an average of 6.8 days suitable for fieldwork.

Small Grains: Winter wheat has almost finished harvesting throughout Texas with some harvesting still being completed in the Northern High Plains.

Row Crops: Corn harvest has started in certain districts across Texas. In the Northern High Plains, corn and sorghum are stressed due to hot, dry, and windy weather. Corn dented reached 60 percent, up 3 points from the previous year. Sorghum mature reached 45 percent, down 3 points from the previous year. Heat and drought continue to decline cotton conditions in the Blacklands and the Lower Valley. Cotton setting boils reached 35 percent for the state, down 15 points from the previous year. Sunflowers harvest reached 37 percent, up 9 from the previous year. Rice headed reached 88 percent same as the previous year. Rice harvest has started in most districts across Texas. Soybean setting pods reached 53 percent, down 3 points from the previous year. In South Texas, peanuts continue to develop pods and progress under irrigation.

Fruit, Vegetable, and Specialty Crops: In the Northern High Plains, fruit is starting to set. In the Southern High Plains, melon yields increase with each picking. In the Lower Valley, vegetable farmers are preparing their fields to plant cool season vegetable crops.

Livestock, Range and Pasture: In most districts, livestock producers continue supplement feeding of livestock due to dry conditions. Fleahoppers have been a slight problem in the Northern High Plains and grasshoppers have been a hazard in the Northern Low Plains. Range and pasture condition was rated very poor to poor.

Crop Progress

Stage	Percent of Acreage			
	Current Week	Previous Week	Previous Year	5 Year Average
Corn				
Silked	89	85	89	91
Dough	73	68	69	71
Dented	62	55	59	57
Mature	34	(NA)	34	29
Cotton				
Squaring	80	70	84	84
Setting Bolls	35	30	50	41
Peanuts				
Pegging	60	45	55	55
Rice				
Headed	88	80	88	90
Harvested	9	(NA)	10	9
Sorghum				
Headed	85	80	86	83
Coloring	67	62	66	68
Mature	45	37	48	51
Soybeans				
Blooming	80	72	82	81
Setting Pods	53	43	56	54
Sunflowers				
Harvested	37	25	28	33

(NA) Not available.

Crop Condition

Crop	Percent of Acreage					Index ¹	
	Excellent	Good	Fair	Poor	Very Poor	2023	2022
Corn	11	50	29	7	3	76	45
Cotton	3	14	33	28	22	44	51
Peanuts	3	40	48	8	1	70	65
Rice	10	69	16	5	0	84	71
Sorghum	15	33	27	11	14	66	43
Soybeans	24	33	23	20	0	75	59
Range and Pasture	2	14	26	28	30	39	15

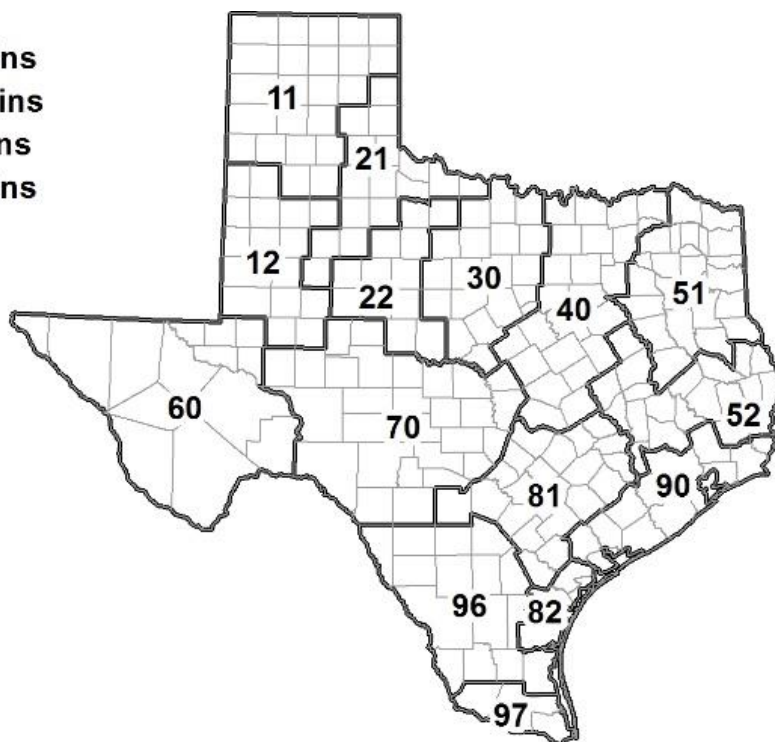
¹ The formula for the condition index is $I = (5V + 25P + 60F + 90G + 110E)/100$ where I = crop condition index and V, P, F, G, E = percentage of crop rated very poor, poor, fair, good, excellent.

Soil Moisture and Days Suitable by District

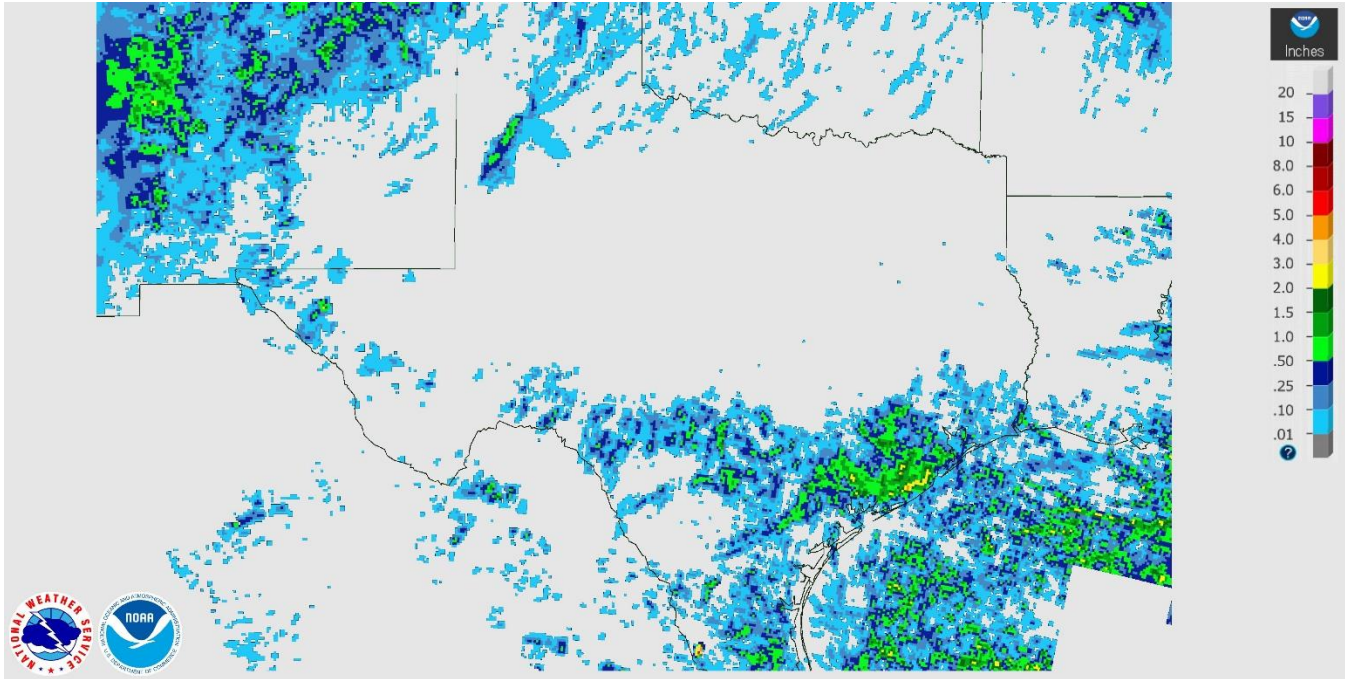
District	Subsoil Moisture Condition by District				Topsoil Moisture Condition by District				Days Suitable for Fieldwork
	Percentage of Acreage				Percentage of Acreage				
	Very Short	Short	Adequate	Surplus	Very Short	Short	Adequate	Surplus	
11	9	28	63	0	11	46	43	0	6.9
12	95	4	1	0	97	3	0	0	6.8
21	19	40	41	0	24	41	35	0	6.5
22	18	54	28	0	37	50	13	0	6.6
30	38	59	3	0	58	40	2	0	6.4
40	42	36	20	2	48	37	15	0	7.0
51	15	40	42	3	20	39	39	2	7.0
52	31	51	14	4	36	45	15	4	7.0
60	94	5	1	0	95	4	1	0	5.9
70	50	49	1	0	83	16	1	0	7.0
81	32	56	12	0	34	56	10	0	6.5
82	100	0	0	0	100	0	0	0	7.0
90	28	62	10	0	48	44	8	0	6.8
96	52	37	11	0	53	43	4	0	6.6
97	16	61	23	0	40	56	4	0	7.0
State	41	34	25	0	49	34	17	0	6.8

Texas Agricultural Districts

- 11 Northern High Plains
- 12 Southern High Plains
- 21 Northern Low Plains
- 22 Southern Low Plains
- 30 Cross Timbers
- 40 Blacklands
- 51 North East
- 52 South East
- 60 Trans-Pecos
- 70 Edwards Plateau
- 81 South Central
- 82 Coastal Bend
- 90 Upper Coast
- 96 South
- 97 Lower Valley

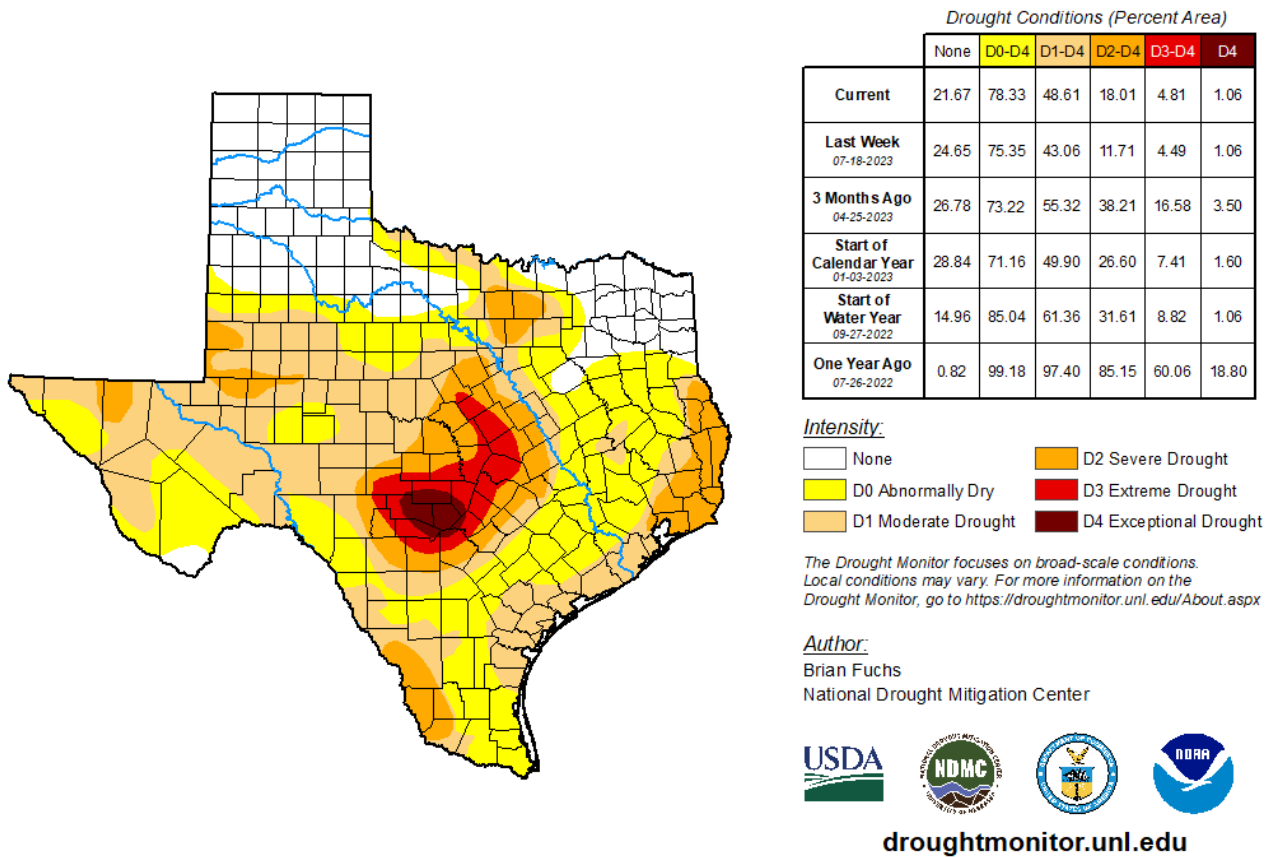


Seven Day Observed Regional Precipitation, July 30, 2023.



Source: National Weather Service, www.nws.noaa.gov

Drought Monitor, Valid July 25, 2023.



Source: National Drought Mitigation Center, a partnership with USDA, U.S. Department of Commerce/NOAA, <http://droughtmonitor.unl.edu>