



Texas Crop Progress and Condition

Southern Plains Regional Field Office
Post Office Box 70 Austin, Texas 78767
(800) 626-3142 · FAX (855) 270-2725 · www.nass.usda.gov/tx

Issue: TX-CW3423

Weekly Summary for September 4 - September 10

Released: Sept 11, 2023

Hot and dry weather persisted, throughout Texas, while rainfall ranged from none to 1.5 inches. The southeastern part of Texas received almost no rain while some of the northeastern part of Texas received up to 1.5 inches of rain. Drought conditions ranged from none to exceptional drought with areas in the Edwards Plateau and South East Texas being the driest. There was an average of 6.7 days suitable for fieldwork.

Row Crops:

Corn harvest continued across the state with 62 percent harvested. Corn mature reached 73 percent, down 7 points from the previous year. Late planted sorghum struggled with drought stress. Sorghum mature reached 81 percent, down 6 points from the previous year. Cotton continued to struggle due to the extreme heat. Cotton bolls opening reached 41 percent for the state, down 8 points from the previous year. Sunflowers harvest reached 59 percent, down 5 points from the previous year. In the Upper Coast, rice harvest continued after the small delay due to later than normal planting. Rice harvested reached 87 percent, up 2 points from the previous year. In the Blacklands, the lack of rainfall forced producers to roll up straw and stubble for hay. Soybean setting pods reached 93 percent, down 6 points from the previous year, with 63 percent dropping leaves. In South Texas, Peanuts remained under irrigation and in good condition. Peanuts mature reached 20 percent, unchanged from the previous year.

Fruit, Vegetable, and Specialty Crops:

In the Lower Valley, Citrus and sugarcane were irrigated. Despite the extreme heat, Pecans appeared to be doing okay.

Livestock, Range and Pasture:

Range and pasture condition was rated very poor to poor. Grasses have gone dormant due to excessive heat and lack of moisture. Hay resources were being fed to livestock and producers sought hay to purchase. There were concerns reported of a hay shortage in the winter months.

Crop Progress

| Stage | Percent of Acreage | | | |
|---------------------|--------------------|---------------|---------------|----------------|
| | Current Week | Previous Week | Previous Year | 5 Year Average |
| Corn | | | | |
| Dented | 93 | 86 | 93 | 94 |
| Mature | 73 | 69 | 80 | 73 |
| Harvested | 62 | 56 | 63 | 61 |
| Cotton | | | | |
| Setting Bolls | 98 | 92 | 99 | 98 |
| Bolls Opening | 41 | 33 | 49 | 39 |
| Harvested | 19 | 16 | 16 | 14 |
| Peanuts | | | | |
| Mature | 20 | 12 | 20 | 18 |
| Rice | | | | |
| Harvested | 87 | 80 | 85 | 88 |
| Sorghum | | | | |
| Coloring | 93 | 89 | 98 | 93 |
| Mature | 81 | 77 | 87 | 81 |
| Harvested | 71 | 67 | 73 | 72 |
| Soybeans | | | | |
| Setting Pods | 93 | 89 | 99 | 93 |
| Dropping Leaves | 63 | 52 | 77 | 64 |
| Sunflowers | | | | |
| Harvested | 59 | 55 | 64 | 59 |
| Winter Wheat | | | | |
| Planted | 7 | (NA) | 15 | 7 |

(NA) Not available.

Crop Condition

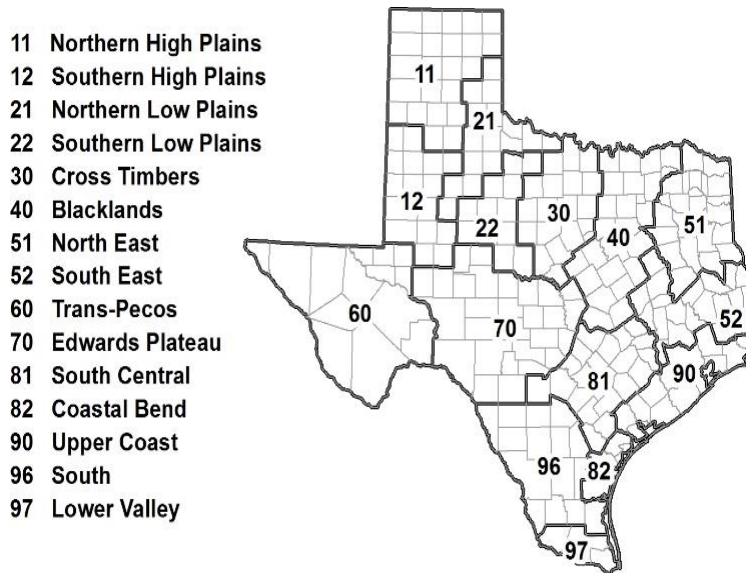
| Crop | Percent of Acreage | | | | | Index ¹ | |
|-------------------|--------------------|------|------|------|-----------|--------------------|------|
| | Excellent | Good | Fair | Poor | Very Poor | 2023 | 2022 |
| Corn | 12 | 37 | 27 | 15 | 9 | 67 | 42 |
| Cotton | 1 | 8 | 30 | 33 | 28 | 36 | 42 |
| Peanuts | 2 | 29 | 35 | 22 | 12 | 55 | 65 |
| Rice | 8 | 55 | 35 | 2 | 0 | 80 | 79 |
| Sorghum | 16 | 29 | 22 | 17 | 16 | 62 | 48 |
| Soybeans | 8 | 26 | 34 | 28 | 4 | 60 | 44 |
| Range and Pasture | 1 | 5 | 22 | 27 | 45 | 28 | 48 |

¹ The formula for the condition index is $I = (5V + 25P + 60F + 90G + 110E)/100$ where I = crop condition index and V, P, F, G, E = percentage of crop rated very poor, poor, fair, good, excellent.

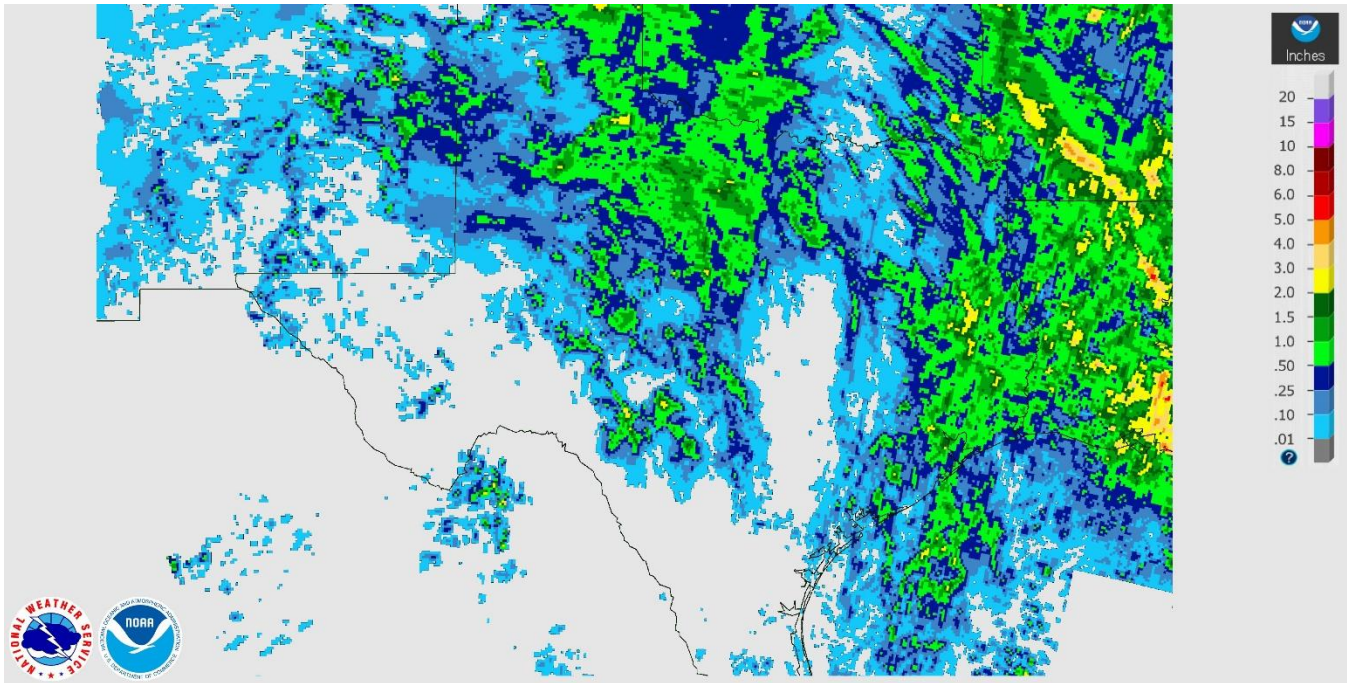
4 Soil Moisture and Days Suitable by District

| District | Subsoil Moisture Condition by District | | | | Topsoil Moisture Condition by District | | | | Days Suitable for Fieldwork |
|----------|--|-------|----------|---------|--|-------|----------|---------|-----------------------------|
| | Percentage of Acreage | | | | Percentage of Acreage | | | | |
| | Very Short | Short | Adequate | Surplus | Very Short | Short | Adequate | Surplus | |
| 11 | 25 | 32 | 43 | 0 | 41 | 29 | 30 | 0 | 6.9 |
| 12 | 68 | 27 | 5 | 0 | 61 | 33 | 6 | 0 | 6.8 |
| 21 | 62 | 33 | 5 | 0 | 62 | 35 | 3 | 0 | 7.0 |
| 22 | 46 | 54 | 0 | 0 | 51 | 48 | 1 | 0 | 6.5 |
| 30 | 67 | 33 | 0 | 0 | 75 | 25 | 0 | 0 | 6.7 |
| 40 | 67 | 27 | 6 | 0 | 75 | 22 | 3 | 0 | 6.1 |
| 51 | 53 | 38 | 6 | 3 | 55 | 37 | 5 | 3 | 6.9 |
| 52 | 78 | 21 | 1 | 0 | 77 | 22 | 1 | 0 | 6.8 |
| 60 | 17 | 32 | 40 | 11 | 17 | 32 | 40 | 11 | 6.6 |
| 70 | 92 | 8 | 0 | 0 | 92 | 7 | 1 | 0 | 6.4 |
| 81 | 77 | 20 | 3 | 0 | 83 | 14 | 3 | 0 | 6.8 |
| 82 | 21 | 30 | 49 | 0 | 10 | 34 | 56 | 0 | 7.0 |
| 90 | 84 | 15 | 1 | 0 | 90 | 9 | 1 | 0 | 6.4 |
| 96 | 34 | 35 | 30 | 1 | 35 | 38 | 26 | 1 | 6.6 |
| 97 | 23 | 76 | 1 | 0 | 80 | 19 | 1 | 0 | 7.0 |
| State | 55 | 31 | 14 | 0 | 61 | 28 | 11 | 0 | 6.7 |

Texas Agricultural Districts

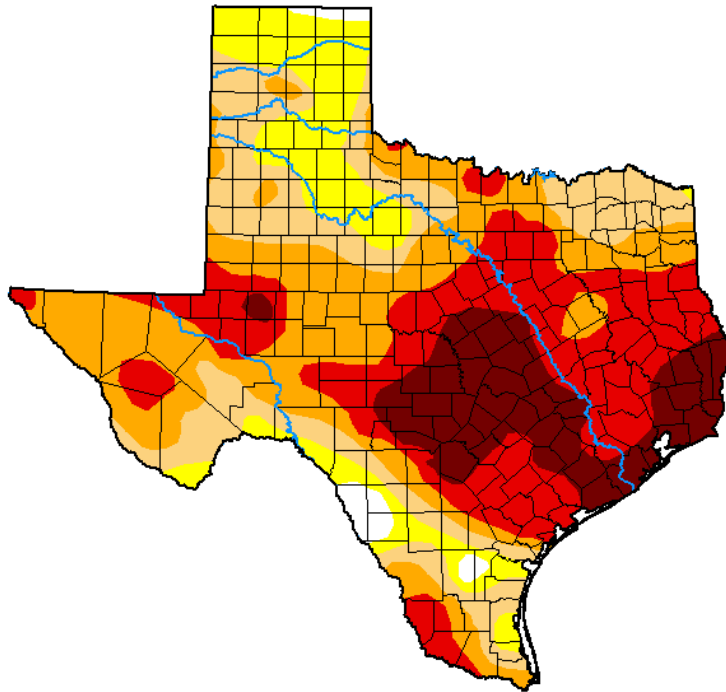


Seven Day Observed Regional Precipitation, September 10, 2023.



Source: National Weather Service, www.nws.noaa.gov

Drought Monitor, September 11, 2023.



Drought Conditions (Percent Area)

| | None | D0-D4 | D1-D4 | D2-D4 | D3-D4 | D4 |
|---|-------|-------|-------|-------|-------|-------|
| Current | 1.61 | 98.39 | 85.68 | 66.45 | 40.53 | 14.76 |
| Last Week 08-29-2023 | 1.55 | 98.45 | 75.83 | 61.41 | 32.33 | 12.64 |
| 3 Months Ago 06-06-2023 | 41.15 | 58.85 | 27.63 | 10.45 | 1.79 | 0.29 |
| Start of Calendar Year 01-03-2023 | 28.84 | 71.16 | 49.90 | 26.60 | 7.41 | 1.60 |
| Start of Water Year 09-27-2022 | 14.96 | 85.04 | 61.36 | 31.61 | 8.82 | 1.06 |
| One Year Ago 09-06-2022 | 20.57 | 79.43 | 62.32 | 33.57 | 9.26 | 0.90 |

Intensity:

- None
- D0 Abnormally Dry
- D1 Moderate Drought
- D2 Severe Drought
- D3 Extreme Drought
- D4 Exceptional Drought

The Drought Monitor focuses on broad-scale conditions. Local conditions may vary. For more information on the Drought Monitor, go to <https://droughtmonitor.unl.edu/About.aspx>

Author:

Richard Tinker
CPC/NOAA/NWS/NCEP



droughtmonitor.unl.edu

Source: National Drought Mitigation Center, a partnership with USDA, U.S. Department of Commerce/NOAA, <http://droughtmonitor.unl.edu>