



# Texas Crop Progress and Condition

Southern Plains Regional Field Office  
Post Office Box 70 Austin, Texas 78767  
(800) 626-3142 · FAX (855) 270-2725 · www.nass.usda.gov/tx

Issue: TX-CW3422

Weekly Summary for September 5 - September 11

Released: September 12, 2022

Much of the state received from trace amounts to 2.00 inches of precipitation. Isolated areas in the Coastal Bend and South Texas received significantly higher amounts. Drought conditions ranged from none to exceptionally dry, with South Central Texas being the driest. There was an average of 6.1 days suitable for fieldwork, down from 4.6 days last week.

Small grain: On the Plains, producers have benefited greatly from the recent rain and continue to plant winter wheat for fall grazing. In other areas of the state, farmers are working ground in preparation to plant wheat.

Row Crops: Cotton boll development continues in the Northern High Plains while most cotton has been harvested or shredded in the Coastal Bend. Reporters indicated that the corn crop was coming along, with many producers finishing up watering and preparing for the harvest.

Livestock, Range and Pasture: Supplemental feeding continued across the state. Overall, pastures continued to green from rain received in previous weeks, though more is desired. Range and pasture conditions were rated 55 percent fair to poor.

## Crop Progress

Stage	Percent of Acreage			
	Current Week	Previous Week	Previous Year	5 Year Average
<b>Corn</b>				
Dented	94	88	92	93
Mature	81	75	74	71
Harvested	64	59	62	61
<b>Cotton</b>				
Bolls Opening	50	41	32	35
Harvested	17	11	9	14
<b>Peanuts</b>				
Mature	22	11	15	16
<b>Rice</b>				
Harvested	86	81	88	90
<b>Sorghum</b>				
Mature	88	80	80	79
Harvested	74	68	69	70
<b>Soybeans</b>				
Dropping Leaves	78	69	67	63
<b>Sunflowers</b>				
Harvested	65	56	59	56
<b>Winter Wheat</b>				
Planted	17	3	8	6

(NA)Not available.

### Crop Condition

Crop	Percent of Acreage					Index <sup>1</sup>	
	Excellent	Good	Fair	Poor	Very Poor	2022	2021
Corn	3	14	31	23	29	42	78
Cotton	1	14	32	32	21	42	78
Peanuts	0	36	47	17	0	65	75
Rice	22	29	48	1	0	79	85
Sorghum	1	16	41	29	13	48	79
Soybeans	1	12	35	42	10	44	75
Range and Pasture	6	18	31	24	21	48	60

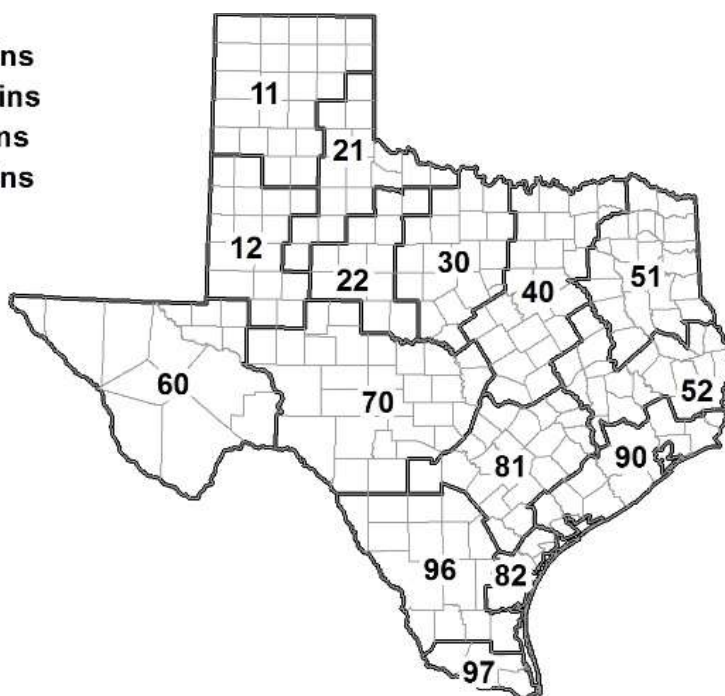
<sup>1</sup> The formula for the condition index is  $I = (5V + 25P + 60F + 90G + 110E)/100$  where I = crop condition index and V, P, F, G, E = percentage of crop rated very poor, poor, fair, good, excellent.

### Soil Moisture and Days Suitable by District

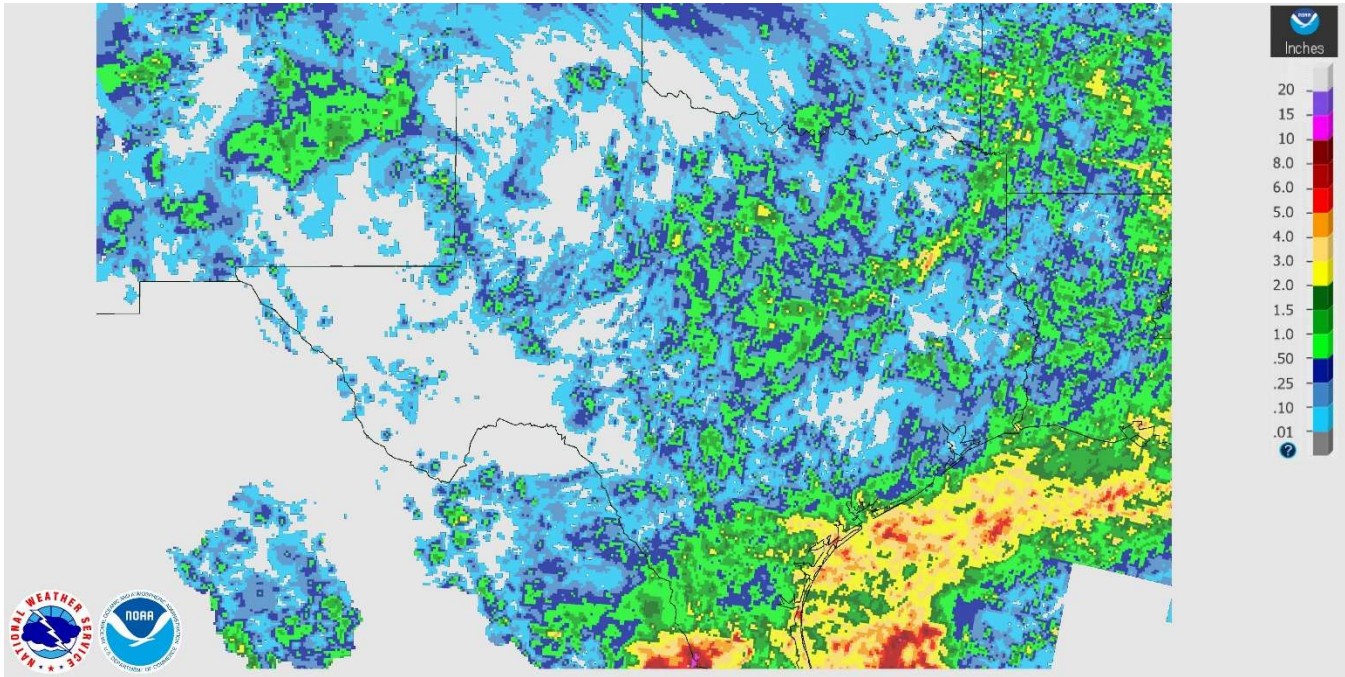
District	Subsoil Moisture Condition by District				Topsoil Moisture Condition by District				Days Suitable for Fieldwork
	Percentage of Acreage				Percentage of Acreage				
	Very Short	Short	Adequate	Surplus	Very Short	Short	Adequate	Surplus	
11	24	42	33	1	6	36	56	2	6.5
12	84	13	3	0	69	16	15	0	7.0
21	25	47	27	1	17	48	34	1	6.2
22	50	44	6	0	19	53	28	0	5.9
30	24	52	24	0	24	32	41	3	6.2
40	14	45	41	0	3	36	60	1	5.6
51	11	35	50	4	3	27	67	3	6.8
52	6	23	71	0	8	22	66	4	6.4
60	5	32	52	11	5	35	49	11	6.3
70	30	21	48	1	9	34	53	4	6.1
81	18	58	20	4	19	49	30	2	6.5
82	0	0	91	9	0	5	86	9	2.3
90	2	61	31	6	3	46	45	6	5.4
96	14	31	55	0	2	37	61	0	4.3
97	3	13	75	9	2	48	47	3	4.3
State	32	36	30	2	20	34	44	2	6.1

### Texas Agricultural Districts

- 11 Northern High Plains
- 12 Southern High Plains
- 21 Northern Low Plains
- 22 Southern Low Plains
- 30 Cross Timbers
- 40 Blacklands
- 51 North East
- 52 South East
- 60 Trans-Pecos
- 70 Edwards Plateau
- 81 South Central
- 82 Coastal Bend
- 90 Upper Coast
- 96 South
- 97 Lower Valley

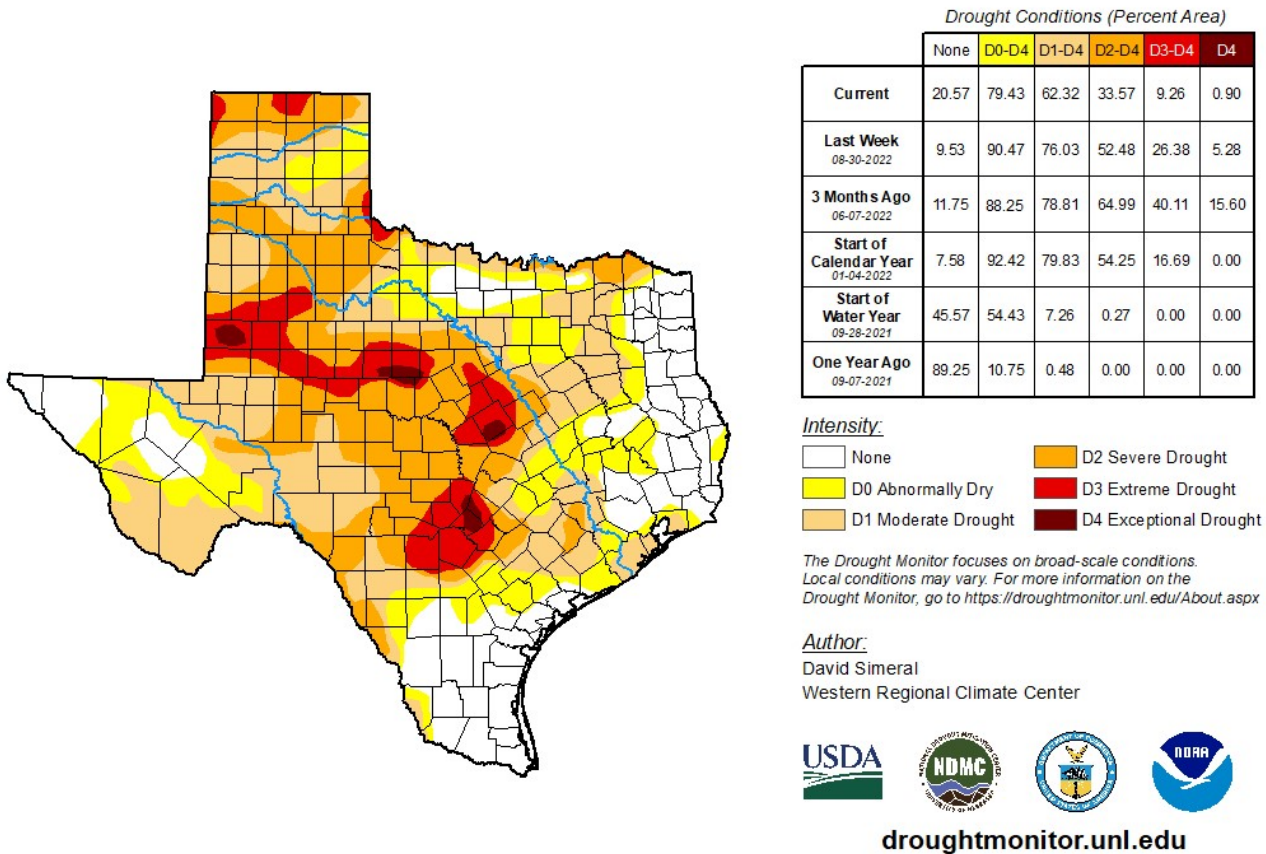


Seven Day Observed Regional Precipitation, September 05, 2022.



Source: National Weather Service, [www.nws.noaa.gov](http://www.nws.noaa.gov)

Drought Monitor, Valid August 30, 2022.



Source: National Drought Mitigation Center, a partnership with USDA, U.S. Department of Commerce/NOAA, <http://droughtmonitor.unl.edu>