



Texas Crop Progress and Condition

Southern Plains Regional Field Office
Post Office Box 70 Austin, Texas 78767
(800) 626-3142 · FAX (855) 270-2725 · www.nass.usda.gov/tx

Issue: TX-CW3523

Weekly Summary for September 11 - September 17

Released: September 18, 2023

Heavy rains occurred throughout Texas and brought cooler temperatures. Rainfall ranged from 0.01 of an inch to 6 inches with the Southern High Plains, the Northern Low Plains, and the Upper Coast receiving the most rain. Drought conditions ranged from none to exceptional drought with areas in South Central, the Blacklands, the Upper Coast and South East Texas being the driest. There was an average of 4.9 days suitable for fieldwork.

Row Crops:

Late sorghum and corn will benefit from the heavy rainfalls. Corn harvest continued across the state with 68 percent harvested. Corn mature reached 82 percent, down 2 points from the previous year. Sorghum harvest reached 75 percent, down 2 points from the previous year. Recent rains did not benefit the cotton crop and in the Edwards Plateau, hail took out some cotton fields. Cotton bolls opening reached 52 percent for the state, down 2 points from the previous year. Sunflowers harvest reached 63 percent, down 6 points from the previous year. Rice harvested reached 91 percent, down 1 point from the previous year with residue being baled up for hay. In the Blacklands, soybeans were harvested or rolled up for hay due to lack of pod fill. Soybean dropping leaves reached 76 percent, down 6 points from the previous year. In South Texas, peanuts remained under irrigation and digging is expected to start next week. Peanuts mature reached 25 percent, down 3 points from the previous year.

Fruit, Vegetable, and Specialty Crops:

In the Northern High Plains, moisture was beneficial to helping fruits reach an adequate stage of maturity. In South Texas, some planters began growing strawberries. Most of the vegetable crops were finished for the season. In the Lower Valley, citrus and sugarcane crops continued to be irrigated. Pecan trees continued to shed nuts due to dry conditions.

Livestock, Range and Pasture:

Range and pasture conditions improved with recent rains. Range and pasture condition was rated very poor to poor. Livestock producers continued to supplement stock with hay, although hay supplies have started to run low. Producers in some districts continued to thin their herds. Pond water levels have started to increase. In the South Central District, precipitation was not enough to relieve drought conditions, but the reduced temperatures brought relief to heat stressed livestock.

Crop Progress

Stage	Percent of Acreage			
	Current Week	Previous Week	Previous Year	5 Year Average
Corn				
Dented	97	93	97	97
Mature	82	73	84	80
Harvested	68	62	67	66
Cotton				
Bolls Opening	52	41	54	46
Harvested	20	19	20	18
Peanuts				
Mature	25	20	28	22
Rice				
Harvested	90	87	91	93
Sorghum				
Coloring	96	93	100	96
Mature	85	81	92	85
Harvested	75	71	77	76
Soybeans				
Setting Pods	96	93	100	97
Dropping Leaves	76	63	82	73
Harvested	26	13	21	42
Sunflowers				
Harvested	63	59	69	63
Winter Wheat				
Planted	15	7	31	17

Crop Condition

Crop	Percent of Acreage					Index ¹	
	Excellent	Good	Fair	Poor	Very Poor	2023	2022
Corn	12	37	27	15	9	67	42
Cotton	1	9	25	33	32	34	40
Peanuts	0	36	27	19	18	54	64
Rice	8	55	35	2	0	80	79
Sorghum	16	29	22	17	16	62	48
Soybeans	9	26	33	27	5	60	41
Range and Pasture	1	6	22	24	47	28	50

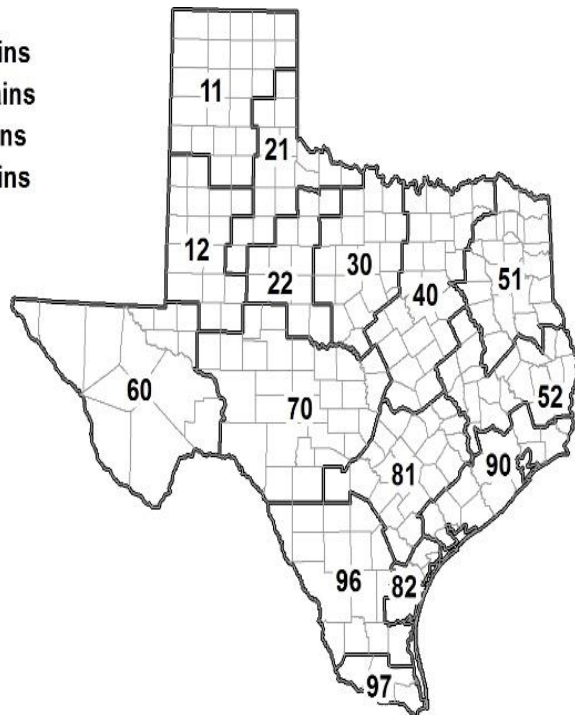
¹ The formula for the condition index is $I = (5V + 25P + 60F + 90G + 110E)/100$ where I = crop condition index and V, P, F, G, E = percentage of crop rated very poor, poor, fair, good, excellent.

Soil Moisture and Days Suitable by District

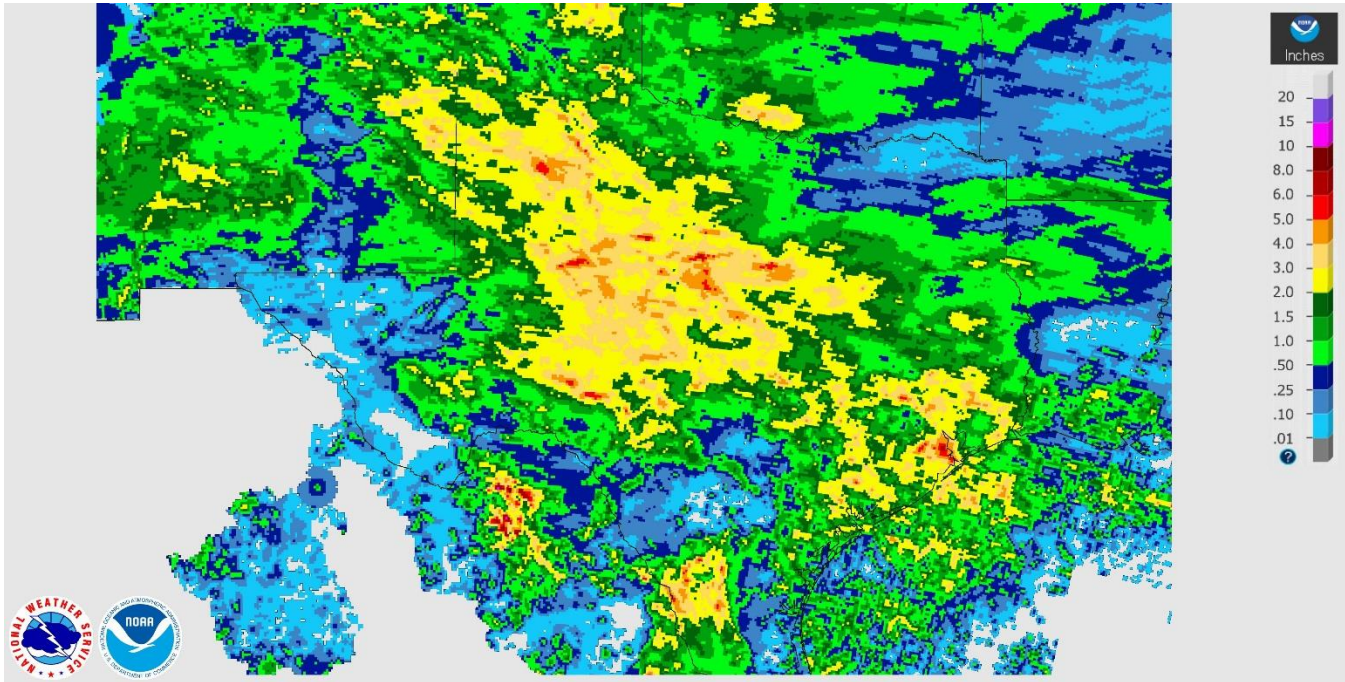
District	Subsoil Moisture Condition by District				Topsoil Moisture Condition by District				Days Suitable for Fieldwork
	Percentage of Acreage				Percentage of Acreage				
	Very Short	Short	Adequate	Surplus	Very Short	Short	Adequate	Surplus	
11	15	28	55	2	18	18	47	17	4.0
12	31	46	19	4	13	20	63	4	4.8
21	70	25	5	0	63	30	7	0	6.2
22	21	39	39	1	16	20	57	7	3.0
30	54	29	17	0	52	23	21	4	4.7
40	65	28	7	0	55	26	19	0	5.5
51	48	41	11	0	47	48	5	0	6.8
52	43	40	14	3	34	36	29	1	5.9
60	2	18	66	14	2	18	66	14	6.1
70	49	19	32	0	46	19	35	0	4.7
81	77	18	5	0	75	20	5	0	6.0
82	21	25	54	0	10	20	70	0	4.1
90	61	24	15	0	57	21	22	0	4.9
96	33	36	30	1	35	43	21	1	6.6
97	23	76	1	0	80	19	1	0	7.0
State	40	33	26	1	36	23	36	5	4.9

Texas Agricultural Districts

- 11 Northern High Plains
- 12 Southern High Plains
- 21 Northern Low Plains
- 22 Southern Low Plains
- 30 Cross Timbers
- 40 Blacklands
- 51 North East
- 52 South East
- 60 Trans-Pecos
- 70 Edwards Plateau
- 81 South Central
- 82 Coastal Bend
- 90 Upper Coast
- 96 South
- 97 Lower Valley

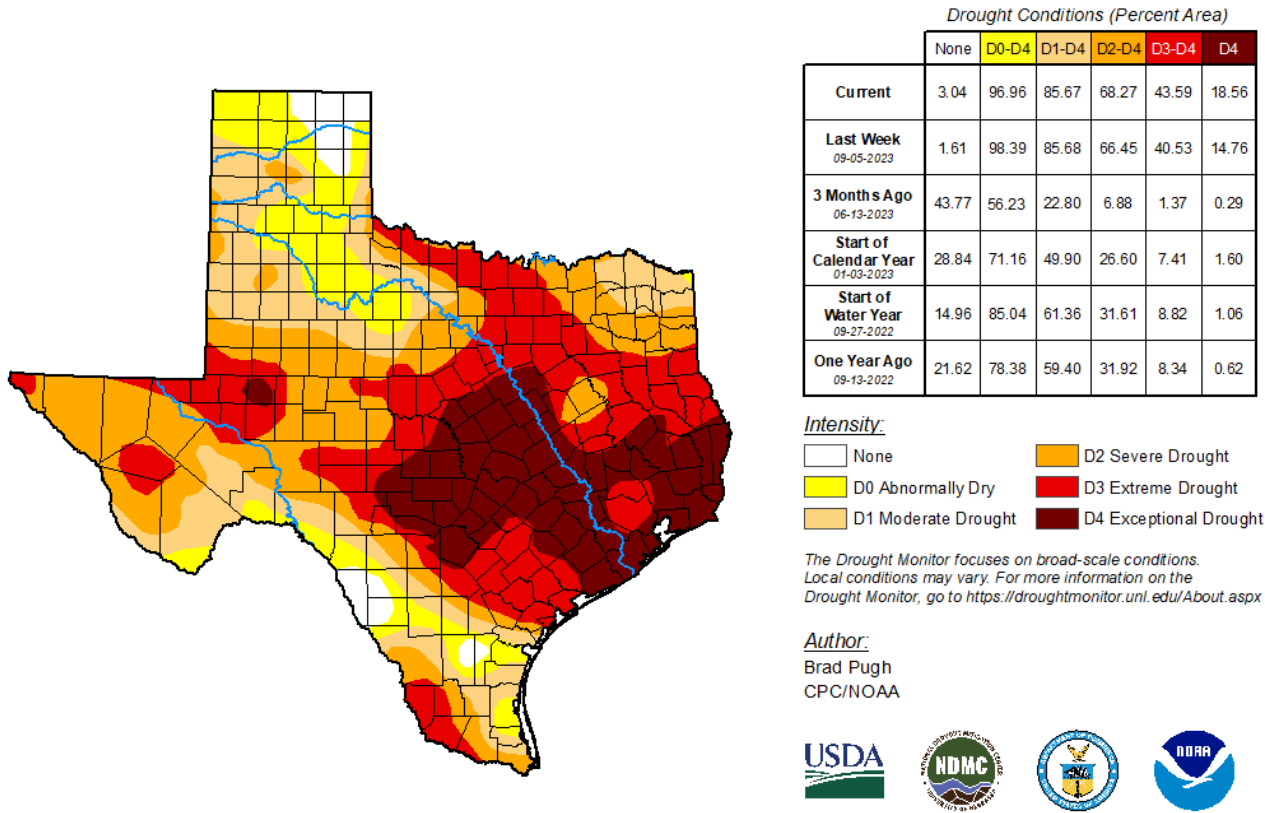


Seven Day Observed Regional Precipitation, September 17, 2023.



Source: National Weather Service, www.nws.noaa.gov

Drought Monitor, September 18, 2023.



droughtmonitor.unl.edu

Source: National Drought Mitigation Center, a partnership with USDA, U.S. Department of Commerce/NOAA, <http://droughtmonitor.unl.edu>